



Mid-City New Orleans Historic Gas Station

5022 Bienville Street
New Orleans, Louisiana 70119

REDEVELOPMENT
OPPORTUNITY





Offering Summary

5022 Bienville Street

New Orleans, Louisiana 70119

Presented is a unique redevelopment opportunity featuring a historic former gas station poised for transformation. The offering comprises a 1,108 square foot structure on a prime 5,438 square foot parcel. Positioned on the signalized corner of City Park Avenue and Bienville Street, the property commands exceptional visibility and accessibility. The site allows for a range of commercial concepts. Its strategic location, with immediate proximity to Interstate 10, City Park, and Delgado Community College, establishes it as a premier investment prospect in a dynamic neighborhood.

\$799,500

ASKING PRICE

1,108

BUILDING SQ. FT.

5,438

SITE SQ. FT.

Retail

PROPERTY TYPE

FOR MORE INFORMATION

Bobby Talbot

504-525-9763

btalbot@talbot-realty.com

License: 6978

02

INVESTMENT HIGHLIGHTS



Prime Redevelopment Opportunity

A rare 1,108 SF historic structure situated on a 5,438 SF lot. The site offers an exceptional canvas for a boutique commercial venue in a high-demand submarket.



High-Visibility Corner

Commanding the signalized intersection of City Park Avenue and Bienville Street, this asset guarantees maximum exposure to significant daily vehicular and pedestrian traffic.



Strategic Proximity

Located minutes from Interstate 10 and anchored by regional draws like City Park and Delgado Community College, ensuring consistent long-term demand drivers.



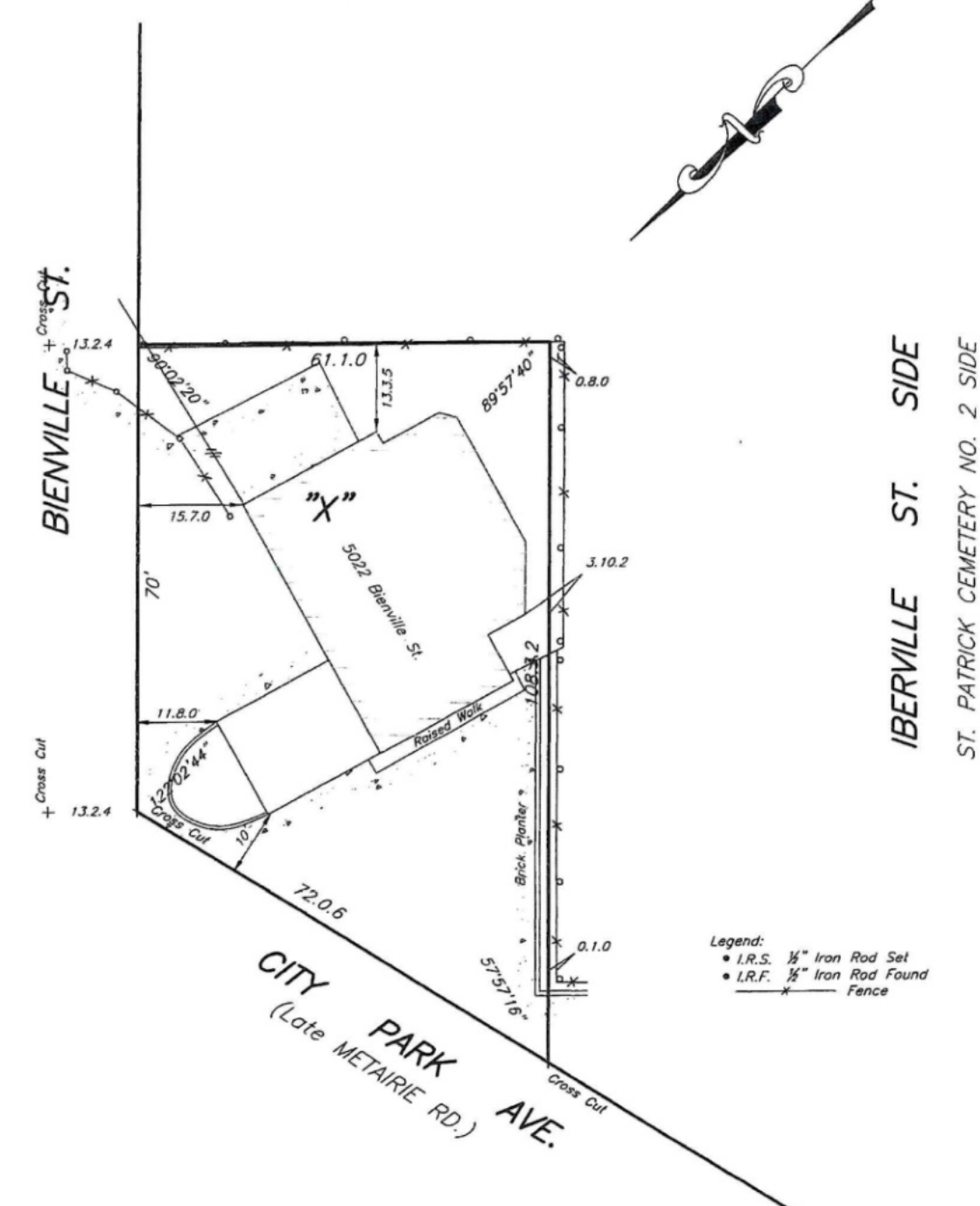
INTERIOR



SQ. NO. 630
SECOND DISTRICT
(Lot X)

ORLEANS PARISH
NEW ORLEANS, LA

HELENA ST. SIDE



THE SERVITUDES AND RESTRICTIONS SHOWN ON THIS SURVEY ARE LIMITED TO THOSE SET FORTH IN DESCRIPTION FURNISHED US AND THERE IS NO REPRESENTATION THAT ALL APPLICABLE SERVITUDES AND RESTRICTIONS ARE SHOWN HEREON. THE SURVEYOR HAS MADE NO TITLE SEARCH OR PUBLIC RECORD SEARCH IN COMPILING THE DATA FOR THIS SURVEY.

Date: November 9, 2023

This plat represents an actual ground survey made by me or under my direct supervision and control and meets the requirements for the Standards of Practice for Boundary Surveys as found in Louisiana Administrative Code TITLE 46:XXI, Chapter 29 for a Class "C" survey.

Made at the request of 5022 BIENVILLE GROUP LLC

Gilbert, Kelly & Couturie, Inc., Professional Land Surveying
2121 N. Causeway Blvd., Metairie LA 70001 (504) 836-2121

SURVEY DETAILS

SURVEYOR
Gilbert, Kelly & Couturie, Inc.
Professional Land Surveying

DATE
November 9, 2023

PREPARED FOR
5022 BIENVILLE GROUP LLC

LOT DIMENSIONS

72.0.6' City Park Ave

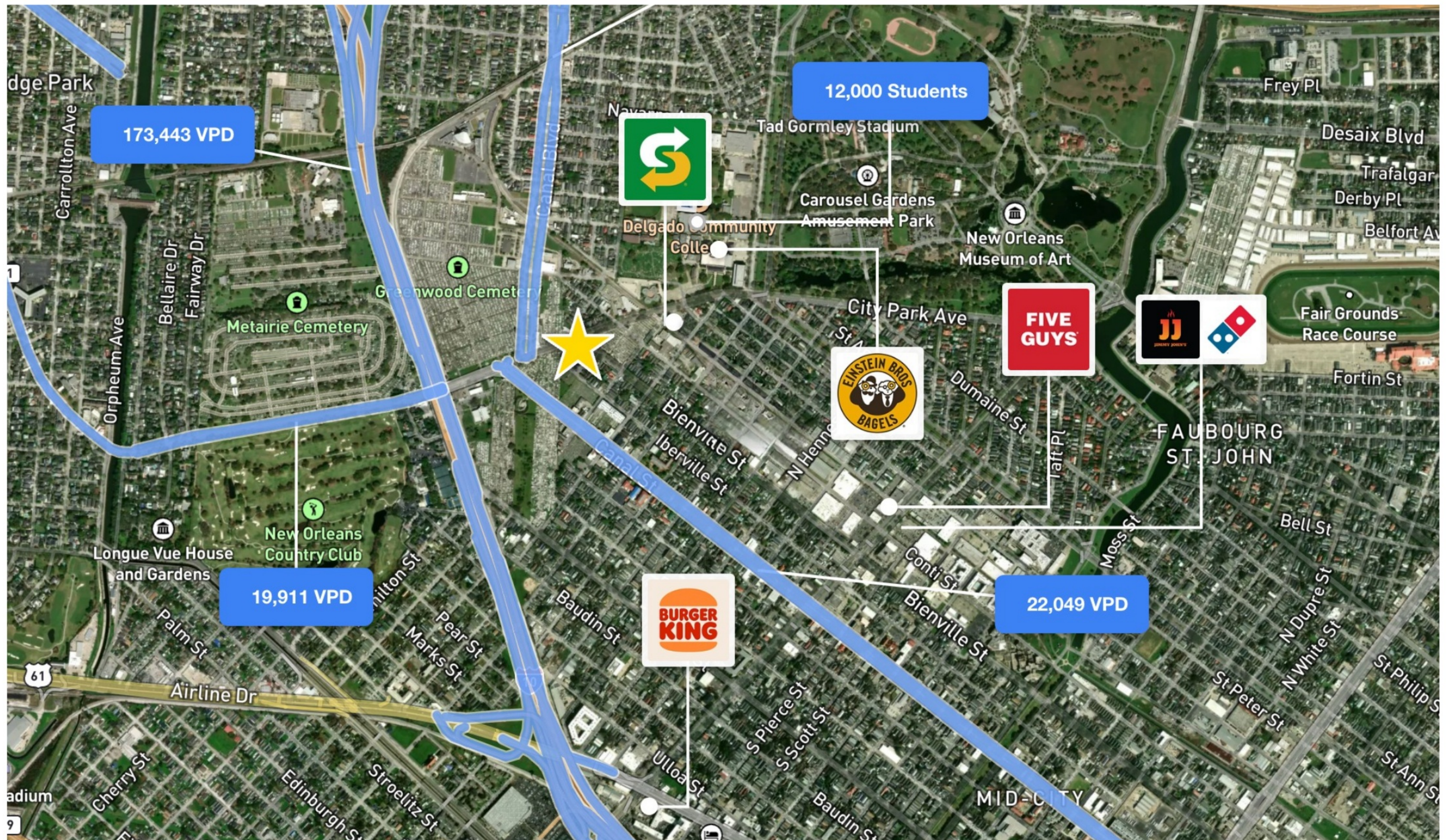
61.1.0' Bienville Street

SURVEY NOTES

This document represents a ground survey of the property located at 5022 Bienville St. in New Orleans, LA. The survey details specific lot dimensions and boundary lines along City Park Ave. and Bienville St.

Key site features indicated include the primary building structure, a covered canopy, raised walkways, and brick planters. The survey was conducted in accordance with Class 'C' standards of practice for Boundary Surveys in Louisiana.

Nearby Amenities

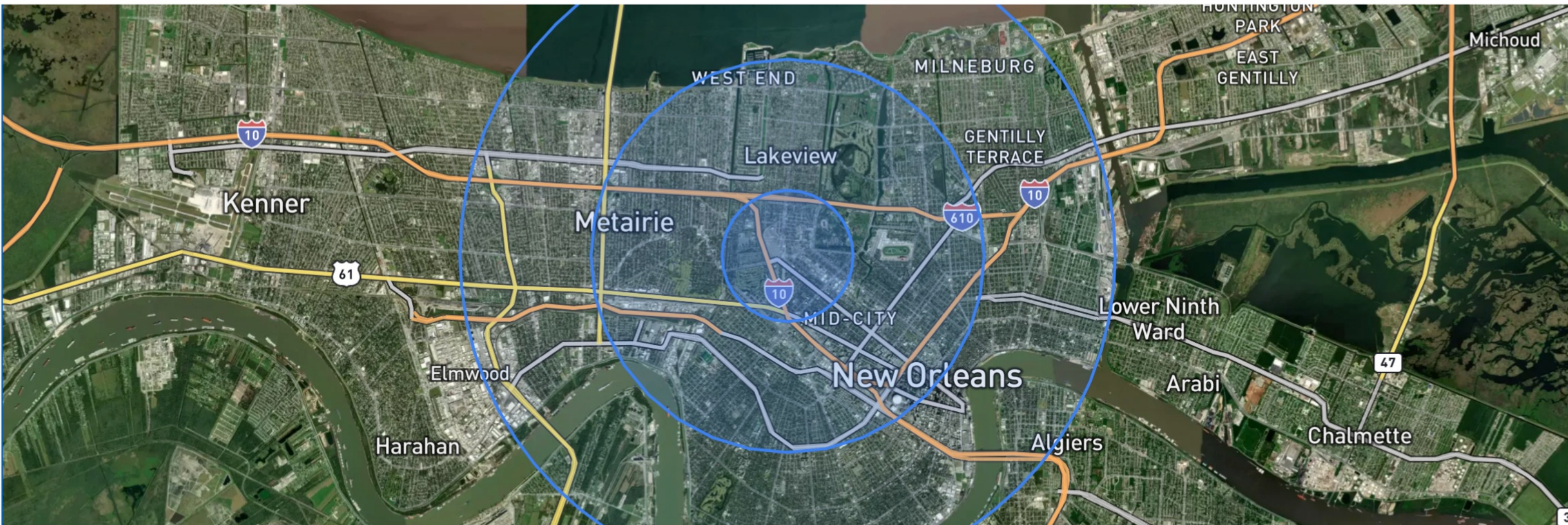


The property is strategically located with convenient access to major city landmarks and institutions. It is in close proximity to the expansive City Park, Delgado Community College, and offers swift access to Interstate 10, connecting it to the broader New Orleans metropolitan area.

5022 Bienville Street

MARKET DEMOGRAPHICS

Situated in the heart of Mid-City, 5022 Bienville Street benefits from a strategic location near City Park. The surrounding area demonstrates strong community connectivity and economic stability, with a significant residential population within walking distance.

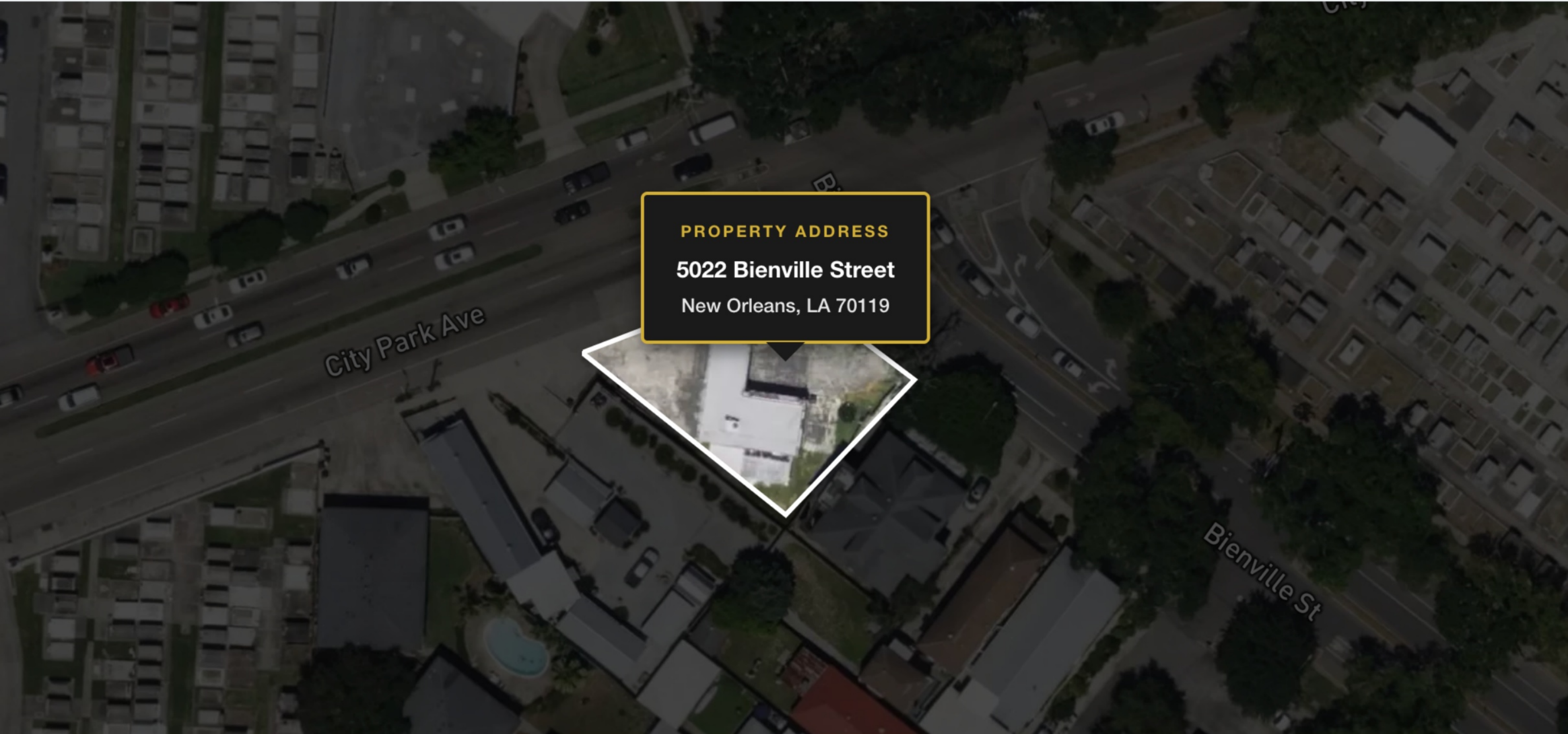


DEMOGRAPHIC METRICS

	1 MILE	3 MILES	5 MILES
Total Population	13,459	163,173	350,620
Median Household Income	\$58,518	\$51,842	\$55,385
Bachelor's Degree or Higher	49.6%	48.9%	46.7%

PARCEL MAP

— 5022 BIENVILLE STREET, NEW ORLEANS, LA



PROPERTY ADDRESS

5022 Bienville Street
New Orleans, LA 70119



LOT SIZE
5,438 SF



ZONING
**HU-MU Mixed
Use**



BUILDING SIZE
~1,108 SF



APN / PARCEL ID
2-06-2-110-03

EXCLUSIVELY LISTED BY

Bobby Talbot



PHONE

504-525-9763



EMAIL

btalbot@talbot-realty.com



LICENSE

6978

TALBOT REALTY GROUP

The information contained in the following Marketing Brochure is proprietary and strictly confidential. It is intended to be reviewed only by the party receiving it from Talbot Realty Group and should not be made available to any other person or entity without the written consent of Talbot Realty Group. This Marketing Brochure has been prepared to provide summary, unverified information to prospective purchasers, and to establish only a preliminary level of interest in the subject property. The information contained herein is not a substitute for a thorough due diligence investigation.

Talbot Realty Group has not made any investigation, and makes no warranty or representation, with respect to the income or expenses for the subject property, the future projected financial performance of the property, the size and square footage of the property and improvements, the presence or absence of contaminating substances, PCB's or asbestos, the compliance with State and Federal regulations, the physical condition of the improvements thereon, or the financial condition or business prospects of any tenant, or any tenant's plans or intentions to continue its occupancy of the subject property.

The information contained in this Marketing Brochure has been obtained from sources we believe to be reliable; however, Talbot Realty Group has not verified, and will not verify, any of the information contained herein, nor has Talbot Realty Group conducted any investigation regarding these matters and makes no warranty or representation whatsoever regarding the accuracy or completeness of the information provided. All potential buyers must take appropriate measures to verify all of the information set forth herein.