



CORPORATE REALTY

201 St. Charles Ave., Suite 4411, New Orleans, LA 70170
504.581.5005 | corp-realty.com

RETAIL OR OFFICE SPACE | FOR LEASE

Prime Corner in Central Business District

230 Carondelet Street
NEW ORLEANS, LA 70130

Richard Weber
rweber@corp-realty.com
504.581.5005

Jonathan Fawer
jfawer@corp-realty.com
504.581.5005

Hayden W. Wren III, SIOR, CCIM
hwren@corp-realty.com
504.581.5005



CORNER OF CARONDELET AND GRAVIER STREETS

230 Carondelet Street, New Orleans, LA 70130

PROPERTY DESCRIPTION

The former Jos. A Bank clothiers space is an 11,440 sf retail or office opportunity located in the center of New Orleans' Central Business District (CBD) at the intersection of Carondelet Street and Gravier Street. With signage and branding opportunity along both street-scapes, this prominent location provides great visibility and access in a dynamic market.

The two-story space features stairs and an elevator as well as fitting rooms and display windows. The first

floor has double glass doors that open onto Carondelet Street and expansive open space, while the second floor features storage rooms and office space.

This location is on the downtown St. Charles streetcar route with a stop just before the front door. It also has ample parking options with numerous garages and metered street spots nearby.

PROPERTY OVERVIEW

SIZE:

11,440 sf total
6,328 sf on the ground floor
5,112 sf on the second floor

LEASE RATE:

\$19.00/sf, NNN
Triple net amount TBD



CORPORATE REALTY

Richard Weber
rweber@corp-realty.com
504.581.5005

Jonathan Fawer
jfawer@corp-realty.com
504.581.5005

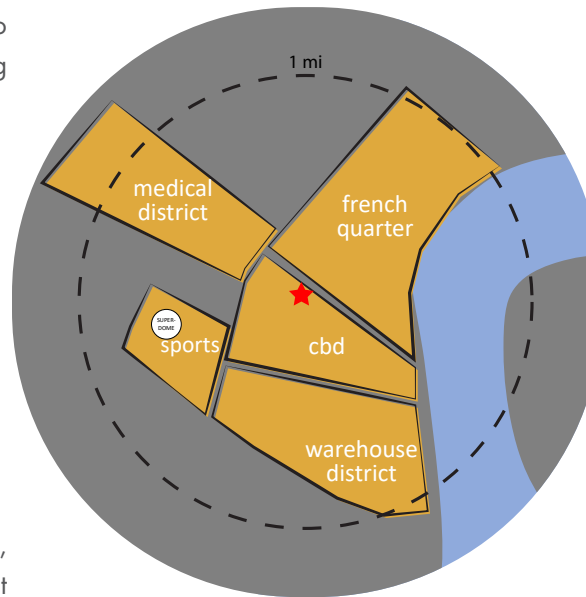
Hayden W. Wren III, SIOR, CCIM
hwren@corp-realty.com
504.581.5005

230 CARONDELET STREET

NEIGHBORHOOD

LOCATION

- This corner space is on the ground floor of the 210-room Hampton Inn & Suites New Orleans and adjacent to Place St. Charles, a 52-story, Class A office building with 1,004,484 sf.
- There are approximately 150,000 daily daytime workers, residents, and visitors in the vicinity. The space is close to office buildings, restaurants, theaters, high-end shopping, and more.
- It is in close proximity to the French Quarter, the Warehouse District, the Sports and Entertainment District and the Medical District.
- The space affords easy walkability to City Hall, major office buildings, South Market, The Shops at One Canal Place, The Outlet Collection at Riverwalk, and the new Four Seasons Hotel and Private Residences.



Heavy foot traffic: **11,000+ pedestrians** per day walk the Canal/Carondelet/Bourbon intersection*



Only steps to Bourbon St. and the French Quarter



Large daytime population and active nightlife



On streetcar lines



Walking distance to fine dining, event locations, shopping, and popular visitor destinations

*According to a 2013 study by the Downtown Development District



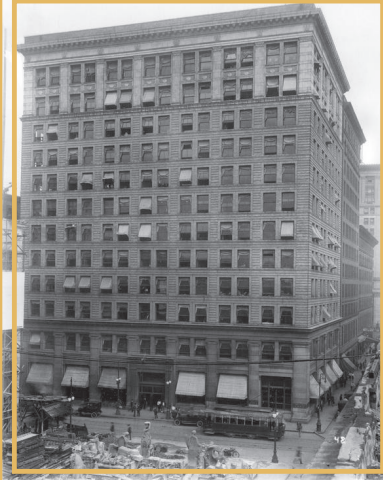
CORPORATE REALTY

Richard Weber
rweber@corp-realty.com
504.581.5005

Jonathan Fawer
jfawer@corp-realty.com
504.581.5005

Hayden W. Wren III, SIOR, CCIM
hwren@corp-realty.com
504.581.5005

230 CARONDELET STREET HISTORY



Charles L. Franck / Franck-Bertacci Photographers Collection,
The Historic New Orleans Collection, late 1910s



Charles L. Franck / Franck-Bertacci Photographers Collection,
The Historic New Orleans Collection, Dec. 23, 1950

- Designed by internationally-renowned architect **DANIEL H. BURNHAM** (1846-1912), who designed Union Station and Montauk Building in Chicago, Macy's (formerly Wanamaker's Department Store) in Philadelphia, the Flatiron Building in New York, and Selfridges department store in London
- Built in 1904 in the Neoclassical style
- Stood as the tallest building in New Orleans until 1921



CORPORATE REALTY

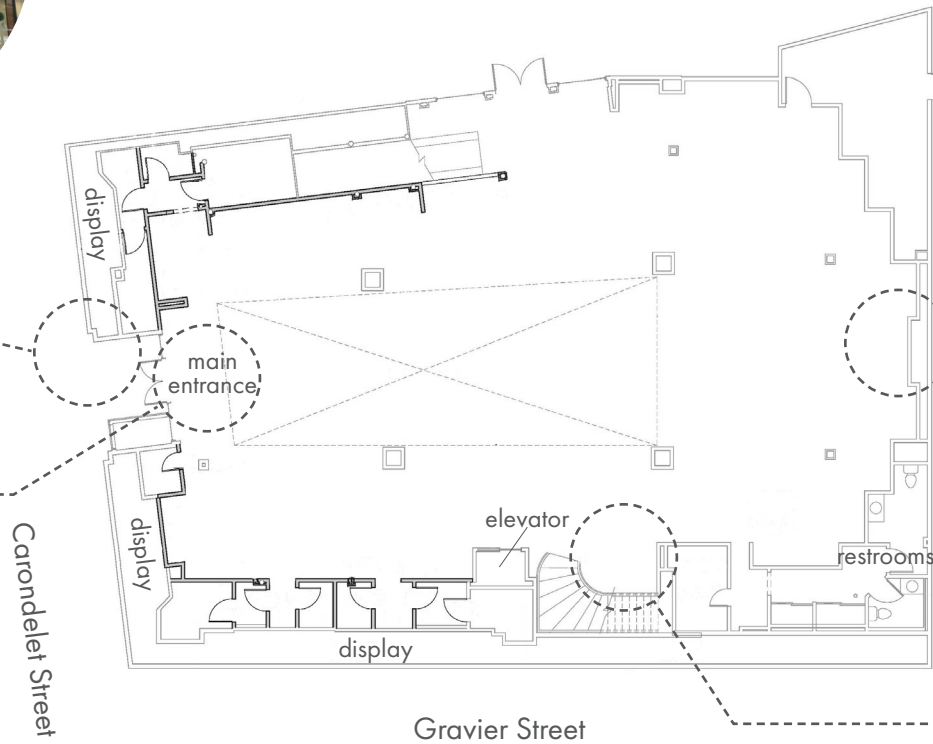
Richard Weber
rweber@corp-realty.com
504.581.5005

Jonathan Fawer
jfawer@corp-realty.com
504.581.5005

Hayden W. Wren III, SIOR, CCIM
hwren@corp-realty.com
504.581.5005

230 CARONDELET STREET

GROUND FLOOR PLAN



CORPORATE REALTY

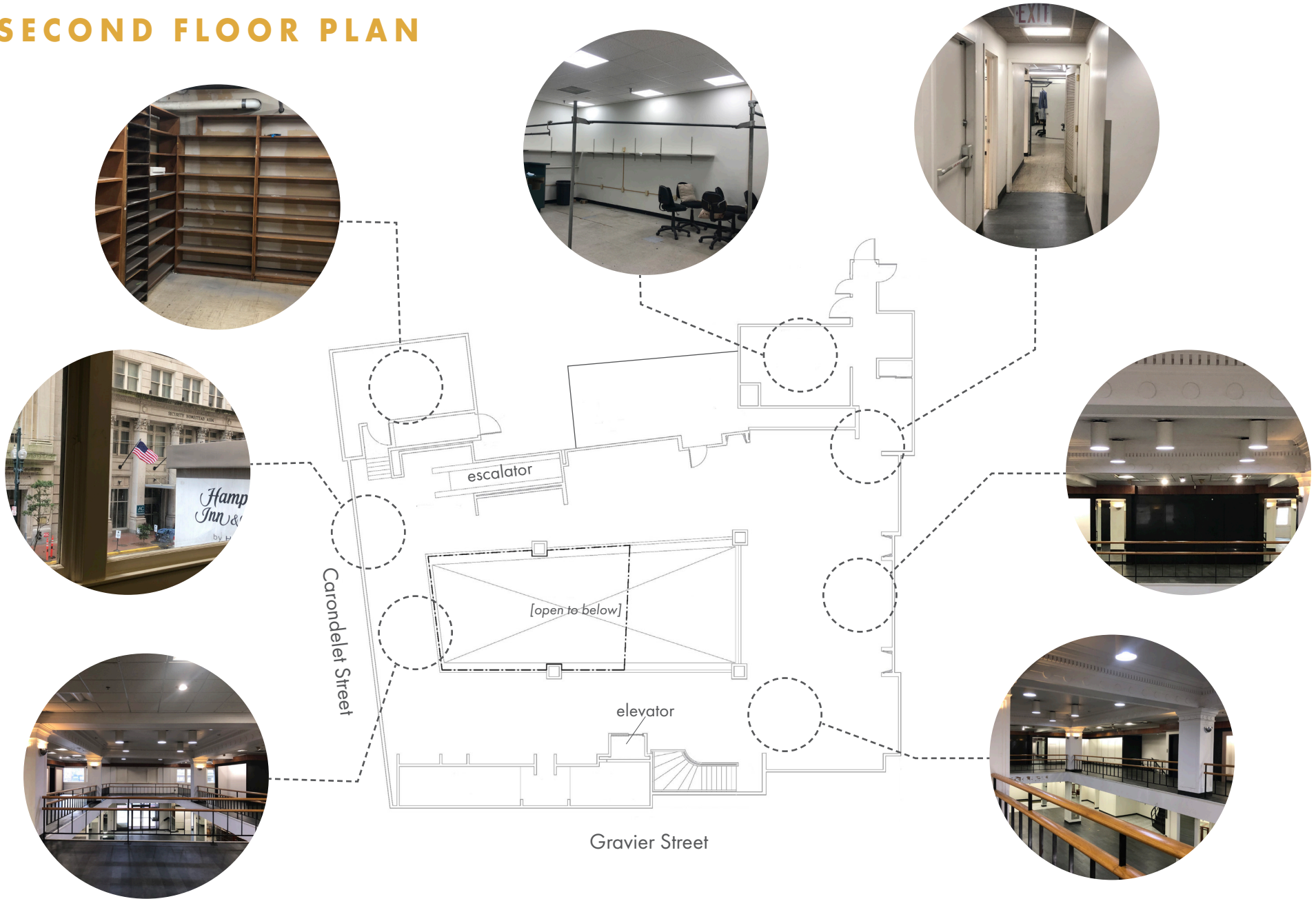
Richard Weber
rweber@corp-realty.com
504.581.5005

Jonathan Fawer
jfawer@corp-realty.com
504.581.5005

Hayden W. Wren III, SIOR, CCIM
hwren@corp-realty.com
504.581.5005

230 CARONDELET STREET

SECOND FLOOR PLAN

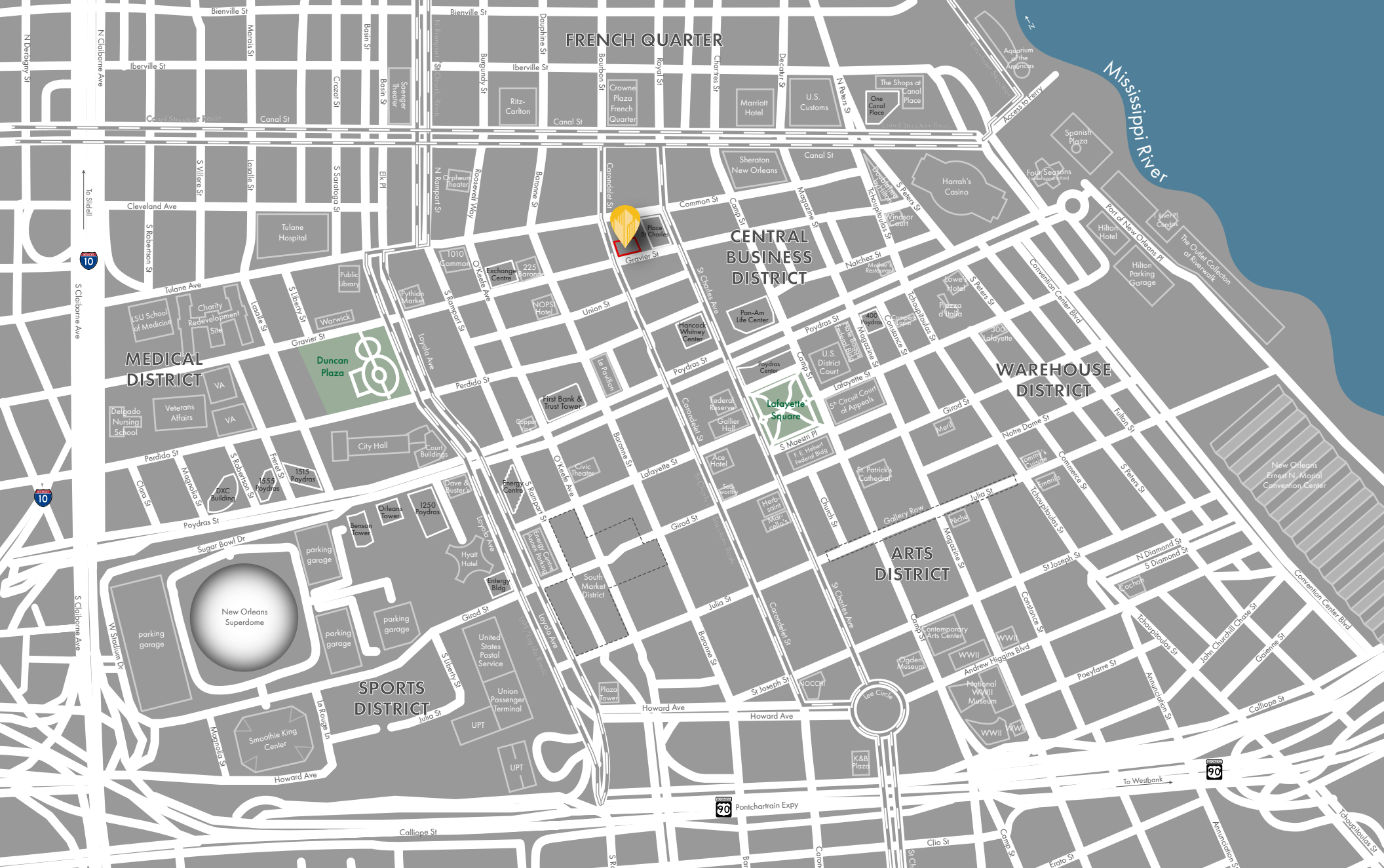


CORPORATE REALTY

Richard Weber
rweber@corp-realty.com
504.581.5005

Jonathan Fawer
jfawer@corp-realty.com
504.581.5005

Hayden W. Wren III, SIOR, CCIM
hwren@corp-realty.com
504.581.5005



230 CARONDELET STREET

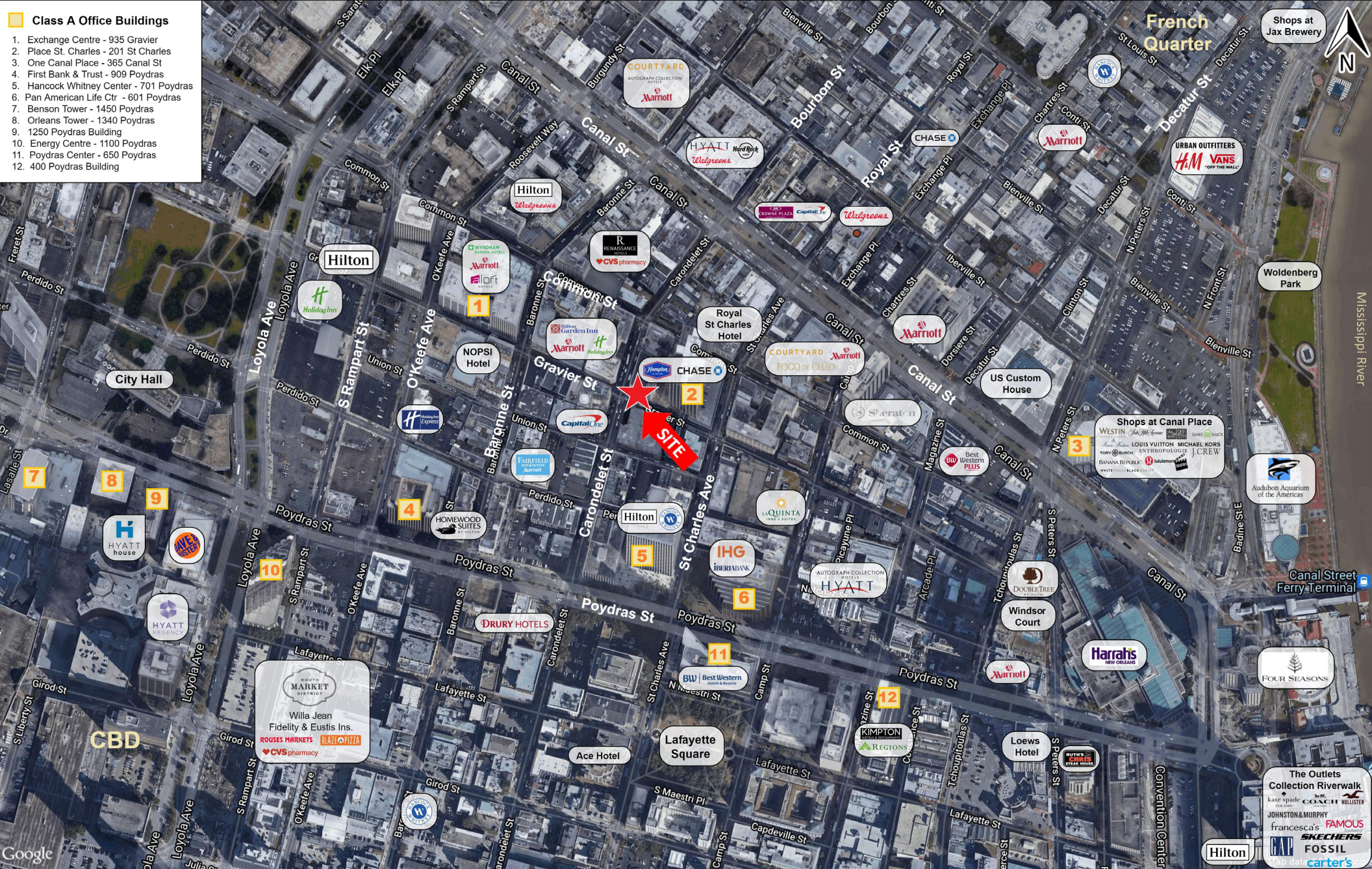


CORPORATE REALTY

Richard Weber
rweber@corp-realty.com
504.581.5005

Jonathan Fawer
jfawer@corp-realty.com
504.581.5005

Hayden W. Wren III, SIOR, CCIM
hwren@corp-realty.com
504.581.5005



230 CARONDELET STREET



CORPORATE REALTY

Richard Weber
 rweber@corp-realty.com
 504.581.5005

Jonathan Fawer
 jfawer@corp-realty.com
 504.581.5005

Hayden W. Wren III, SIOR, CCIM
 hwren@corp-realty.com
 504.581.5005

RETAIL OR COMMERCIAL | FOR LEASE

Prime Corner in Central Business District

230 Carondelet Street, New Orleans, LA 70130



Richard Weber
rweber@corp-realty.com
504.581.5005



Jonathan Fawer
jfawer@corp-realty.com
504.581.5005



Hayden W. Wren III, SIOR, CCIM
hwren@corp-realty.com
504.581.5005



CORPORATE REALTY

201 St. Charles Ave., Suite 4411, New Orleans, LA 70170
504.581.5005 | corp-realty.com

The information contained herein has been obtained from sources that we deem reliable. No representation or warranty is made as to the accuracy thereof, and it is submitted subject to errors, omissions, change of price, or other conditions, or withdrawal without notice. Licensed in Louisiana: 4/2022