

## SUMMARY

## SITE PLAN

## RETAIL MAP

## PROPERTY PHOTOS

## AVAILABLE SUITE PHOTOS

## DEMOGRAPHICS



## FOR LEASE

### PROPERTY DESCRIPTION

River Commons is located in the New Orleans suburb of Algiers at the intersection of Behrman Place and Behrman Highway. Anchored by a 200,000-square-foot Walmart Supercenter, the property is also home to many national and regional retailers, including Dollar Tree, and Cato to name a few.

### AVAILABLE

- Suite A 1,289 SF
- Suite D 1,493 SF
- Suite E 1,493 SF
- Suites D+ E = Up to 2,986 SF
- Suite H 1,910 SF
- Suite I-2 1,475 SF
- Suite I-3 1,476 SF
- Suite G 2,032 SF Available 12/1/25
- Suite B 1,480 SF Available 11/1/25

### TENANTS INCLUDE

- Walmart Supercenter
- Wendy's
- Raising Cane's
- Beauty Master Beauty Supply
- Dollar Tree
- Star Physical Therapy
- Cato
- Mystic Krewe of Femme Fatale
- Entergy Customer Care Center
- New Orleans Sewerage & Water Board Office
- GoAuto Insurance
- Cloud 9 Smoke Shop
- Behrman Cajun Seafood
- Kreative Hands



## SUMMARY

## SITE PLAN

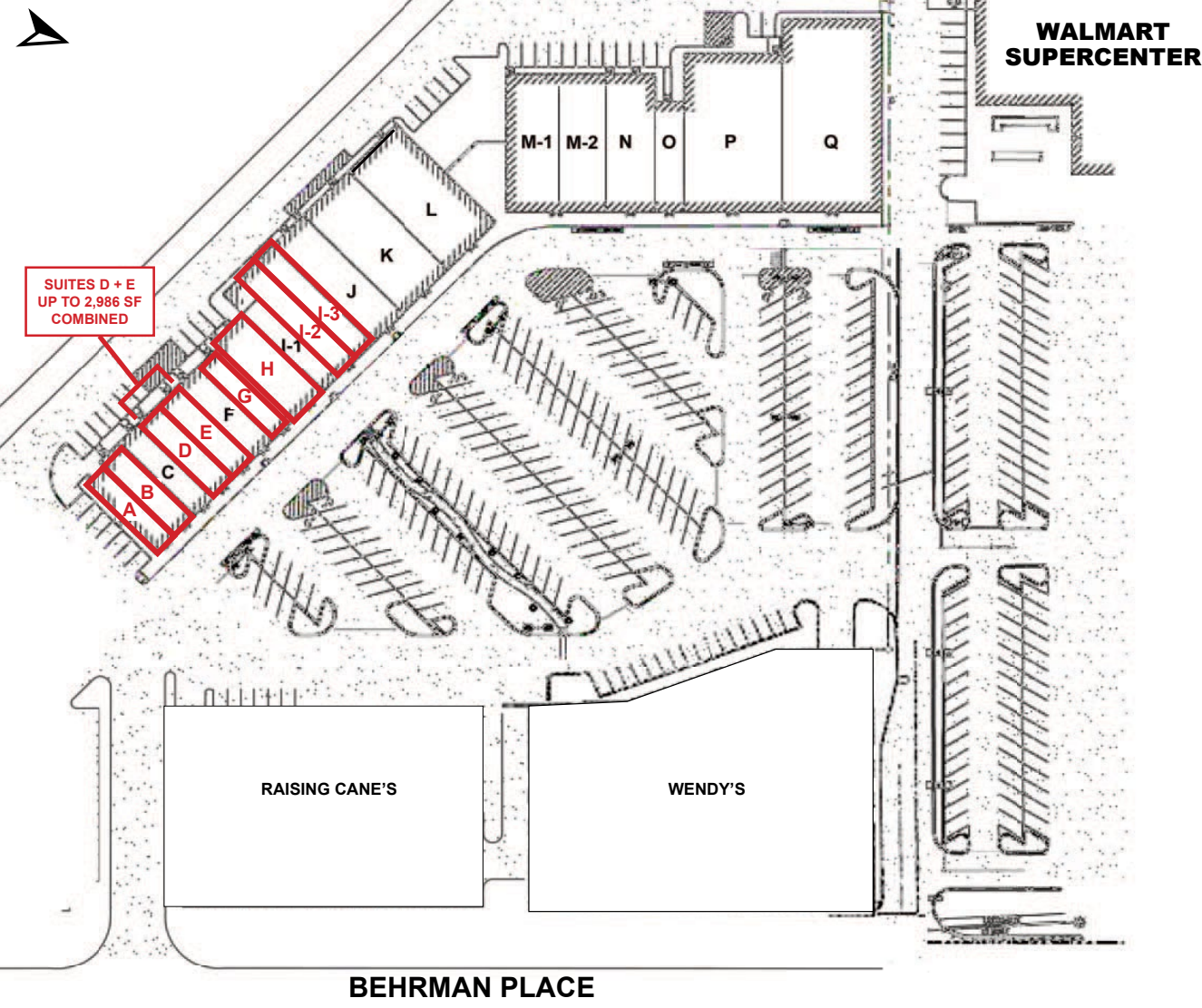
## RETAIL MAP

## PROPERTY PHOTOS

## AVAILABLE SUITE PHOTOS

## DEMOGRAPHICS

Click image for larger view



### TENANTS

A. AVAILABLE	1,289 SF
B. GameStop Available 12/1/25	1,480 SF
C. Behrman Cajun Seafood	1,352 SF
D. AVAILABLE	1,493 SF
E. AVAILABLE	1,493 SF
F. GoAuto Insurance	1,460 SF
G. La Bella Nails Spa Available 12/1/25	2,032 SF
H. AVAILABLE	1,910 SF
I-1. Cloud 9 Smoke Shop	2,011 SF
I-2. AVAILABLE	1,475 SF
I-3. AVAILABLE	1,476 SF
J. Entergy Customer Care Center	2,980 SF
K. Cato	4,537 SF
L. In Lease	4,824 SF
M-1. Star Physical Therapy	3,769 SF
M-2. New Orleans Sewerage & Water Board Office	3,230 SF
N. Mystic Krewe of Femme Fatale	3,518 SF
O. Kreative Hands	1,624 SF
P. Dollar Tree	8,873 SF
Q. Beauty Master Beauty Supply	9,023 SF



## SUMMARY

## SITE PLAN

## RETAIL MAP

## PROPERTY PHOTOS

## AVAILABLE SUITE PHOTOS

## DEMOGRAPHICS





## SUMMARY

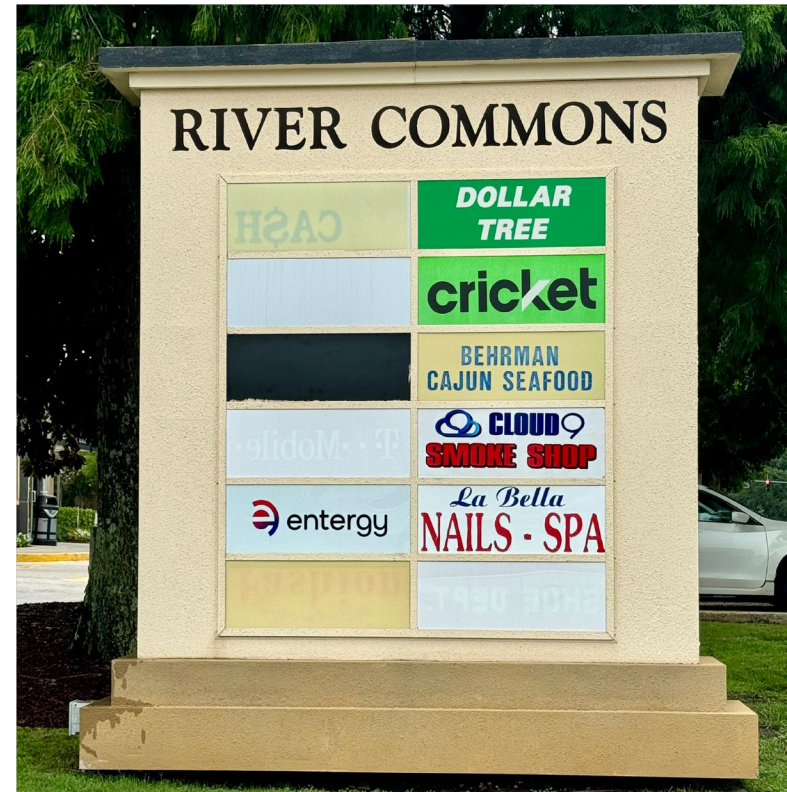
## SITE PLAN

## RETAIL MAP

## PROPERTY PHOTOS

## AVAILABLE SUITE PHOTOS

## DEMOGRAPHICS





## SUMMARY

## SITE PLAN

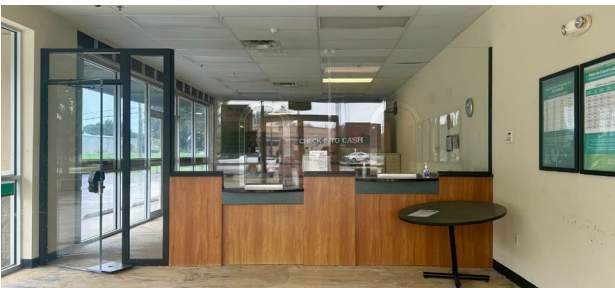
## RETAIL MAP

## PROPERTY PHOTOS

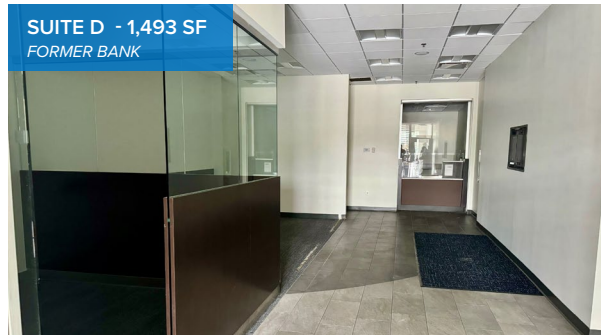
## AVAILABLE SUITE PHOTOS

## DEMOGRAPHICS

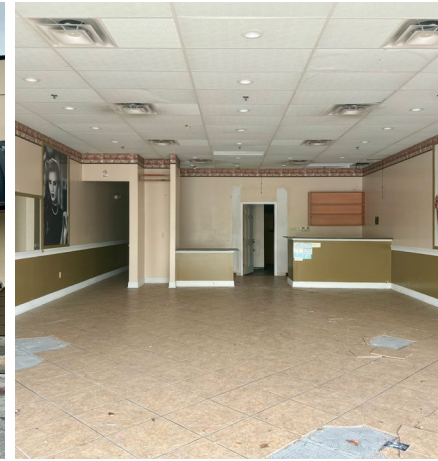
### SUITE A - 1,289 SF FORMER CHECK CASHING, END CAP



### SUITES D + E - UP TO 2,986 COMBINED FORMER BANK / FORMER BEAUTY STORE



### SUITES H - 1,910 SF FORMER SALON



### SUITE I-2 - 1,475 SF FORMER CELL SERVICE STORE

