

SUMMARY

SITE PLAN

RETAIL MAP

PROPERTY PHOTOS

AVAILABLE SUITE PHOTOS

DEMOGRAPHICS



FOR LEASE

PROPERTY DESCRIPTION

River Commons is located in the New Orleans suburb of Algiers at the intersection of Behrman Place and Behrman Highway. Anchored by a 200,000-square-foot Walmart Supercenter, the property is also home to many national and regional retailers, including Dollar Tree, and Cato to name a few.

AVAILABLE

- Suite A 1,289 SF
- Suite B 1,480 SF
- Suite D 1,493 SF
- Suite E 1,493 SF
- Suite G 2,032 SF
- Suite H 1,910 SF
- Suite I-2 1,475 SF
- Suite I-3 1,476 SF

TENANTS INCLUDE

- Walmart Supercenter
- Wendy's
- Raising Cane's
- Beauty Master Beauty Supply
- Dollar Tree
- Star Physical Therapy
- Palace Nails (Opening 2026)
- Cato
- Mystic Krewe of Femme Fatale
- Entergy Customer Care Center
- GoAuto Insurance
- New Orleans Sewerage & Water Board Office
- Cloud 9 Smoke Shop
- Behrman Cajun Seafood
- Kreative Hands

SUMMARY

SITE PLAN

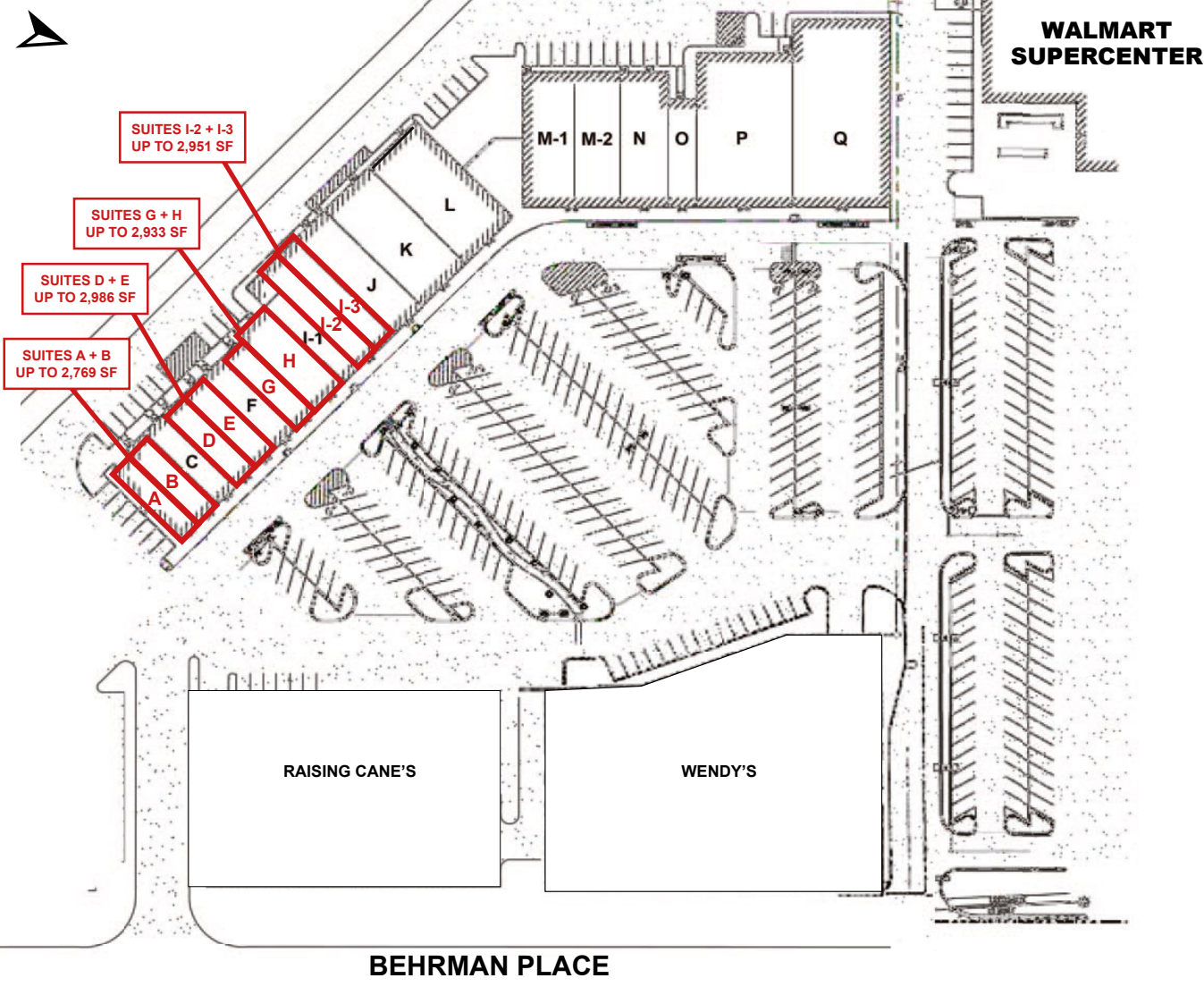
RETAIL MAP

PROPERTY
PHOTOS

AVAILABLE SUITE
PHOTOS

DEMOGRAPHICS

Click image for larger view



TENANTS

A. AVAILABLE	1,289 SF
B. AVAILABLE	1,480 SF
C. Behrman Cajun Seafood	1,352 SF
D. AVAILABLE	1,493 SF
E. AVAILABLE	1,493 SF
F. GoAuto Insurance	1,460 SF
G. AVAILABLE	2,032 SF
H. AVAILABLE	1,910 SF
I-1. Cloud 9 Smoke Shop	2,011 SF
I-2. AVAILABLE	1,475 SF
I-3. AVAILABLE	1,476 SF
J. Entergy Customer Care Center	2,980 SF
K. Cato	4,537 SF
L. Palace Nails Opening 2026	4,824 SF
M-1. Star Physical Therapy	3,769 SF
M-2. New Orleans Sewerage & Water Board Office	3,230 SF
N. Mystic Krewe of Femme Fatale	3,518 SF
O. Kreative Hands	1,624 SF
P. Dollar Tree	8,873 SF
Q. Beauty Master Beauty Supply	9,023 SF

SUMMARY

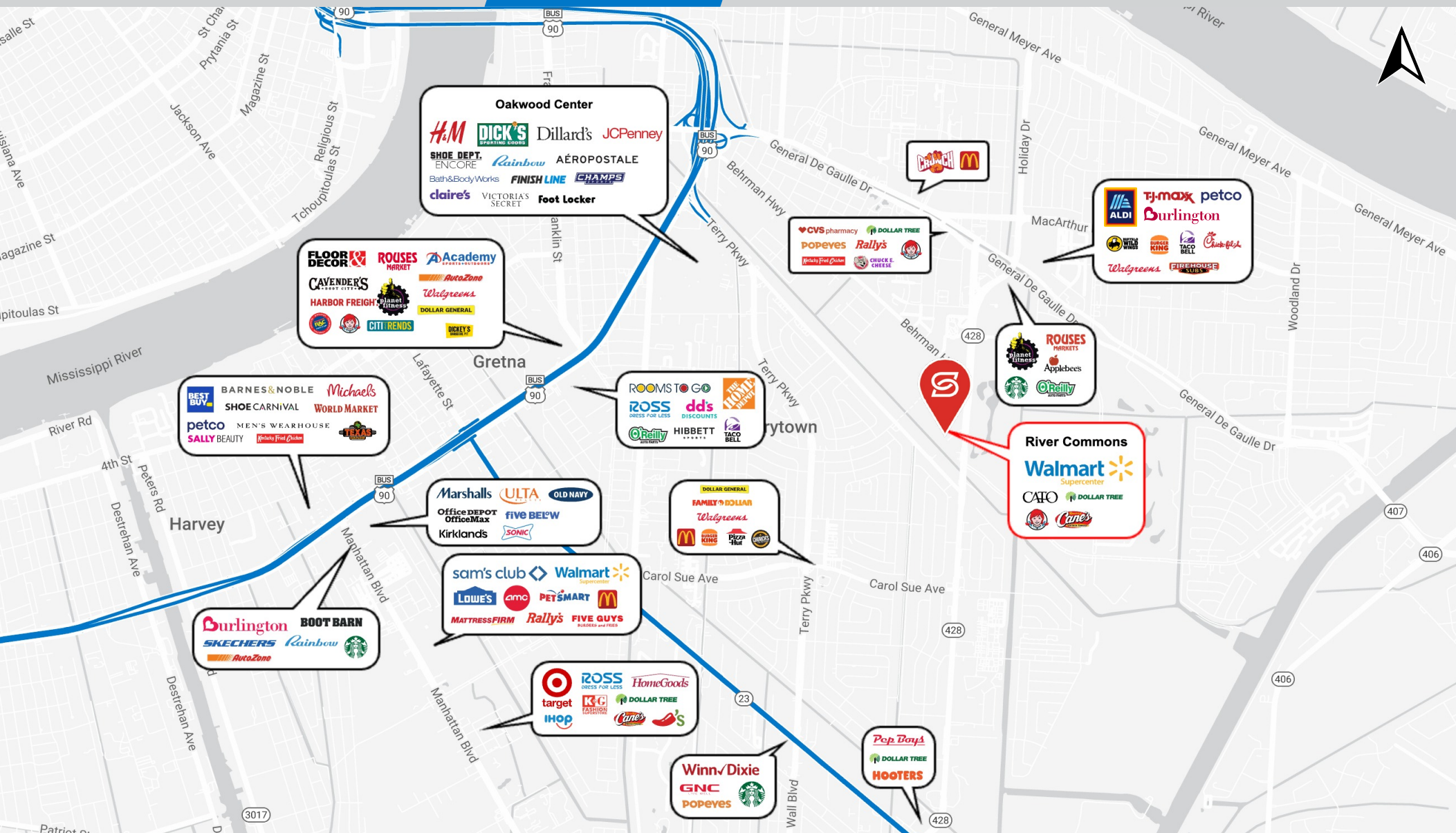
SITE PLAN

RETAIL MAP

PROPERTY PHOTOS

AVAILABLE SUITE PHOTOS

DEMOGRAPHICS



SUMMARY

SITE PLAN

RETAIL MAP

PROPERTY
PHOTOS

AVAILABLE SUITE
PHOTOS

DEMOGRAPHICS



SUMMARY

SITE PLAN

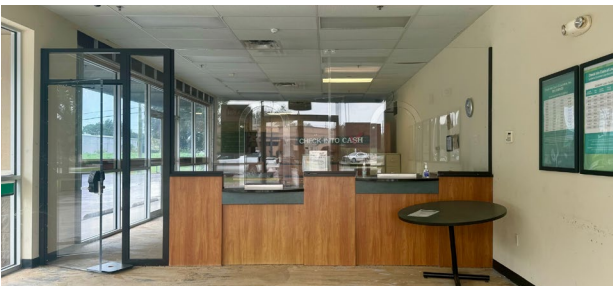
RETAIL MAP

PROPERTY PHOTOS

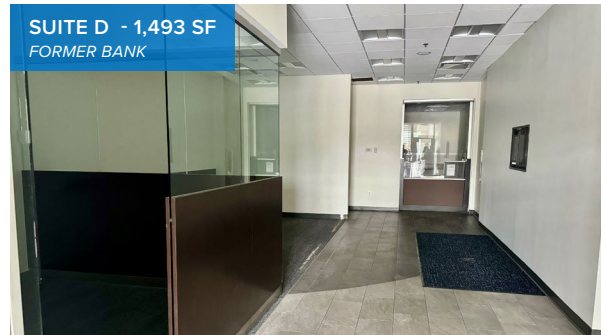
AVAILABLE SUITE PHOTOS

DEMOGRAPHICS

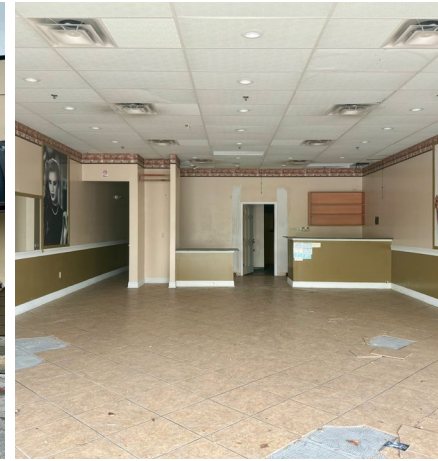
SUITE A - 1,289 SF FORMER CHECK CASHING, END CAP



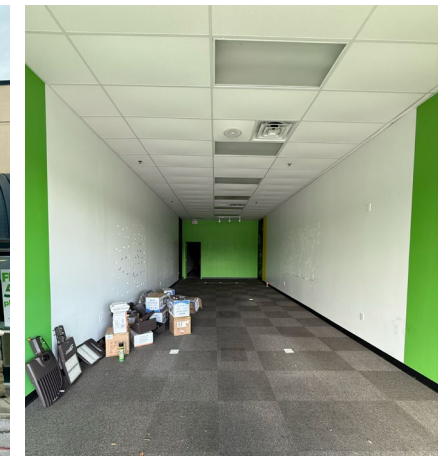
SUITES D + E - UP TO 2,986 COMBINED FORMER BANK / FORMER BEAUTY STORE



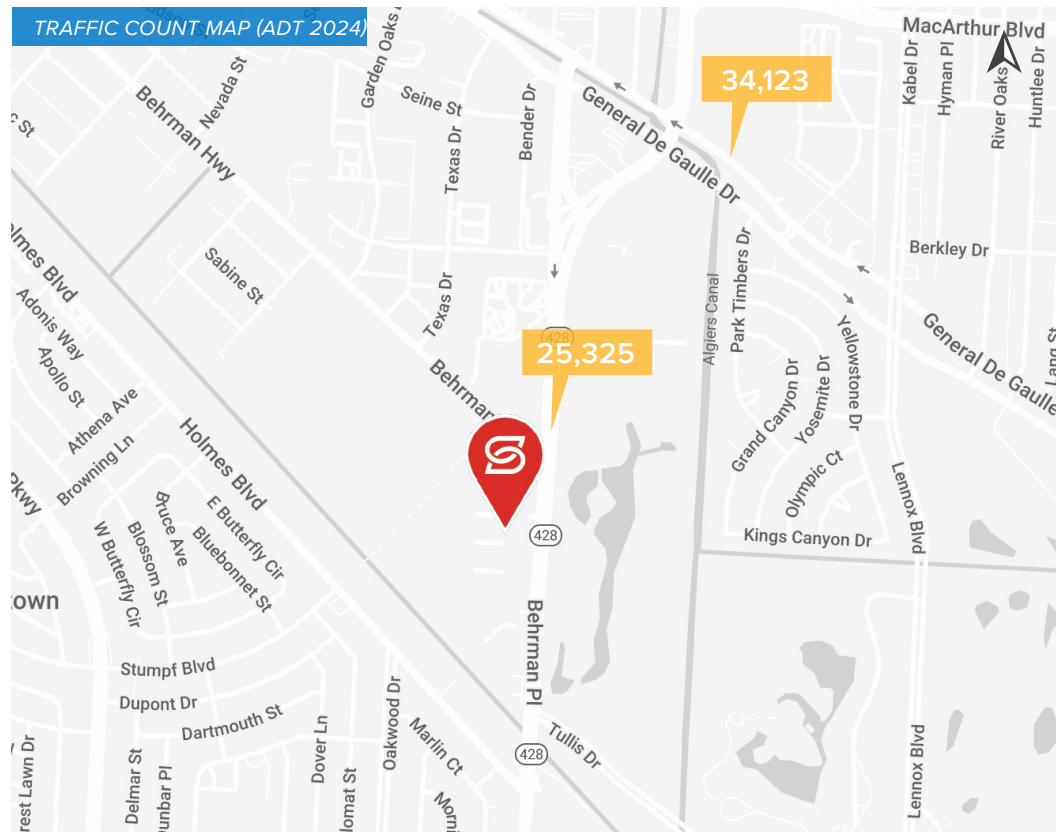
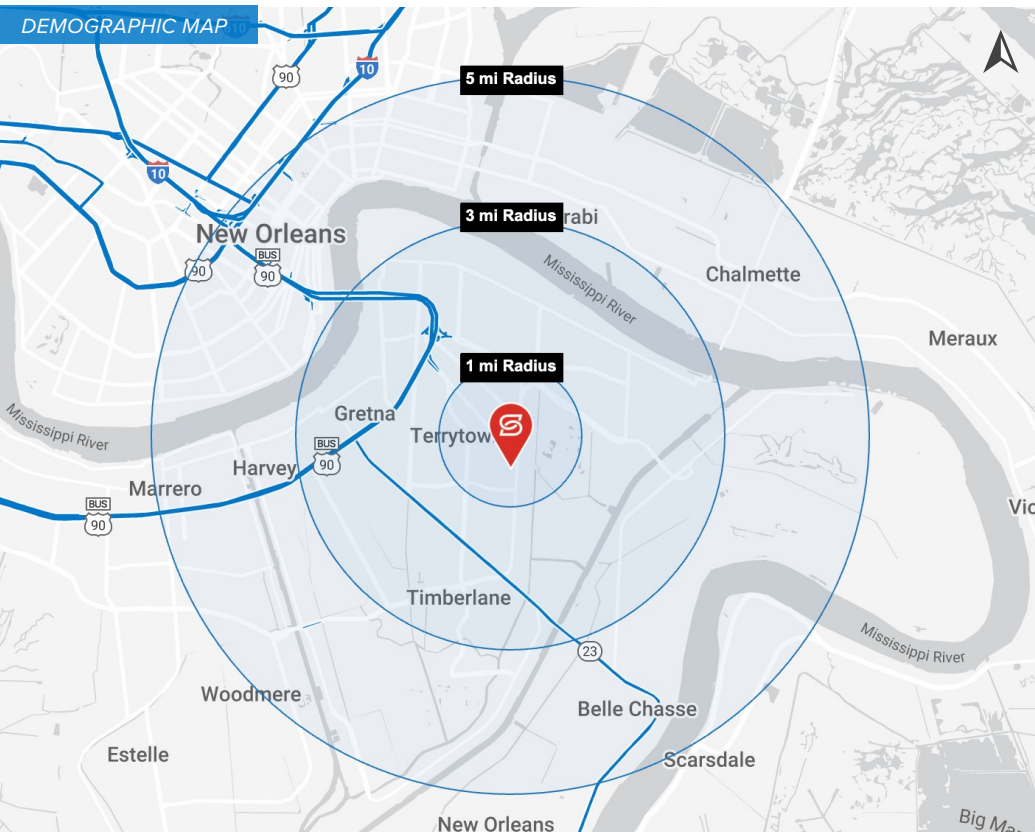
SUITES H - 1,910 SF FORMER SALON



SUITE I-2 - 1,475 SF FORMER CELL SERVICE STORE



DEMOGRAPHICS



2025 DEMOGRAPHICS



POPULATION

1 MI

16,103

3 MI

102,322

5 MI

248,081



AVG. HH INCOME

1 MI

\$70,910

3 MI

\$74,599

5 MI

\$91,067



HOUSEHOLDS

1 MI

6,304

3 MI

40,558

5 MI

109,165