



NORTHPORT BUSINESS CENTER

1520 North Hearne Avenue, Shreveport, LA 71107

- Spaces available for both Industrial/Warehouse and Office/Service/Distribution users
- Each suite has one overhead door
- Ceiling height for racking up to 18+ feet
- Two suites available from 2,795 to 3,621 sq.ft.
- Landlord can build out to meet tenant's requirements
- Location provides ease of access to the entire Shreveport-Bossier area and:
 - Via Hwy. 1, to North Shreveport/Blanchard
 - Via Inner Loop to Bossier and I-20 West to Bossier
 - Via Clyde Fant Parkway to both downtown areas, and South Shreveport/Bossier
 - 1.2 miles from new Amazon Robotics Facility
- Good tenant mix of professional, national and local tenants: Terracon Consultants, Carrier Corporation, Shreveport Metropolitan Ballet, Circa 36 Estates Sales, Dress for Success Shreveport-Bossier, Eastgate Chiropractic Clinic, Shreveport Symphony



To see a video of this property, visit these links:
<https://youtu.be/CKTfRW8XAO?si=P9n0c17G6P87IVJZ>
<https://youtu.be/oKpXDtzWAPM?si=5HNe6Mpb4I4x8NM3>

For more information, contact:

Michele Sauls, Associate Broker | 318.222.2244 | msauls@vintagerealty.com

ALL INFORMATION CONTAINED HEREIN IS BELIEVED TO BE ACCURATE, BUT IS NOT WARRANTED AND NO LIABILITY OF ERRORS OR OMISSIONS IS ASSURED BY EITHER THE PROPERTY OWNER OR VINTAGE REALTY COMPANY OR ITS AGENTS AND EMPLOYEES. PRICES AS STATED HEREIN AND PRODUCT AVAILABILITY IS SUBJECT TO CHANGE AND/OR SALE OR LEASE WITHOUT PRIOR NOTICE, AND ALL SIZES AND DIMENSIONS ARE SUBJECT TO CORRECTION. REV 2/2025



NORTHPORT BUSINESS CENTER

1520 NORTH HEARNE
SHREVEPORT, LA 71107

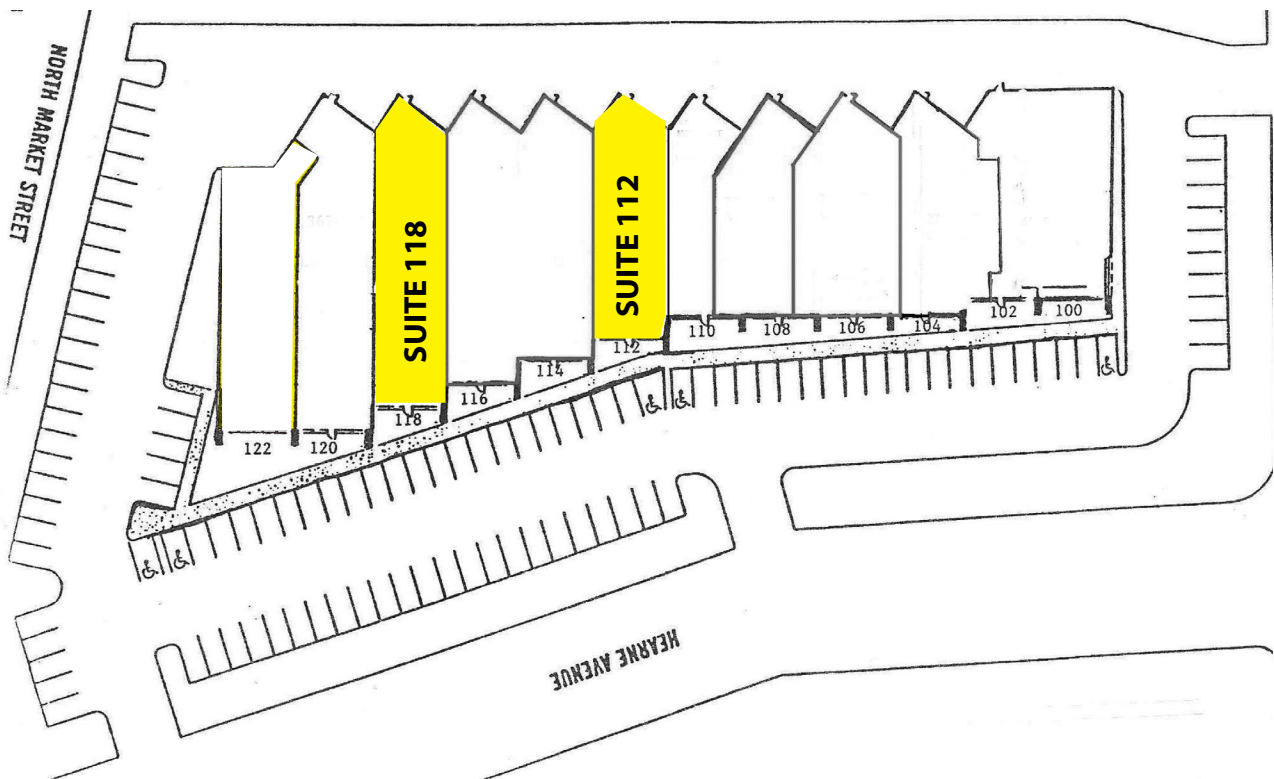
SITE PLAN



AVAILABLE SPACES

Suite 112: 2,795 SF

Suite 118: 3,621SF



For information, please contact:

Michele Sauls, Associate Broker | 318-222-2244

msauls@vintagerealty.com | vintagerealty.com

ALL INFORMATION CONTAINED HEREIN IS BELIEVED TO BE ACCURATE, BUT IS NOT WARRANTED AND NO LIABILITY OF ERRORS OR OMISSIONS IS ASSURED BY EITHER THE PROPERTY OWNER OR VINTAGE REALTY COMPANY OR ITS AGENTS AND EMPLOYEES. PRICES AS STATED HEREIN AND PRODUCT AVAILABILITY IS SUBJECT TO CHANGE AND/OR SALE OR LEASE WITHOUT PRIOR NOTICE, AND ALL SIZES AND DIMENSIONS ARE SUBJECT TO CORRECTION. 2/2025

NORTHPORT BUSINESS CENTER

1520 NORTH HEARNE
SHREVEPORT, LA 71107



For information, please contact:

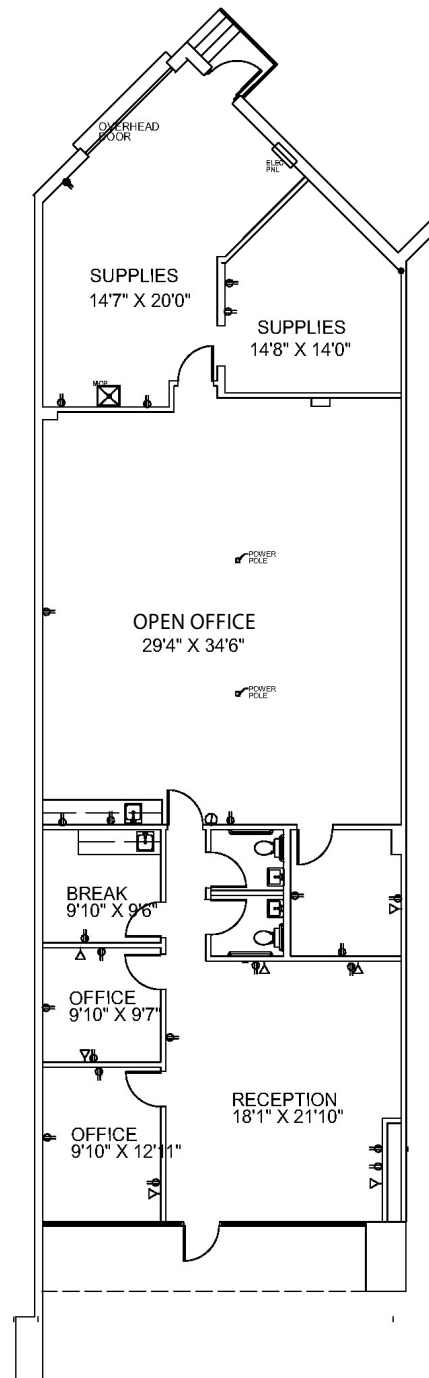
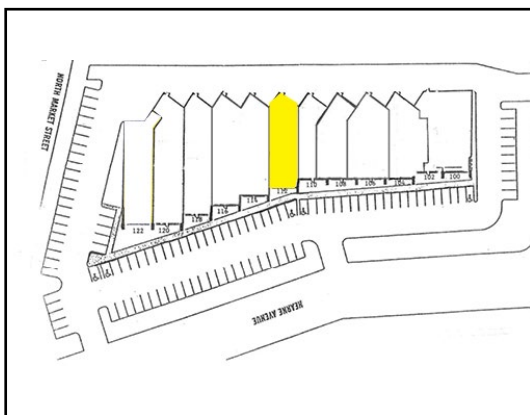
Michele Sauls, Associate Broker | 318-222-2244
msauls@vintagerealty.com | vintagerealty.com

ALL INFORMATION CONTAINED HEREIN IS BELIEVED TO BE ACCURATE, BUT IS NOT WARRANTED AND NO LIABILITY OF ERRORS OR OMISSIONS IS ASSURED BY EITHER THE PROPERTY OWNER OR VINTAGE REALTY COMPANY OR ITS AGENTS AND EMPLOYEES. PRICES AS STATED HEREIN AND PRODUCT AVAILABILITY IS SUBJECT TO CHANGE AND/OR SALE OR LEASE WITHOUT PRIOR NOTICE, AND ALL SIZES AND DIMENSIONS ARE SUBJECT TO CORRECTION. 2/2025

NORTHPORT BUSINESS CENTER

1520 NORTH HEARNE
SHREVEPORT, LA 71107

SUITE 112
2,795 SQUARE FEET



For information, please contact:

Michele Sauls, Associate Broker | 318-222-2244
msauls@vintagerealty.com | vintagerealty.com

ALL INFORMATION CONTAINED HEREIN IS BELIEVED TO BE ACCURATE, BUT IS NOT WARRANTED AND NO LIABILITY OF ERRORS OR OMISSIONS IS ASSURED BY EITHER THE PROPERTY OWNER OR VINTAGE REALTY COMPANY OR ITS AGENTS AND EMPLOYEES. PRICES AS STATED HEREIN AND PRODUCT AVAILABILITY IS SUBJECT TO CHANGE AND/OR SALE OR LEASE WITHOUT PRIOR NOTICE, AND ALL SIZES AND DIMENSIONS ARE SUBJECT TO CORRECTION. 2/2025

NORTHPORT BUSINESS CENTER

1520 NORTH HEARNE
SHREVEPORT, LA 71107

Suite 112



For information, please contact:

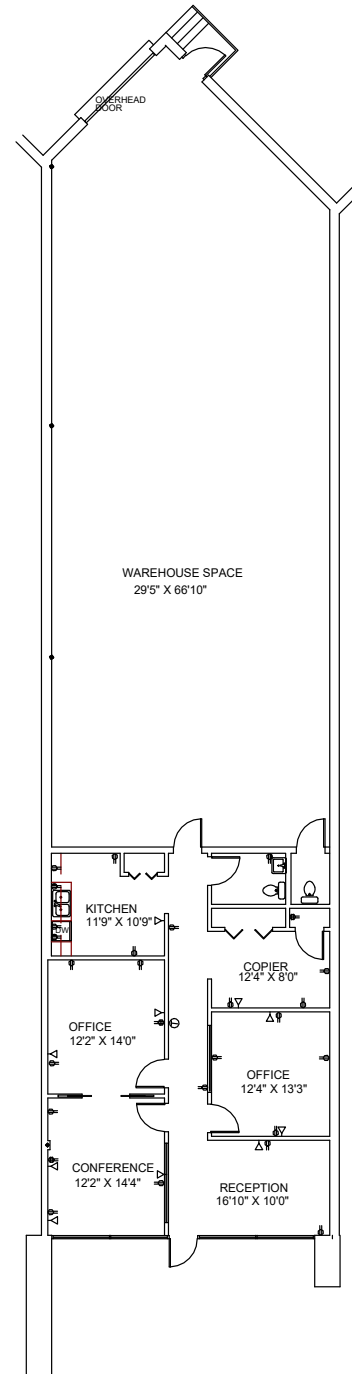
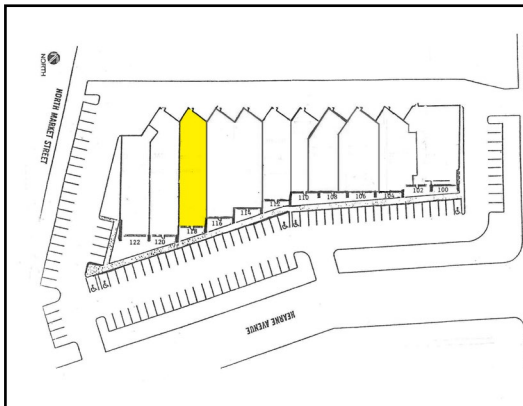
Michele Sauls, Associate Broker | 318-222-2244
msauls@vintagerealty.com | vintagerealty.com

ALL INFORMATION CONTAINED HEREIN IS BELIEVED TO BE ACCURATE, BUT IS NOT WARRANTED AND NO LIABILITY OF ERRORS OR OMISSIONS IS ASSURED BY EITHER THE PROPERTY OWNER OR VINTAGE REALTY COMPANY OR ITS AGENTS AND EMPLOYEES. PRICES AS STATED HEREIN AND PRODUCT AVAILABILITY IS SUBJECT TO CHANGE AND/OR SALE OR LEASE WITHOUT PRIOR NOTICE, AND ALL SIZES AND DIMENSIONS ARE SUBJECT TO CORRECTION. 2/2025

NORTHPORT BUSINESS CENTER

1520 NORTH HEARNE
SHREVEPORT, LA 71107

SUITE 118
3,621 SQUARE FEET



For information, please contact:

Michele Sauls, Associate Broker | 318-222-2244
msauls@vintagerealty.com | vintagerealty.com

ALL INFORMATION CONTAINED HEREIN IS BELIEVED TO BE ACCURATE, BUT IS NOT WARRANTED AND NO LIABILITY OF ERRORS OR OMISSIONS IS ASSURED BY EITHER THE PROPERTY OWNER OR VINTAGE REALTY COMPANY OR ITS AGENTS AND EMPLOYEES. PRICES AS STATED HEREIN AND PRODUCT AVAILABILITY IS SUBJECT TO CHANGE AND/OR SALE OR LEASE WITHOUT PRIOR NOTICE, AND ALL SIZES AND DIMENSIONS ARE SUBJECT TO CORRECTION. 2/2025

NORTHPORT BUSINESS CENTER

1520 NORTH HEARNE
SHREVEPORT, LA 71107

Suite 118



For information, please contact:

Michele Sauls, Associate Broker | 318-222-2244
msauls@vintagerealty.com | vintagerealty.com

ALL INFORMATION CONTAINED HEREIN IS BELIEVED TO BE ACCURATE, BUT IS NOT WARRANTED AND NO LIABILITY OF ERRORS OR OMISSIONS IS ASSURED BY EITHER THE PROPERTY OWNER OR VINTAGE REALTY COMPANY OR ITS AGENTS AND EMPLOYEES. PRICES AS STATED HEREIN AND PRODUCT AVAILABILITY IS SUBJECT TO CHANGE AND/OR SALE OR LEASE WITHOUT PRIOR NOTICE, AND ALL SIZES AND DIMENSIONS ARE SUBJECT TO CORRECTION. 2/2025