

stirling

FOR LEASE

# 2600 CITIPLACE DRIVE

CITIPLACE CENTRE I

BATON ROUGE, LOUISIANA



## CLASS A OFFICE BUILDING FOR LEASE

### BUILDING INFORMATION

- Five-story, Class A office building
- Located at 2600 Citiplace Drive, Baton Rouge, LA 70808
- Positioned in the Acadian/College corridor
- Constructed in 2001
- 82,023 SF of net rentable area
- Strong tenant mix with long-term federal and national tenants
- Excellent visibility from I-10
- Monument and façade signage available

### EXECUTIVE SUMMARY

CitiPlace Centre I is a five-story, Class A office property located at 2600 Citiplace Drive within Baton Rouge's sought-after Acadian/College corridor. Built in 2001, the building comprises 82,023 square feet of net rentable space and features a well-established tenant roster anchored by long-term federal and national occupants. The property benefits from outstanding exposure along I-10, with both monument and façade signage opportunities available.

### AVAILABLE SUITES

Suite 130 1,839 RSF

Suite 175 2,980 RSF

Suite 250 7,942 RSF





# stirling

SCOTT MACDONALD, SIOR

Office: 225-201-0142

Mobile: 408-838-5585

smacdonald@stirlingprop.com

## 2600 CITIPLACE DR.

CITIPLACE CENTRE I

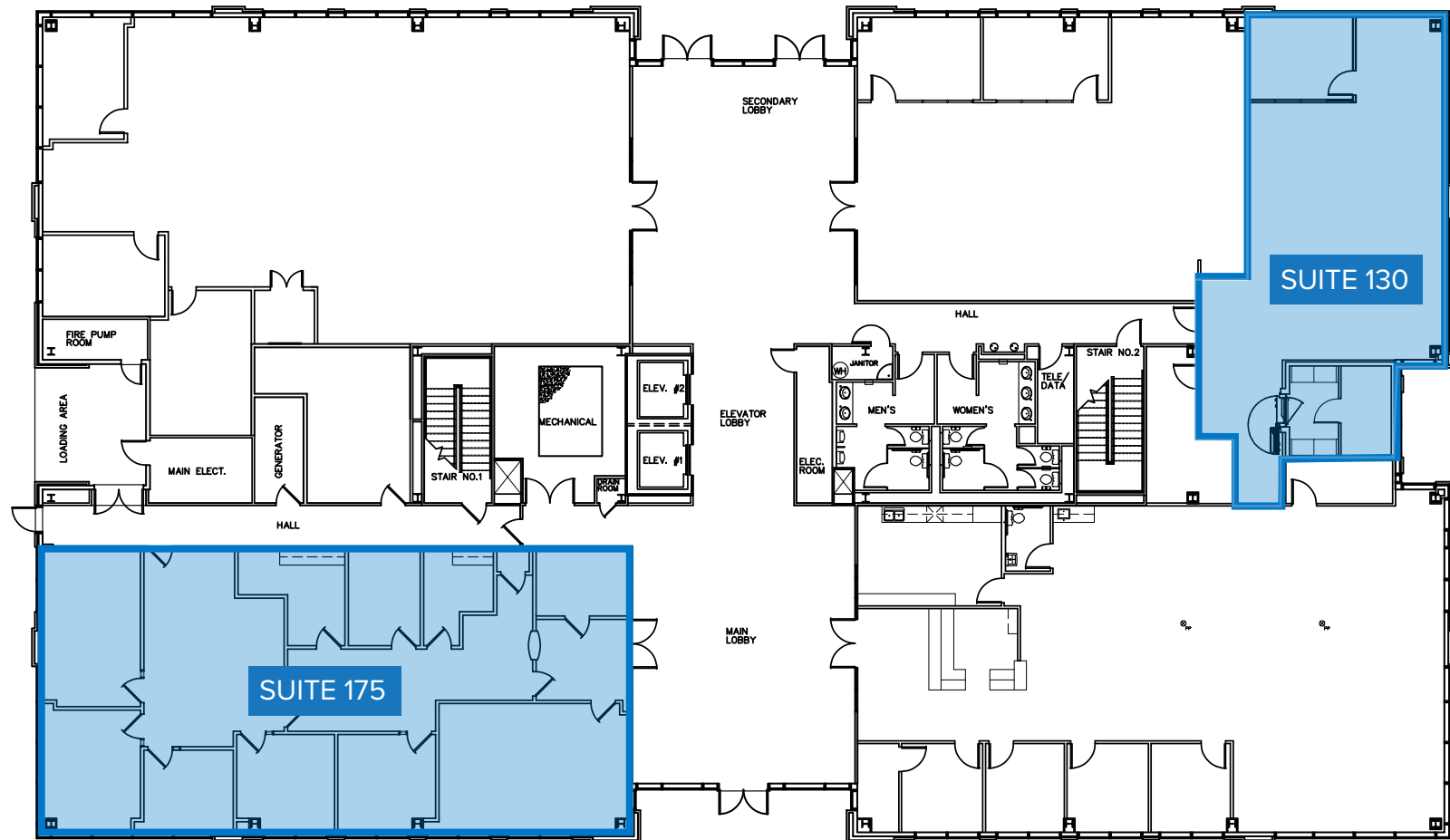
Baton Rouge, LA



## 1<sup>ST</sup> FLOOR AVAILABILITY

Suite 130 - 1,839 RSF

Suite 175 - 2,980 RSF



## 2<sup>ND</sup> FLOOR AVAILABILITY

Suite 250 - 7,845 RSF

