

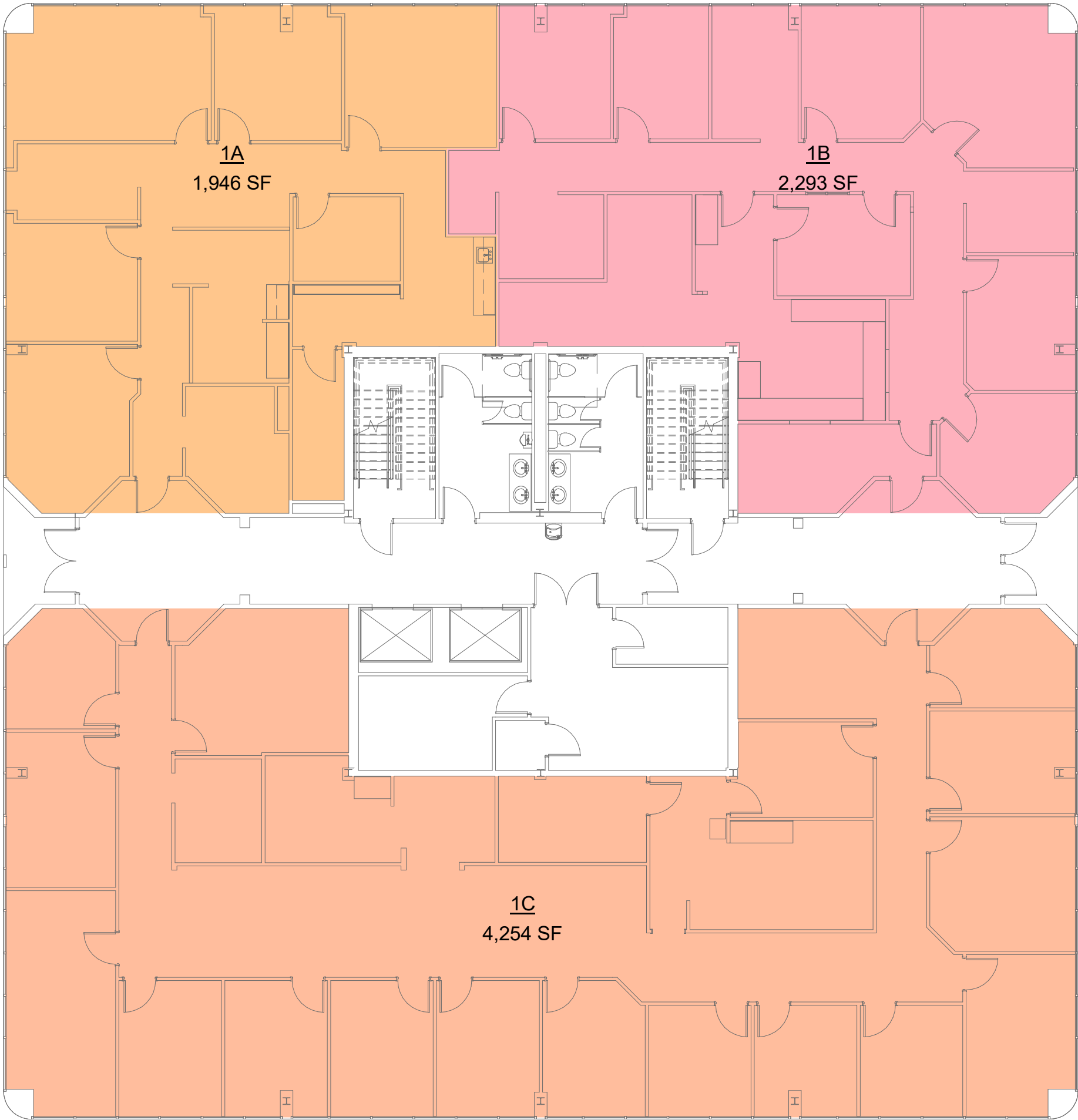
E:\2021\2021 TENANTS\2106 LAHAYE CENTER\0818\dwg\ARCH\LAHAYE CENTER (02).dwg

NAME	USABLE	COMMON (16%)	RENTABLE SF
1A	1,946 SF	311 SF	2,258 SF
1B	2,293 SF	367 SF	2,660 SF
1C	4,254 SF	681 SF	4,934 SF

1

FIRST FLOOR

SCALE: 3/32" = 1'-0"





**ZILER
ARCHITECTS**
A PROFESSIONAL ARCHITECTURAL CORPORATION
101 CALCO BLVD
LAFAYETTE, LOUISIANA 70503
337 269 6326 FAX 269 6380

DOCUMENTS PREPARED BY ZILER ARCHITECTS ARE INSTRUMENTS OF THE ARCHITECTS SERVICE FOR USE SOLELY WITH RESPECT TO THIS PROJECT. THE ARCHITECT SHALL RETAIN ALL COMMON LAW, STATUTORY AND OTHER RESERVED RIGHTS, INCLUDING THE COPYRIGHT. THEY ARE NOT TO BE USED BY THE CONTRACTOR OR ANY SUBCONTRACTOR, MATERIAL OR EQUIPMENT SUPPLIERS OR ANYONE FOR OTHER PROJECTS OR FOR ADDITIONS TO THIS PROJECT OUTSIDE THE SCOPE OF THE WORK WITHOUT THE SPECIFIC WRITTEN CONSENT OF ZILER ARCHITECTS.

RECORD DRAWINGS FOR:

LAHAYE CENTER

201 RUE IBERVILLE
LAFAYETTE, LOUISIANA 70508

NOT FOR CONSTRUCTION

DATE ISSUED
08/16/21
REVISED
-

PLOT DATE
08/18/21 4:13:33 PM
DRAWN BY
KEM
CHECKED BY
SRP
PROJECT NO.

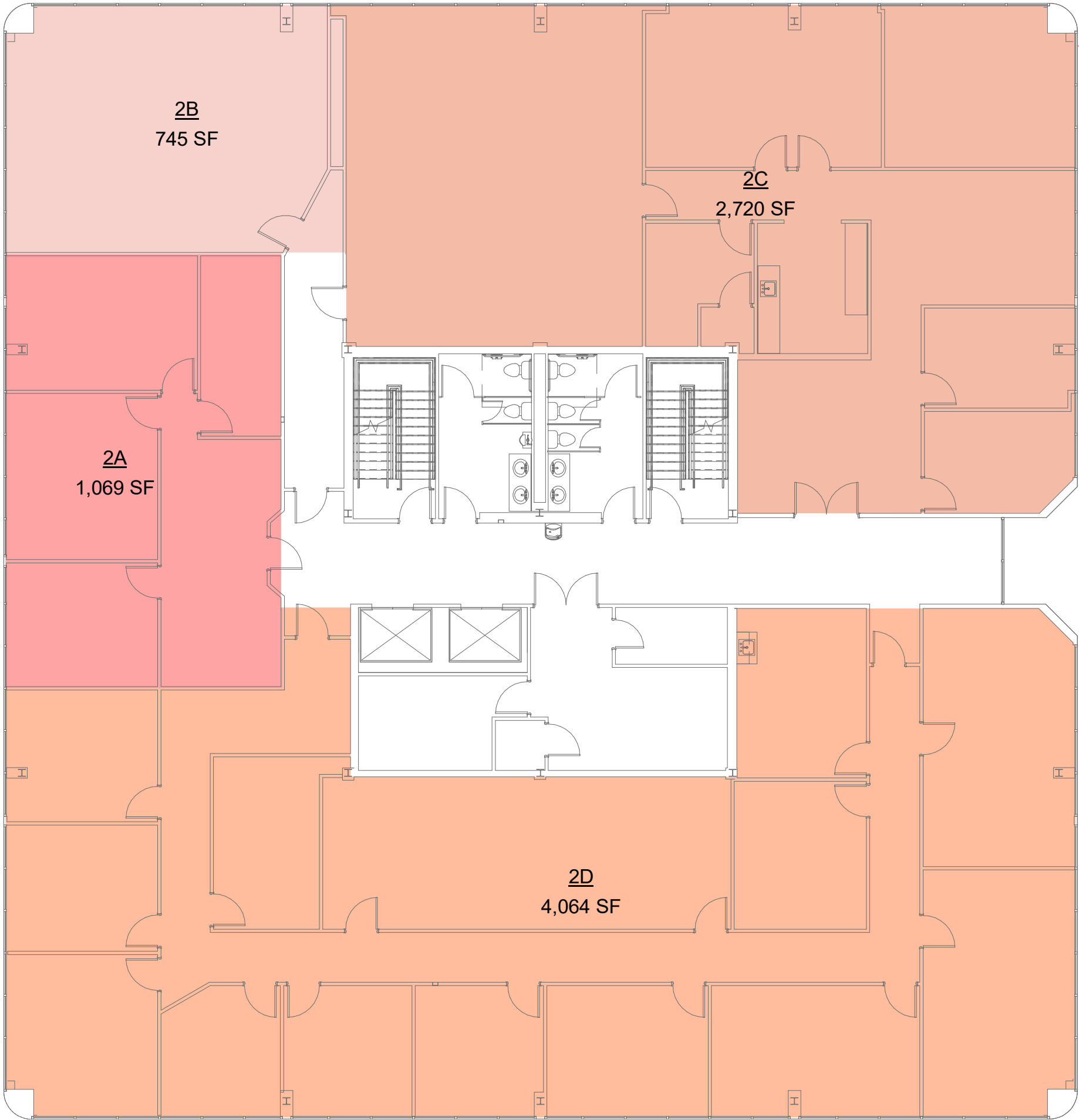
2106
SHEET NO.
AC0.1
OF

E:\2021\2021 TENANTS\2106 LAHAYE CENTER\0818\DWG\ARCH\LAHAYE CENTER (02).DWG

NAME	USABLE	COMMON (16%)	RENTABLE SF
2A	1,069 SF	171 SF	1,240 SF
2B	745 SF	119 SF	865 SF
2C	2,720 SF	435 SF	3,155 SF
2D	4,064 SF	650 SF	4,715 SF

1 SECOND FLOOR

SCALE: 3/32" = 1'-0"



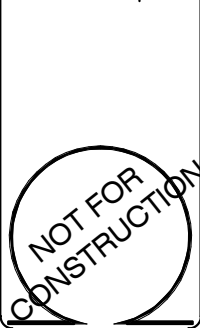
**ZILER
ARCHITECTS**
A PROFESSIONAL ARCHITECTURAL CORPORATION
101 CALCO BLVD
LAFAYETTE, LOUISIANA 70503
337 269 6326 FAX 269 6380

DOCUMENTS PREPARED BY ZILER ARCHITECTS ARE INSTRUMENTS OF THE ARCHITECTS SERVICE FOR USE SOLELY WITH RESPECT TO THIS PROJECT. THE ARCHITECT SHALL RETAIN ALL COMMON LAW, STATUTORY AND OTHER RESERVED RIGHTS, INCLUDING THE COPYRIGHT. THEY ARE NOT TO BE USED BY THE CONTRACTOR OR ANY SUBCONTRACTOR MATERIAL OR EQUIPMENT SUPPLIERS OR ANYONE FOR OTHER PROJECTS OR FOR ADDITIONS TO THIS PROJECT OUTSIDE THE SCOPE OF THE WORK WITHOUT THE SPECIFIC WRITTEN CONSENT OF ZILER ARCHITECTS.

RECORD DRAWINGS FOR:

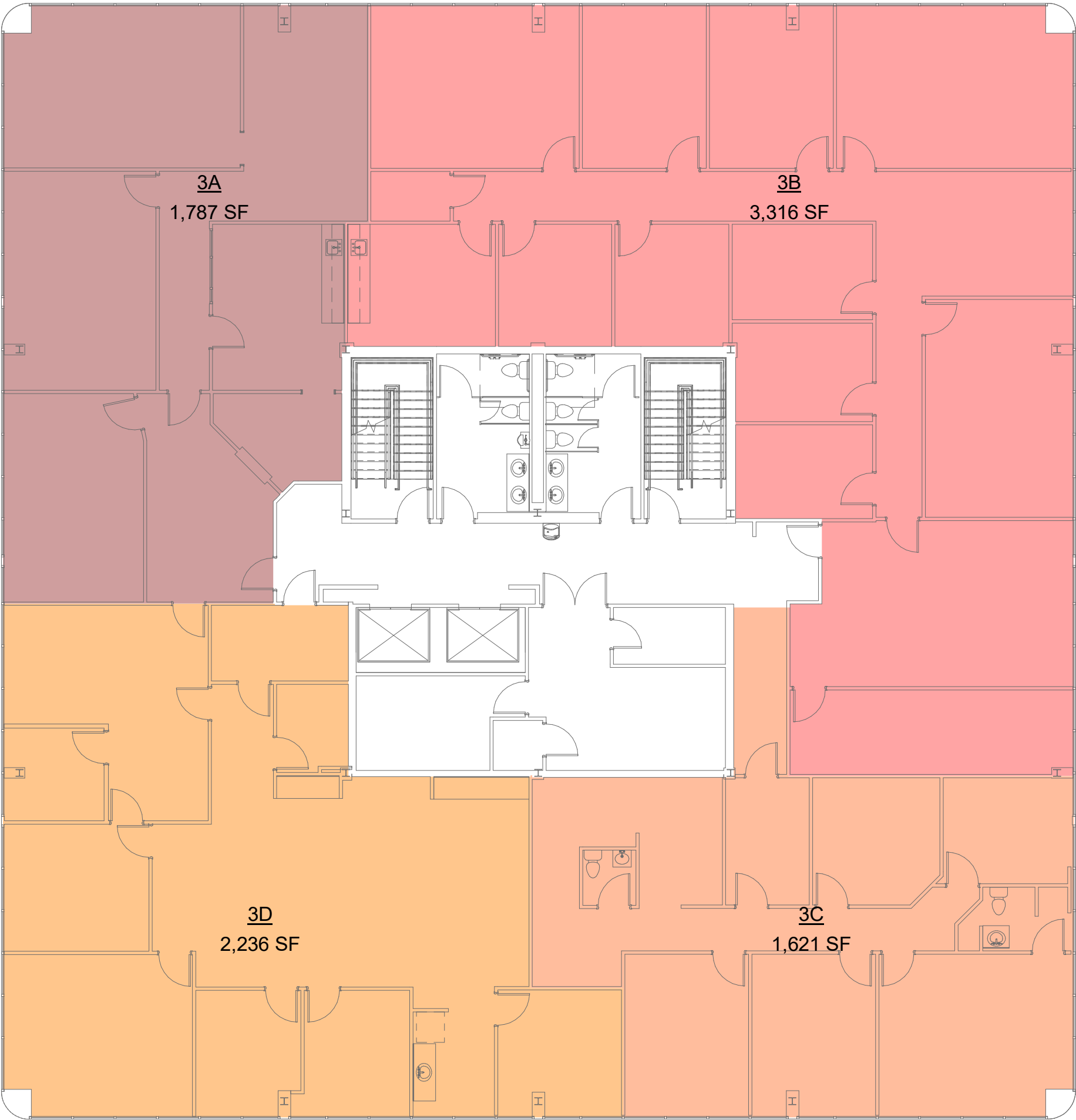
LAHAYE CENTER

201 RUE IBERVILLE
LAFAYETTE, LOUISIANA 70508



DATE ISSUED	08/16/21
REVISED	-
PLOT DATE	08/18/21 4:13:36 PM
DRAWN BY	KEM
CHECKED BY	SRP
PROJECT NO.	2106
SHEET NO.	AC0.2
OF	—

NAME	USABLE	COMMON (16%)	RENTABLE SF
3A	1,787 SF	286 SF	2,073 SF
3B	3,316 SF	531 SF	3,847 SF
3C	1,621 SF	259 SF	1,880 SF
3D	2,236 SF	358 SF	2,593 SF



1 THIRD FLOOR

SCALE: 3/32" = 1'-0"



**ZILER
ARCHITECTS**
A PROFESSIONAL ARCHITECTURAL CORPORATION
101 CALCO BLVD
LAFAYETTE, LOUISIANA 70503
337 269 6326 FAX 269 6380

DOCUMENTS PREPARED BY ZILER ARCHITECTS ARE INSTRUMENTS OF THE ARCHITECT'S SERVICE FOR USE SOLELY WITH RESPECT TO THIS PROJECT. THE ARCHITECT SHALL RETAIN ALL COMMON LAW, STATUTORY AND OTHER RESERVED RIGHTS, INCLUDING THE COPYRIGHT. THEY ARE NOT TO BE USED BY THE CONTRACTOR OR ANY SUBCONTRACTOR, MATERIAL OR EQUIPMENT SUPPLIERS OR ANYONE FOR OTHER PROJECTS OR FOR ADDITIONS TO THIS PROJECT OUTSIDE THE SCOPE OF THE WORK WITHOUT THE SPECIFIC WRITTEN CONSENT OF ZILER ARCHITECTS.

RECORD DRAWINGS FOR:

LAHAYE CENTER

201 RUE IBERVILLE
LAFAYETTE, LOUISIANA 70508



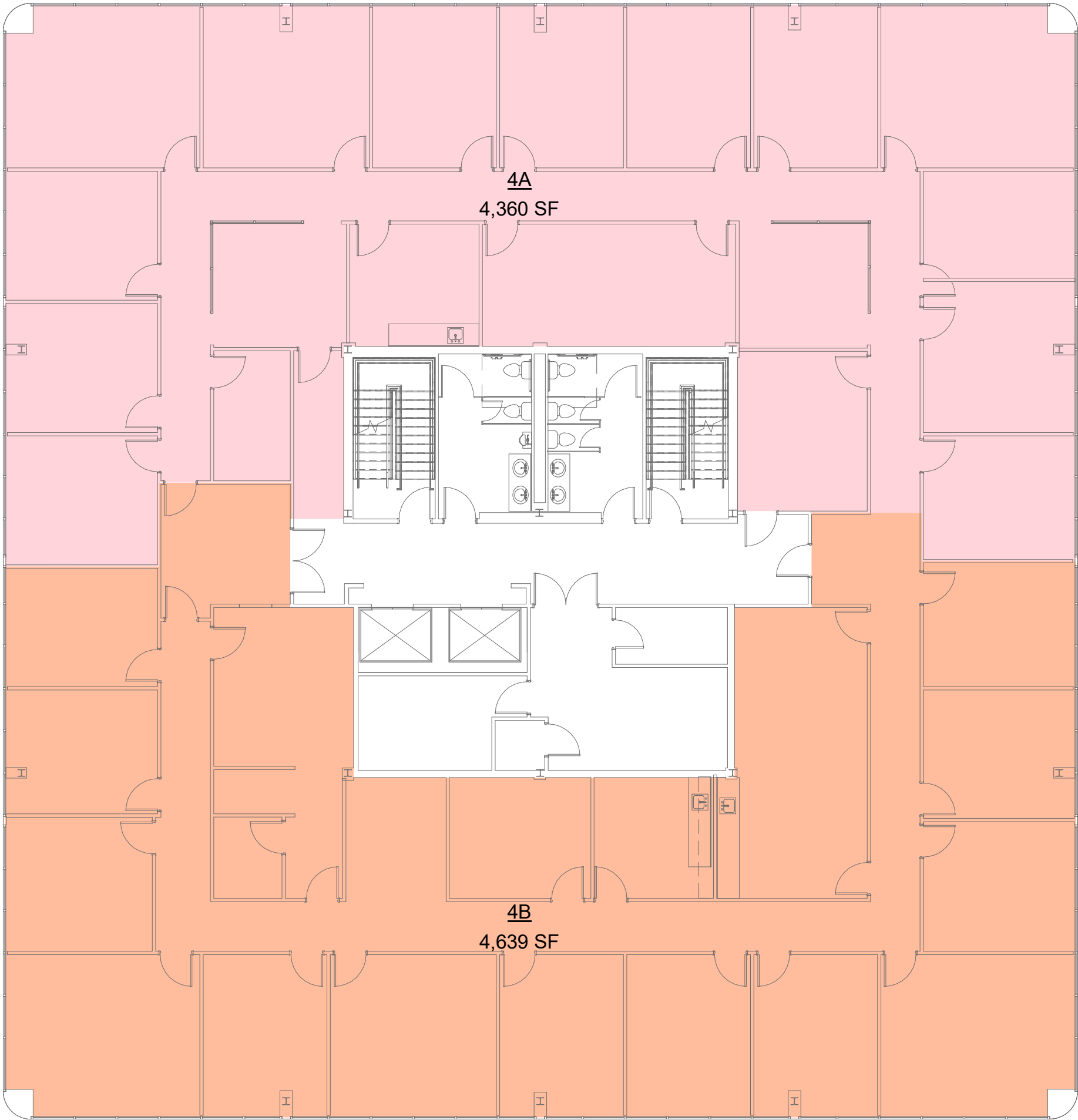
DATE ISSUED	08/16/21
REVISED	-
PLOT DATE	
08/18/21 4:13:39 PM	
DRAWN BY	
KEM	
CHECKED BY	
SRP	
PROJECT NO.	
2106	
SHEET NO.	
AC0.3	
OF	

NAME	USABLE	COMMON (16%)	RENTABLE SF
4A	4,360 SF	698 SF	5,058 SF
4B	4,639 SF	742 SF	5,382 SF

1

FOURTH FLOOR

SCALE: 3/32" = 1'-0"





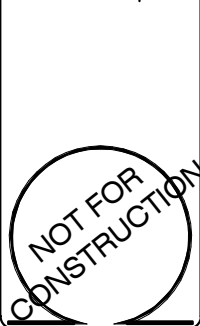
ZILER
ARCHITECTS
A PROFESSIONAL ARCHITECTURAL CORPORATION
101 CALCO BLVD
LAFAYETTE, LOUISIANA 70503
337 269 6326 FAX 269 6380

DOCUMENTS PREPARED BY ZILER ARCHITECTS ARE INSTRUMENTS OF THE ARCHITECTS SERVICE FOR USE SOLELY WITH RESPECT TO THIS PROJECT. THE ARCHITECT SHALL RETAIN ALL COMMON LAW, STATUTORY AND OTHER RESERVED RIGHTS, INCLUDING THE COPYRIGHT. THEY ARE NOT TO BE USED BY THE CONTRACTOR OR ANY SUBCONTRACTOR, MATERIAL OR EQUIPMENT SUPPLIERS OR ANYONE FOR OTHER PROJECTS OR FOR ADDITIONS TO THIS PROJECT OUTSIDE THE SCOPE OF THE WORK WITHOUT THE SPECIFIC WRITTEN CONSENT OF ZILER ARCHITECTS.

RECORD DRAWINGS FOR:

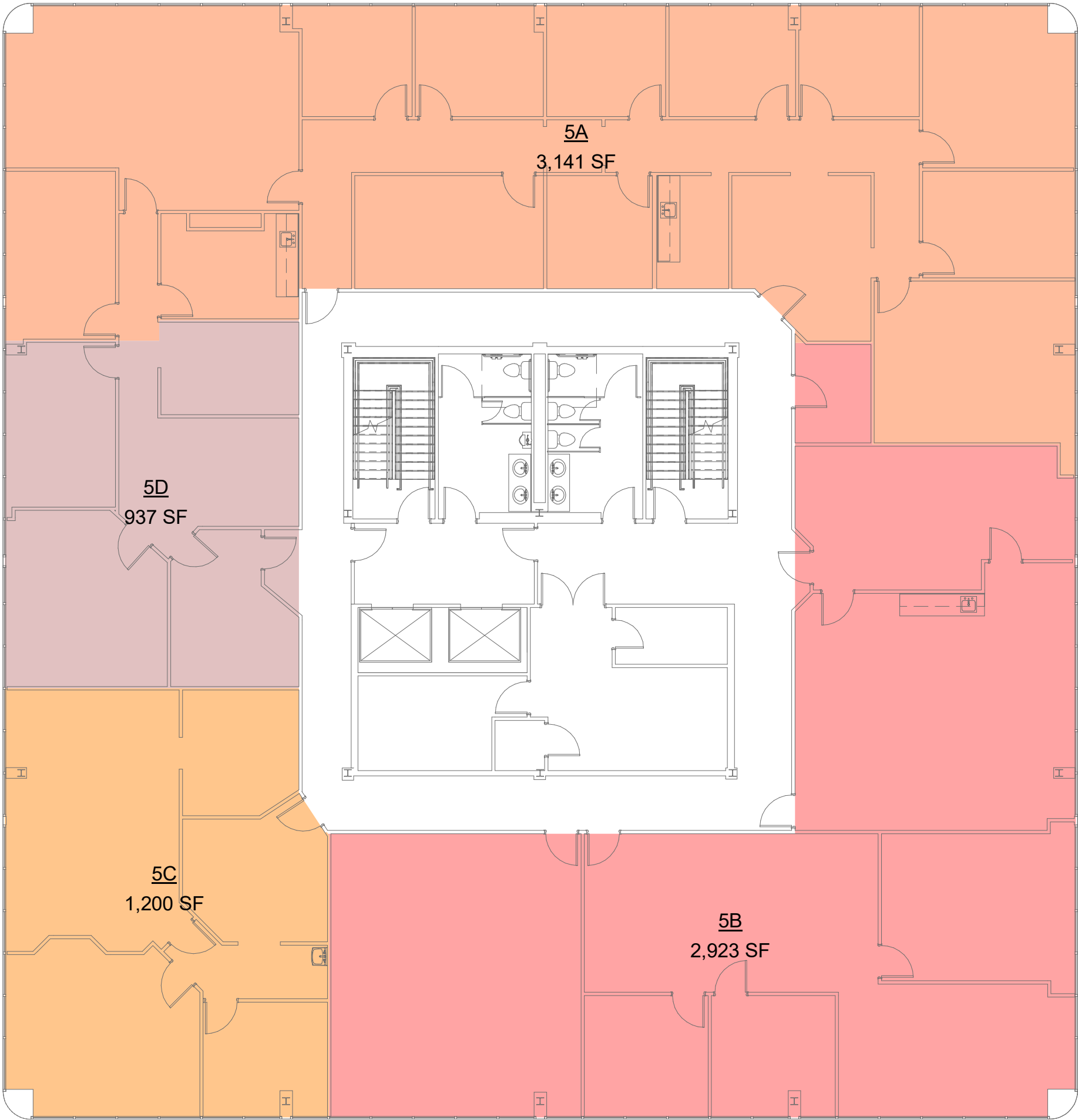
LAHAYE CENTER

201 RUE IBERVILLE
LAFAYETTE, LOUISIANA 70508



DATE ISSUED	08/16/21
REVISED	-
PLOT DATE	08/18/21 4:13:42 PM
DRAWN BY	KEM
CHECKED BY	SRP
PROJECT NO.	2106
SHEET NO.	AC0.4
OF	—

NAME	USABLE	COMMON (16%)	RENTABLE SF
5A	3,141 SF	502 SF	3,643 SF
5B	2,923 SF	468 SF	3,391 SF
5C	1,200 SF	192 SF	1,392 SF
5D	937 SF	150 SF	1,087 SF



1 FIFTH FLOOR

SCALE: 3/32" = 1'-0"



**ZILER
ARCHITECTS**
A PROFESSIONAL ARCHITECTURAL CORPORATION
101 CALCO BLVD
LAFAYETTE, LOUISIANA 70503
337 269 6326 FAX 269 6380

DOCUMENTS PREPARED BY ZILER ARCHITECTS ARE INSTRUMENTS OF THE ARCHITECTS SERVICE FOR USE SOLELY WITH RESPECT TO THIS PROJECT. THE ARCHITECT SHALL RETAIN ALL COMMON LAW, STATUTORY AND OTHER RESERVED RIGHTS, INCLUDING THE COPYRIGHT. THEY ARE NOT TO BE USED BY THE CONTRACTOR OR ANY SUBCONTRACTOR, MATERIAL OR EQUIPMENT SUPPLIERS OR ANYONE FOR OTHER PROJECTS OR FOR ADDITIONS TO THIS PROJECT OUTSIDE THE SCOPE OF THE WORK WITHOUT THE SPECIFIC WRITTEN CONSENT OF ZILER ARCHITECTS.

RECORD DRAWINGS FOR:

LAHAYE CENTER

201 RUE IBERVILLE
LAFAYETTE, LOUISIANA 70508



DATE ISSUED	08/16/21
REVISED	-
PLOT DATE	
08/18/21 4:13:46 PM	
DRAWN BY	
KEM	
CHECKED BY	
SRP	
PROJECT NO.	
2106	
SHEET NO.	
AC0.5	
OF	

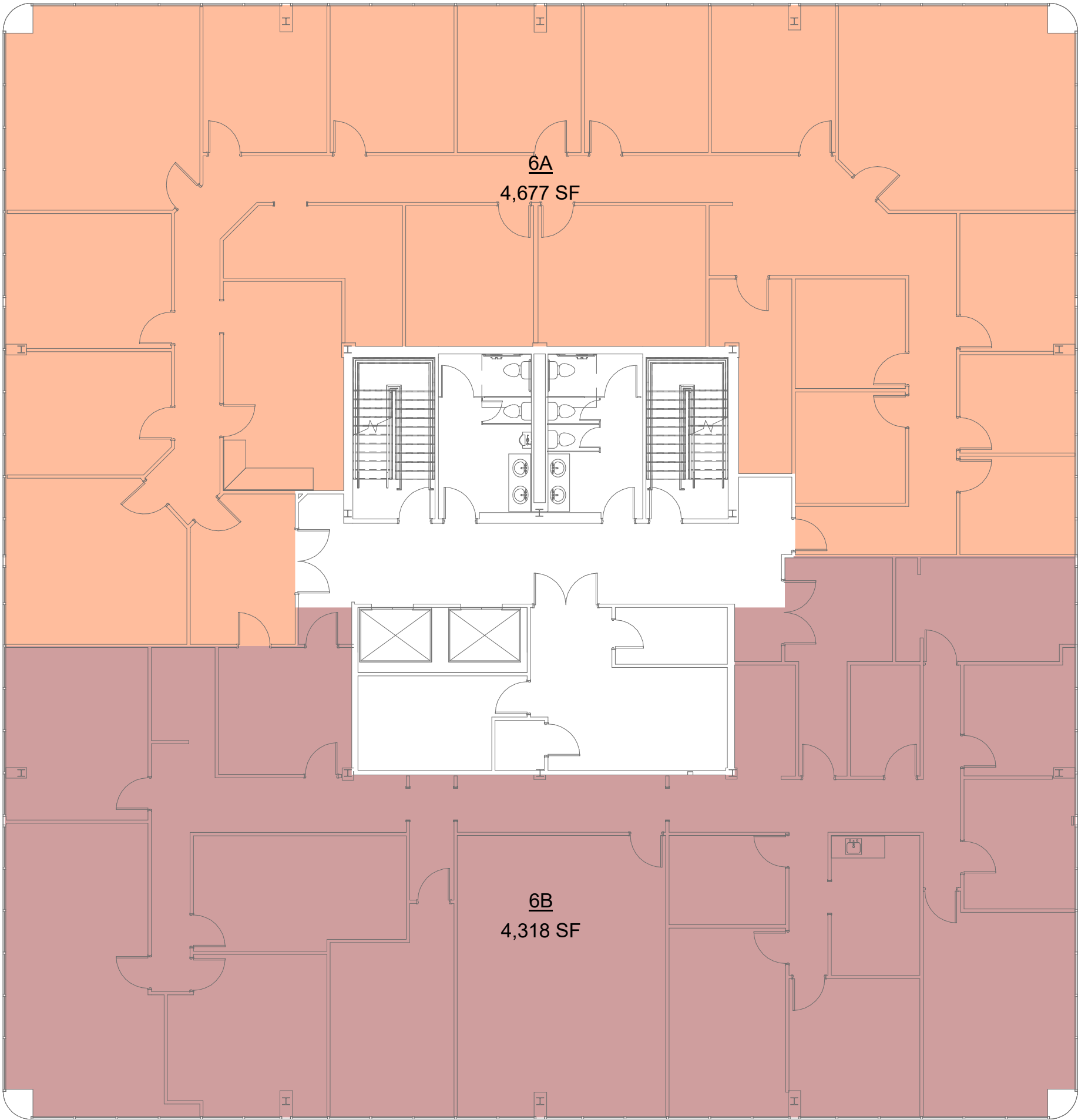
E:\2021\2021 TENANTS\2106 LAHAYE CENTER\0818\DWG\ARCH\LAHAYE CENTER (02).dwg

NAME	USABLE	COMMON (16%)	RENTABLE SF
6A	4,677 SF	748 SF	5,425 SF
6B	4,318 SF	691 SF	5,009 SF

1

SIXTH FLOOR

SCALE: 3/32" = 1'-0"





ZILER
ARCHITECTS
A PROFESSIONAL ARCHITECTURAL CORPORATION
101 CALCO BLVD
LAFAYETTE, LOUISIANA 70503
337 269 6326 FAX 269 6380

DOCUMENTS PREPARED BY ZILER ARCHITECTS ARE INSTRUMENTS OF THE ARCHITECTS SERVICE FOR USE SOLELY WITH RESPECT TO THIS PROJECT. THE ARCHITECT SHALL RETAIN ALL COMMON LAW, STATUTORY AND OTHER RESERVED RIGHTS, INCLUDING THE COPYRIGHT. THEY ARE NOT TO BE USED BY THE CONTRACTOR OR ANY SUBCONTRACTOR, MATERIAL OR EQUIPMENT SUPPLIERS OR ANYONE FOR OTHER PROJECTS OR FOR ADDITIONS TO THIS PROJECT OUTSIDE THE SCOPE OF THE WORK WITHOUT THE SPECIFIC WRITTEN CONSENT OF ZILER ARCHITECTS.

RECORD DRAWINGS FOR:

LAHAYE CENTER

201 RUE IBERVILLE
LAFAYETTE, LOUISIANA 70508

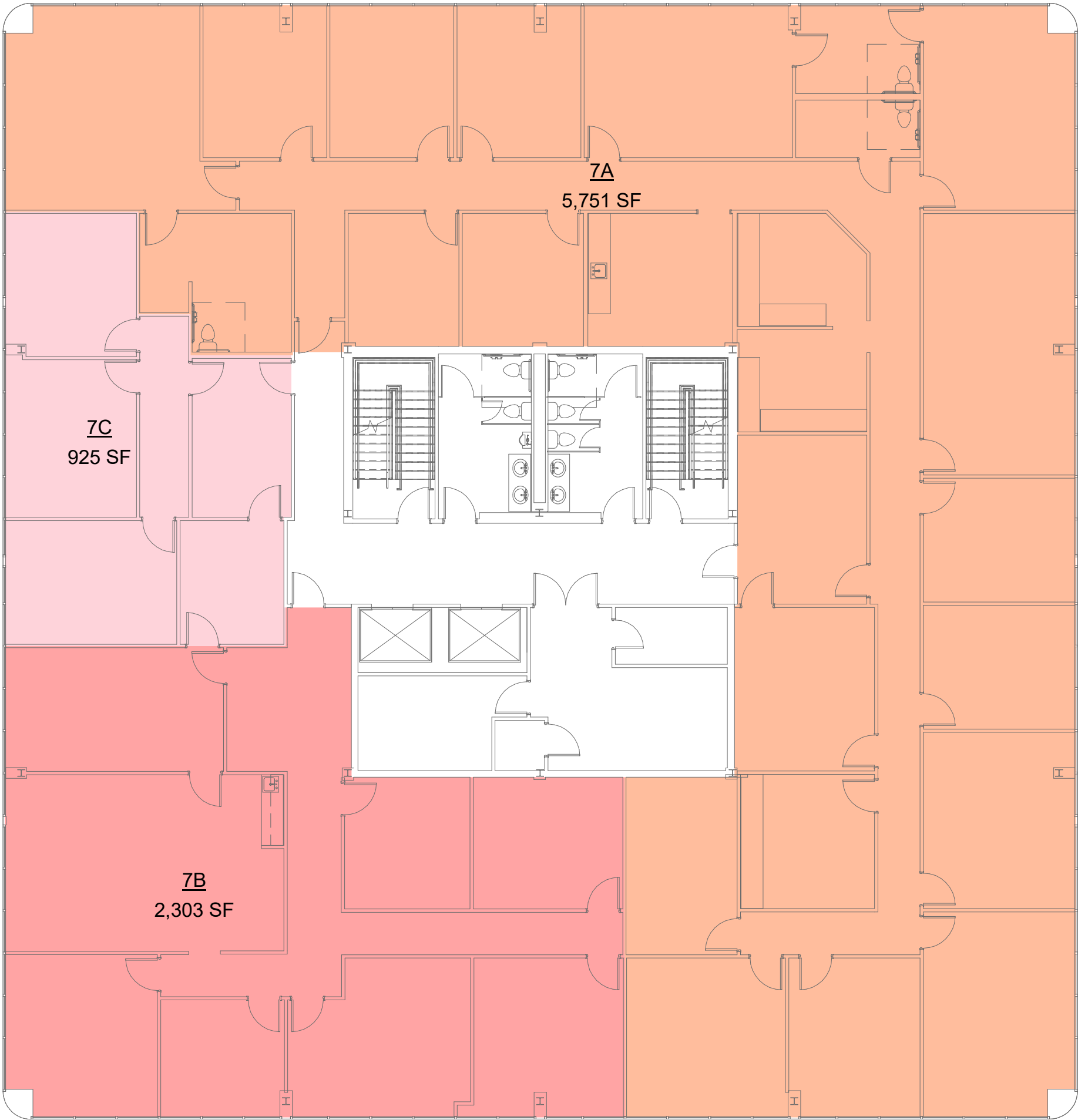


DATE ISSUED	08/16/21
REVISED	-
PLOT DATE	08/18/21 4:13:49 PM
DRAWN BY	KEM
CHECKED BY	SRP
PROJECT NO.	2106
SHEET NO.	AC0.6
OF	—

NAME	USABLE	COMMON (16%)	RENTABLE SF
7A	5,751 SF	920 SF	6,671 SF
7B	2,303 SF	368 SF	2,671 SF
7C	925 SF	148 SF	1,073 SF

1 SEVENTH FLOOR

SCALE: 3/32" = 1'-0"





**ZILER
ARCHITECTS**
A PROFESSIONAL ARCHITECTURAL CORPORATION
101 CALCO BLVD
LAFAYETTE, LOUISIANA 70503
337 269 6326 FAX 269 6380

DOCUMENTS PREPARED BY ZILER ARCHITECTS ARE INSTRUMENTS OF THE ARCHITECTS SERVICE FOR USE SOLELY WITH RESPECT TO THIS PROJECT. THE ARCHITECT SHALL RETAIN ALL COMMON LAW, STATUTORY AND OTHER RESERVED RIGHTS, INCLUDING THE COPYRIGHT. THEY ARE NOT TO BE USED BY THE CONTRACTOR OR ANY SUBCONTRACTOR, MATERIAL OR EQUIPMENT SUPPLIERS OR ANYONE FOR OTHER PROJECTS OR FOR ADDITIONS TO THIS PROJECT OUTSIDE THE SCOPE OF THE WORK WITHOUT THE SPECIFIC WRITTEN CONSENT OF ZILER ARCHITECTS.

RECORD DRAWINGS FOR:

LAHAYE CENTER

201 RUE IBERVILLE
LAFAYETTE, LOUISIANA 70508

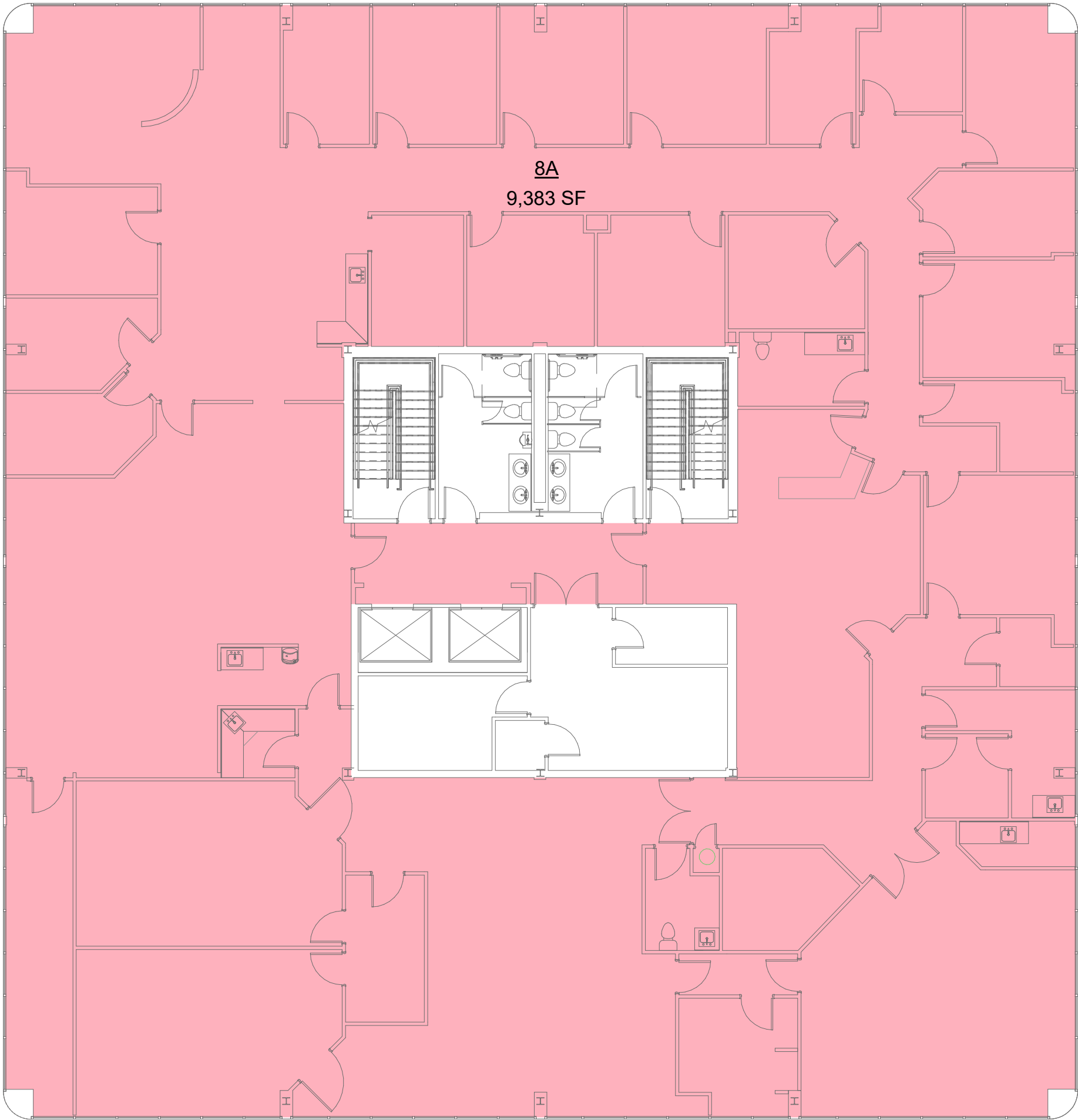
NOT FOR CONSTRUCTION

DATE ISSUED	08/16/21
REVISED	-
PLOT DATE	
08/18/21 4:13:53 PM	
DRAWN BY	
KEM	
CHECKED BY	
SRP	
PROJECT NO.	
2106	
SHEET NO.	
AC0.7	
OF	

NAME	USABLE	COMMON (16%)	RENTABLE SF
8A	9,383 SF	1,501 SF	10,884 SF

1 EIGHTH FLOOR

SCALE: 3/32" = 1'-0"





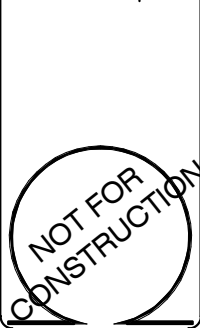
**ZILER
ARCHITECTS**
A PROFESSIONAL ARCHITECTURAL CORPORATION
101 CALCO BLVD
LAFAYETTE, LOUISIANA 70503
337 269 6326 FAX 269 6380

DOCUMENTS PREPARED BY ZILER ARCHITECTS ARE INSTRUMENTS OF THE ARCHITECTS SERVICE FOR USE SOLELY WITH RESPECT TO THIS PROJECT. THE ARCHITECT SHALL RETAIN ALL COMMON LAW, STATUTORY AND OTHER RESERVED RIGHTS, INCLUDING THE COPYRIGHT. THEY ARE NOT TO BE USED BY THE CONTRACTOR OR ANY SUBCONTRACTOR, MATERIAL OR EQUIPMENT SUPPLIERS OR ANYONE FOR OTHER PROJECTS OR FOR ADDITIONS TO THIS PROJECT OUTSIDE THE SCOPE OF THE WORK WITHOUT THE SPECIFIC WRITTEN CONSENT OF ZILER ARCHITECTS.

RECORD DRAWINGS FOR:

LAHAYE CENTER

201 RUE IBERVILLE
LAFAYETTE, LOUISIANA 70508



DATE ISSUED	08/16/21
REVISED	-
PLOT DATE	08/18/21 4:13:56 PM
DRAWN BY	KEM
CHECKED BY	SRP
PROJECT NO.	2106
SHEET NO.	AC0.8
OF	—