



# 10-UNIT MULTI-FAMILY PROPERTY IN BRIDGE CITY

1300 Bolo Court, Bridge City, LA 70094

MATT EATON, CCIM • PARTNER

OFFICE: 504.414.0703

MOBILE: 504.339.2136

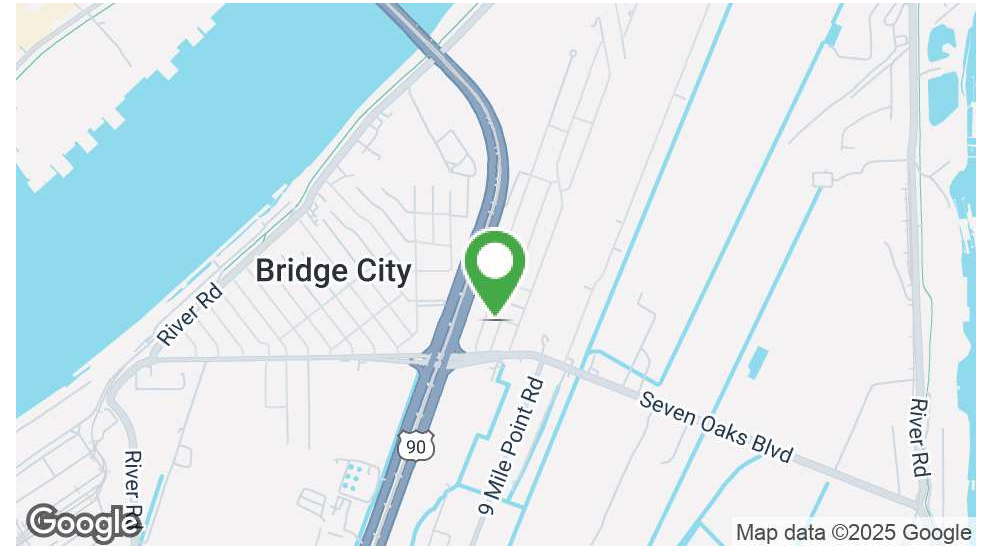
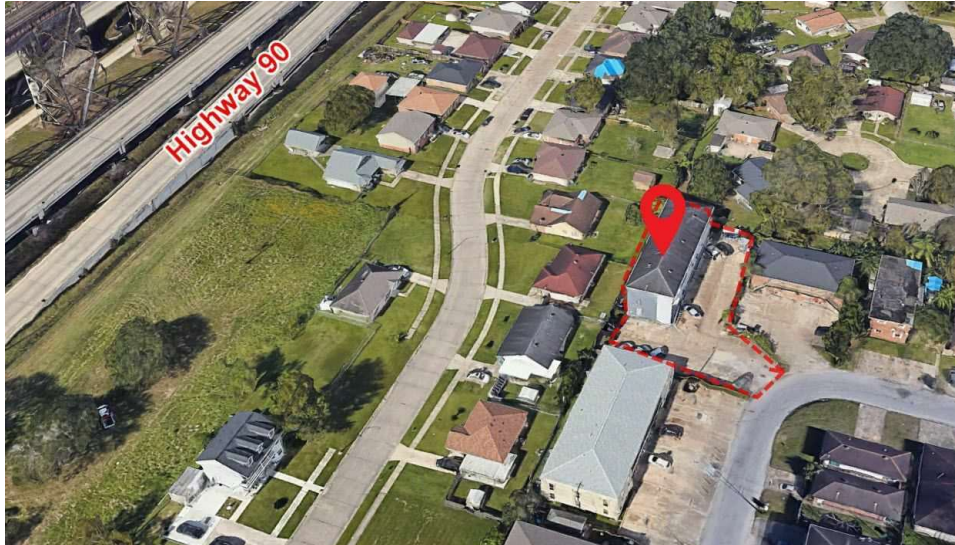
matt@matteatonccim.com

MARTIN O. MILLER III, CCIM, SIOR • PARTNER

OFFICE: 504.414.0703

MOBILE: 504.616.5700

momiller@ccim.net



## PROPERTY DESCRIPTION

Discover this prime multi-family property in the heart of Bridge City, Louisiana! This single-building asset features 10 apartments and offers a dependable income stream. Currently, 9 out of 10 units are leased, highlighting its strong rental demand. Conveniently located near the Huey P. Long Bridge, tenants benefit from the easy access to New Orleans and Metairie as well as the property's ample parking. Add this consistently highly occupied property to your portfolio.

**Unit 101:** 3BR/1BA - 1st floor

**Unit 102:** 3BR/1BA - 1st floor

**Unit 103:** 1BR/1BA - 1st floor

**Unit 104:** 1BR/1BA - 1st floor

**Unit 105:** 2BR/1.5BA - 1st floor

**Unit 106:** 2BR/1.5BA - 2nd floor

**Unit 107:** 2BR/1.5BA - 2nd floor

**Unit 108:** 2BR/1.5BA - 2nd floor

**Unit 109:** 2BR/1.5BA - 2nd floor

**Unit 110:** 2BR/1.5BA - 2nd floor

## OFFERING SUMMARY

Sale Price:	\$835,000
Number of Units:	10
Building Size:	3,579 SF

DEMOGRAPHICS	1 MILE	3 MILES	5 MILES
Total Households	1,173	27,430	114,686
Total Population	3,053	65,536	259,722
Average HH Income	\$65,217	\$106,785	\$93,299

## MULTIFAMILY PROPERTY FOR SALE

### PROPERTY SUMMARY







# 10-UNIT MULTI-FAMILY PROPERTY IN BRIDGE CITY

1300 Bolo Court, Bridge City, LA 70094

MATT EATON, CCIM • PARTNER

OFFICE: 504.414.0703

MOBILE: 504.339.2136

matt@matteatonccim.com

MARTIN O. MILLER III, CCIM, SIOR • PARTNER

OFFICE: 504.414.0703

MOBILE: 504.616.5700

momiller@ccim.net



MULTIFAMILY PROPERTY FOR SALE

ADDITIONAL PHOTOS

SOUTHEAST COMMERCIAL REAL ESTATE | 2310 19th Street Gulfport, MS 39501 | <https://southeastcre.com>



SOUTHEAST  
COMMERCIAL  
REAL ESTATE





# 10-UNIT MULTI-FAMILY PROPERTY IN BRIDGE CITY

1300 Bolo Court, Bridge City, LA 70094

MATT EATON, CCIM • PARTNER

OFFICE: 504.414.0703

MOBILE: 504.339.2136

matt@matteatonccim.com

MARTIN O. MILLER III, CCIM, SIOR • PARTNER

OFFICE: 504.414.0703

MOBILE: 504.616.5700

momiller@ccim.net



MULTIFAMILY PROPERTY FOR SALE

AERIAL



SOUTHEAST  
COMMERCIAL  
REAL ESTATE

SOUTHEAST COMMERCIAL REAL ESTATE | 2310 19th Street Gulfport, MS 39501 | <https://southeastcre.com>







# 10-UNIT MULTI-FAMILY PROPERTY IN BRIDGE CITY

1300 Bolo Court, Bridge City, LA 70094

MATT EATON, CCIM • PARTNER  
OFFICE: 504.414.0703  
MOBILE: 504.339.2136  
matt@matteatonccim.com

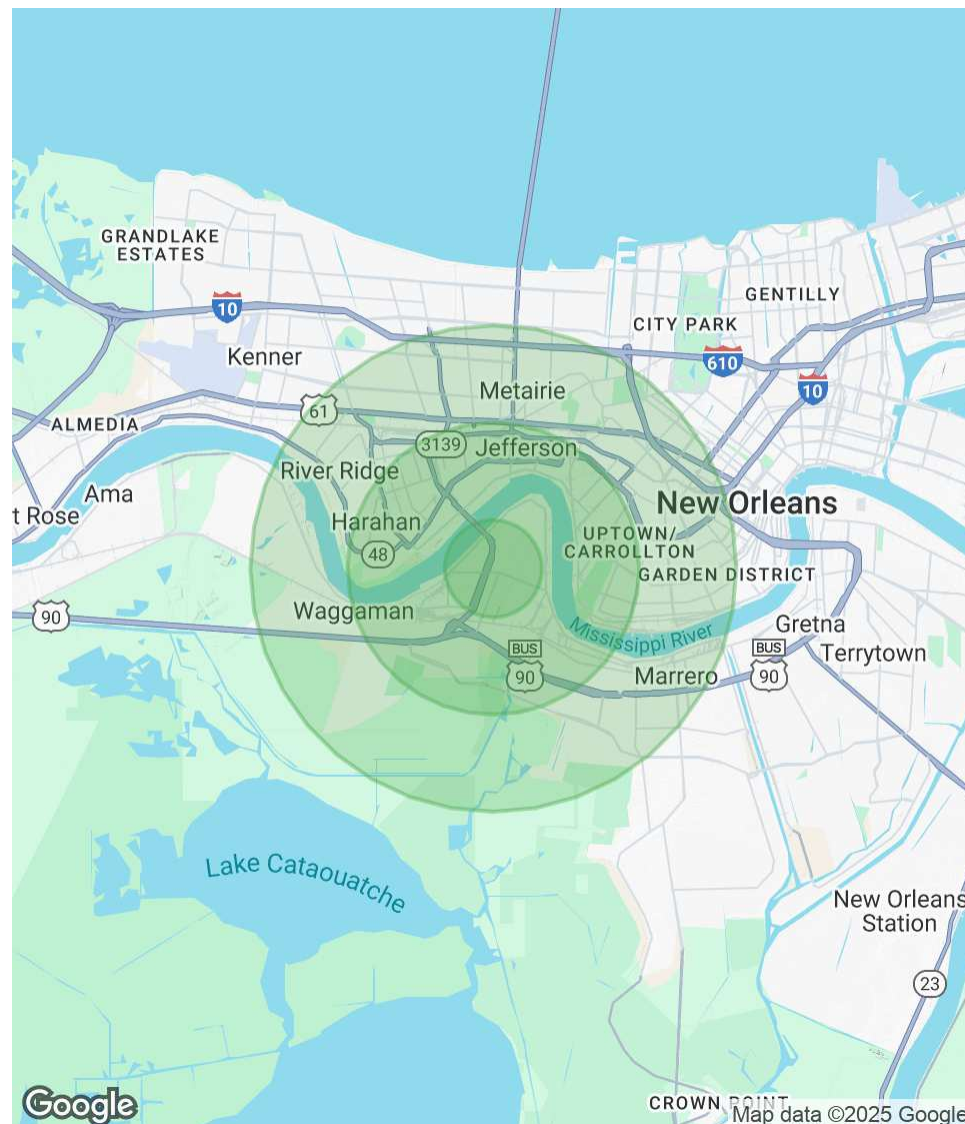
MARTIN O. MILLER III, CCIM, SIOR • PARTNER  
OFFICE: 504.414.0703  
MOBILE: 504.616.5700  
momiller@ccim.net

POPULATION	1 MILE	3 MILES	5 MILES
Total Population	3,053	65,536	259,722
Average Age	41	41	41
Average Age (Male)	40	40	40
Average Age (Female)	42	41	42

HOUSEHOLDS & INCOME	1 MILE	3 MILES	5 MILES
Total Households	1,173	27,430	114,686
# of Persons per HH	2.6	2.4	2.3
Average HH Income	\$65,217	\$106,785	\$93,299
Average House Value	\$175,852	\$481,561	\$421,928

Demographics data derived from AlphaMap



MULTIFAMILY PROPERTY FOR SALE

DEMOGRAPHICS MAP & REPORT

