



NALatter&Blum

FOR LEASE

Turnkey Restaurant in High-Traffic Location

3710 Common Street, Lake Charles, LA 70605

Presented By:

Joel Davidson, CCIM

Commercial Sales & Leasing

O: 337.310.7333 | C: 337.529.6710

joeldavidson@latterblum.com



PROPERTY HIGHLIGHTS

- Prime 3,600 SF Restaurant Space
- This fully equipped, turnkey restaurant space includes a bar, wood fire pizza oven, and restaurant equipment, providing an excellent foundation for a new or expanding dining establishment
- Located in a thriving retail center with strong neighboring tenants, this space benefits from consistent foot traffic and a built-in customer base
- The spacious dining area allows for flexible seating arrangements
- Offers ample parking

OFFERING SUMMARY

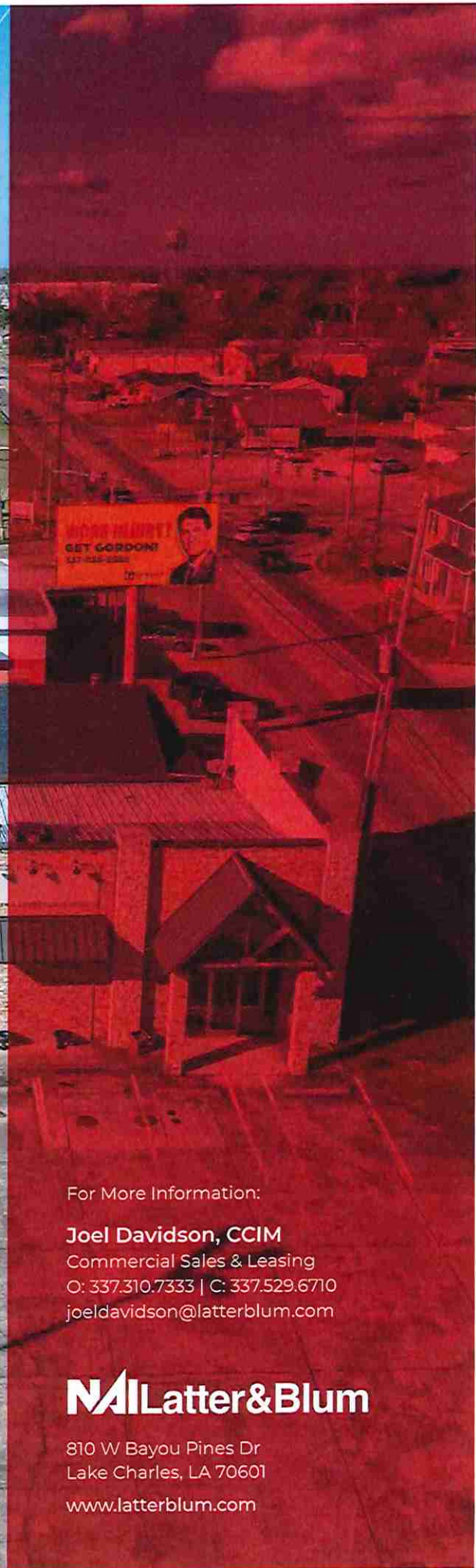
Lease Rate:	\$20.00 SF/yr (NN)
Building Size:	3,600 SF



INFORMATION SUBJECT TO VERIFICATION & NO LIABILITY FOR ERRORS & OMISSION ASSUMED. // LICENSED IN LOUISIANA



INFORMATION SUBJECT TO VERIFICATION & NO LIABILITY FOR ERRORS & OMISSION ASSUMED. // LICENSED IN LOUISIANA



For More Information:

Joel Davidson, CCIM

Commercial Sales & Leasing

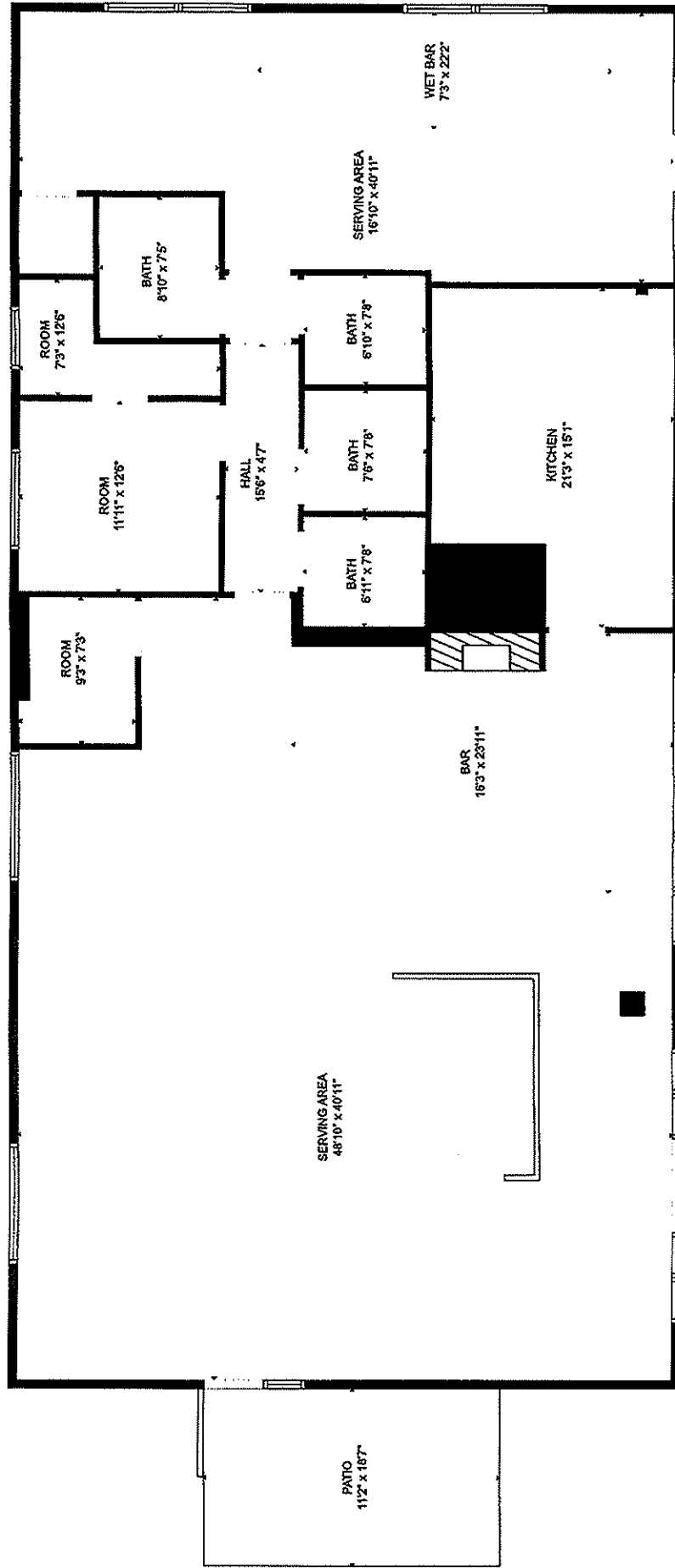
O: 337.310.7333 | C: 337.529.6710

joeldavidson@latterblum.com

NALatter&Blum

810 W Bayou Pines Dr
Lake Charles, LA 70601

www.latterblum.com



FLOOR PLAN CREATED BY CUSICASA APP. MEASUREMENTS DEEMED HIGHLY RELIABLE BUT NOT GUARANTEED.