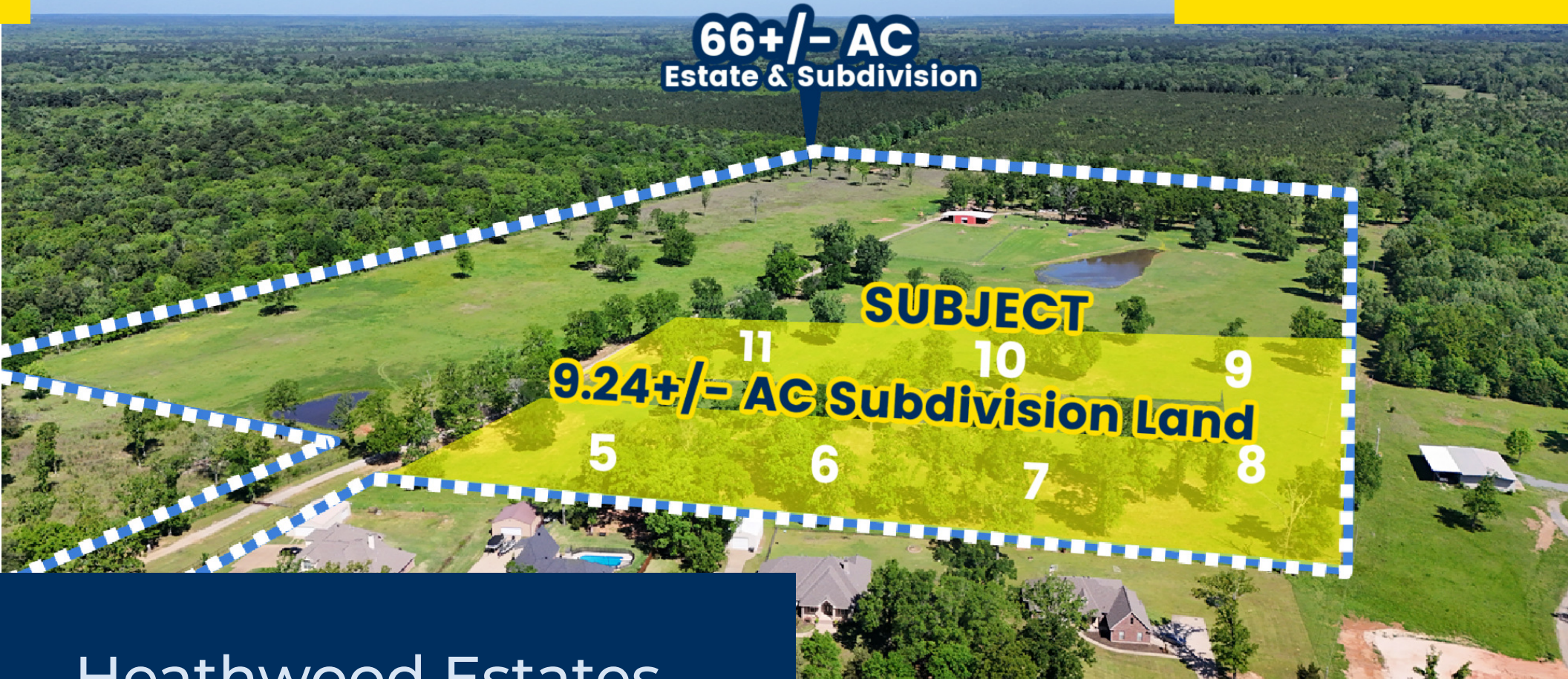


**66+/- AC**  
Estate & Subdivision

**SUBJECT**  
**9.24+/- AC Subdivision Land**



Heathwood Estates  
**SUBDIVISION LAND**  
**\$390,000**

**Joe Fleming, LA & TX Licensed Broker Agent**

Direct 318.698.1108  
Mobile 318.465.0930  
JoeF@Sealynet.com

**Sealy Real Estate Services**

333 Texas Street, Suite 1050  
Shreveport, LA 71101

318.222.8700  
www.sealynet.com



### Property Highlights

- **Asking Price:** \$390,000
- **Acreage:** 9.24+/- AC
- **Additional Offering:** 57+/- AC estate with home and barn available separately for \$1,400,000
- **Combined Offering:** Entire 67+/-AC available at \$1,790,000

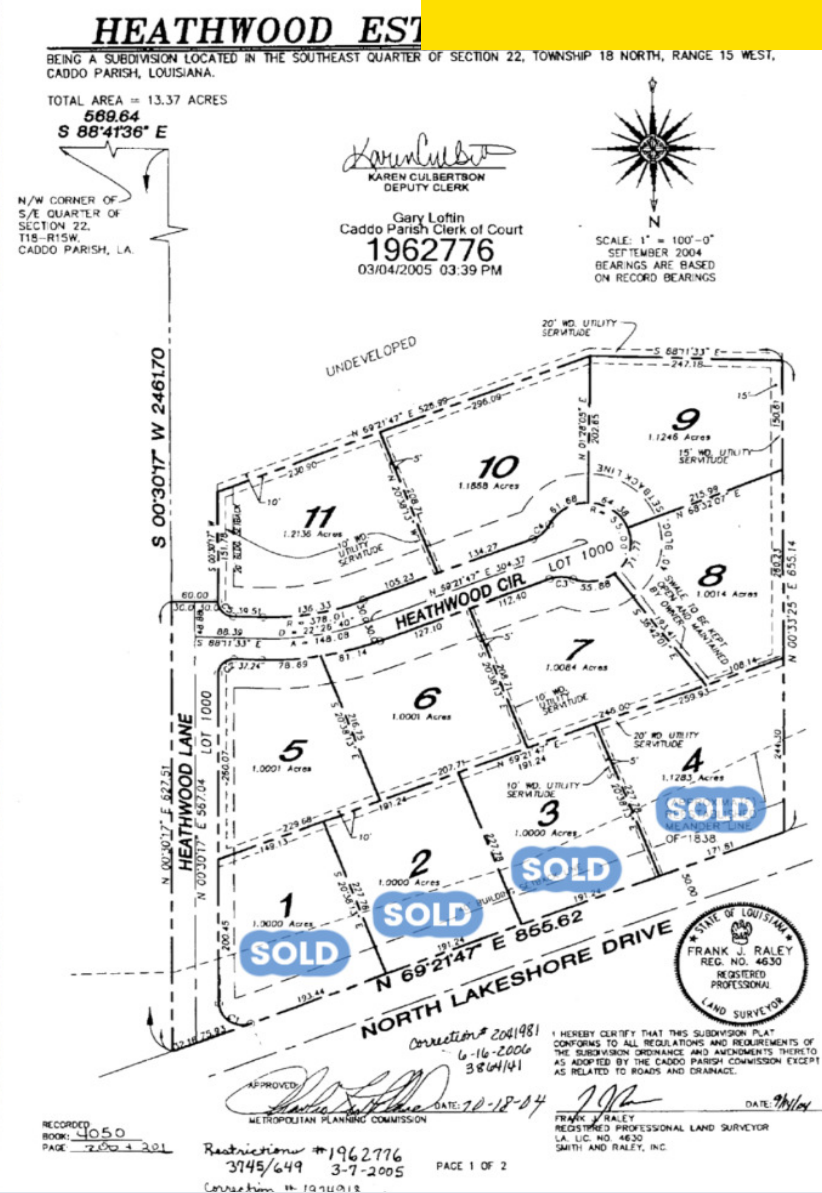
### Location Overview

Ideally situated less than 20 minutes from Downtown Shreveport, this property offers the best of both worlds: quiet rural living with quick access to major thoroughfares. Interstates 49 and 220 are just a 10-minute drive away, and I-20 and LA 3132 (Inner Loop) are nearby, making commutes and connections a breeze. Despite its accessibility, the area remains peaceful and private—perfect for those seeking space, investment opportunities, or a working farm near city conveniences.



**6670 N Lakeshore Dr**  
**Shreveport, LA 71107**

# Development Land / Residential For Sale



**Sealy Real Estate Services**  
333 Texas Street, Suite 1050  
Shreveport, LA 71101  
318.222.8700  
[www.sealynet.com](http://www.sealynet.com)

**Joe Fleming, LA & TX Licensed Broker Agent**  
Direct 318.698.1108  
Mobile 318.465.0930  
JoeF@Sealynet.com

All information set forth in this brochure has been obtained from the owner, personal observation, or other reliable sources. Sealy Real Estate Services, LLC does not guarantee the accuracy of this information and makes no representations or warranties, expressed or implied, in this brochure. Information contained herein is subject to change without notice.