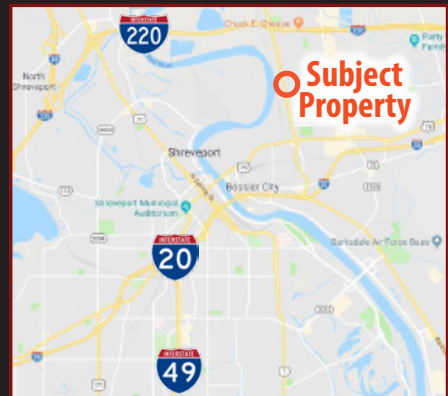




GREENACRES OFFICE PARK OFFICE SPACES FOR LEASE

2285 BENTON ROAD, BOSSIER CITY, LA 71111

- Professional Office Suites for lease:
 - ***Suite A-200:** 680 SF (completely remodeled), \$15 PSF modified gross (Water included), 3 Offices/Reception Area
 - ***LTM100:** 800 SF, \$20 PSF modified gross
 - ***Suite B-201:** 1,150 SF, \$15 PSF (Water included), 4 Offices, Reception Area
 - ***Suite B-200:** 1,360 SF, \$17 PSF, 5 Offices and Reception
 - ***Suite D-101:** 1,575 SF, \$17 PSF modified gross
- Convenient location one block south of I-220
- Large parking lot offers ample free parking
- On site ownership and management
- Competitive lease rates
- Traffic count: 33,000 vehicles per day



For more information, contact:

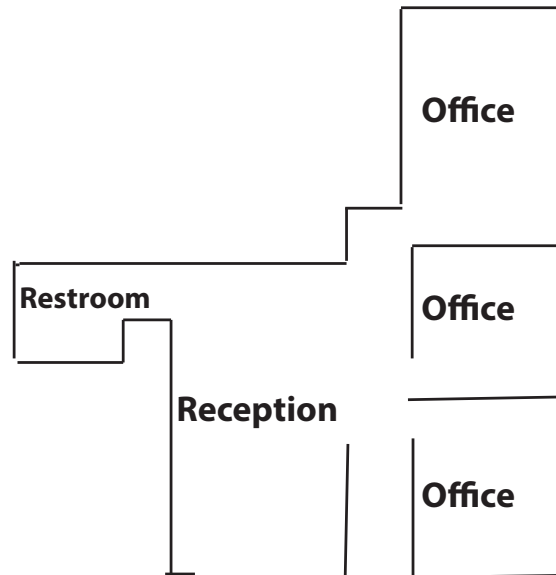
Jason Brady | 318.222.2244 | jbrady@vintagerealty.com

Chris Susilovich | 318.222.2244 | csusilovich@vintagerealty.com

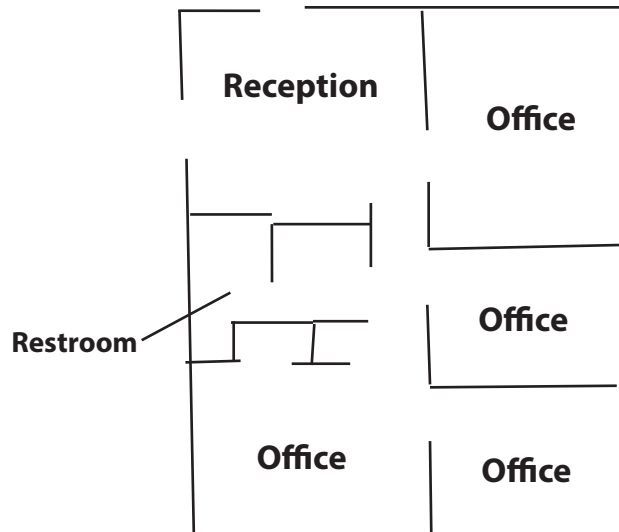
ALL INFORMATION CONTAINED HEREIN IS BELIEVED TO BE ACCURATE, BUT IS NOT WARRANTED AND NO LIABILITY OF ERRORS OR OMISSIONS IS ASSURED BY EITHER THE PROPERTY OWNER OR VINTAGE REALTY COMPANY OR ITS AGENTS AND EMPLOYEES. PRICES AS STATED HEREIN AND PRODUCT AVAILABILITY IS SUBJECT TO CHANGE AND/OR SALE OR LEASE WITHOUT PRIOR NOTICE, AND ALL SIZES AND DIMENSIONS ARE SUBJECT TO CORRECTION. REV 6/2025



FLOOR PLANS



A-200, 680 SF



B-201, 1,150 SF



For More Information Contact:

Jason Brady | 318.222.2244 | jbrady@vintagerealty.com

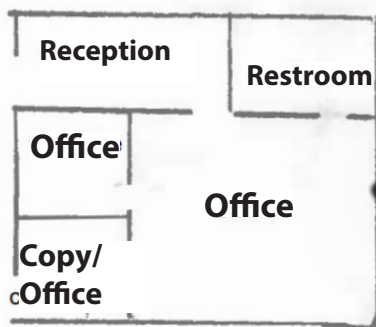
Chris Susilovich | 318.222.2244 | csusilovich@vintagerealty.com

ALL INFORMATION CONTAINED HEREIN IS BELIEVED TO BE ACCURATE, BUT IS NOT WARRANTED AND NO LIABILITY OF ERRORS OR OMISSIONS IS ASSURED BY EITHER THE PROPERTY OWNER OR VINTAGE REALTY COMPANY OR ITS AGENTS AND EMPLOYEES. PRICES AS STATED HEREIN AND PRODUCT AVAILABILITY IS SUBJECT TO CHANGE AND/OR SALE OR LEASE WITHOUT PRIOR NOTICE, AND ALL SIZES AND DIMENSIONS ARE SUBJECT TO CORRECTION. 6/2025

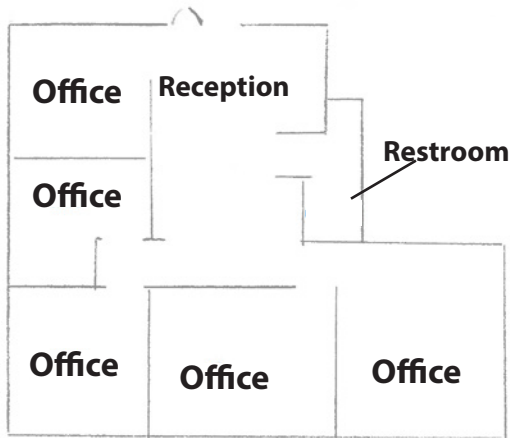
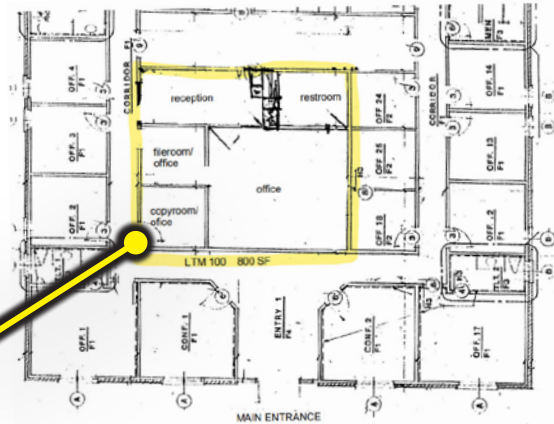
GREENACRES OFFICE PARK OFFICE SPACES FOR LEASE

2285 BENTON ROAD
BOSSIER CITY, LA 71111

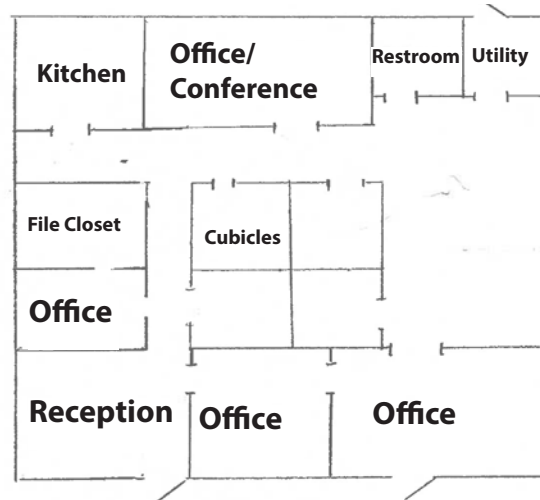
FLOOR PLANS



LTM100, 800 SF



B-200, 1,360 SF



D-101, 1,575 SF



For More Information Contact:

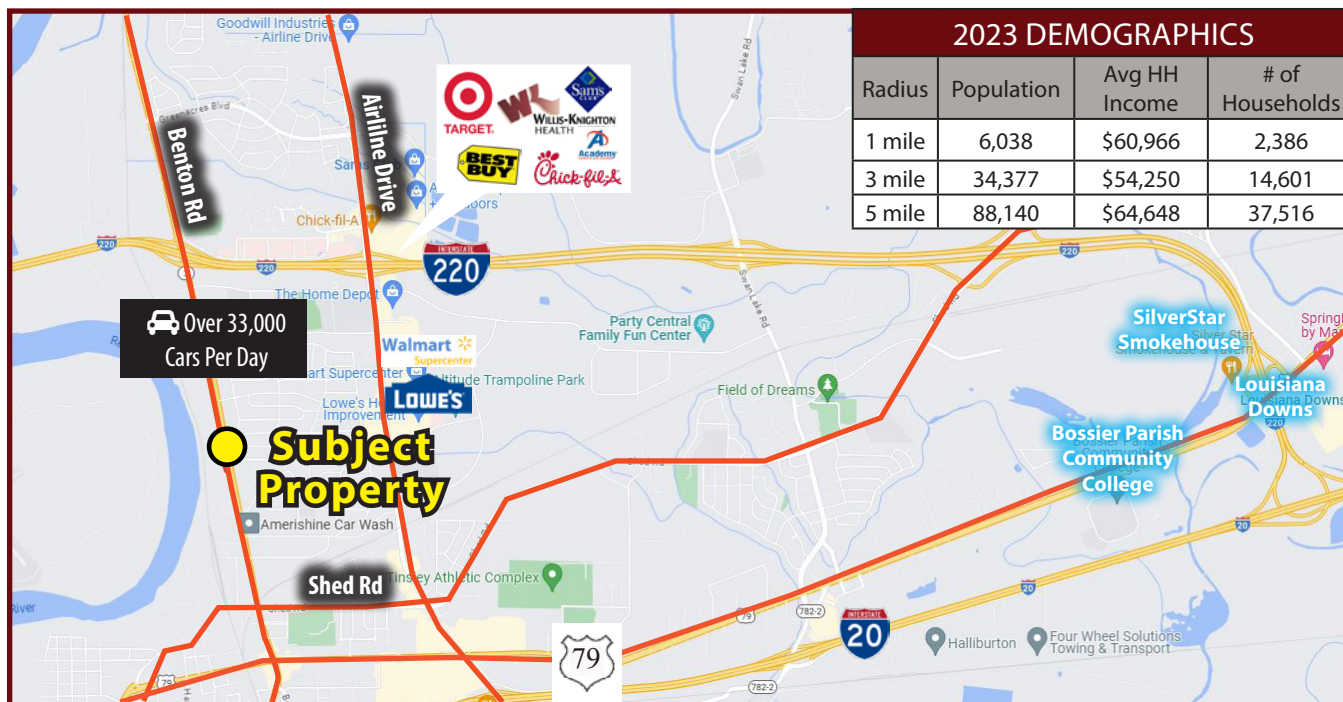
Jason Brady | 318.222.2244 | jbrady@vintagerealty.com

Chris Susilovich | 318.222.2244 | csusilovich@vintagerealty.com

ALL INFORMATION CONTAINED HEREIN IS BELIEVED TO BE ACCURATE, BUT IS NOT WARRANTED AND NO LIABILITY OF ERRORS OR OMISSIONS IS ASSURED BY EITHER THE PROPERTY OWNER OR VINTAGE REALTY COMPANY OR ITS AGENTS AND EMPLOYEES. PRICES AS STATED HEREIN AND PRODUCT AVAILABILITY IS SUBJECT TO CHANGE AND/OR SALE OR LEASE WITHOUT PRIOR NOTICE, AND ALL SIZES AND DIMENSIONS ARE SUBJECT TO CORRECTION. 6/2025

GREENACRES OFFICE PARK OFFICE SPACES FOR LEASE

2285 BENTON ROAD
BOSSIER CITY, LA 71111



For More Information Contact:

Jason Brady | 318.222.2244 | jbrady@vintagerealty.com

Chris Susilovich | 318.222.2244 | csusilovich@vintagerealty.com

ALL INFORMATION CONTAINED HEREIN IS BELIEVED TO BE ACCURATE, BUT IS NOT WARRANTED AND NO LIABILITY OF ERRORS OR OMISSIONS IS ASSURED BY EITHER THE PROPERTY OWNER OR VINTAGE REALTY COMPANY OR ITS AGENTS AND EMPLOYEES. PRICES AS STATED HEREIN AND PRODUCT AVAILABILITY IS SUBJECT TO CHANGE AND/OR SALE OR LEASE WITHOUT PRIOR NOTICE, AND ALL SIZES AND DIMENSIONS ARE SUBJECT TO CORRECTION. 6/2025