

SUMMARY

AERIAL

SURVEY

PHOTOS

DEMOGRAPHICS

FOR SALE

PROPERTY OVERVIEW

7370 Chef Menteur Highway is an excellent location for a medical office, a government user, a house of worship, or a service-oriented business. This well-maintained, elevator-served, two-story office building has a well-designed floor plan consisting of a waiting room with offices on the 1st floor and a spacious assembly room on the 2nd floor.

Built in 1969 and occupied since by the International Union of Operating Engineers - Local 406, the property offers ample parking with nearly 36,000 SF of paved parking surface and +/- 1.5 acres of yard that can be utilized for staging, storage, or recreational use. The location has fast, convenient access to Interstate 10.

PRICE

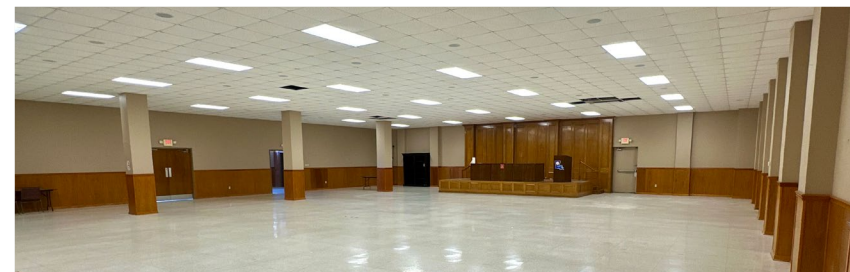
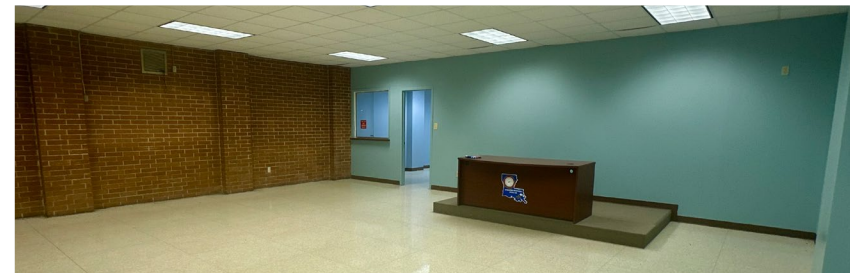
- \$975,000

BUILDING INFO

- **Total Building** +/- 15,000 SF
- **First Floor:** Large waiting room, conference room, and kitchen/breakroom
- **Second Floor:** Spacious assembly room with kitchen
- **Year Constructed** 1969
- **Year Renovation** 2006

LAND INFO

- **Total Lot Size** 2.8 Acres
- **Paved Parking Area** +/- 36,000 SF
- **Rear Yard** +/- 1.5 Acres
- **Zoning** C-1



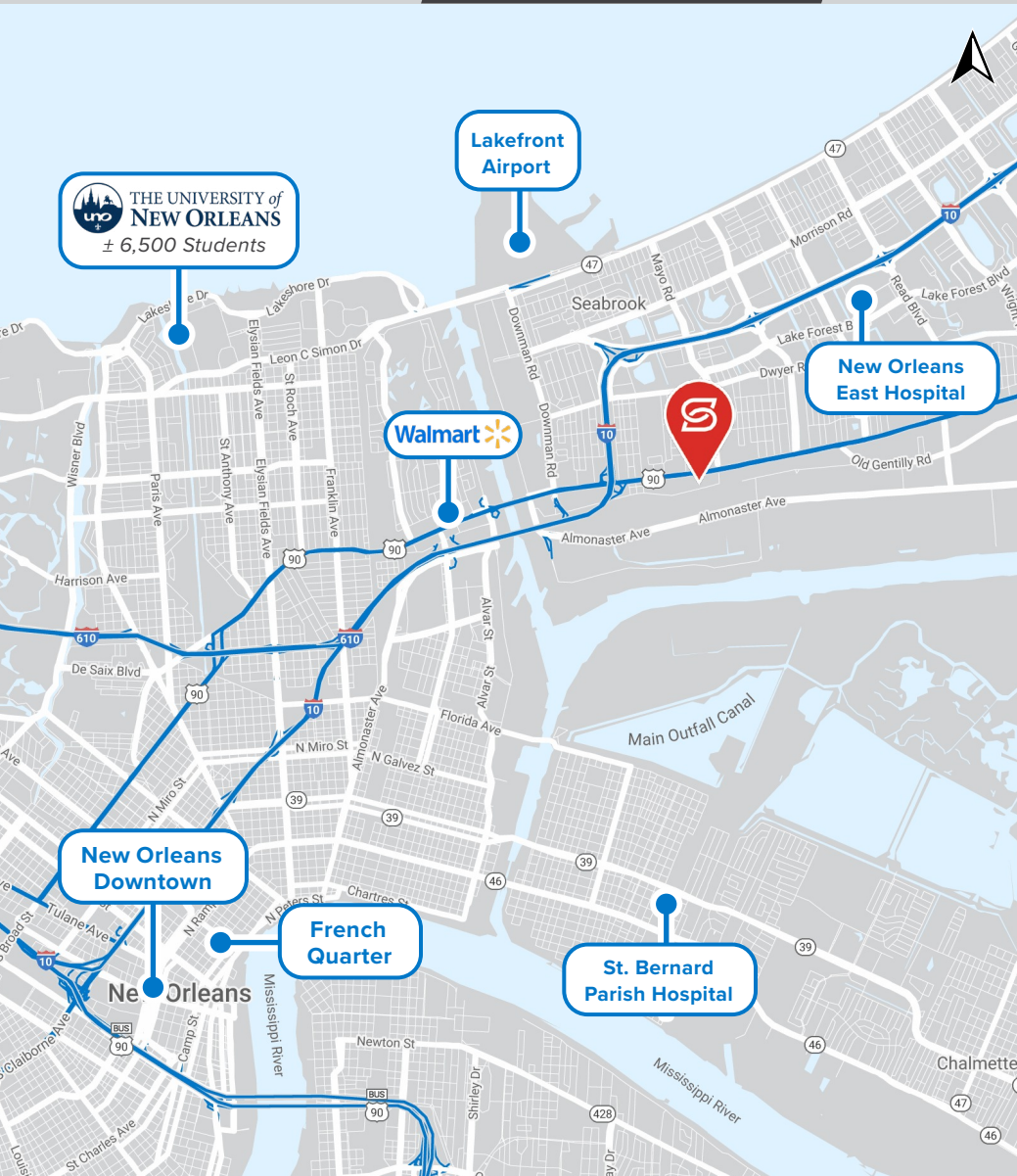
SUMMARY

AERIAL

SURVEY

PHOTOS

DEMOGRAPHICS



SUMMARY

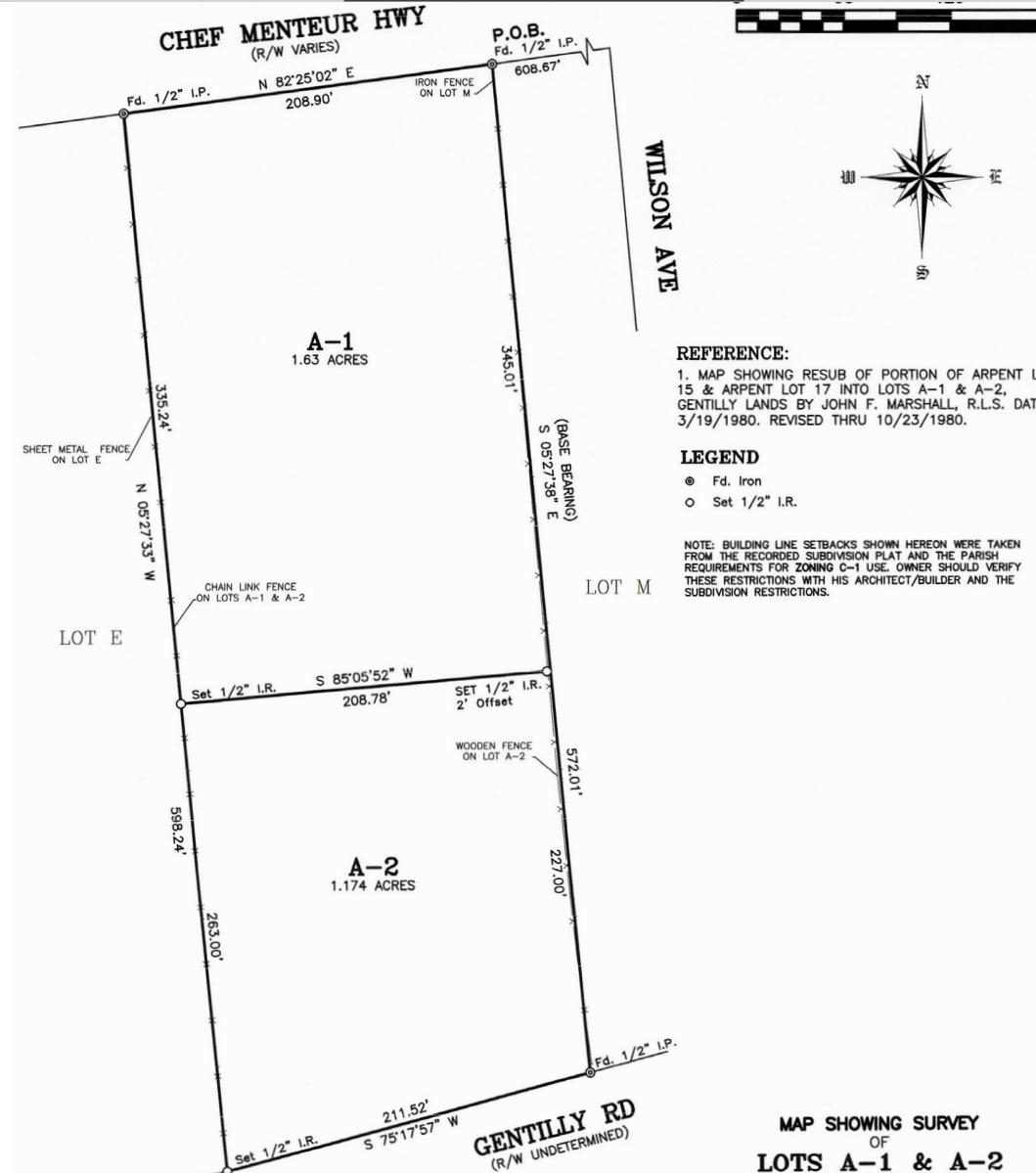
AERIAL

SURVEY

PHOTOS

DEMOGRAPHICS

Click image for larger view



SUMMARY

AERIAL

SURVEY

PHOTOS

DEMOGRAPHICS



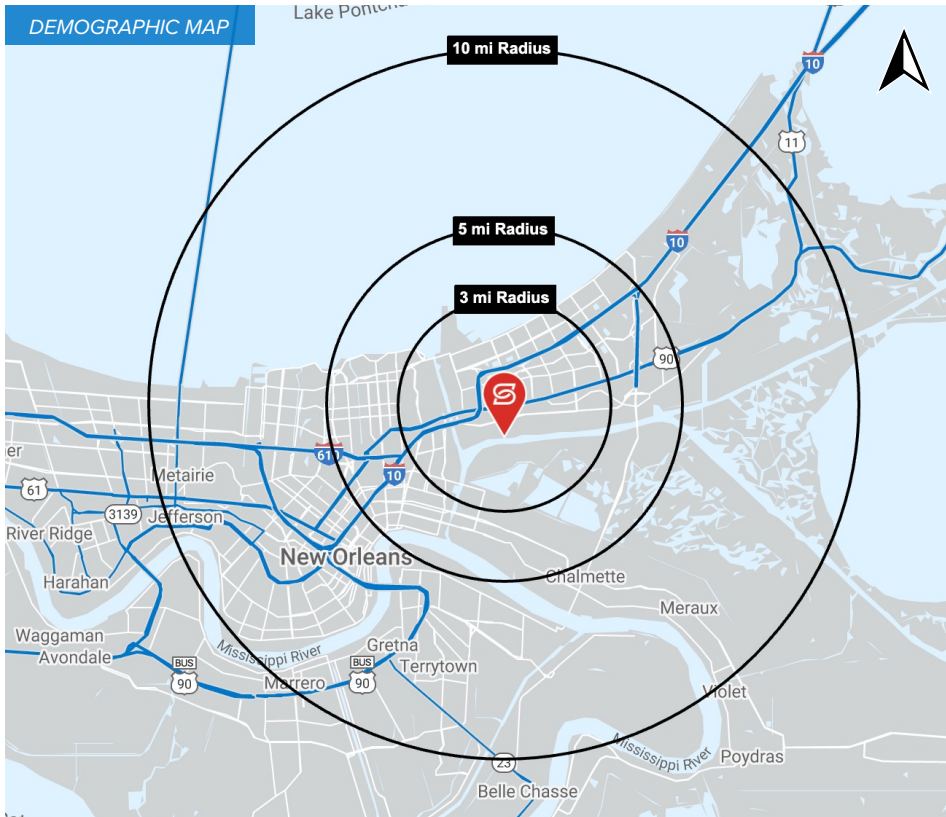
SUMMARY

AERIAL

SURVEY

PHOTOS

DEMOGRAPHICS



2025 DEMOGRAPHICS

3 MILE

5 MILE

10 MILE



POPULATION

57,112

163,745

530,677

3 MILE

5 MILE

10 MILE



AVG. HH INCOME

\$57,452

\$68,402

\$94,793

3 MILE

5 MILE

10 MILE



HOUSEHOLDS

22,131

69,307

232,173