

6797-6803

BAYOU BLACK DR.

GIBSON, LOUISIANA 70356

FOR SALE OR LEASE

±56.7 ACRES

WATERFRONT INDUSTRIAL LAND
WITH BARGE ACCESS



AMELIA

MORGAN CITY

LAKE PALOURDE

WATCH VIDEO

INTRACOASTAL WATERWAY &
GULF OF MEXICO

BAYOU BLACK

±1,570 FT

CBRE

HIGHLIGHTS



HIGHLIGHTS



Barge Access

±1,570 LF of waterfront with 900 FT of bulkhead with barge access. Water depth maintained by United States Army Corps of Engineers at ±22 FT



Development

Approximately ±47.1 acres of developable land with ±34 acres of compacted limestone yard and ±28,500 square feet of concrete work slabs



Site Improvements

Included with a 5,000 SF pavilion building, portable offices, a guard entrance building and a truck scale structure with truck scale.



Crane Served

550-ton waterfront boom hoist crane with concrete foundations

SITE SPECIFICATIONS

Property Highlights

- + ±56.7 acres of land
 - ±47.1 acres of developable land
 - ±34 acres of compacted limestone yard
- + 1,570 (+/-) feet of waterfront with 900 (+/-) feet of bulkhead
- + 550-ton waterfront boom hoist crane with concrete foundations
- + Water depth maintained by the United States Army Corps of Engineers at 22 (+/-) feet
- + ±28,500 SF concrete work slabs
- + 5,000 Square foot pavilion building
- + Heavy industrial zoning (HI)
- + Portable offices, a guard entrance building and a truck scale structure with truck scale
- + Access to Intracoastal Waterway and Gulf of Mexico

OFFERING

Sales Price	\$5,500,000
Lease Rate	\$35,000 per month



AERIAL



LAKE PALOURDE

N

MORGAN CITY

90

SITE

90

182

AMELIA

90

- #1- DHD Offshore Services
- #2- MARS
- #3- Diamond Services Shipyard
- #4- Apache Industrial Services
- #5- EMR Southern Recycling
- #6- Tidewater
- #7- Bollinger Shipyards



#5

#4



#6



#7



#3

#2

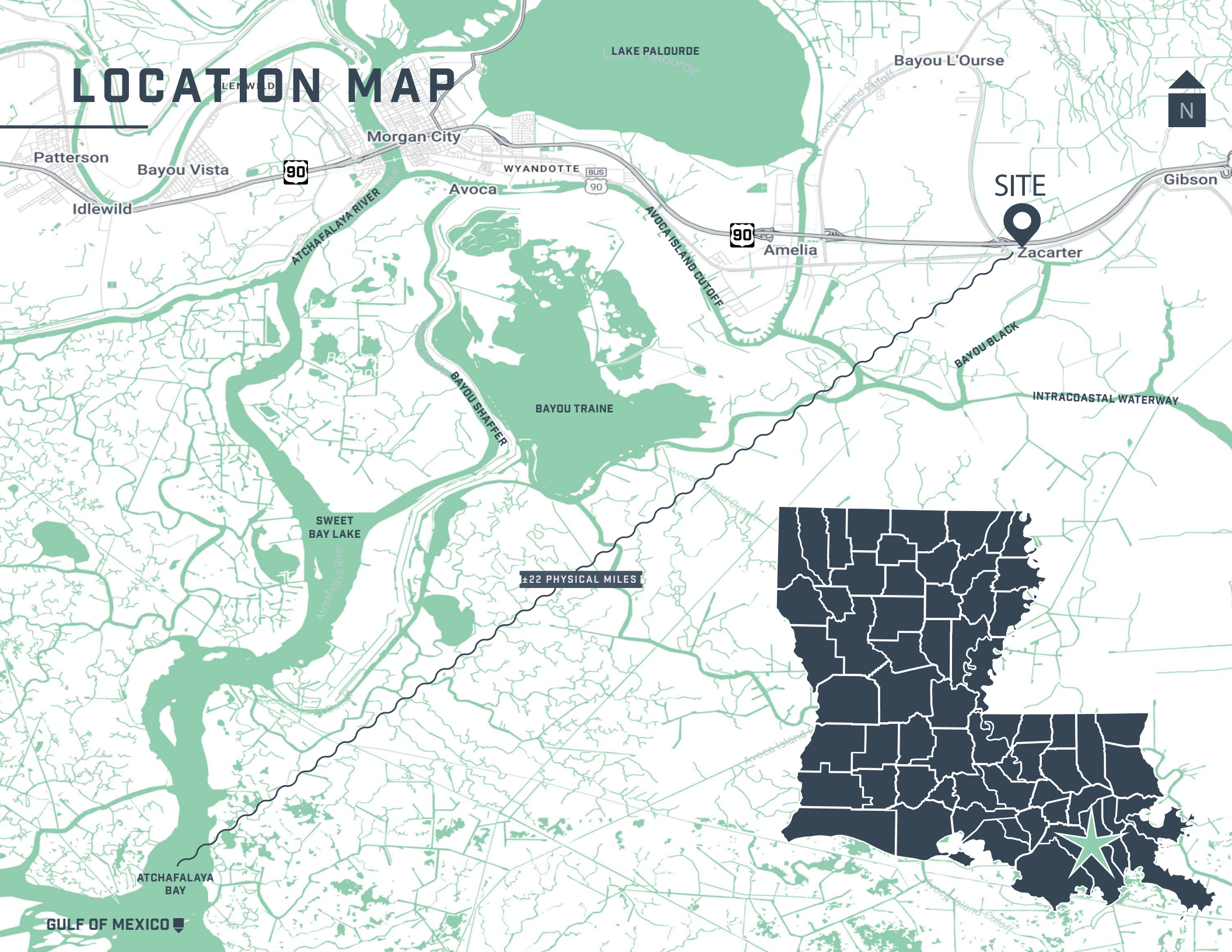
#1



This area supports tremendous activity in industrial scrap and recycle as well as offshore plug, abandon and decommission work.

BAYOU TRAIN

LOCATION MAP



GALLERY





FOR SALE/LEASE

WATCH VIDEO

**6797-
6803**

BAYOU BLACK DR.

**±56.7 ACRES
WATERFRONT INDUSTRIAL
LAND WITH BARGE ACCESS**

BRYCE FRENCH

Senior Vice President

+1 504 427 2090

bryce.french@cbre.com

JACK SIKORA

Senior Associate

+1 205 907 9658

jack.sikora@cbre.com

BILL BOYER

Senior Vice President

+1 713 881 0919

bill.boyer@cbre.com

CBRE

© 2024 CBRE, Inc. All rights reserved. This information has been obtained from sources believed reliable but has not been verified for accuracy or completeness. CBRE, Inc. makes no guarantee, representation or warranty and accepts no responsibility or liability as to the accuracy, completeness, or reliability of the information contained herein. You should conduct a careful, independent investigation of the property and verify all information. Any reliance on this information is solely at your own risk. CBRE and the CBRE logo are service marks of CBRE, Inc. All other marks displayed on this document are the property of their respective owners, and the use of such marks does not imply any affiliation with or endorsement of CBRE. Photos herein are the property of their respective owners. Use of these images without the express written consent of the owner is prohibited.