

## FOR LEASE

### BUILDING INFORMATION

- 353,000 RSF
- 24-Hour Managed Security
- Professional Building Management
- Covered and Surface Parking:  
1,200 Total Spaces
- Fitness Center
- Desi Vega's Seafood & Prime Steaks
- Sunshine Café
- Pharmacy
- Shoe Shine Service
- Postal Service
- Young's Dry Cleaning Express Lockers
- Convenient to Public Transportation

### AVAILABLE SUITES

- Suite 350 - 10,907 RSF
- Suite 401 - 5,285 RSF
- Suite 420 - 15,181 RSF
- Suite 725 - 5,175 RSF
- Suite 1526 - 3,541 RSF

### EXECUTIVE SUMMARY

This 18-story, Class A office tower represents true excellence in a working environment. Heritage Plaza offers a prime location, an outstanding management staff and incomparable amenities. The building is located strategically, just minutes from the New Orleans Central Business District, New Orleans International Airport and interstate highway systems.

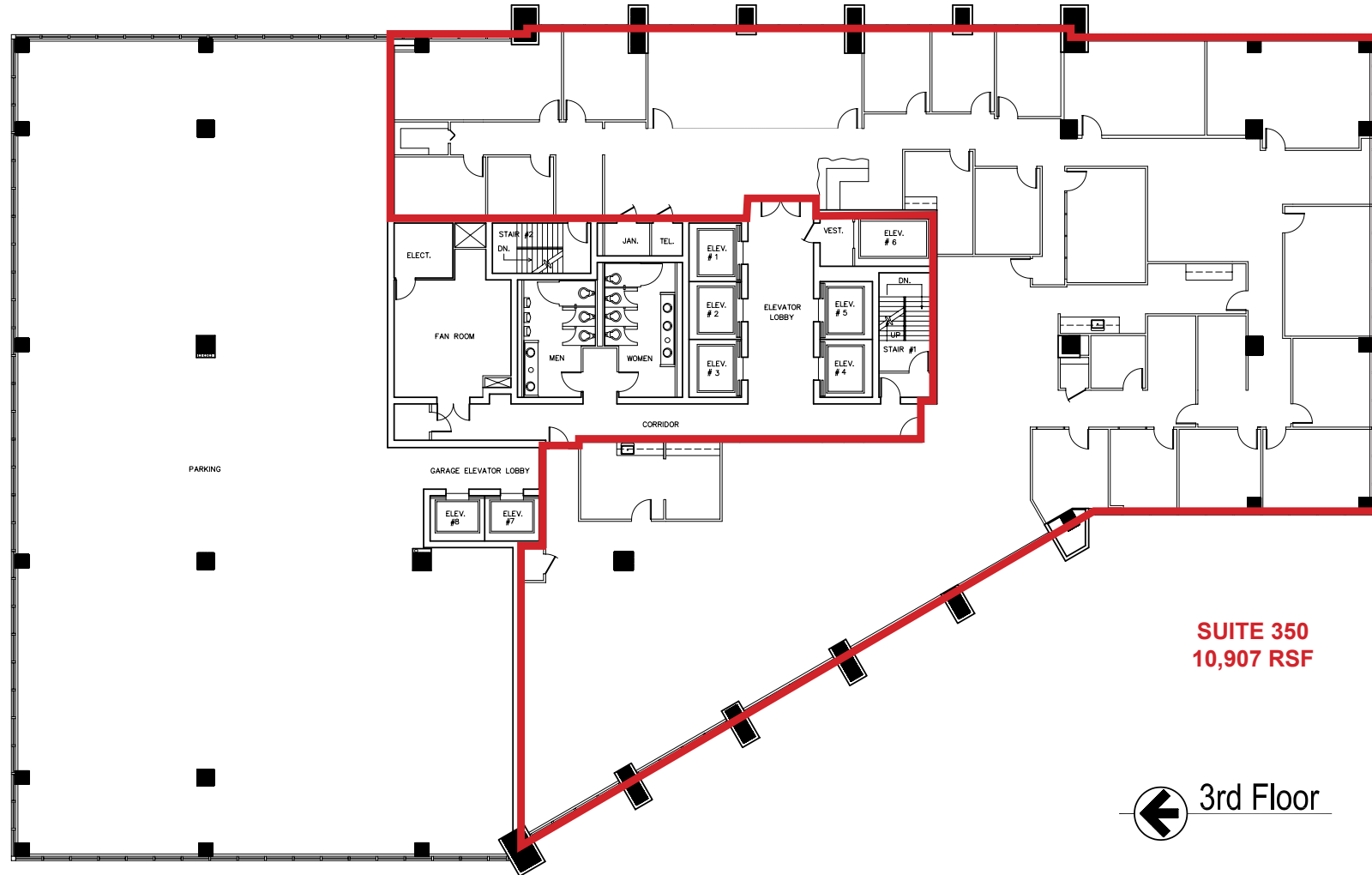
### NEARBY LANDMARKS

Orleans/Jefferson Parish Line, Winn-Dixie, Wendy's, McDonald's, Raising Cane's, Puccino's Coffee, PJ's Coffee, Dorignac's Food Center, The Fresh Market, Office Depot, Starbucks, and Trader Joe's



## 3<sup>RD</sup> FLOOR AVAILABILITY

Click image for larger view

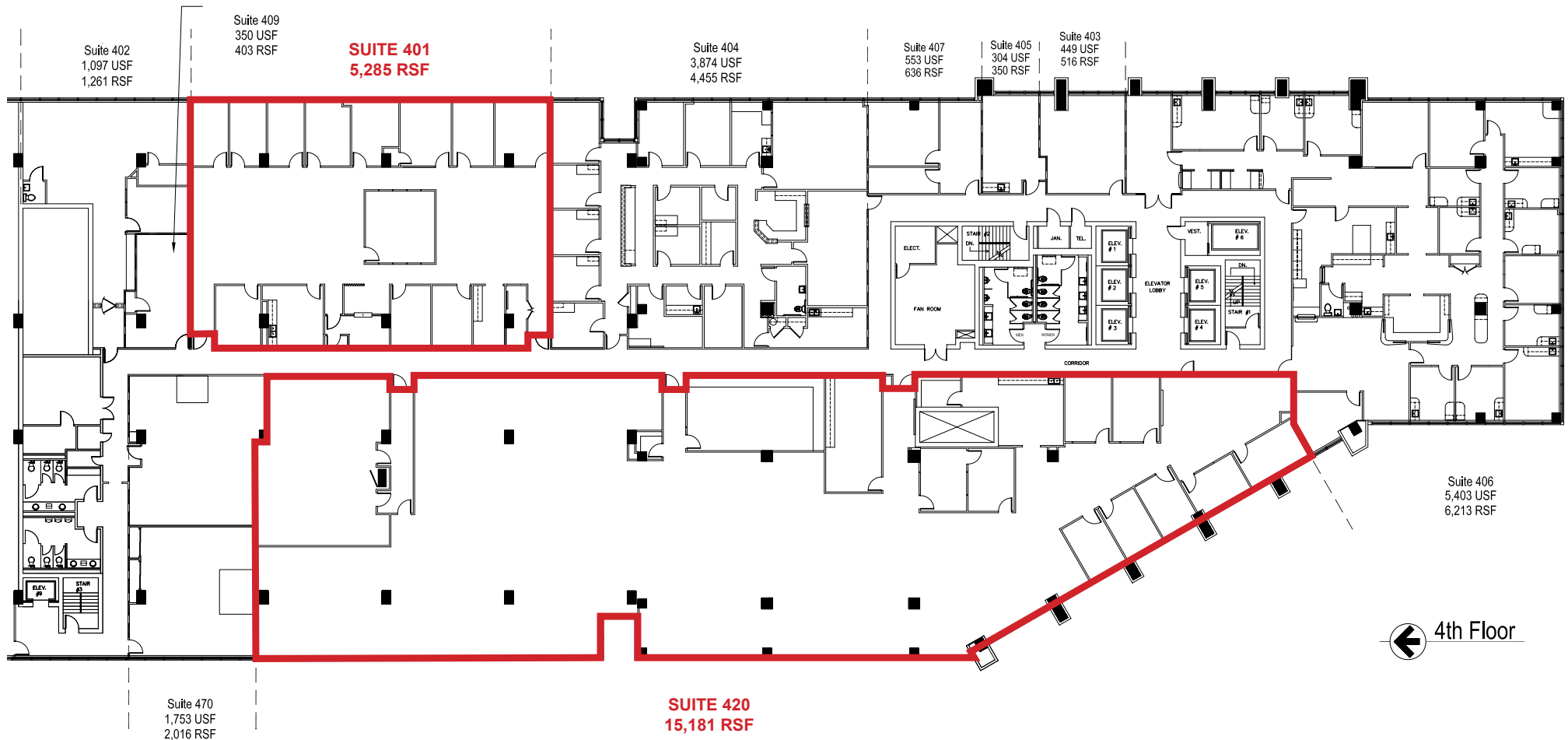


**SUITE 350**  
**10,907 RSF**

← 3rd Floor

## 4<sup>TH</sup> FLOOR AVAILABILITY

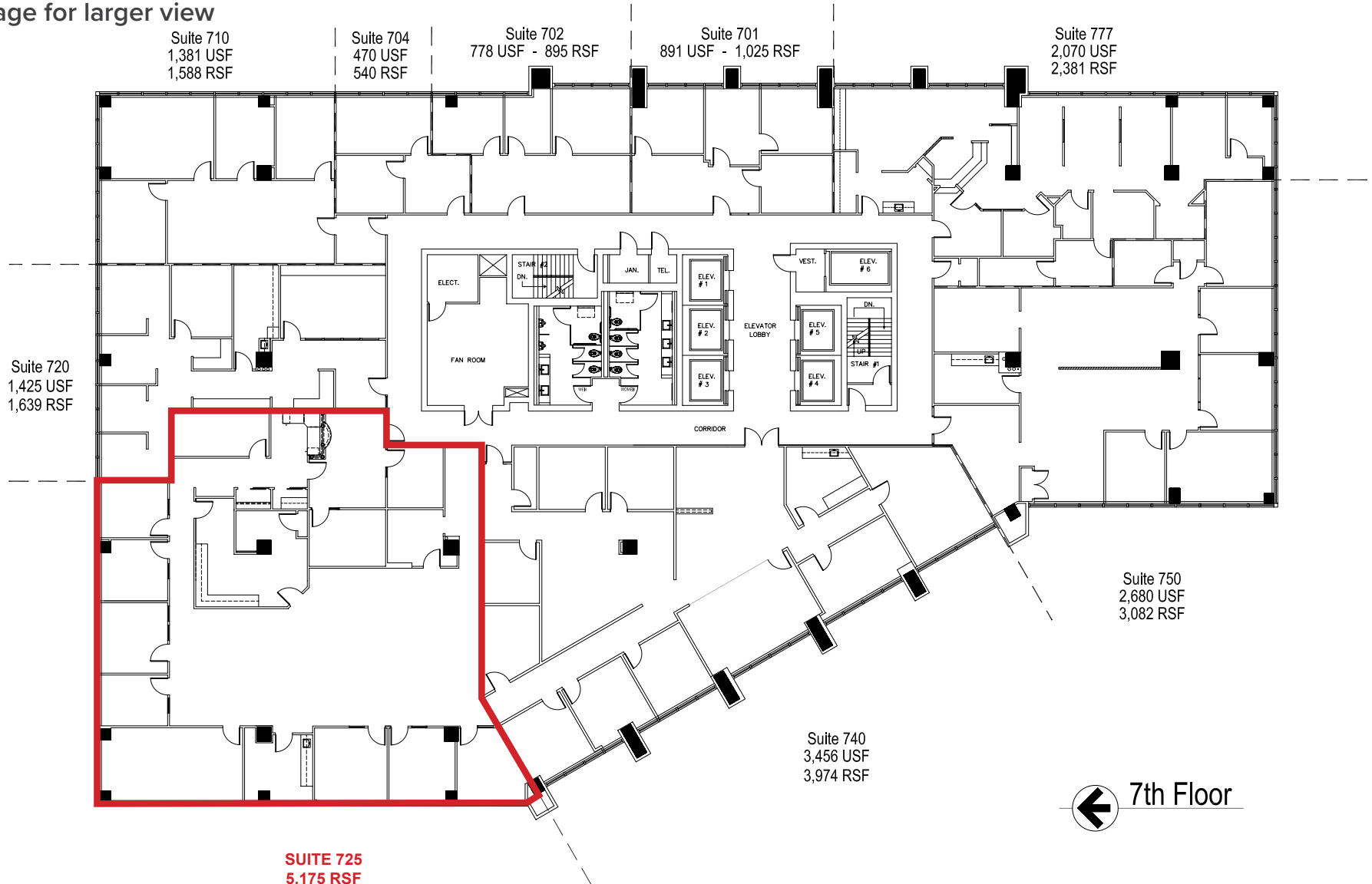
Click image for larger view



← 4th Floor

## 7<sup>TH</sup> FLOOR AVAILABILITY

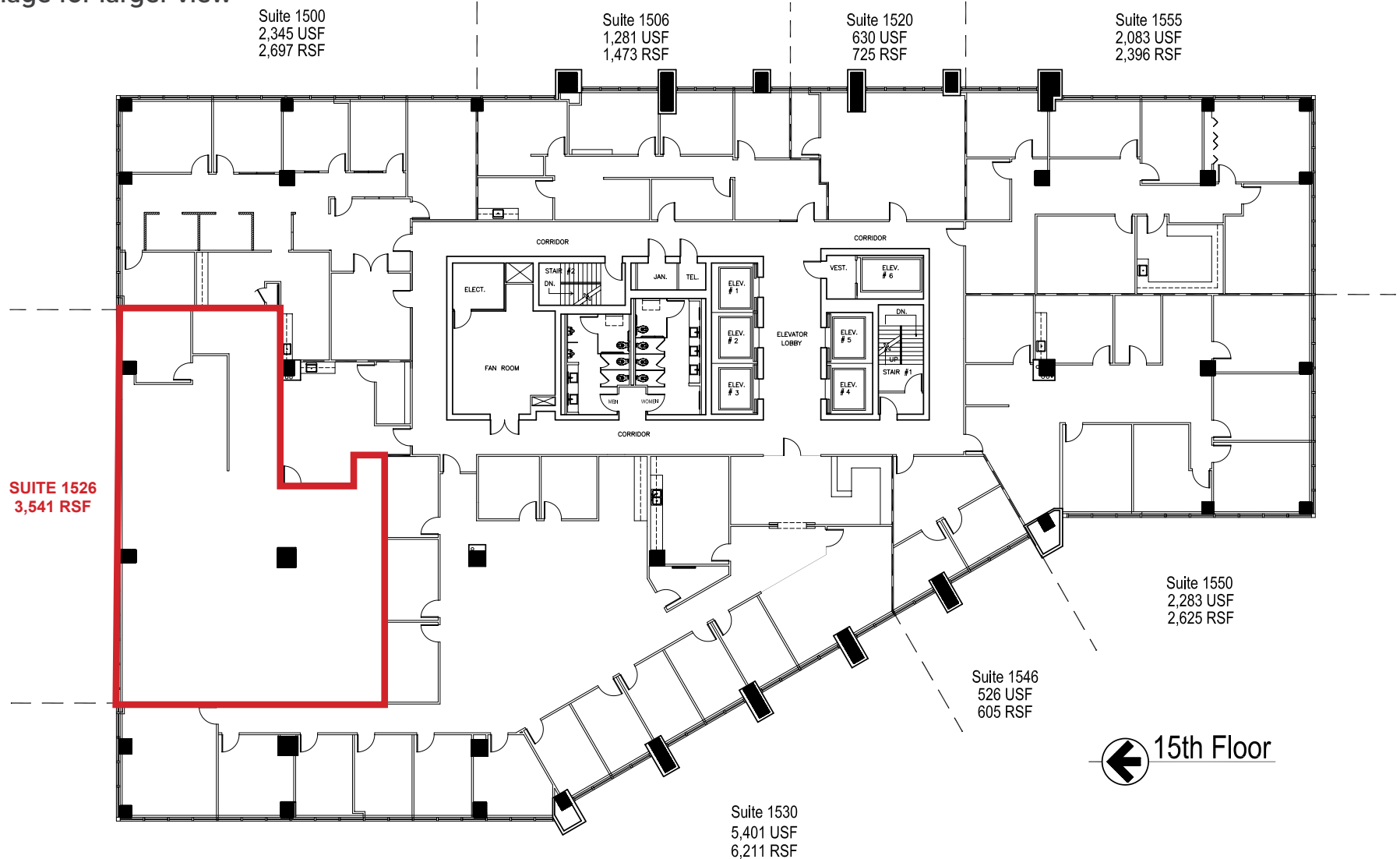
Click image for larger view



← 7th Floor

## 15<sup>TH</sup> FLOOR AVAILABILITY

Click image for larger view





# stirling

**GAINES SEAMAN**

Office: 504-523-4481

Direct: 504-332-1561

[gseaman@stirlingprop.com](mailto:gseaman@stirlingprop.com)

# HERITAGE PLAZA

111 Veterans Memorial Boulevard  
Metairie, LA



[STIRLINGPROPERTIES.COM](http://STIRLINGPROPERTIES.COM) / [f](#) [t](#) [i](#) [n](#)

The foregoing is solely for information purposes and is subject to change without notice. Stirling Properties makes no representations or warranties regarding the properties or information herein including but not limited to any and all images pertaining to these properties. It is the obligation of each purchaser/lessee to investigate the condition and attributes of the properties and to verify the accuracy of the foregoing information to the extent such purchaser/lessee deems necessary. Also subject to errors, omissions, changes in terms and conditions, prior sale, lease or withdrawal, without notice. 8/25

Member of  
**RETAIL BROKERS NETWORK**