

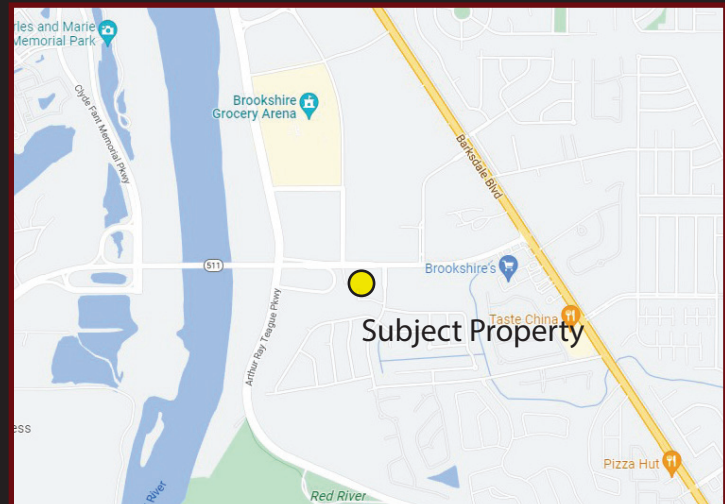


COMMERCIAL DEVELOPMENT SITE

1.01 ± ACRES FOR SALE

JIMMIE DAVIS HWY, BOSSIER CITY, LA 71112

- 1.01 +/- Acres Available
- 150 ft. of frontage and 291 ft. of depth
- Cleared, level, and drains well
- Highly visible from Jimmie Davis Highway
- Perfect for retail or office
- Traffic Count -- 31,620 CPD (Bossier City)
- \$415,530.00



2022 DEMOGRAPHICS

Radius	Population	Avg Household Income	Number of Households
1 mile	4,039	\$85,342	1,484
2 mile	37,239	\$85,348	16,156
5 mile	98,544	\$82,757	43,516

For more information, contact:

Chris Susilovich | Michael Morrison

318.222.2244 | csusilovich@vintagerealty.com | mmorrison@vintagerealty.com

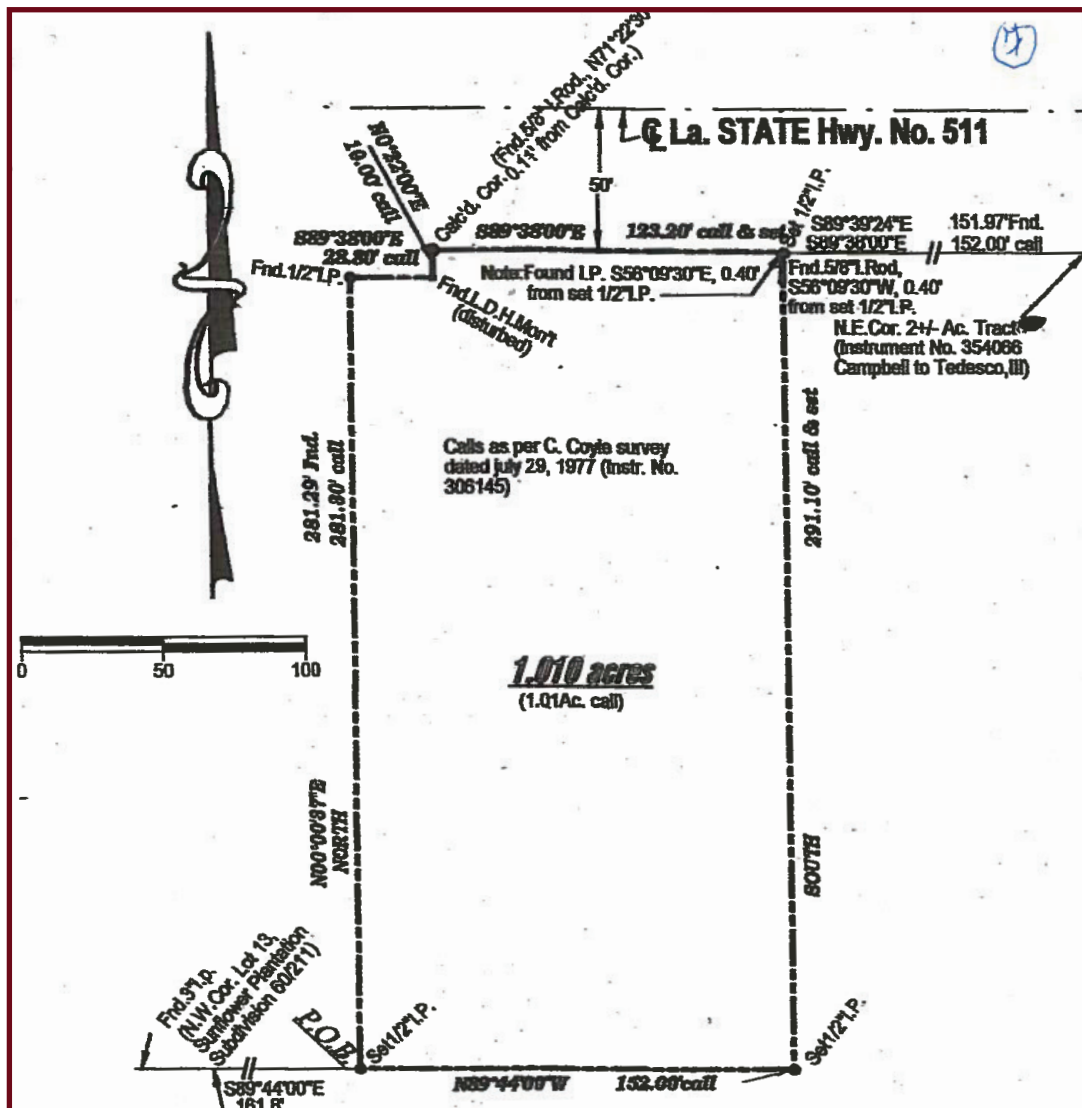
ALL INFORMATION CONTAINED HEREIN IS BELIEVED TO BE ACCURATE, BUT IS NOT WARRANTED AND NO LIABILITY OF ERRORS OR OMISSIONS IS ASSURED BY EITHER THE PROPERTY OWNER OR VINTAGE REALTY COMPANY OR ITS AGENTS AND EMPLOYEES. PRICES AS STATED HEREIN AND PRODUCT AVAILABILITY IS SUBJECT TO CHANGE AND/OR SALE OR LEASE WITHOUT PRIOR NOTICE, AND ALL SIZES AND DIMENSIONS ARE SUBJECT TO CORRECTION. REV 8/2022



LAND FOR SALE

JIMMIE DAVIS HWY
BOSSIER CITY, LA 71112

Land Survey



For information, please contact:

Chris Susilovich | Michael Morrison
318.222.2244 | csusilovich@vintagerealty.com | mmorrison@vintagerealty.com

ALL INFORMATION CONTAINED HEREIN IS BELIEVED TO BE ACCURATE, BUT IS NOT WARRANTED AND NO LIABILITY OF ERRORS OR OMISSIONS IS ASSURED BY EITHER THE PROPERTY OWNER OR VINTAGE REALTY COMPANY OR ITS AGENTS AND EMPLOYEES. PRICES AS STATED HEREIN AND PRODUCT AVAILABILITY IS SUBJECT TO CHANGE AND/OR SALE OR LEASE WITHOUT PRIOR NOTICE, AND ALL SIZES AND DIMENSIONS ARE SUBJECT TO CORRECTION. REV 8/2022

LAND FOR SALE

JIMMIE DAVIS HWY
BOSSIER CITY, LA 71112



For information, please contact:

Chris Susilovich | Michael Morrison
318.222.2244 | csusilovich@vintagerealty.com | mmorrison@vintagerealty.com

ALL INFORMATION CONTAINED HEREIN IS BELIEVED TO BE ACCURATE, BUT IS NOT WARRANTED AND NO LIABILITY OF ERRORS OR OMISSIONS IS ASSURED BY EITHER THE PROPERTY OWNER OR VINTAGE REALTY COMPANY OR ITS AGENTS AND EMPLOYEES. PRICES AS STATED HEREIN AND PRODUCT AVAILABILITY IS SUBJECT TO CHANGE AND/OR SALE OR LEASE WITHOUT PRIOR NOTICE, AND ALL SIZES AND DIMENSIONS ARE SUBJECT TO CORRECTION. REV 8/2022