



# 229 Distribution Drive

Lafayette, LA 70507

**INDUSTRIAL PROPERTY  
FOR SALE**

Prepared By:

**Dewitt "Zeen" David**

Broker Associate

O: 337.233.9541 | C: 337.298.6169

[dewittdavid@rampartcre.com](mailto:dewittdavid@rampartcre.com)





### PROPERTY HIGHLIGHTS

- Building 1: **MAIN BLDG.** 13,660 sf includes 2,000 sf office, 11,440 sf fully-insulated warehouse with 20' eaves, and 160 sf rear, covered slab. Two 16w x 14h overhead doors. +/- 720 linear feet of 3 & 5 shelf racks to remain.
- Building 2: **MAINTENACE SHOP.** 5,000 sf includes 550 s office + 4,450 sf fully-insulated shop with 16' eave. Four 12w x 14h rollup doors.
- Building 3: **CONFERENCE CENTER.** 2,180 sf metal building including lobby, large conference room able to be divided in half with pullout divider panels.
- **Site Size:** 1.432 acres
- **Zoning:** Industrial Light
- **Utilities:** Public

### PROPERTY DESCRIPTION

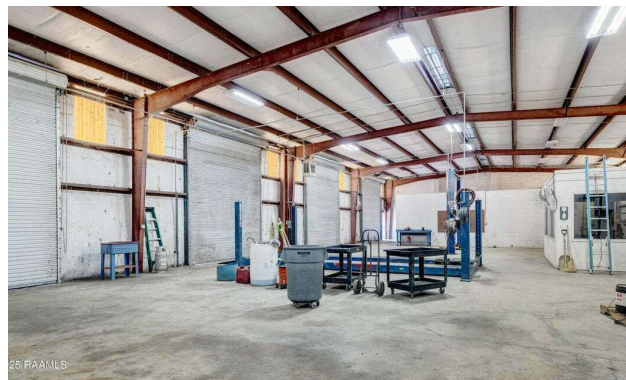
Former distribution center located in Lafayette Economic Development Authority's Interstate Industrial Park. Access to I-49 and I-10. Three metal buildings totaling +/- 20,780 sf located on 1.432 acres. Majority of site is concreted and fenced.

### OFFERING SUMMARY

Sale Price:	\$925,000
Building Size (3):	+/-20,780 SF
Price Per SF:	\$44.56

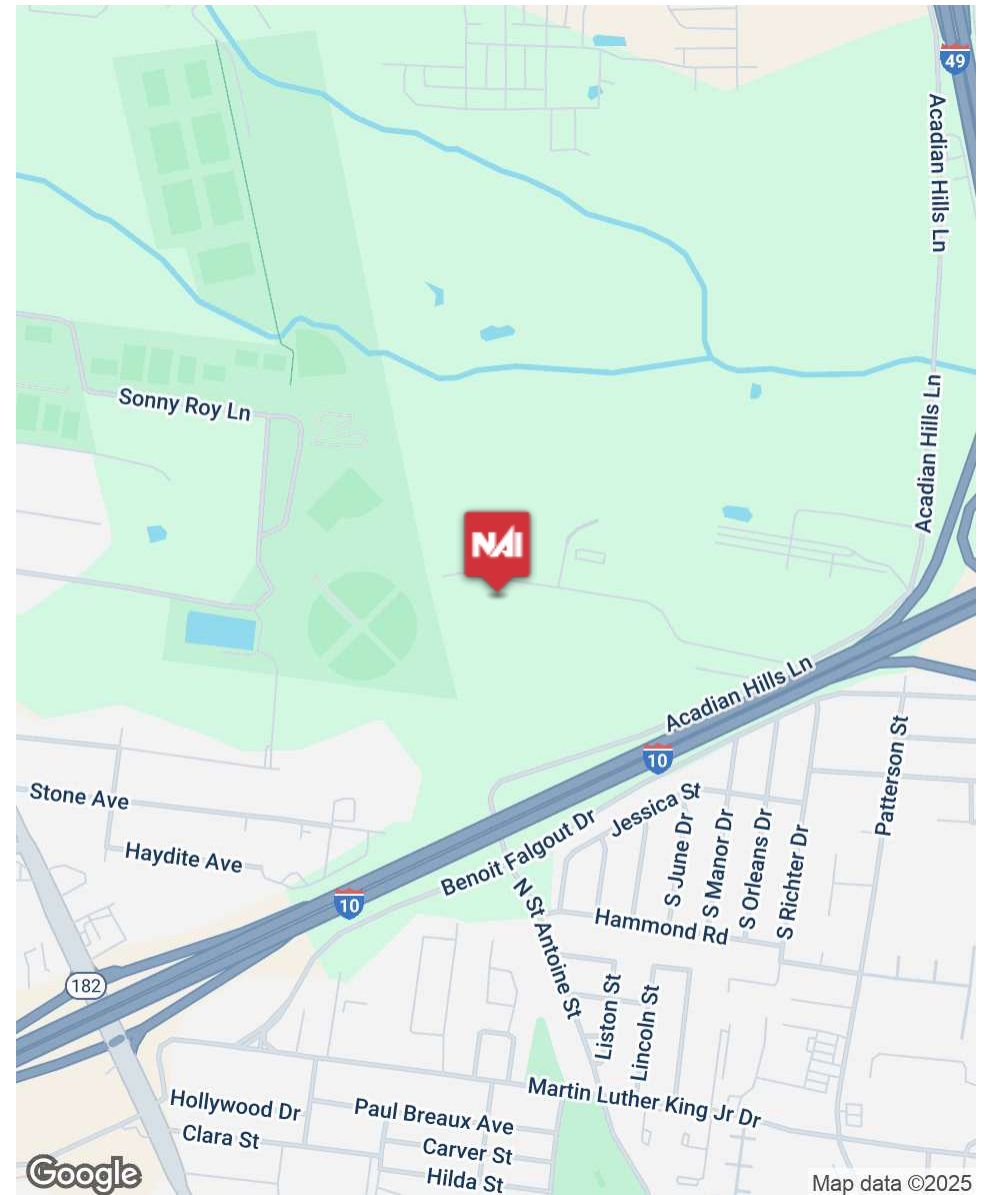
INFORMATION SUBJECT TO VERIFICATION & NO LIABILITY FOR ERRORS & OMISSION ASSUMED. // LICENSED IN LOUISIANA





INFORMATION SUBJECT TO VERIFICATION & NO LIABILITY FOR ERRORS & OMISSION ASSUMED. // LICENSED IN LOUISIANA





INFORMATION SUBJECT TO VERIFICATION & NO LIABILITY FOR ERRORS & OMISSION ASSUMED. // LICENSED IN LOUISIANA





For More Information:

**Dewitt "Zeen" David**

Broker Associate

337.298.6169

[dewittdavid@rampartcre.com](mailto:dewittdavid@rampartcre.com)

**NARampart**

400 East Kaliste Saloom Rd., Ste 8100  
Lafayette, LA 70508

[www.rampartcre.com](http://www.rampartcre.com)