

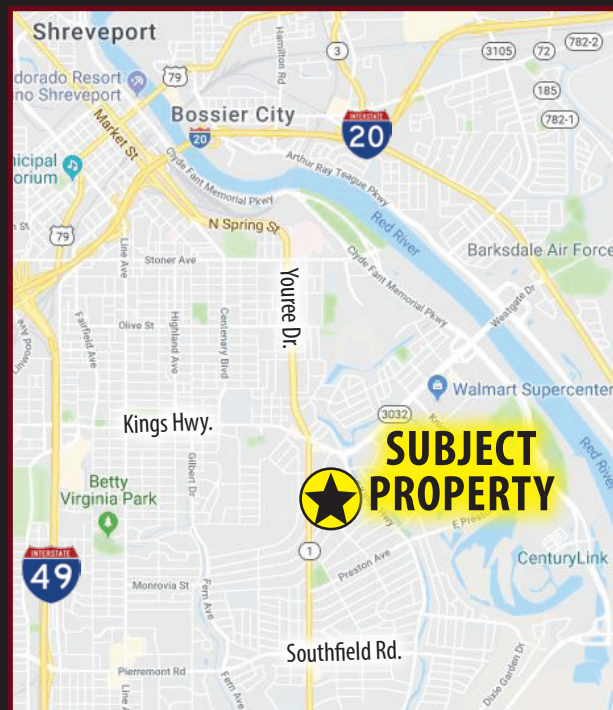


YOUREE DRIVE OFFICE BUILDING

4300 YOUREE DRIVE, SHREVEPORT, LA 71105

AVAILABLE FOR SALE

- Premier Location on Youree Drive
- Two Story - 9,134 Square Foot Office Building
 - 5,759 Square Feet Ground Floor
 - 3,375 Square Feet Second Floor
- Site Offers Excellent Visibility and Ease of Access
- Recently Updated Interiors - Versatile Layout
- Building One, is part of the 4300 Commercial Subdivision, which also contains Building 2 and 3. All Parking and Common Areas are Shared with Buildings 2 and 3.
- Lot 1 - 0.133 Acres
- Zoning - C-UC Urban Corridor Commercial District



For more information, contact:

Michele Sauls, Associate Broker | 318-222-2244

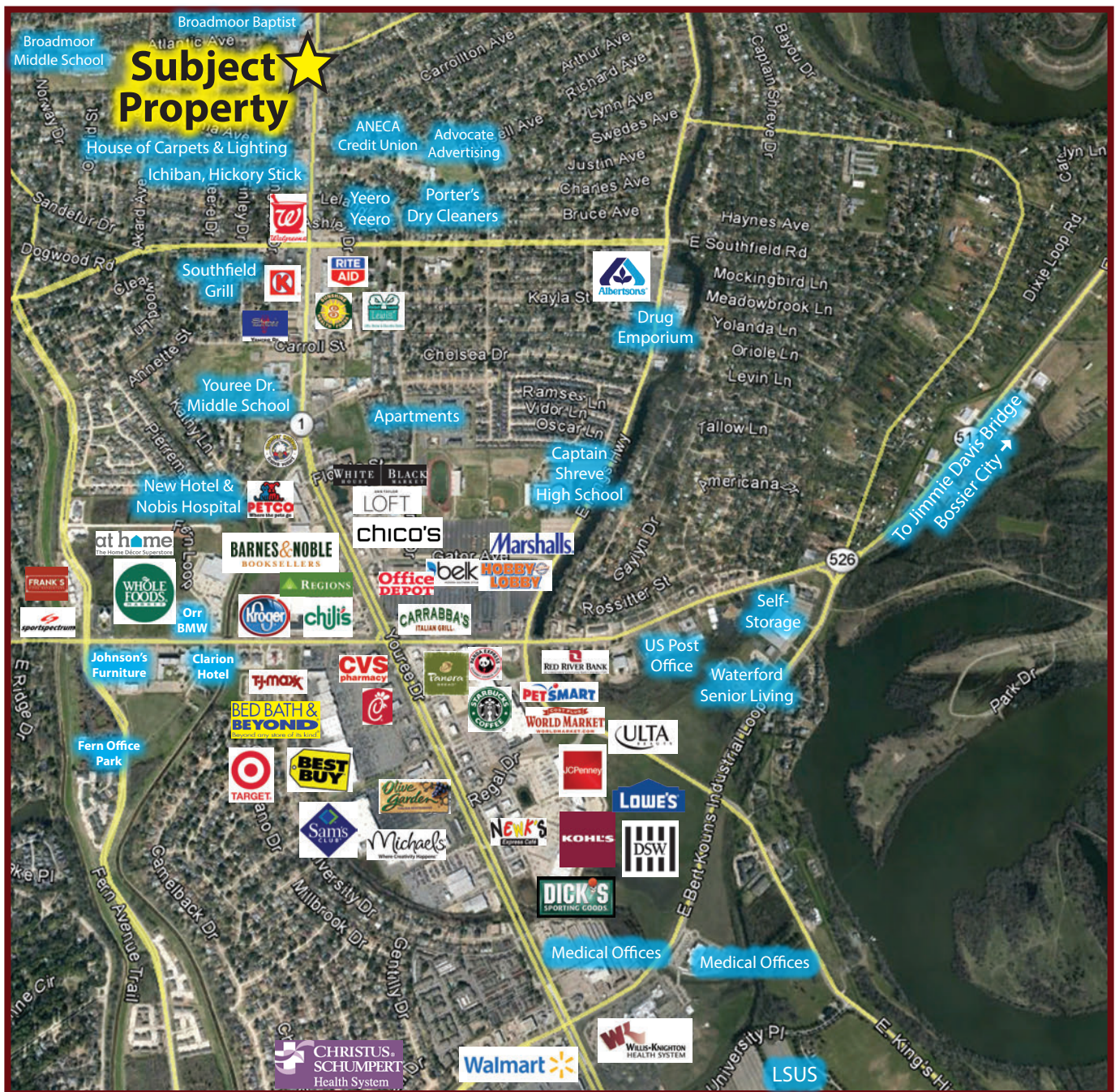
msauls@vintagerealty.com | vintagerealty.com

ALL INFORMATION CONTAINED HEREIN IS BELIEVED TO BE ACCURATE, BUT IS NOT WARRANTED AND NO LIABILITY OF ERRORS OR OMISSIONS IS ASSURED BY EITHER THE PROPERTY OWNER OR VINTAGE REALTY COMPANY OR ITS AGENTS AND EMPLOYEES. PRICES AS STATED HEREIN AND PRODUCT AVAILABILITY IS SUBJECT TO CHANGE AND/OR SALE OR LEASE WITHOUT PRIOR NOTICE, AND ALL SIZES AND DIMENSIONS ARE SUBJECT TO CORRECTION. REV 12/2020



YOUREE DR. OFFICE BUILDING FOR SALE

4300 YOUREE DRIVE
SHREVEPORT, LA 71105



For information, please contact:

Michele Sauls, Associate Broker | 318-222-2244

msauls@vintagerealty.com | vintagerealty.com

ALL INFORMATION CONTAINED HEREIN IS BELIEVED TO BE ACCURATE, BUT IS NOT WARRANTED AND NO LIABILITY OF ERRORS OR OMISSIONS IS ASSURED BY EITHER THE PROPERTY OWNER OR VINTAGE REALTY COMPANY OR ITS AGENTS AND EMPLOYEES. PRICES AS STATED HEREIN AND PRODUCT AVAILABILITY IS SUBJECT TO CHANGE AND/OR SALE OR LEASE WITHOUT PRIOR NOTICE, AND ALL SIZES AND DIMENSIONS ARE SUBJECT TO CORRECTION. 12/2020

YOUREE DR. OFFICE BUILDING FOR SALE

4300 YOUREE DRIVE
SHREVEPORT, LA 71105



For information, please contact:

Michele Sauls, Associate Broker | 318-222-2244

msauls@vintagerealty.com | vintagerealty.com

ALL INFORMATION CONTAINED HEREIN IS BELIEVED TO BE ACCURATE, BUT IS NOT WARRANTED AND NO LIABILITY OF ERRORS OR OMISSIONS IS ASSURED BY EITHER THE PROPERTY OWNER OR VINTAGE REALTY COMPANY OR ITS AGENTS AND EMPLOYEES. PRICES AS STATED HEREIN AND PRODUCT AVAILABILITY IS SUBJECT TO CHANGE AND/OR SALE OR LEASE WITHOUT PRIOR NOTICE, AND ALL SIZES AND DIMENSIONS ARE SUBJECT TO CORRECTION. 12/2020

YOUREE DR. OFFICE BUILDING FOR SALE

4300 YOUREE DRIVE
SHREVEPORT, LA 71105



For information, please contact:

Michele Sauls, Associate Broker | 318-222-2244

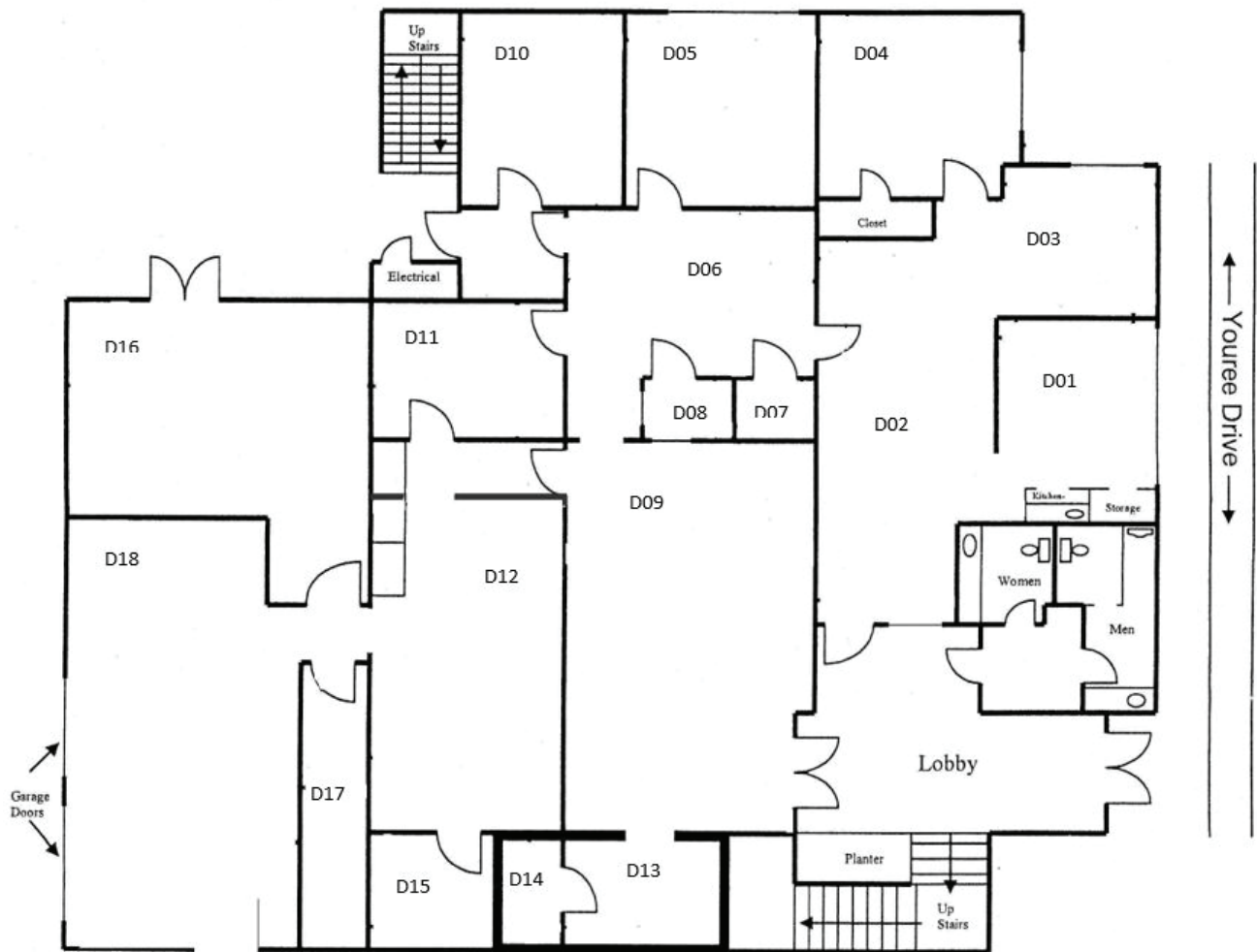
msauls@vintagerealty.com | vintagerealty.com

ALL INFORMATION CONTAINED HEREIN IS BELIEVED TO BE ACCURATE, BUT IS NOT WARRANTED AND NO LIABILITY OF ERRORS OR OMISSIONS IS ASSURED BY EITHER THE PROPERTY OWNER OR VINTAGE REALTY COMPANY OR ITS AGENTS AND EMPLOYEES. PRICES AS STATED HEREIN AND PRODUCT AVAILABILITY IS SUBJECT TO CHANGE AND/OR SALE OR LEASE WITHOUT PRIOR NOTICE, AND ALL SIZES AND DIMENSIONS ARE SUBJECT TO CORRECTION. 12/2020

YOUREE DR. OFFICE BUILDING FOR SALE

4300 YOUREE DRIVE
SHREVEPORT, LA 71105

FIRST FLOOR - 5,759 square feet



For information, please contact:

Michele Sauls, Associate Broker | 318-222-2244

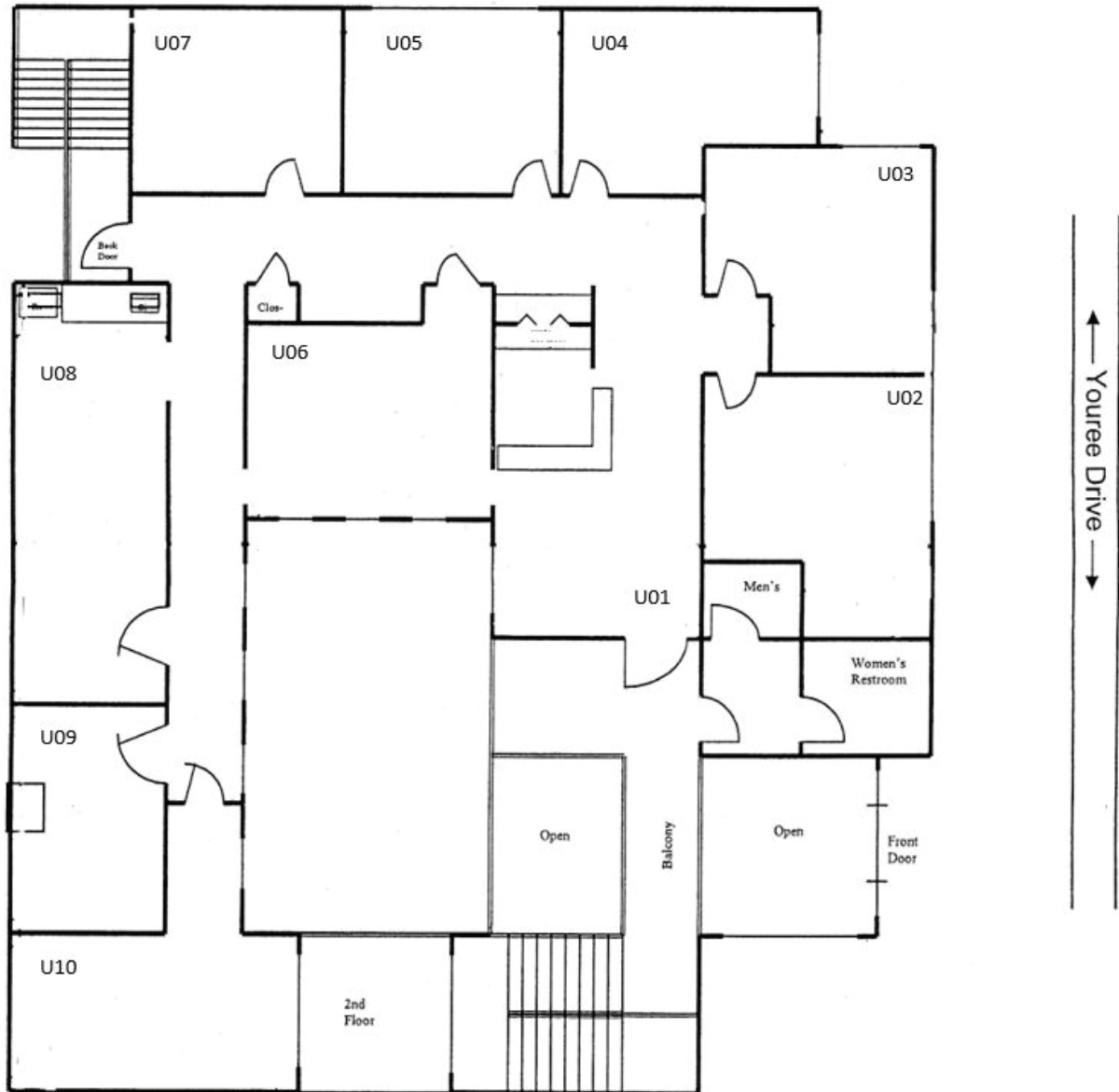
msauls@vintagerealty.com | vintagerealty.com

ALL INFORMATION CONTAINED HEREIN IS BELIEVED TO BE ACCURATE, BUT IS NOT WARRANTED AND NO LIABILITY OF ERRORS OR OMISSIONS IS ASSURED BY EITHER THE PROPERTY OWNER OR VINTAGE REALTY COMPANY OR ITS AGENTS AND EMPLOYEES. PRICES AS STATED HEREIN AND PRODUCT AVAILABILITY IS SUBJECT TO CHANGE AND/OR SALE OR LEASE WITHOUT PRIOR NOTICE, AND ALL SIZES AND DIMENSIONS ARE SUBJECT TO CORRECTION. 12/2020

YOUREE DR. OFFICE BUILDING FOR SALE

4300 YOUREE DRIVE
SHREVEPORT, LA 71105

SECOND FLOOR - 3,375 square feet



For information, please contact:

Michele Sauls, Associate Broker | 318-222-2244

msauls@vintagerealty.com | vintagerealty.com

ALL INFORMATION CONTAINED HEREIN IS BELIEVED TO BE ACCURATE, BUT IS NOT WARRANTED AND NO LIABILITY OF ERRORS OR OMISSIONS IS ASSURED BY EITHER THE PROPERTY OWNER OR VINTAGE REALTY COMPANY OR ITS AGENTS AND EMPLOYEES. PRICES AS STATED HEREIN AND PRODUCT AVAILABILITY IS SUBJECT TO CHANGE AND/OR SALE OR LEASE WITHOUT PRIOR NOTICE, AND ALL SIZES AND DIMENSIONS ARE SUBJECT TO CORRECTION. 12/2020