

Available For Lease
COMMERCIAL SPACE
±1,777 SF Available



1450 William Street, FL 1

Lake Charles LA 70601

Property Highlights

- Commercial space available in Walnut Grove -- Southwest Louisiana's premier Traditional Neighborhood Development (TND)
- Walnut Grove is located off of West Sallier Street, just minutes from Downtown Lake Charles
- ±1,777 SF available on the 1st floor of The Lawton Building
- Near popular dining establishments : Calla Restaurant and The Bakery

Lease rate is \$28 /SF

**CALL OR EMAIL FOR MORE
INFORMATION**



For more information

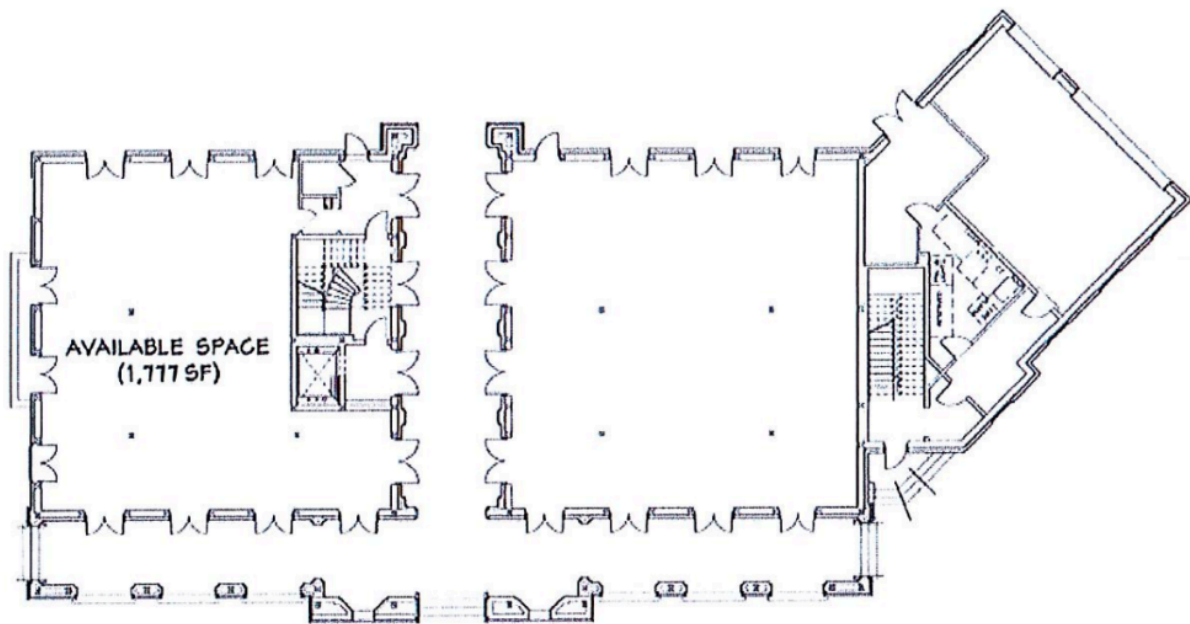
Matt Redd, CCIM, SIOR, CRE

O: 337 310 0605 C: 337 489 9666

mattredd@reddproperties.com

NO WARRANTY OR REPRESENTATION, EXPRESS OR IMPLIED, IS MADE AS TO THE ACCURACY OF THE INFORMATION CONTAINED HEREIN, AND THE SAME IS SUBMITTED SUBJECT TO ERRORS, OMISSIONS, CHANGE OF PRICE, RENTAL OR OTHER CONDITIONS, PRIOR SALE, LEASE OR FINANCING, OR WITHDRAWAL WITHOUT NOTICE, AND OF ANY SPECIAL LISTING CONDITIONS IMPOSED BY OUR PRINCIPALS NO WARRANTIES OR REPRESENTATIONS ARE MADE AS TO THE CONDITION OF THE PROPERTY OR ANY HAZARDS CONTAINED THEREIN ARE ANY TO BE IMPLIED. LICENSED IN LOUISIANA.

1424 Ryan Street
Lake Charles, LA 70601
337 310 0605
reddproperties.com



1 1450 WILLIAM STREET
Lawton Building - First Floor

