

PAGE 59

WEAT SUB. PAGE 17

Yellow Jacket Timberland LLC 10 AC.

QUINCY T. FORD EST. 15.77 AC.±

QUINCY T. FORD EST. 46.63 AC.

QUINCY T. FORD EST. 25 AC.±

James Cox Sr 5.74 Ac. (Eldo 5-20-36035-1)

COX SR 7.4 AC.

KERLIN PARK SEER PAGE 36

SEC. 20.15N-R1E

U.S.

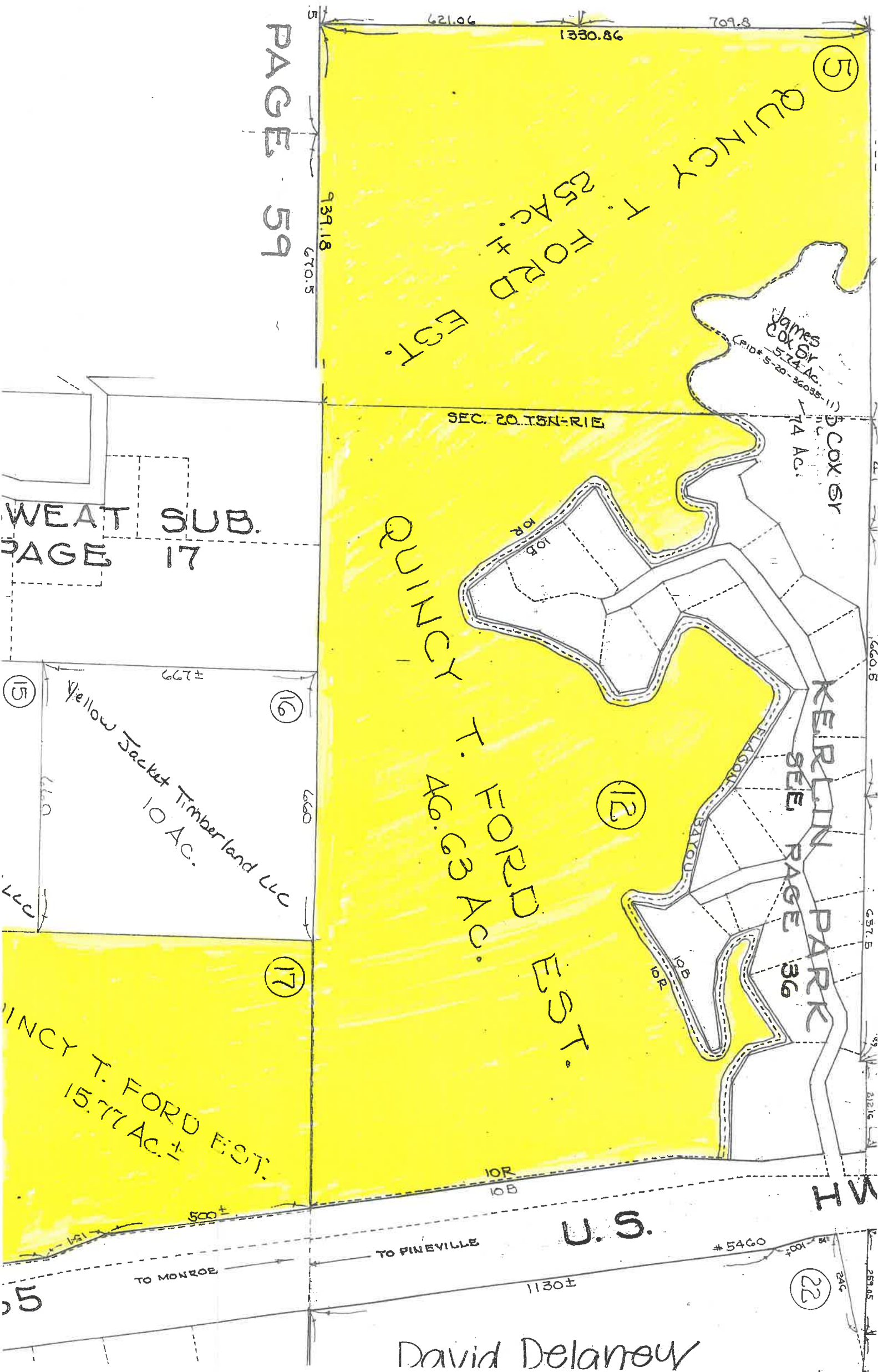
TO MONROE

TO PINEVILLE

1130±

#5460

David Delaney



SEE

PAGE

35

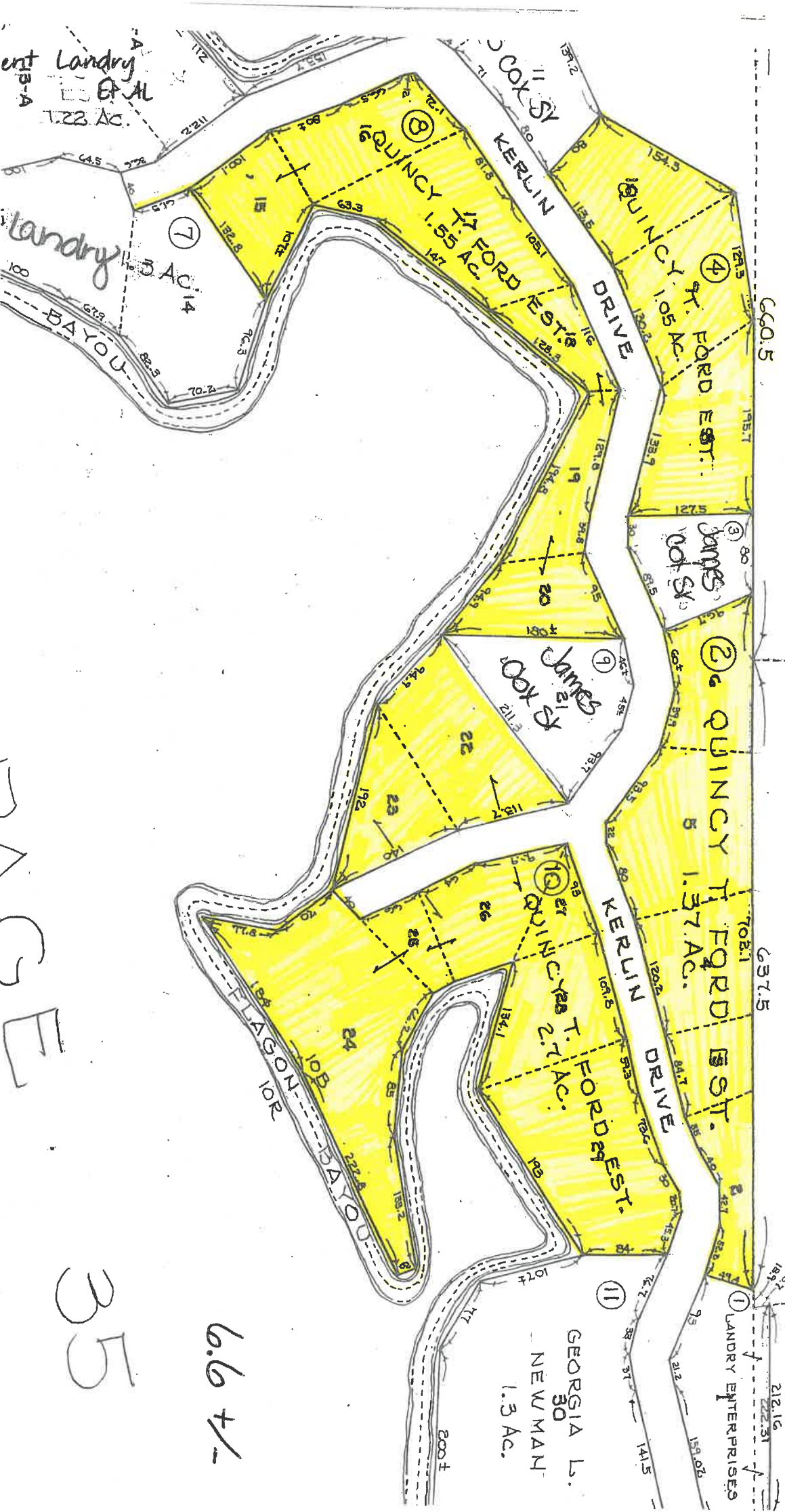
ent Landry
EPAL
1.22 AC.

Landry
3 AC.
7

MANAGE

35

6.6 +/-



GEORGIA L.
30
NEWMAN
1.3 AC.

LANDRY ENTERPRISES

QUINCY T. FORD EST.
1.37 AC.

QUINCY T. FORD EST.
1.05 AC.

QUINCY T. FORD EST.
2.7 AC.

JAMES COOK ST.

QUINCY T. FORD EST.
1.55 AC.

QUINCY T. FORD EST.
1.55 AC.

ent Landry
EPAL
1.22 AC.

Landry
3 AC.
7

MANAGE

35

6.6 +/-

Rapides Parish

Assessor's Office

Rapides, Assessor



Date Created: 10/10/2025

Created By: anonymous

1 inch = 312 feet

This map should be used for reference purposes only and should not be considered a legal document. While every effort has been made to ensure the accuracy of this product, the publisher accepts no responsibility for any errors or omissions nor for any loss or damage alleged to be suffered by anyone as a result of the publication of this map and the notations on it, or as a result of the use or misuse of the information provided herein.

Powered By
actDataScout

www.actDataScout.com

via DataScout OneMap®