

Offering Summary

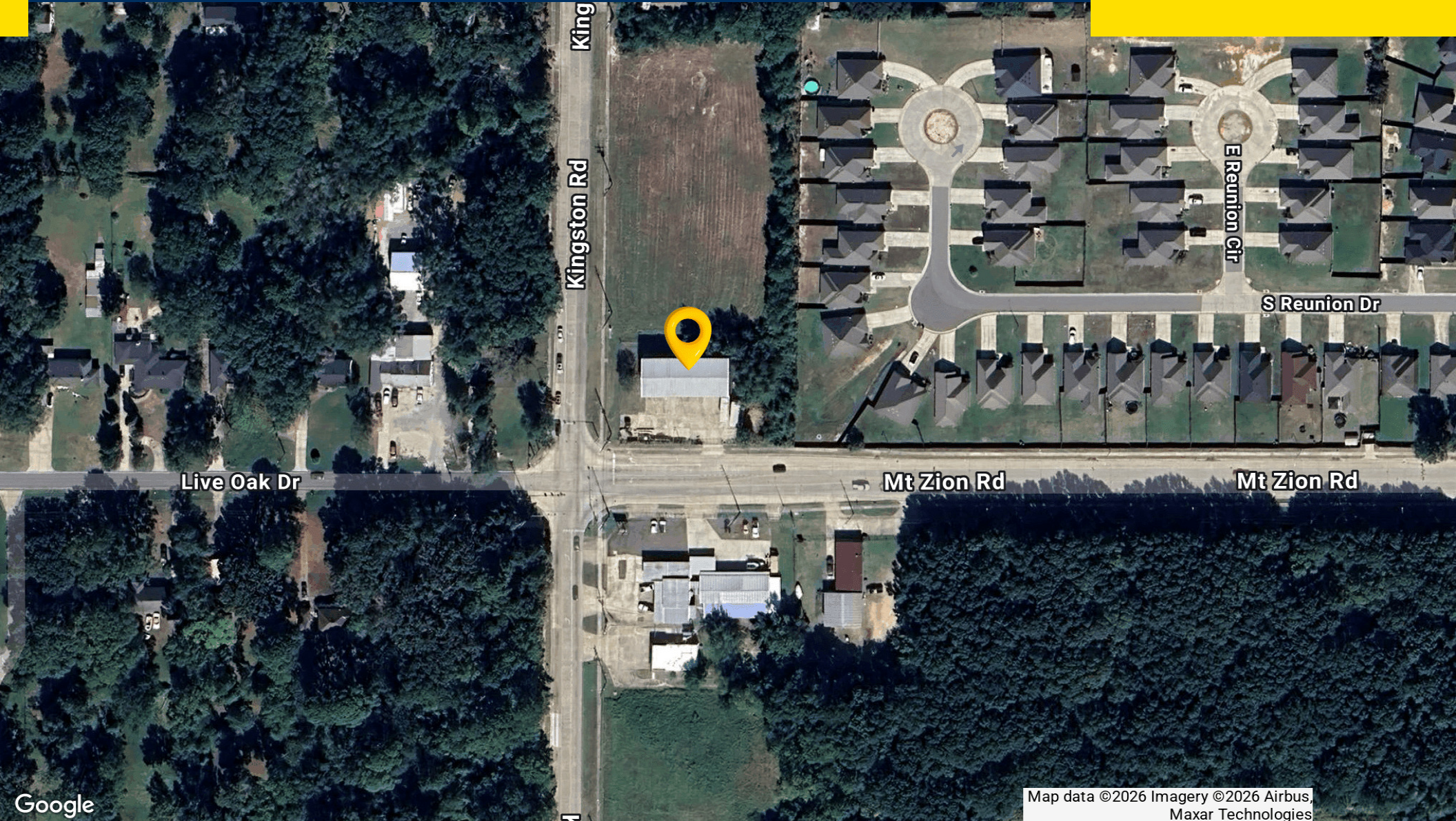
Sale Price:	\$450,000
Building Size:	4,400 SF
Price / SF:	\$102.27

Property Overview

Light industrial/commercial building located on the northeast corner of Kingston Road @ Mt. Zion Road, approximately 1.5 miles west of I-49. Easy access and great visibility. The building is 100' wide x 44' depth. There is a 1,760 square feet of shop on the east end, 880 square feet of office in the middle and another 1,760 square feet of shop on the west end. The two shop bays have two (2) 14.5' high x 12' wide truck doors. The sidewall height in both is 24' with a center height of 25'8".

Very good condition. Concrete parking in front of building. Site is totally fenced.





Map data ©2026 Imagery ©2026 Airbus,
Maxar Technologies

Sealy Real Estate Services
333 Texas Street, Suite 1050
Shreveport, LA 71101
318.222.8700
www.sealynet.com

Melissa Riddick, SIOR
Direct 318.698.1110
Mobile 318.218.4987
MelissaR@Sealynet.com

Roland Ricou
Direct 318.698.1109
Mobile 318.773.3357
RolandR@Sealynet.com

All information set forth in this brochure has been obtained from the owner, personal observation, or other reliable sources. Sealy Real Estate Services, LLC does not guarantee the accuracy of this information and makes no representations or warranties, expressed or implied, in this brochure. Information contained herein is subject to change without notice.