



OFFICE COMPLEX FOR LEASE

200 Galbert Rd
Lafayette, LA 70506

Presented By:

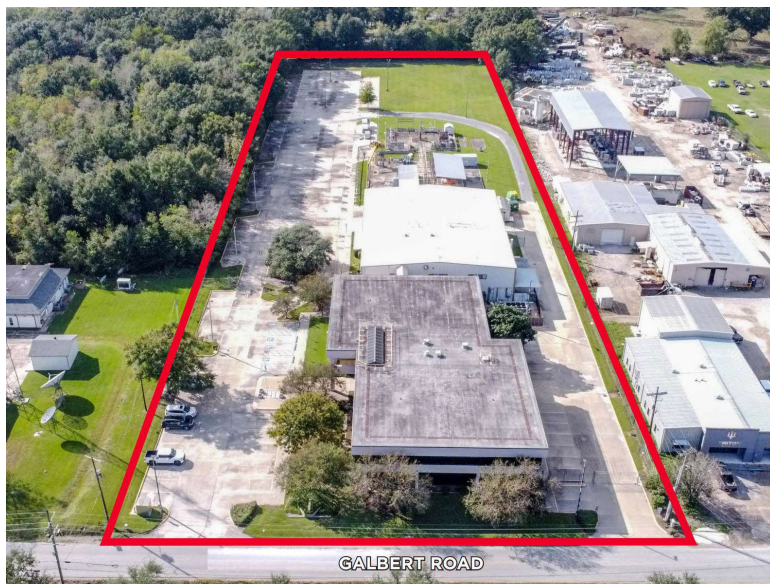
Dex Shill

Commercial Sales & Leasing

225.284.9092

dexshill@rampartcre.com

GALBERT ROAD



PROPERTY DESCRIPTION

200 Galbert Road offers a unique opportunity to lease a fully equipped office and training campus. The property features multiple office areas, training and conference rooms, a recreation lounge, a medical station, a full commercial kitchen, dormitory accommodations, and warehouse space. Additional land provides room for future expansion.

Set on 4.71 acres with professional landscaping, the site includes two buildings and ample parking with 134 spaces, including 10 jumbo truck stalls. Its central location provides convenient access to major freeways, shopping, and nearby services.

PROPERTY HIGHLIGHTS

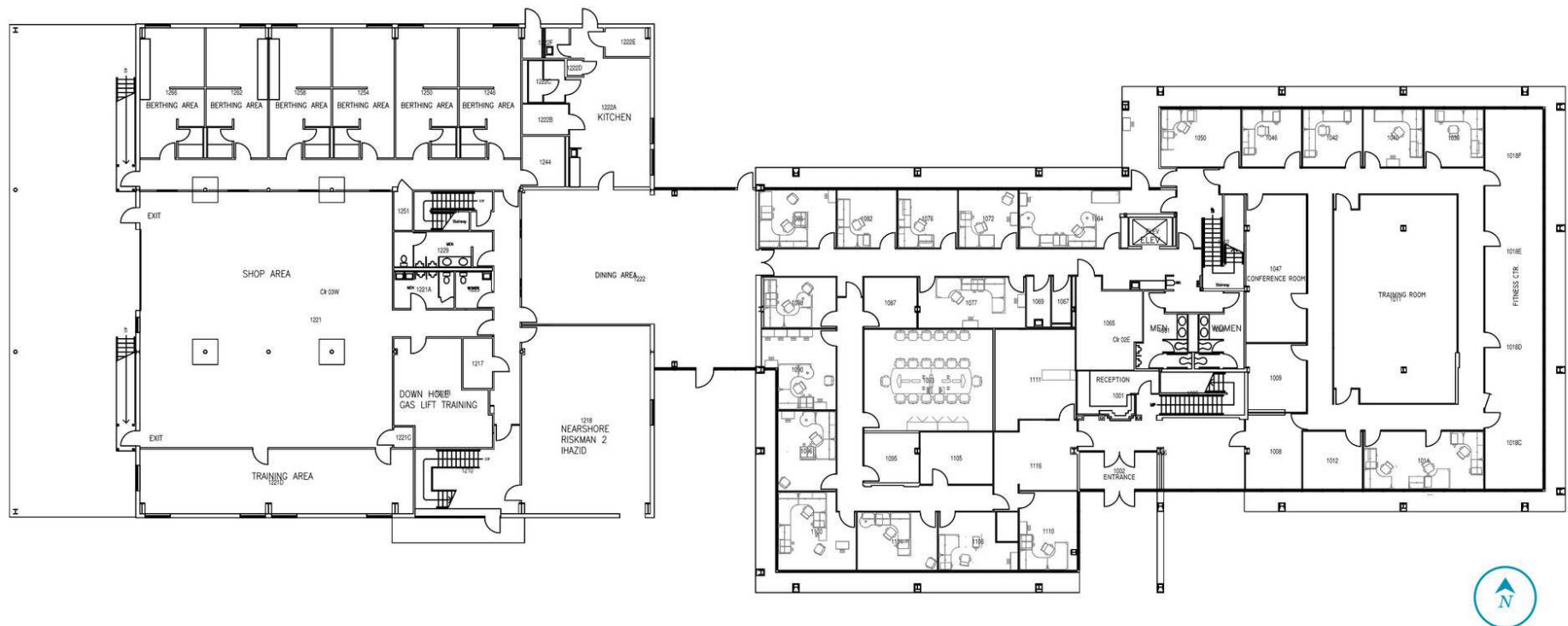
- Located in Lafayette with excellent access to major highways and nearby amenities
- Two-building campus on 4.71 acres of landscaped grounds
- 134 parking spaces, including 10 oversized truck stalls
- Flexible facilities: office space, conference/training rooms, recreation lounge, medical station
- Full commercial kitchen and on-site dormitories
- Warehouse space for storage and operations
- Additional land available for future expansion

OFFERING SUMMARY

Lease Rate:	Negotiable
Available SF:	45,326 SF
Lot Size:	4.71 Acres
Building Size:	45,326 SF



INFORMATION SUBJECT TO VERIFICATION & NO LIABILITY FOR ERRORS & OMISSION ASSUMED. // LICENSED IN LOUISIANA



First Floor - 22,148 RSF

INFORMATION SUBJECT TO VERIFICATION & NO LIABILITY FOR ERRORS & OMISSION ASSUMED. // LICENSED IN LOUISIANA

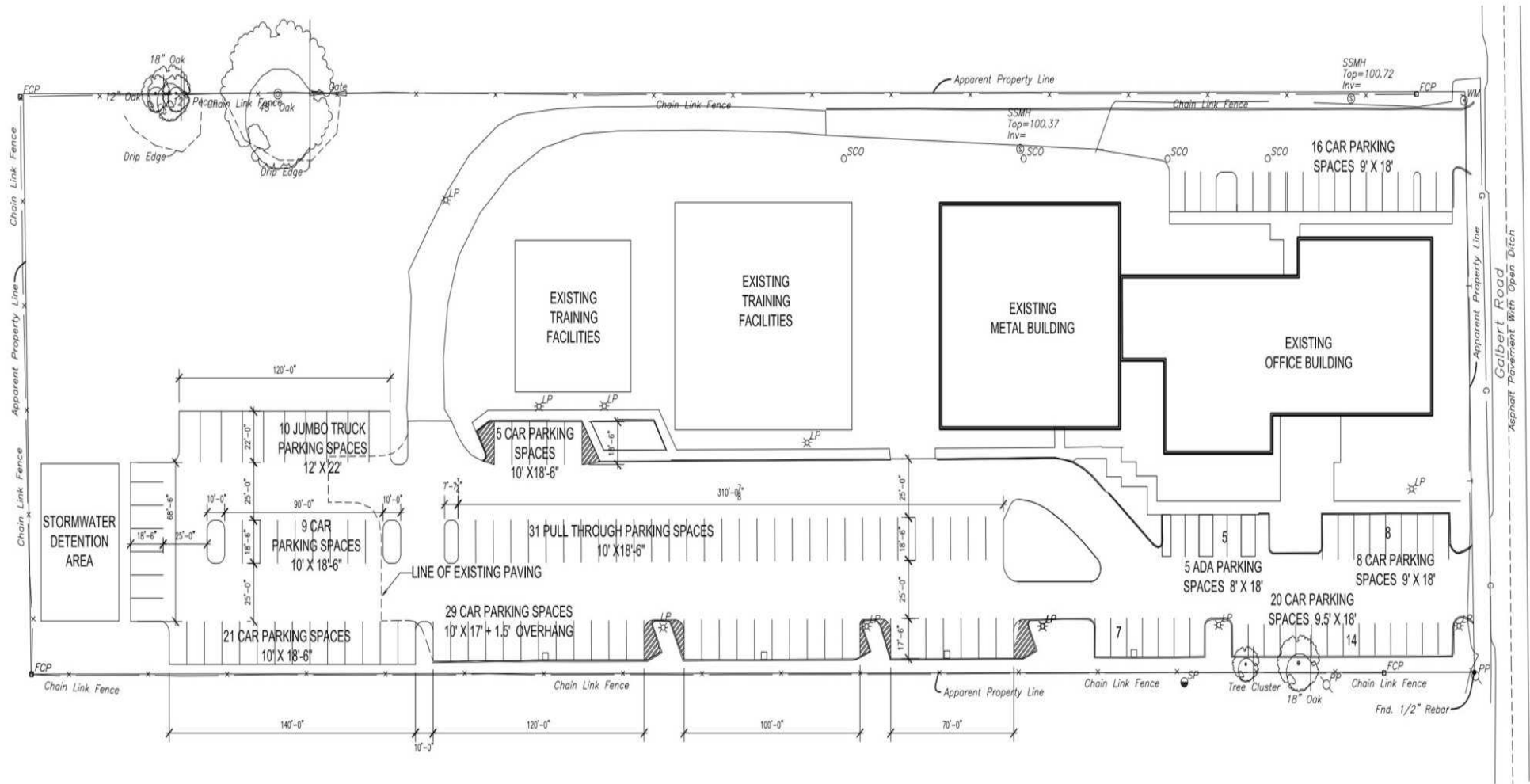


Second Floor

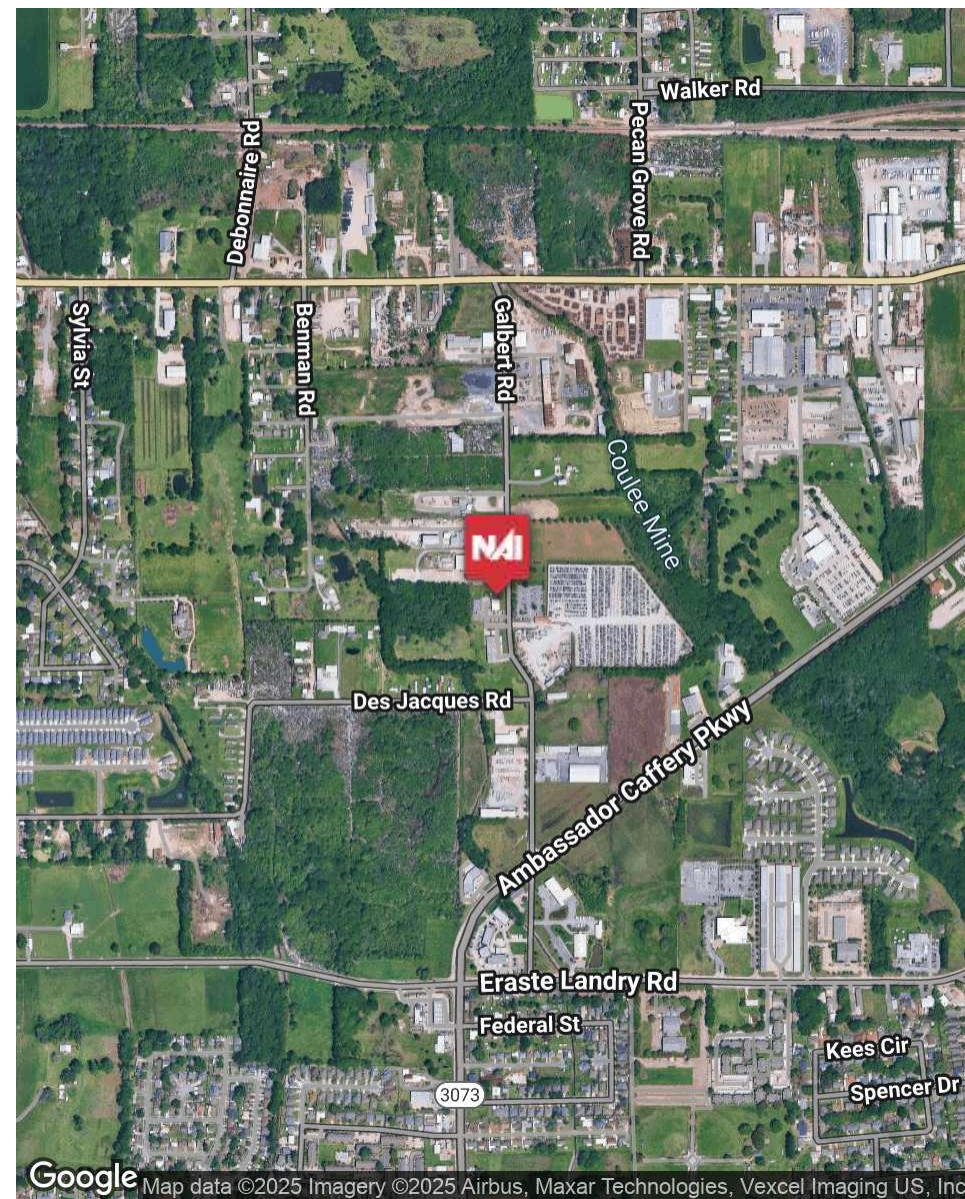
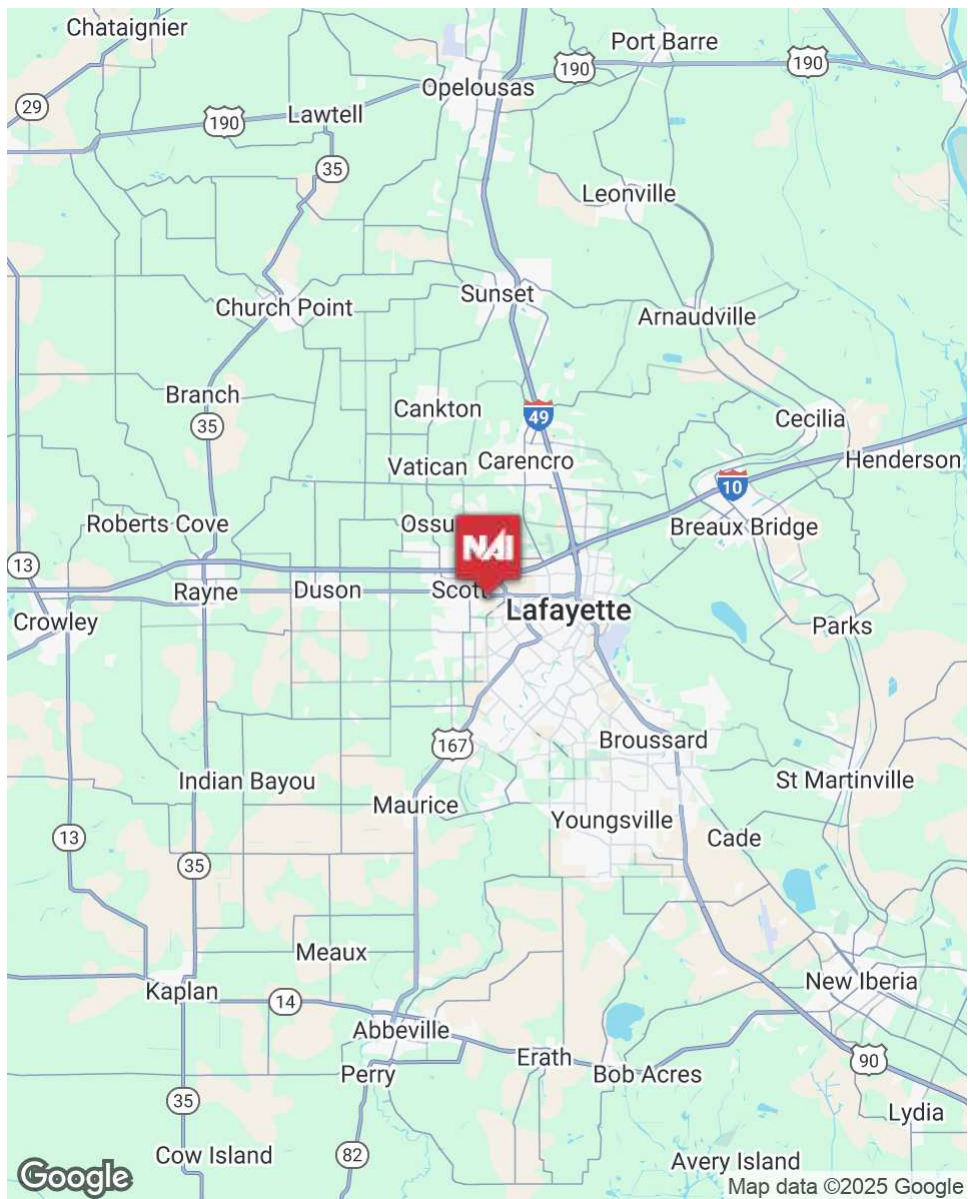
West Bldg 2nd Floor: 9,994 SF

East Bldg 2nd Floor: 13,184 SF

INFORMATION SUBJECT TO VERIFICATION & NO LIABILITY FOR ERRORS & OMISSION ASSUMED. // LICENSED IN LOUISIANA



INFORMATION SUBJECT TO VERIFICATION & NO LIABILITY FOR ERRORS & OMISSION ASSUMED. // LICENSED IN LOUISIANA



INFORMATION SUBJECT TO VERIFICATION & NO LIABILITY FOR ERRORS & OMISSION ASSUMED. // LICENSED IN LOUISIANA



GALBERT ROAD

For More Information:

Dex Shill

Commercial Sales & Leasing

225.284.9092

dexshill@rampartcre.com

NAI Rampart

1700 City Farm Drive
Baton Rouge, LA 70806

www.rampartcre.com

