

397 E. RAILROAD AVE

DENHAM SPRINGS, LA 70726



FOR LEASE

CONTIGUOUS SPACE:

6,727+/- SF

LEASE RATE:

\$15 PSF

PROPERTY SUBTYPE:

OFFICE, WAREHOUSE, RETAIL

PROPERTY DESCRIPTION:

- THIS SPACE IS LOCATED IN THE HEART OF DENHAM SPRINGS RIGHT OFF N HUMMELL ST AND RIGHT BY ANTIQUE VILLAGE.
- 4 OFFICES/WAREHOUSE AVAILABLE WITH PLENTY OF ROOM TO ACCOMMODATE STAFF AND CLIENTS.
 - SUITE A: 1,300 SQFT
 - SUITE B: SUNSHINE CLEANERS
 - SUITE C: 1,556 SQFT
 - SUITE D: 1,382 SQFT
 - SUITE E: 1,352 SQFT
- THE SPACE OFFERS CONVENIENT ACCESS TO MAJOR HIGHWAYS, SHOPPING CENTERS, AND RESTAURANTS.

DAVID TRUSTY, BROKER

225.766.6162

WWW.TRUSTYCOMMERCIAL.COM



OVERVIEW



CONTACT:

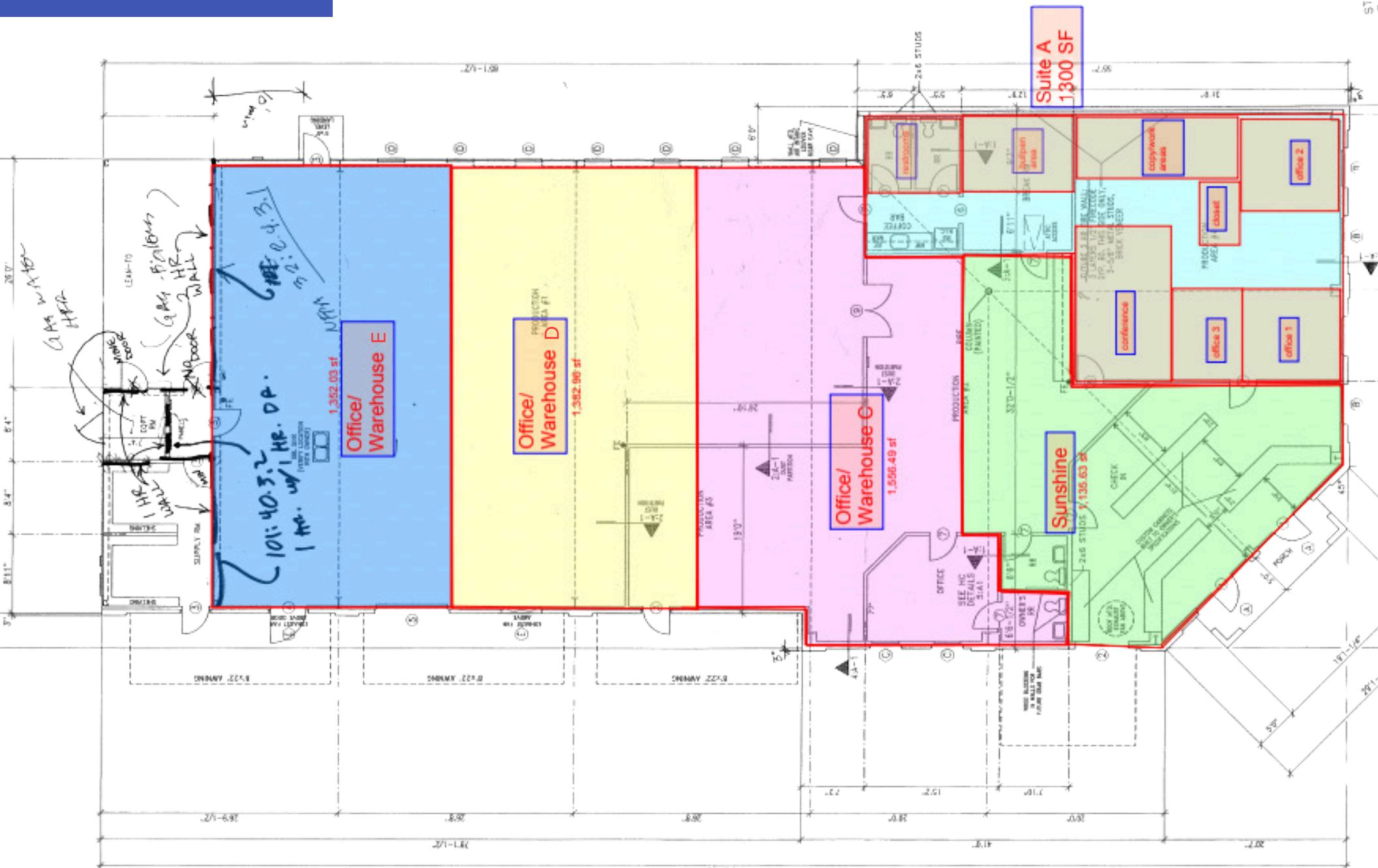
DAVID TRUSTY, BROKER
225.766.6162

EXTERIOR



CONTACT:
DAVID TRUSTY, BROKER
225.766.6162

FLOOR PLAN



CONTACT:

DAVID TRUSTY, BROKER
225.766.6162

FOR A PERSONAL TOUR, PLEASE CALL.

PRESENTED BY
DAVID TRUSTY, BROKER
225.766.6162

