

FOR LEASE

WILLIAMSBURG ATTRACTIVE OFFICE SPACE

2020 E 70TH STREET, SHREVEPORT, LA 71105



PROPERTY HIGHLIGHTS

- Professional Office Building
- Space Available as Small as One Room Office 217 SF, Up to Contiguous Space of 1,985 SF
- 1,985 Square Feet May Be Subdivided
- AT&T Fiber Served: Blazing Fast Internet with Cloud Solution and Broadband Service Options
- Full Service Lease; Landlord Provides Utilities, Janitorial, and All Maintenance
- Great Location in South Shreveport on E. 70th Street convenient to South Bossier, Clyde Fant Parkway and Arthur Teague Parkway
- Elevator Available
- Good Free Parking Area



For More Information, Contact:

Michele Sauls | Associate Broker

O: 318.212.1637

C: 318.458.9068

msauls@vintagerealty.com

All Information Contained Herein Is Believed To Be Accurate, But Is Not Warranted And No Liability Of Errors Or Omissions Is Assured By Either The Property Owner Or Vintage Realty Company Or Its Agents And Employees. Prices As Stated Herein And Product Availability Is Subject To Change And/Or Sale Or Lease Without Prior Notice, And All Sizes And Dimensions Are Subject To Correction.
Rev 05/2018


VINTAGE
REALTY COMPANY
318.222.2244

FOR LEASE

WILLIAMSBURG ATTRACTIVE OFFICE SPACE

2020 E 70TH STREET, SHREVEPORT, LA 71105



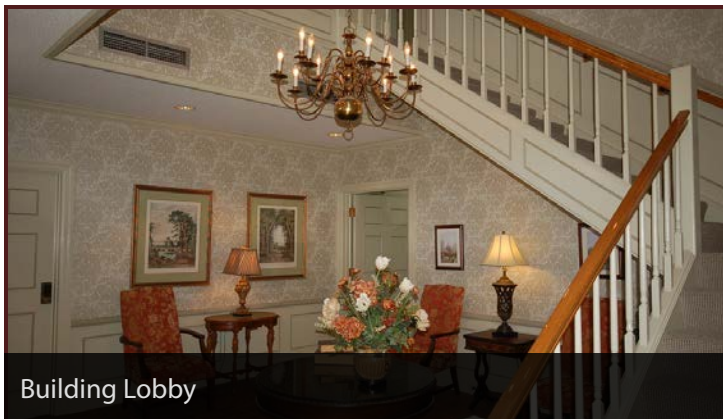
Surrounding Businesses



Coffee Bar In Suite



Office Reception Area



Building Lobby



Building Breakroom

For More Information, Contact:

Michele Sauls | Associate Broker

O: 318.212.1637

C: 318.458.9068

msauls@vintagerealty.com

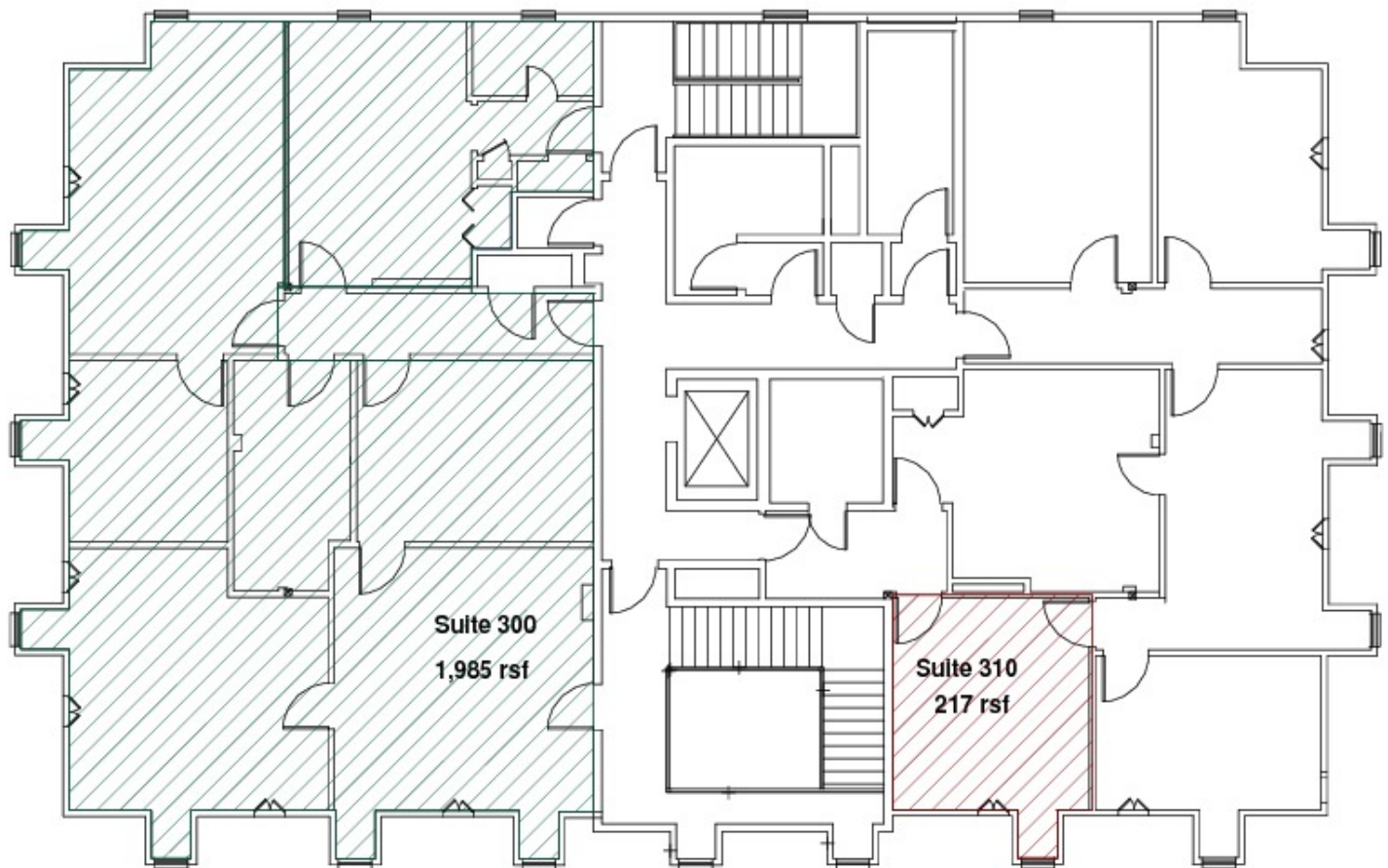
All Information Contained Herein Is Believed To Be Accurate, But Is Not Warranted And No Liability Of Errors Or Omissions Is Assured By Either The Property Owner Or Vintage Realty Company Or Its Agents And Employees. Prices As Stated Herein And Product Availability Is Subject To Change And/Or Sale Or Lease Without Prior Notice, And All Sizes And Dimensions Are Subject To Correction.
Rev 05/2018


VINTAGE
REALTY COMPANY
318.222.2244

FOR LEASE

WILLIAMSBURG ATTRACTIVE OFFICE SPACE

2020 E 70TH STREET, SHREVEPORT, LA 71105



Williamsburg Office Center

2020 East 70th Street

3

For More Information, Contact:

Michele Sauls | Associate Broker

O: 318.212.1637

C: 318.458.9068

msauls@vintagerealty.com

All Information Contained Herein Is Believed To Be Accurate, But Is Not Warranted And No Liability Of Errors Or Omissions Is Assured By Either The Property Owner Or Vintage Realty Company Or Its Agents And Employees. Prices As Stated Herein And Product Availability Is Subject To Change And/Or Sale Or Lease Without Prior Notice, And All Sizes And Dimensions Are Subject To Correction.
Rev 05/2018



REALTY COMPANY

318.222.2244

FOR LEASE

WILLIAMSBURG ATTRACTIVE OFFICE SPACE

2020 E 70TH STREET, SHREVEPORT, LA 71105



For More Information, Contact:

Michele Sauls | Associate Broker

O: 318.212.1637

C: 318.458.9068

msauls@vintagerealty.com

All Information Contained Herein Is Believed To Be Accurate, But Is Not Warranted And No Liability Of Errors Or Omissions Is Assured By Either The Property Owner Or Vintage Realty Company Or Its Agents And Employees. Prices As Stated Herein And Product Availability Is Subject To Change And/Or Sale Or Lease Without Prior Notice, And All Sizes And Dimensions Are Subject To Correction.
Rev 05/2018



REALTY COMPANY

318.222.2244