

# SALE

## ST CLAUDE OFFICE BUILDING

3401 Saint Claude Ave New Orleans, LA 70117



SALE PRICE

\$750,000

**Ron Patron**

(504) 566-1777

©2023 Coldwell Banker. All Rights Reserved. Coldwell Banker Commercial® and the Coldwell Banker Commercial logos are trademarks of Coldwell Banker Real Estate LLC. The Coldwell Banker® System is comprised of company owned offices which are owned by a subsidiary of Anywhere Advisors LLC and franchised offices which are independently owned and operated. The Coldwell Banker System fully supports the principles of the Equal Opportunity Act.



COLDWELL BANKER  
**COMMERCIAL**  
TEC

# SALE

## ST CLAUDE OFFICE BUILDING

3401 Saint Claude Ave New Orleans, LA 70117

### 3 PROPERTY INFORMATION

Property Summary

Property Description

Additional Photos

### 7 LOCATION INFORMATION

Regional Map

Location Map

Site Plans

### 11 DEMOGRAPHICS

Demographics Map & Report

---

**Ron Patron**  
(504) 566-1777



COLDWELL BANKER  
**COMMERCIAL**  
TEC

# SALE

## ST CLAUDE OFFICE BUILDING

3401 Saint Claude Ave New Orleans, LA 70117



SALE PRICE

\$750,000

**Ron Patron**  
(504) 566-1777

©2023 Coldwell Banker. All Rights Reserved. Coldwell Banker Commercial® and the Coldwell Banker Commercial logos are trademarks of Coldwell Banker Real Estate LLC. The Coldwell Banker® System is comprised of company owned offices which are owned by a subsidiary of Anywhere Advisors LLC and franchised offices which are independently owned and operated. The Coldwell Banker System fully supports the principles of the Equal Opportunity Act.



COLDWELL BANKER  
**COMMERCIAL**  
TEC

# SALE

## ST CLAUDE OFFICE BUILDING

3401 Saint Claude Ave New Orleans, LA 70117



### PROPERTY DESCRIPTION

Introducing a prime investment opportunity in the heart of the Bywater area, this 5,737 SF building boasts 8 units ideally suited for office space. Originally constructed in 1960 and thoughtfully renovated in 2024, the property features a modernized interior, offering a turnkey solution for discerning investors. Zoned HMC-2 and strategically located, this property presents an excellent opportunity for those seeking a strategic investment in the vibrant Bywater district. With its attractive features and potential for significant returns, this property represents the ideal choice for investors looking to capitalize on the thriving commercial real estate market in New Orleans.

### PROPERTY HIGHLIGHTS

- 5,737 SF building
- 8 units

### OFFERING SUMMARY

Sale Price:	\$750,000
Number of Units:	8
Lot Size:	3,600 SF
Building Size:	5,737 SF

DEMOGRAPHICS	0.3 MILES	0.5 MILES	1 MILE
Total Households	1,305	3,227	8,166
Total Population	2,449	6,126	15,923
Average HH Income	\$72,836	\$69,110	\$64,035

**Ron Patron**  
(504) 566-1777



**COLDWELL BANKER**  
**COMMERCIAL**  
TEC

# SALE

## ST CLAUDE OFFICE BUILDING

3401 Saint Claude Ave New Orleans, LA 70117



### PROPERTY DESCRIPTION

Introducing a prime investment opportunity in the heart of the Bywater area, this 5,737 SF building boasts 8 units ideally suited for office space. Originally constructed in 1960 and thoughtfully renovated in 2024, the property features a modernized interior, offering a turnkey solution for discerning investors. Zoned HMC-2 and strategically located, this property presents an excellent opportunity for those seeking a strategic investment in the vibrant Bywater district. With its attractive features and potential for significant returns, this property represents the ideal choice for investors looking to capitalize on the thriving commercial real estate market in New Orleans.

### LOCATION DESCRIPTION

Discover the vibrant neighborhood surrounding the St. Claude Office Building in the heart of the Bywater district. Enjoy a dynamic mix of historic charm and modern amenities, with an eclectic array of art galleries, trendy cafes, and unique boutiques. The location provides convenient access to the bustling St. Claude Avenue, known for its thriving arts scene and cultural diversity. Embrace the local community spirit and explore nearby attractions such as Crescent Park, offering stunning views of the Mississippi River, and the St. Roch Market, a food hall showcasing the best of New Orleans' culinary scene. Immerse yourself in the energy and creativity of this sought-after area, offering an exciting opportunity for office building investment or owner occupant.

**Ron Patron**  
(504) 566-1777

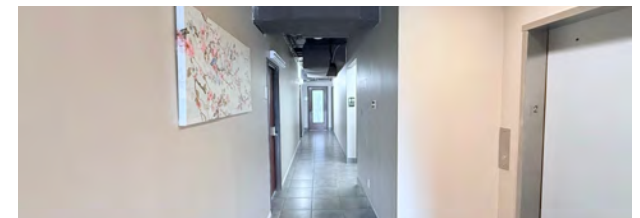
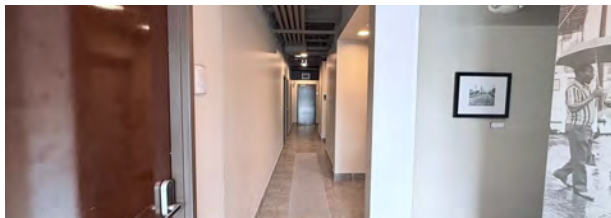
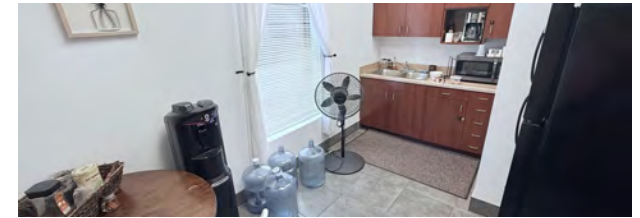
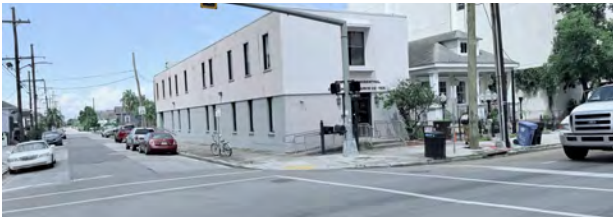
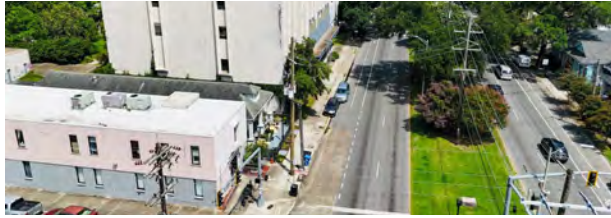


**COLDWELL BANKER**  
**COMMERCIAL**  
TEC

# SALE

## ST CLAUDE OFFICE BUILDING

3401 Saint Claude Ave New Orleans, LA 70117



Ron Patron  
(504) 566-1777

# SALE

## ST CLAUDE OFFICE BUILDING

3401 Saint Claude Ave New Orleans, LA 70117



SALE PRICE

\$750,000

**Ron Patron**  
(504) 566-1777

©2023 Coldwell Banker. All Rights Reserved. Coldwell Banker Commercial® and the Coldwell Banker Commercial logos are trademarks of Coldwell Banker Real Estate LLC. The Coldwell Banker® System is comprised of company owned offices which are owned by a subsidiary of Anywhere Advisors LLC and franchised offices which are independently owned and operated. The Coldwell Banker System fully supports the principles of the Equal Opportunity Act.

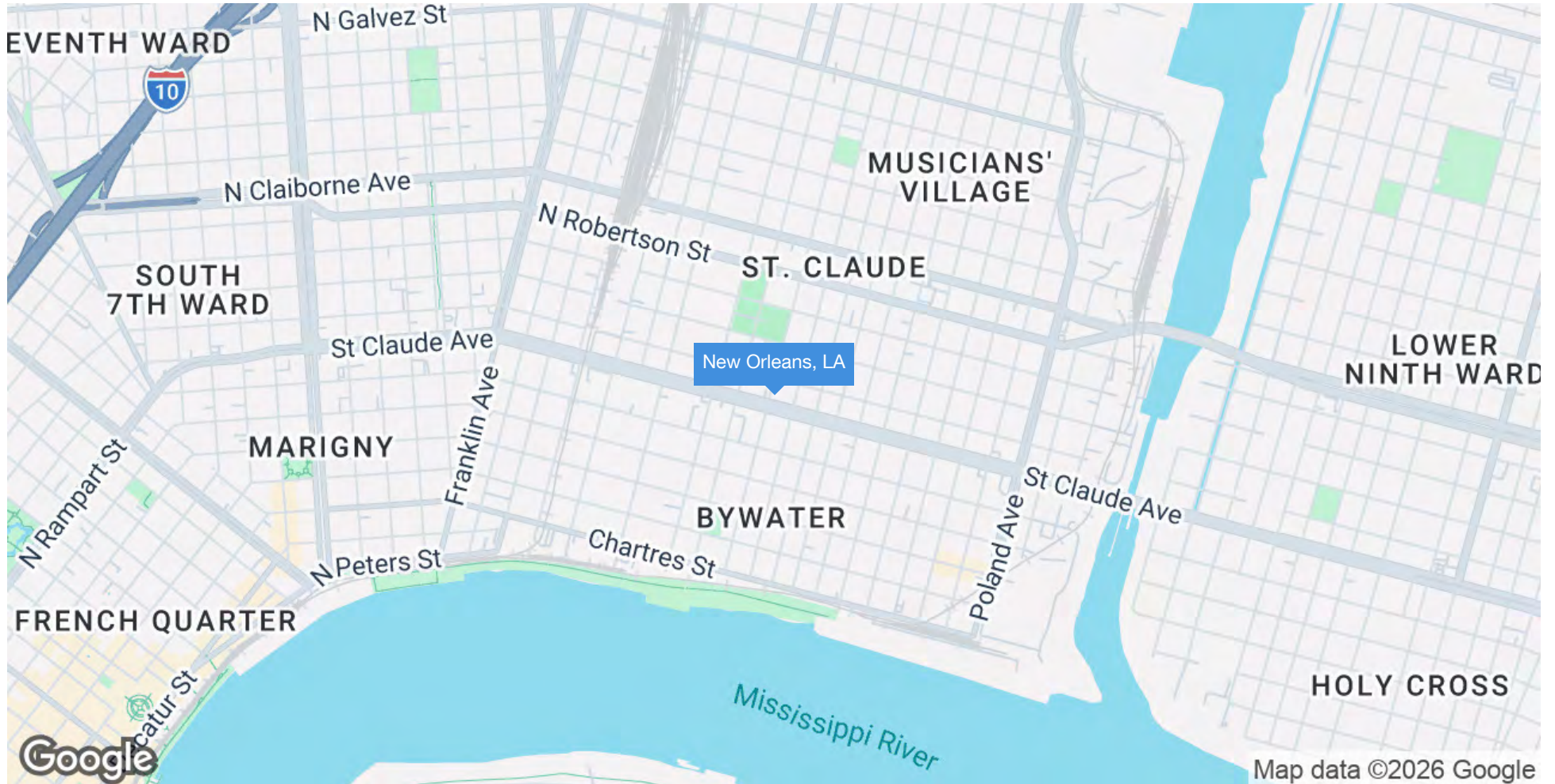


**COLDWELL BANKER**  
**COMMERCIAL**  
TEC

# SALE

## ST CLAUDE OFFICE BUILDING

3401 Saint Claude Ave New Orleans, LA 70117



Ron Patron  
(504) 566-1777



COLDWELL BANKER  
**COMMERCIAL**  
TEC

# SALE

## ST CLAUDE OFFICE BUILDING

3401 Saint Claude Ave New Orleans, LA 70117



Ron Patron  
(504) 566-1777



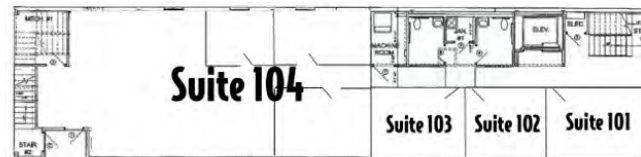
COLDWELL BANKER  
**COMMERCIAL**  
TEC

# SALE

## ST CLAUDE OFFICE BUILDING

3401 Saint Claude Ave New Orleans, LA 70117

### 1st Floor



### 2nd Floor



Ron Patron  
(504) 566-1777



COLDWELL BANKER  
**COMMERCIAL**  
TEC

# SALE

## ST CLAUDE OFFICE BUILDING

3401 Saint Claude Ave New Orleans, LA 70117



SALE PRICE

\$750,000

**Ron Patron**  
(504) 566-1777

©2023 Coldwell Banker. All Rights Reserved. Coldwell Banker Commercial® and the Coldwell Banker Commercial logos are trademarks of Coldwell Banker Real Estate LLC. The Coldwell Banker® System is comprised of company owned offices which are owned by a subsidiary of Anywhere Advisors LLC and franchised offices which are independently owned and operated. The Coldwell Banker System fully supports the principles of the Equal Opportunity Act.



COLDWELL BANKER  
**COMMERCIAL**  
TEC

# SALE

## ST CLAUDE OFFICE BUILDING

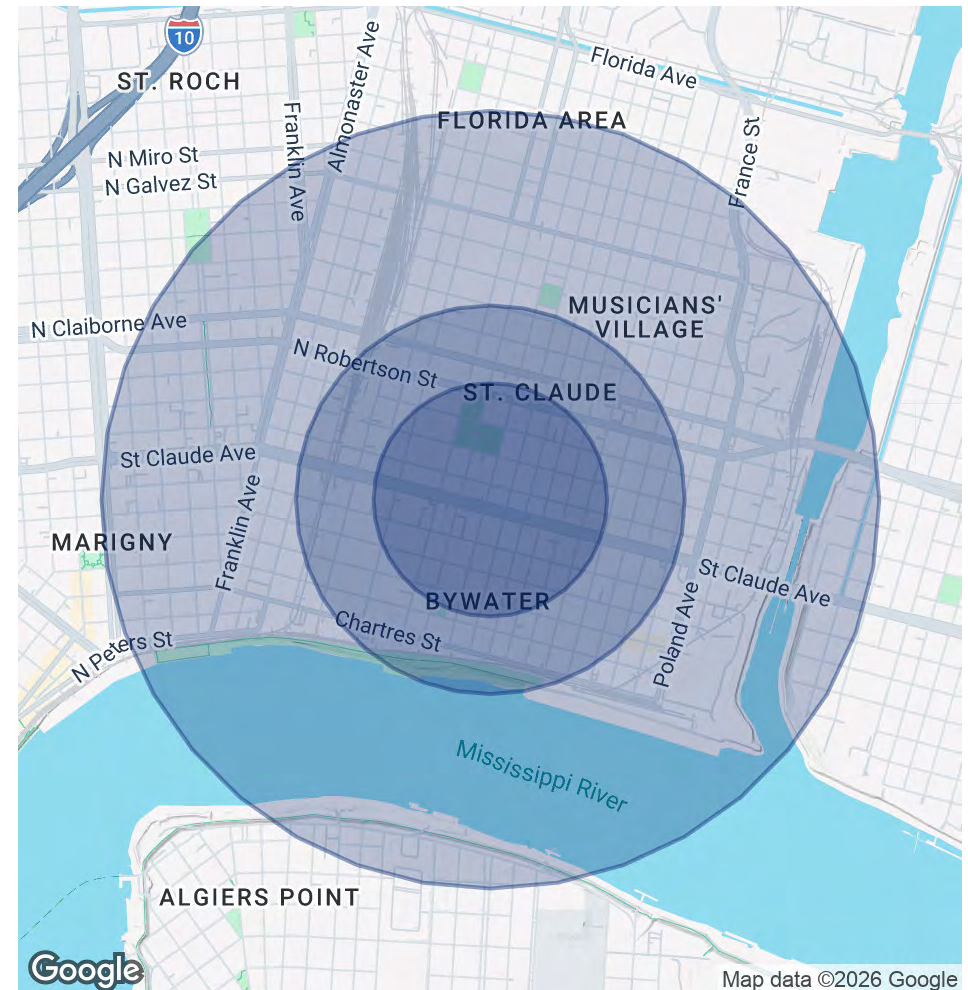
3401 Saint Claude Ave New Orleans, LA 70117

POPULATION	0.3 MILES	0.5 MILES	1 MILE
Total Population	2,449	6,126	15,923
Average Age	43	42	42
Average Age (Male)	43	42	42
Average Age (Female)	43	42	42

HOUSEHOLDS & INCOME	0.3 MILES	0.5 MILES	1 MILE
Total Households	1,305	3,227	8,166
# of Persons per HH	1.9	1.9	1.9
Average HH Income	\$72,836	\$69,110	\$64,035
Average House Value	\$462,333	\$447,491	\$403,249

Demographics data derived from AlphaMap



**Ron Patron**  
(504) 566-1777



**COLDWELL BANKER**  
**COMMERCIAL**  
TEC