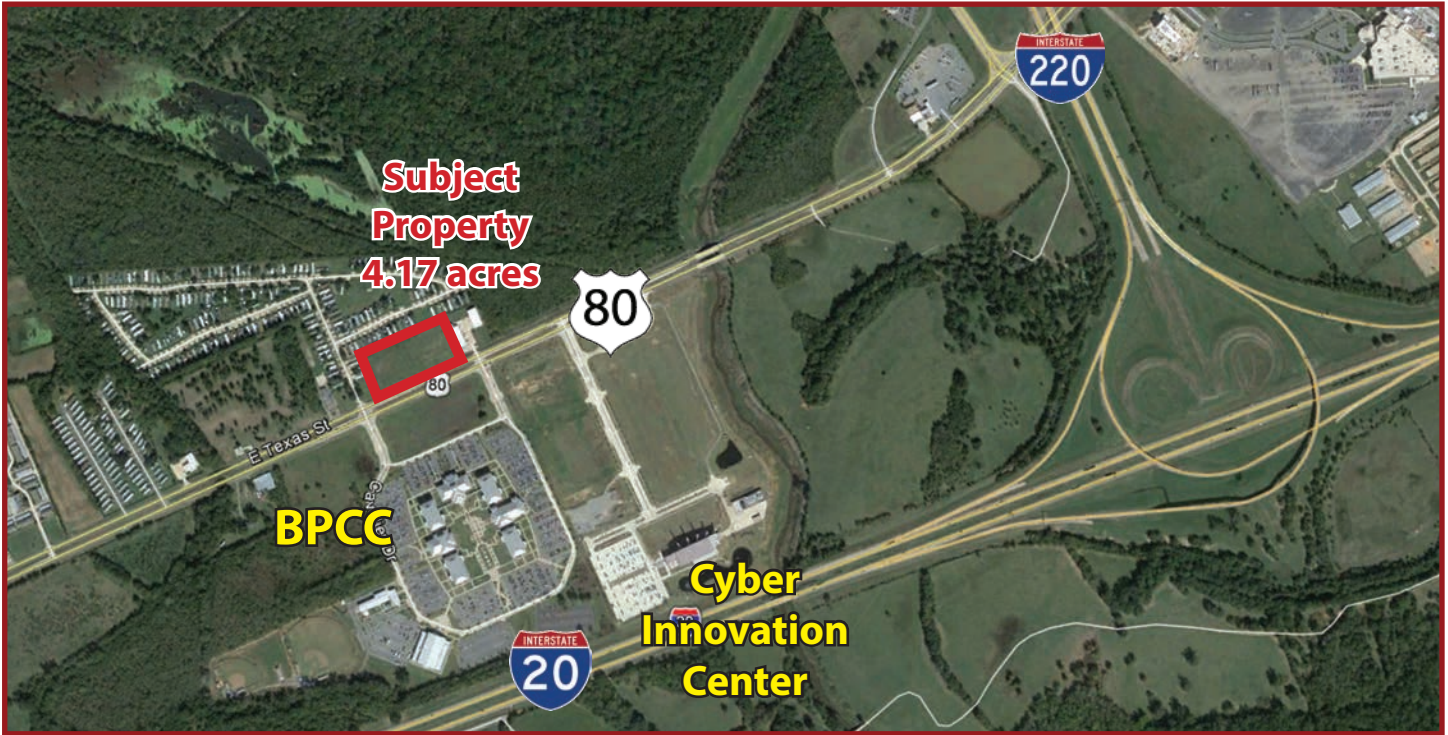


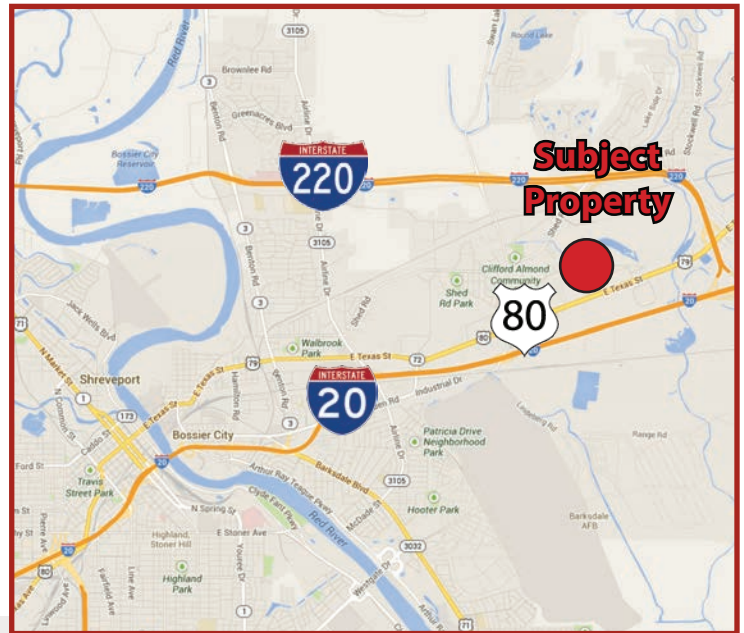
HIGHWAY 80 FACING BOSSIER PARISH COMMUNITY COLLEGE BOSSIER CITY, LOUISIANA

COMMUNITY COLLEGE RETAIL DEVELOPMENT SITES



HIGHLIGHTS

- 4.17 ACRES DIRECTLY ACROSS HIGHWAY 80 FROM BPCC
- 600' +/- FRONTAGE ON HIGHWAY 80
- LAND IS CLEARED WITH EASY ACCESS TO UTILITIES
- EXCELLENT OPPORTUNITY TO BENEFIT FROM HIGH STUDENT POPULATION
- OWNER WILL ASSIST WITH ZONING CHANGE FROM I-2 TO B-3
- MINERAL RIGHTS RESERVED



For More Information Contact:

Michael Morrison | Chris Susilovich | 318-222-2244

Vintage Realty Company | vintagerealty.com

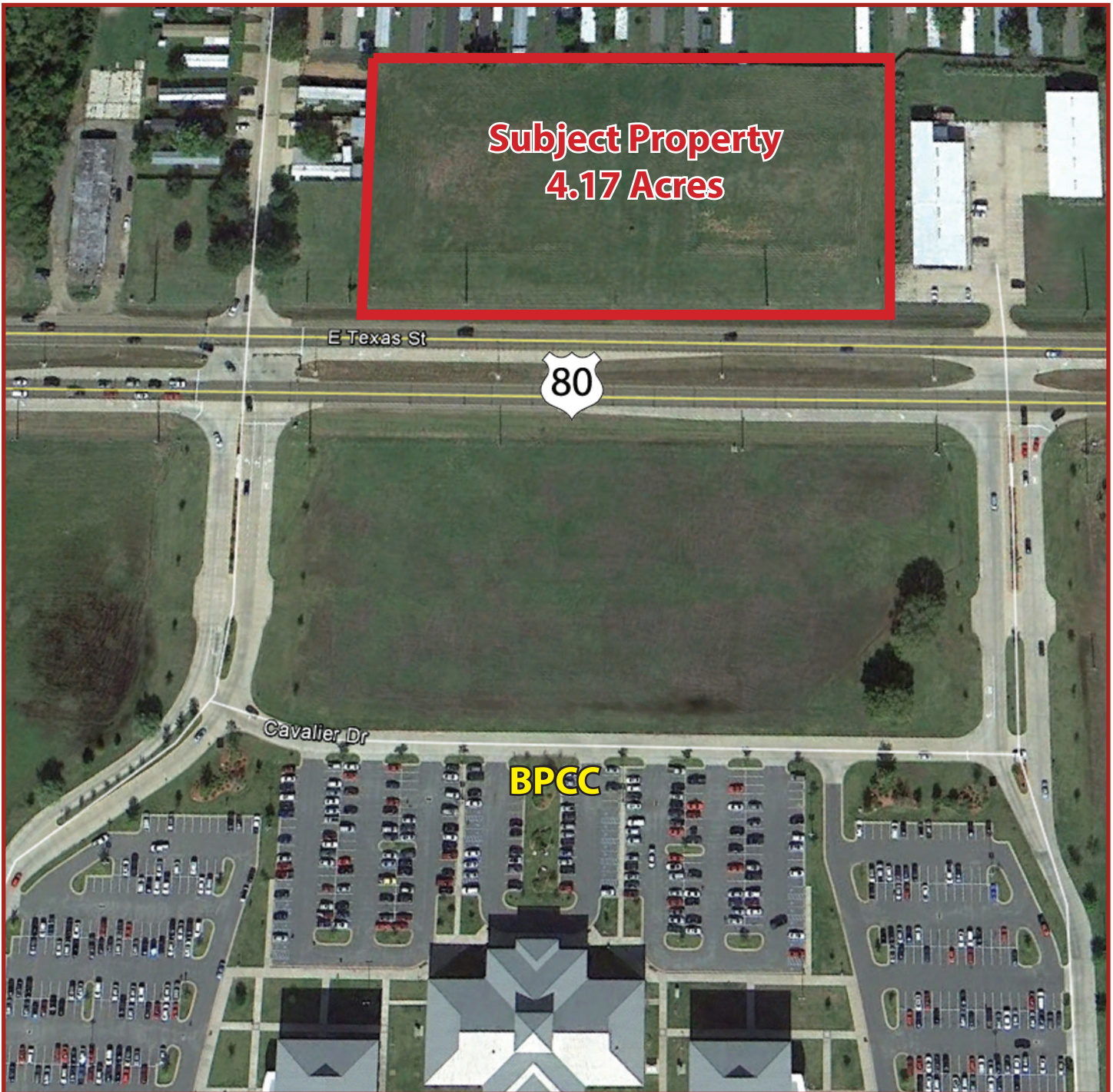
mmorrison@vintagerealty.com | csusilovich@vintagerealty.com

ALL INFORMATION CONTAINED HEREIN IS BELIEVED TO BE ACCURATE, BUT IS NOT WARRANTED AND NO LIABILITY OF ERRORS OR OMISSIONS IS ASSURED BY EITHER THE PROPERTY OWNER OR VINTAGE REALTY COMPANY OR ITS AGENTS AND EMPLOYEES. PRICES AS STATED HEREIN AND PRODUCT AVAILABILITY IS SUBJECT TO CHANGE AND/OR SALE OR LEASE WITHOUT PRIOR NOTICE, AND ALL SIZES AND DIMENSIONS ARE SUBJECT TO CORRECTION.



HIGHWAY 80 FACING BOSSIER PARISH COMMUNITY COLLEGE
BOSSIER CITY, LOUISIANA

COMMUNITY COLLEGE RETAIL DEVELOPMENT SITES



For More Information Contact:

Michael Morrison | Chris Susilovich | 318-222-2244

Vintage Realty Company | vintagerealty.com

mmorrison@vintagerealty.com | csusilovich@vintagerealty.com

ALL INFORMATION CONTAINED HEREIN IS BELIEVED TO BE ACCURATE, BUT IS NOT WARRANTED AND NO LIABILITY OF ERRORS OR OMISSIONS IS ASSURED BY EITHER THE PROPERTY OWNER OR VINTAGE REALTY COMPANY OR ITS AGENTS AND EMPLOYEES. PRICES AS STATED HEREIN AND PRODUCT AVAILABILITY IS SUBJECT TO CHANGE AND/OR SALE OR LEASE WITHOUT PRIOR NOTICE, AND ALL SIZES AND DIMENSIONS ARE SUBJECT TO CORRECTION.

