



## 8279 West Antoine Loop TRACT 3: 5 Acres

**Brandon Creel**

Direct 318.698.3120  
Mobile 318.402.5054  
BrandonC@sealynet.com

**Roland Ricou**

Direct 318.698.1109  
Mobile 318.773.3357  
RolandR@Sealynet.com

**Sealy Real Estate Services, LLC**

333 Texas Street, Suite 1050  
Shreveport, LA 71101

318.222.8700  
www.sealynet.com



**Tract 3 Property Details**

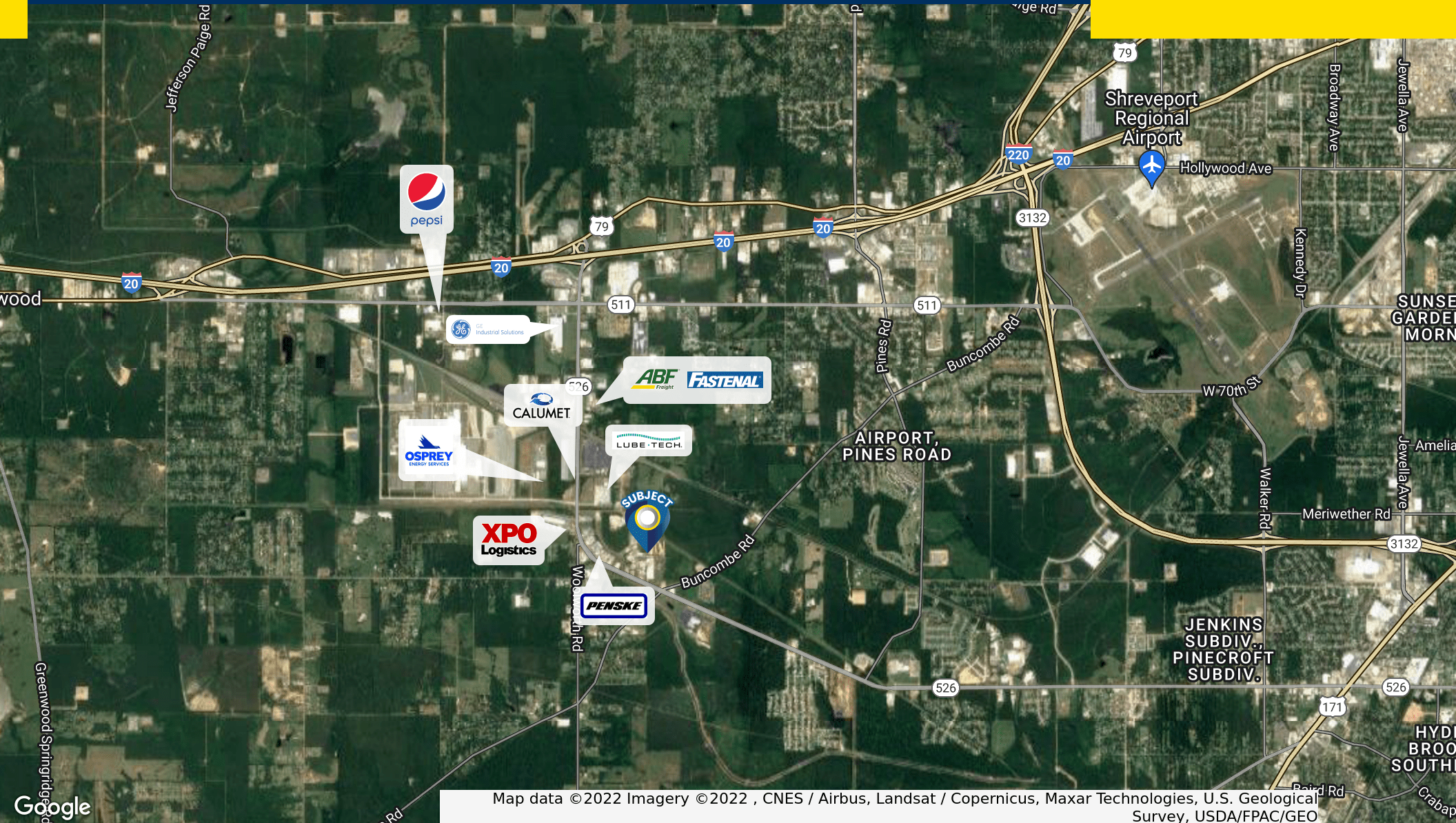
Land Area	5 Acres
Lease Rate	\$500 / Acre (Monthly) \$0.14/SF (Annual)
Base Monthly Rent	\$2,500
Lease Type	Gross
Zoning	I-1
Lot Depth	656 Feet
Topography	Level
Opportunity Zone	Yes

**Property & Location Overview**

Approximately 5-acres of cleared, grade level, raw land available. It can be subdivided and there are adjacent lots also available for lease. The property is located on the west side of Shreveport in a heavy industrial area surrounded by extensive manufacturing facilities and distribution warehouses. Major companies in the area include Calumet, LubeTech, BJ Services, and Hyundai Glovis. It's located 1.8 miles south of Interstate 20, 5.7 miles from LA Innerloop Hwy 3132, and less than seven miles from Shreveport Regional Airport. Land splits are available.







Map data ©2022 Imagery ©2022 , CNES / Airbus, Landsat / Copernicus, Maxar Technologies, U.S. Geological Survey, USDA/FPAC/GEO

**Sealy Real Estate Services, LLC**  
333 Texas Street, Suite 1050  
Shreveport, LA 71101  
318.222.8700  
[www.sealynet.com](http://www.sealynet.com)

**Brandon Creel**  
Direct 318.698.3120  
Mobile 318.402.5054  
[BrandonC@sealynet.com](mailto:BrandonC@sealynet.com)

**Roland Ricou**  
Direct 318.698.1109  
Mobile 318.773.3357  
[RolandR@Sealynet.com](mailto:RolandR@Sealynet.com)

All information set forth in this brochure has been obtained from the owner, personal observation, or other reliable sources. Sealy Real Estate Services, LLC does not guarantee the accuracy of this information and makes no representations or warranties, expressed or implied, in this brochure. Information contained herein is subject to change without notice.





[View Tract 1  
Lease Info](#)

[View Tract 2  
Lease Info](#)