



YOUREE PLAZA FOR LEASE

7230 YOUREE DRIVE, SHREVEPORT, LA 71105

- Available for lease:
Suite 109 - 2,200 SF
- High traffic retail corridor with numerous national retail anchors
- 57,162 cars per day
- Outparcel retail strip center
- Located directly in front of Sam's Club
- Excellent signage on Youree Drive
- Tenants include Verizon Wireless, Batteries Plus, LaBloom Florist, Hertz Rental, Firehouse Subs, One Main Financial and Nail Spa
- Zoned C-3



DEMOGRAPHICS

	Population	Avg HH Income	Households
1 mi	7,647	\$69,472	3,529
3 mi	58,475	\$70,310	24,521
5 mi	130,565	\$58,022	52,504

For more information, contact:

Hilary Bransford | 318.222.2244

hbransford@vintagerealty.com | vintagerealty.com

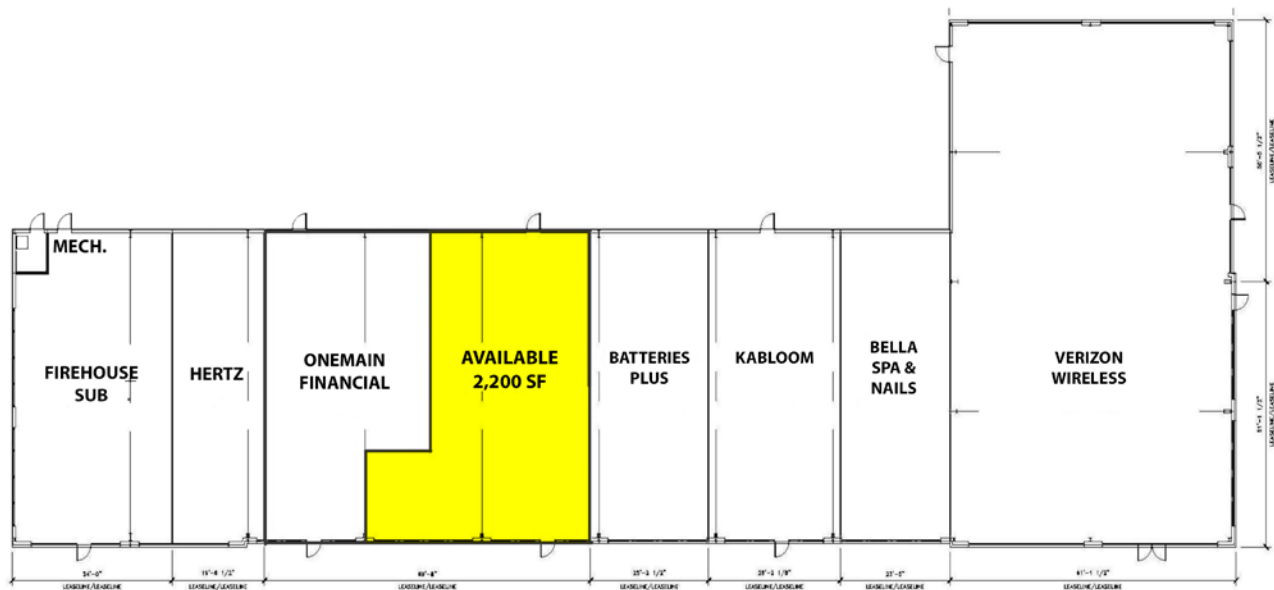
ALL INFORMATION CONTAINED HEREIN IS BELIEVED TO BE ACCURATE, BUT IS NOT WARRANTED AND NO LIABILITY OF ERRORS OR OMISSIONS IS ASSURED BY EITHER THE PROPERTY OWNER OR VINTAGE REALTY COMPANY OR ITS AGENTS AND EMPLOYEES. PRICES AS STATED HEREIN AND PRODUCT AVAILABILITY IS SUBJECT TO CHANGE AND/OR SALE OR LEASE WITHOUT PRIOR NOTICE, AND ALL SIZES AND DIMENSIONS ARE SUBJECT TO CORRECTION. REV 9/2024



YOUREE PLAZA FOR LEASE

7230 YOUREE DRIVE
SHREVEPORT, LA 71105

Site Plan



For More Information Contact:

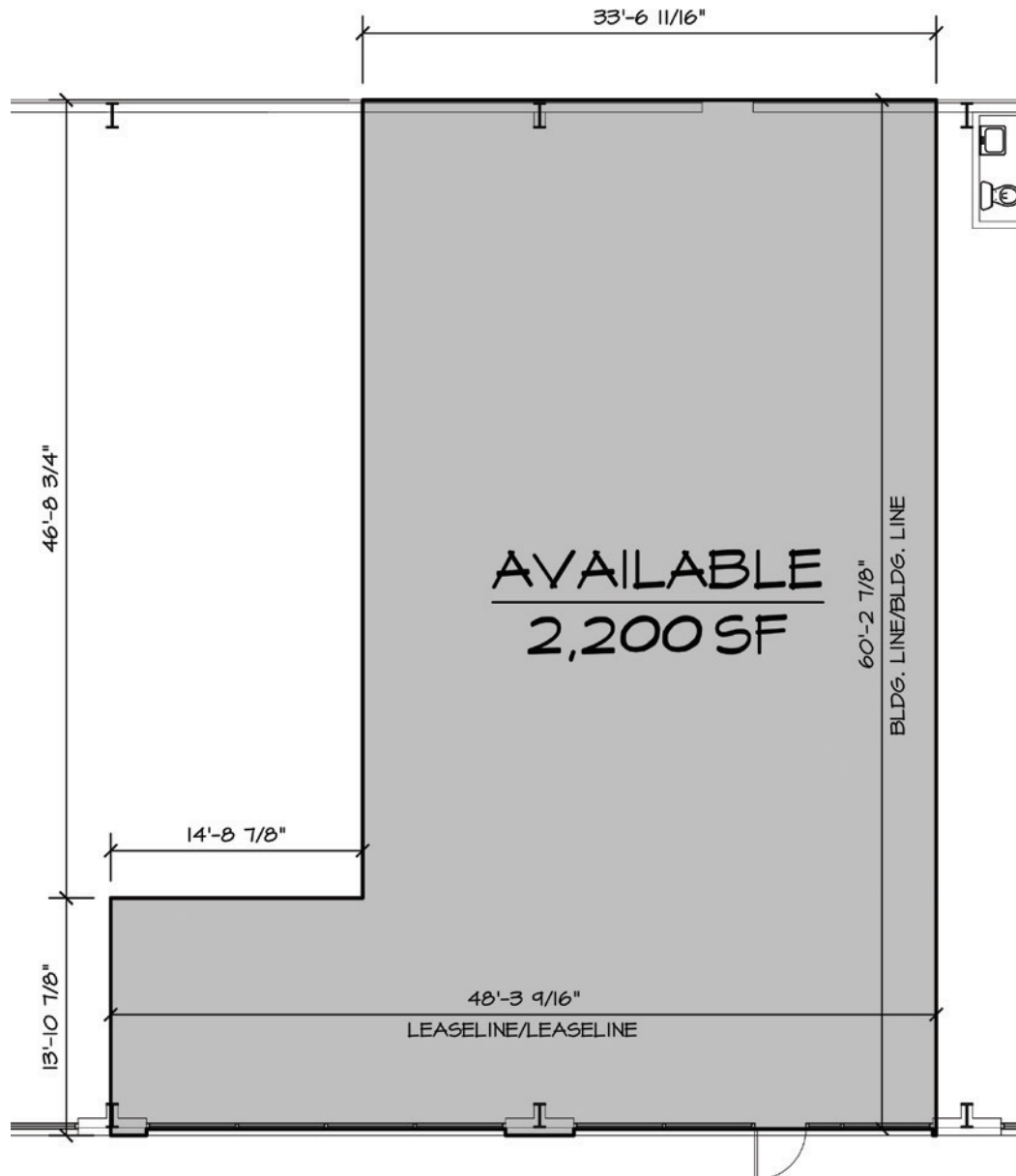
Hilary Bransford | 318-222-2244

hbransford@vintagerealty.com | vintagerealty.com

ALL INFORMATION CONTAINED HEREIN IS BELIEVED TO BE ACCURATE, BUT IS NOT WARRANTED AND NO LIABILITY OF ERRORS OR OMISSIONS IS ASSURED BY EITHER THE PROPERTY OWNER OR VINTAGE REALTY COMPANY OR ITS AGENTS AND EMPLOYEES. PRICES AS STATED HEREIN AND PRODUCT AVAILABILITY IS SUBJECT TO CHANGE AND/OR SALE OR LEASE WITHOUT PRIOR NOTICE, AND ALL SIZES AND DIMENSIONS ARE SUBJECT TO CORRECTION. 9/2024

YOUREE PLAZA FOR LEASE

7230 YOUREE DRIVE
SHREVEPORT, LA 71105



For More Information Contact:

Hilary Bransford | 318-222-2244

hbransford@vintagerealty.com | vintagerealty.com

ALL INFORMATION CONTAINED HEREIN IS BELIEVED TO BE ACCURATE, BUT IS NOT WARRANTED AND NO LIABILITY OF ERRORS OR OMISSIONS IS ASSURED BY EITHER THE PROPERTY OWNER OR VINTAGE REALTY COMPANY OR ITS AGENTS AND EMPLOYEES. PRICES AS STATED HEREIN AND PRODUCT AVAILABILITY IS SUBJECT TO CHANGE AND/OR SALE OR LEASE WITHOUT PRIOR NOTICE, AND ALL SIZES AND DIMENSIONS ARE SUBJECT TO CORRECTION. 9/2024

YOUREE PLAZA FOR LEASE

7230 YOUREE DRIVE
SHREVEPORT, LA 71105



For More Information Contact:

Hilary Bransford | 318-222-2244

hbransford@vintagerealty.com | vintagerealty.com

ALL INFORMATION CONTAINED HEREIN IS BELIEVED TO BE ACCURATE, BUT IS NOT WARRANTED AND NO LIABILITY OF ERRORS OR OMISSIONS IS ASSURED BY EITHER THE PROPERTY OWNER OR VINTAGE REALTY COMPANY OR ITS AGENTS AND EMPLOYEES. PRICES AS STATED HEREIN AND PRODUCT AVAILABILITY IS SUBJECT TO CHANGE AND/OR SALE OR LEASE WITHOUT PRIOR NOTICE, AND ALL SIZES AND DIMENSIONS ARE SUBJECT TO CORRECTION. 9/2024

YOUREE PLAZA FOR LEASE

7230 YOUREE DRIVE
SHREVEPORT, LA 71105



For More Information Contact:

Hilary Bransford | 318-222-2244

hbransford@vintagerealty.com | vintagerealty.com

ALL INFORMATION CONTAINED HEREIN IS BELIEVED TO BE ACCURATE, BUT IS NOT WARRANTED AND NO LIABILITY OF ERRORS OR OMISSIONS IS ASSURED BY EITHER THE PROPERTY OWNER OR VINTAGE REALTY COMPANY OR ITS AGENTS AND EMPLOYEES. PRICES AS STATED HEREIN AND PRODUCT AVAILABILITY IS SUBJECT TO CHANGE AND/OR SALE OR LEASE WITHOUT PRIOR NOTICE, AND ALL SIZES AND DIMENSIONS ARE SUBJECT TO CORRECTION. 9/2024