



CORPORATE REALTY

201 St. Charles Ave., Suite 3811, New Orleans, LA 70170
504.581.5005 | corp-realty.com



RETAIL SPACE | FOR LEASE

Edgewater Square Shopping Center

SEQ Pass Road and Eisenhower Drive

BILOXI, MS 39531

Jonathan Fawer
jfawer@corp-realty.com
504.581.5005



RETAIL CENTER UNDERGOING REDEVELOPMENT

SEQ Pass Road and Eisenhower Drive, Biloxi, Mississippi 39531

DESCRIPTION

Edgewater Square is a 125,373-sf shopping center that has a variety of different sized spaces for lease. The center is undergoing a redevelopment to include parking lot repaving and striping, elevation upgrades, and new pylon sign. Situated at the signalized intersection of Pass Road and Eisenhower Drive, the property offers excellent customer visibility and easy access.

The center is anchored by Harbor Freight Tools, Goodwill, and The Picklr, Biloxi's first indoor pickleball facility.

Pass Road is a major commercial thoroughfare that runs parallel to Beach Boulevard (also known as US-90), a primary corridor for the Mississippi Gulf Coast. The retail center is one block away from the Walmart Supercenter and Edgewater Mall, with anchor tenants Dillard's, JCPenney, Belk, and Books-A-Million. Edgewater Square abuts the railroad tracks that will serve as the route for the planned Gulf Coast Rail, connecting New Orleans and Mobile with stops along coastal Mississippi.

SPACE AVAILABLE

Anchor Spaces

Suite 1	15,000 sf	\$15.00/sf, NNN
Suite 2A	14,100 sf	\$12.00/sf, NNN

In-line Spaces

Suite 5	3,220 sf	\$17.00/sf, NNN
Suite 4	1,800 sf	\$17.00/sf, NNN

See site plan for location of available space



CORPORATE REALTY

A MEMBER OF
CHAINLINKS
RETAIL ADVISORS

Jonathan Fawer
jfawer@corp-realty.com
504.581.5005

EDGEWATER SQUARE

OVERVIEW & DEMOGRAPHICS



SIZE OF CENTER
125,373 sf



RENTAL RATES
\$ 12.00-\$ 17.00/sf, NNN



TRAFFIC COUNT
28,000 vpd - Pass Rd.
11,000 vpd - Eisenhower Dr.



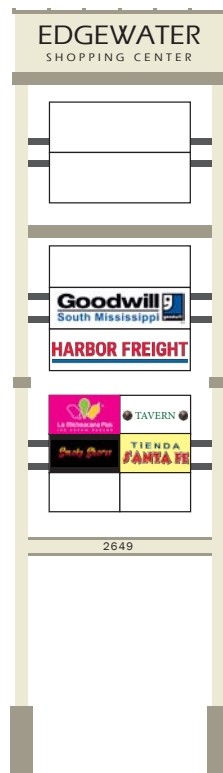
REDEVELOPMENT
center is undergoing
redevelopment



rendering of proposed improvements

RETAILERS IN THE AREA

- Walmart Supercenter
- Dillard's
- JCPenney
- Belk
- Books-A-Million



rendering of newly
installed pylon signage

DEMOGRAPHICS (EST. 2024)

	<u>1 mile</u>	<u>2 mile</u>	<u>3 mile</u>	<u>5 mile</u>
Population	8,336	18,737	33,564	64,739
Average HH Income	\$77,287	\$84,704	\$88,967	\$88,182
Median HH Income	\$63,219	\$65,245	\$69,374	\$67,825
Daytime Population	3,782	6,783	9,827	28,890



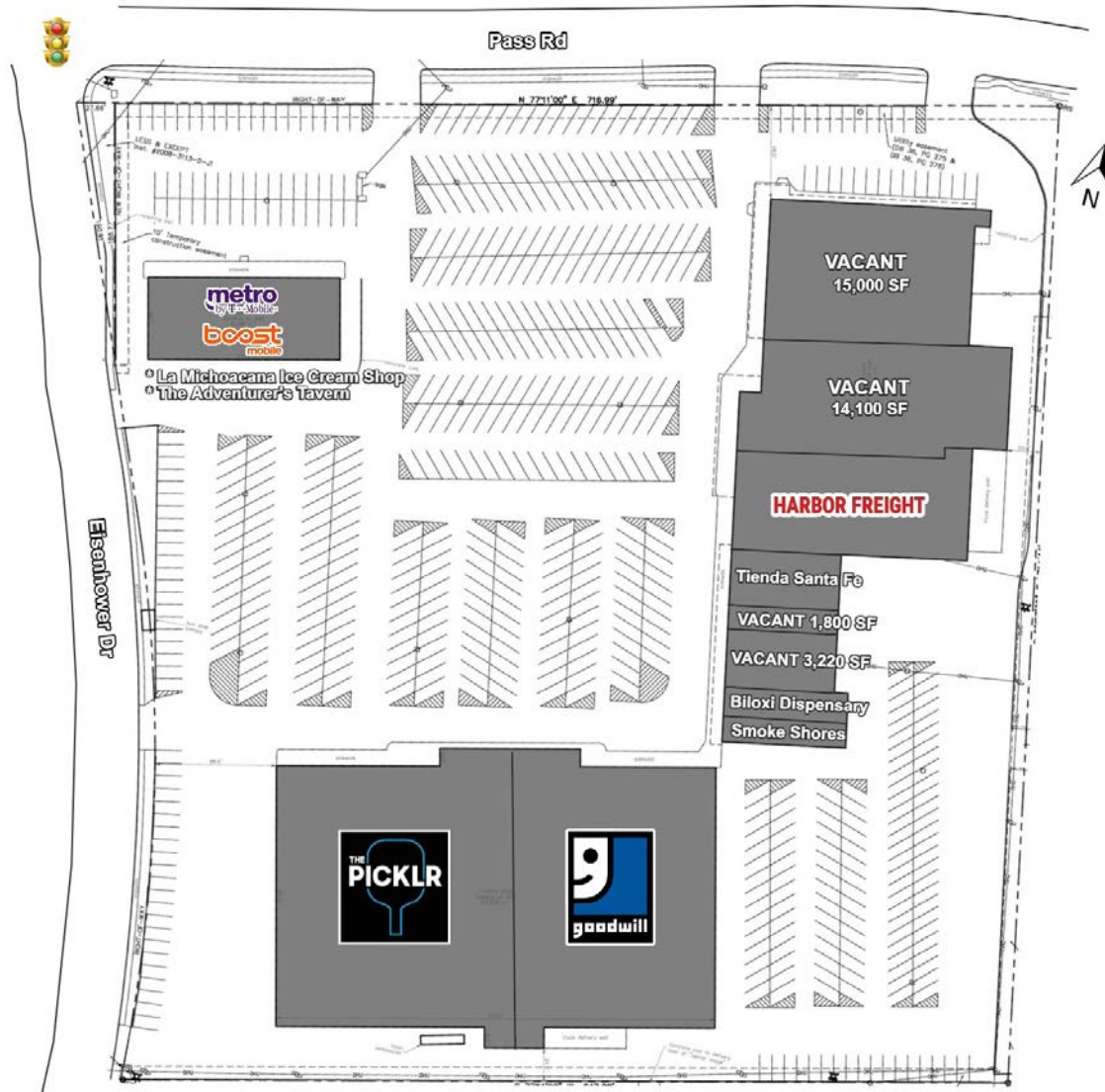
CORPORATE REALTY

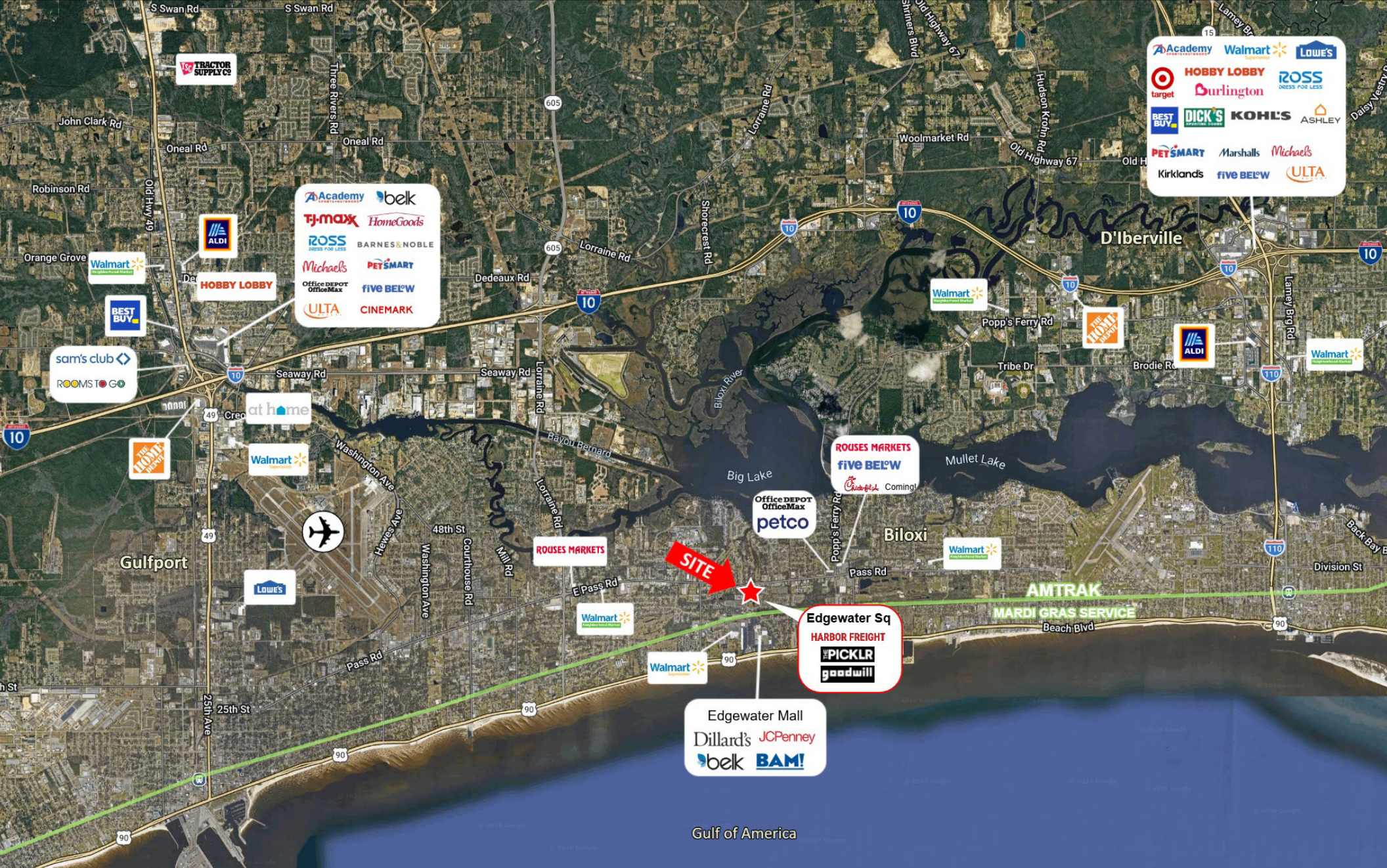
A MEMBER OF
CHAINLINKS
RETAIL ADVISORS

Jonathan Fawer
jfawer@corp-realty.com
504.581.5005

EDGEWATER SQUARE

SITE PLAN





EDGEWATER SQUARE





EDGEWATER SQUARE



CORPORATE REALTY

A MEMBER OF
CHAINLINKS
RETAIL ADVISORS

Jonathan Fawer
jfawer@corp-realty.com
504.581.5005

RETAIL SPACE | FOR LEASE

Edgewater Square Shopping Center

SEQ Pass Road and Eisenhower Drive, Biloxi, Mississippi 39531



Jonathan Fawer

jfawer@corp-realty.com
504.581.5005

CORPORATE REALTY

201 St. Charles Ave., Suite 3811, New Orleans, LA 70170
504.581.5005 | corp-realty.com

The information contained herein has been obtained from sources that we deem reliable. No representation or warranty is made as to the accuracy thereof, and it is submitted subject to errors, omissions, change of price, or other conditions, or withdrawal without notice. Licensed in Mississippi and Louisiana. 2/2026