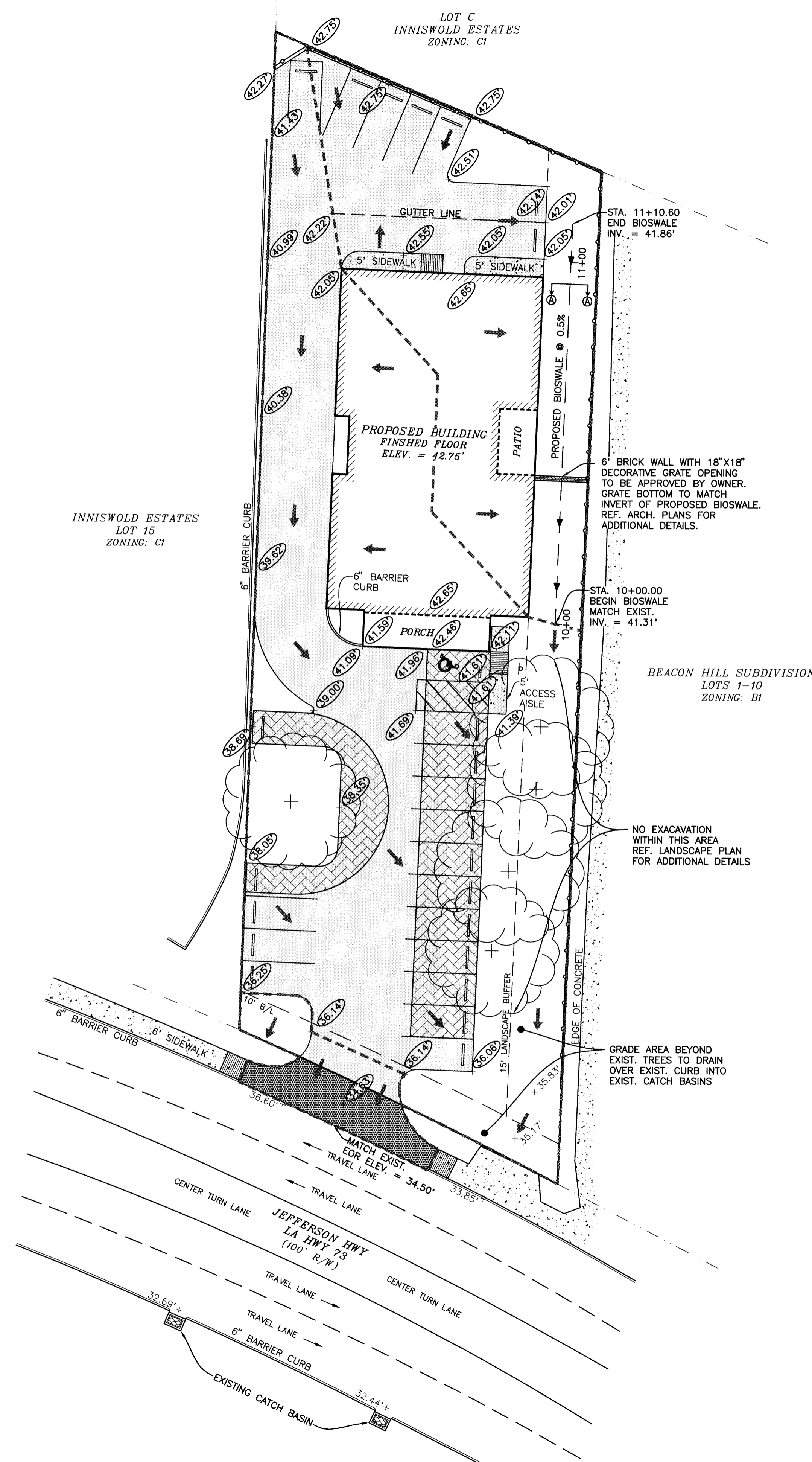


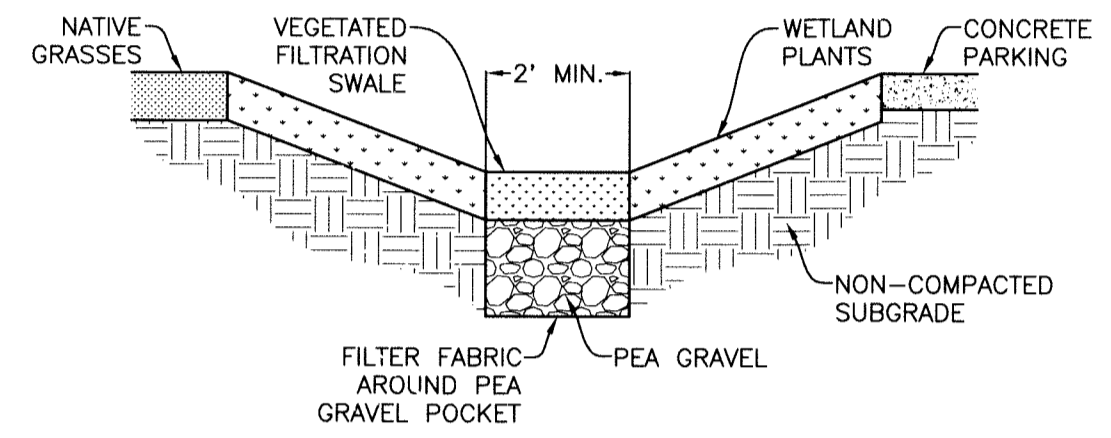
COPYRIGHT OF DRAWINGS
 UNLICENSED COPYING OF THESE PLANS VIOLATES U.S. COPYRIGHT LAWS AND IS SUBJECT TO LEGAL PROSECUTION. THESE DRAWINGS ARE THE PROPERTY OF ALVIN FAIRBURN AND ASSOCIATES, LLC AND ARE NOT TO BE REPRODUCED IN WHOLE OR PART IN ANY MANNER WITHOUT WRITTEN PERMISSION OF ALVIN FAIRBURN & ASSOCIATES.



Persuant to Louisiana Law, no person shall excavate or demolish in any street, highway, public place or servitude of any operator, or near the location of any underground utility or facility, or on the premises of a customer served by an underground utility or facility without having notified the Louisiana One Call system. Notification must be made to: **1-800-272-3020**

CONTRACTOR SHALL CONTACT CITY-PARISH TRAFFIC ENGINEERING DIVISION (CPTED) (225) 389-3246 FOR LOCATION/VERIFICATION OF EXISTING FIBER OPTIC LINES PRIOR TO BEGINNING ANY WORKING IN THE RIGHT-OF-WAY.

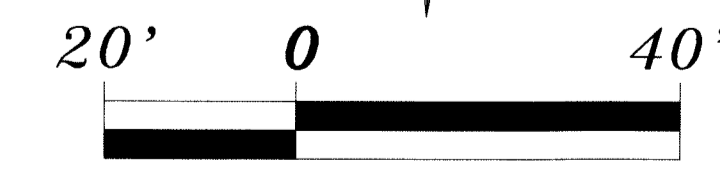
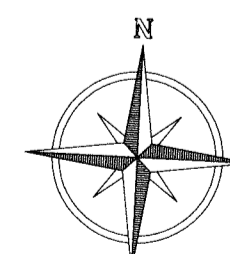
REFERENCE SHEET - FOR STANDARD NOTES & DETAILS



1 SECTION A-A
 C-3 SCALE: N.T.S.

LEGEND

- PROPERTY LINE
- BUILDING LINE
- LANDSCAPE BUFFER
- FENCE LINE
- BIOSWALE & FLOW ARROW
- DRAINAGE BREAKLINE
- PROPOSED DRAINAGE FLOW ARROW
- POST-DEVELOPMENT SPOT ELEVATION
- PRE-DEVELOPMENT SPOT ELEVATION
- CATCH BASIN
- HEAVY DUTY PAVEMENT (8"-4,000 PSI)
- STANDARD DUTY PAVEMENT (6"-4,000 PSI)
- PERVIOUS PAVING



SCALE: 1"=20'

GRADING PLAN

THIS DOCUMENT IS NOT TO BE USED FOR CONSTRUCTION, BIDDING, RECORDATION, CONVEYANCE, SALES, OR AS THE BASIS FOR THE ISSUANCE OF A PERMIT.

REVISIONS

EDWARD S. AYDELL, III
 Name
PRELIMINARY
 28124
 Reg. No.

ALVIN FAIRBURN & ASSOCIATES, LLC
 CONSULTING ENGINEERS - ARCHITECTS
 LAND SURVEYORS - DESIGNERS
 LAND DEVELOPMENT CONSULTANTS
 1289 DEL ESTE AVENUE
 DENHAM SPRINGS, LOUISIANA 70727-1173 (225) 665-1515

CONVENIENT CARE
A COMMERCIAL DEVELOPMENT
 LOCATED IN SECTION 70, T7S-R1E, G.L.D.
 EAST BATON ROUGE PARISH, LOUISIANA

DATE MAY, 2011
JOB NO. A110156
SHEET NO. C-3