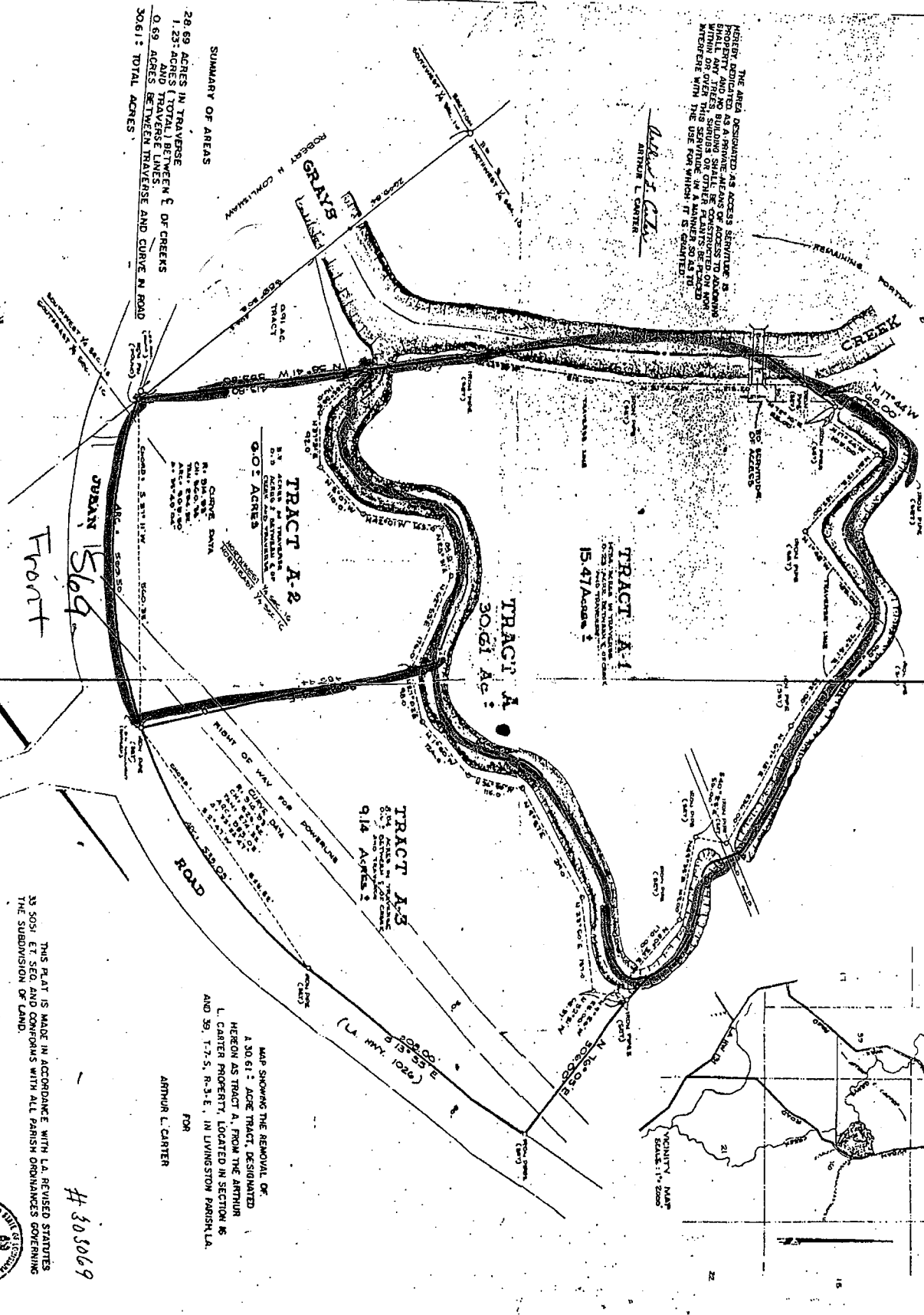


THE AREA DESIGNATED AS ACCESS STRUCTURE IS HEREBY DESIGNATED AS A PRIVATE MEANS OF ACCESS TO PROPERTY AND NO PUBLIC MEANS OF ACCESS SHALL BE CONSTRUCTED WITHIN OR NEAR THE ACCESS STRUCTURE. THIS SEPARATE IN A PARISH BE PLACED IN THE USE FOR WHICH IT IS DESIGNATED.

Arthur L. Carter
ARTHUR L. CARTER

*REVISED (4/1/75) TO SHOW RESUBDIVISION OF TRACT A



SUMMARY OF AREAS
28.69 ACRES IN TRAVERSE
1.23 ACRES (TOTAL) BETWEEN C OF CREEKS
AND TRAVERSE LINES
0.99 ACRES BETWEEN TRAVERSE AND CURVE IN ROAD
30.61 TOTAL ACRES

BATON ROUGE, LA
17 JANUARY 1975
APRIL 1975 (REVISED)

THIS PLAN IS MADE IN ACCORDANCE WITH L.A. REVISED STATUTES 33:501 ET SEQ. AND CONFORMS WITH ALL PARISH ORDINANCES GOVERNING THE SUBDIVISION OF LAND.

MAP SHOWING THE REMOVAL OF
A 30.61 ACRE TRACT, DESIGNATED
HEREON AS TRACT A, FROM THE ARTHUR
L. CARTER PROPERTY, LOCATED IN SECTION 16
AND 39, T-7-S, R-3-E, IN LIVINGSTON PARISH, LA.
FOR
ARTHUR L. CARTER

John Craft
JOHN CRAFT, CIVIL ENGINEER



305669

02