

## FOR LEASE COMPLETELY RENOVATED

### EXECUTIVE SUMMARY

This 4-story, Class B office building represents true convenience in a working environment. The Bank of Louisiana Building is centrally located in Metairie's Central Business District. It is positioned just blocks away from Lakeside Shopping Center and the Causeway Bridge, offering easy access to the Northshore and Interstate 10.

### AVAILABILITY

- Suite 205: 1,210 RSF with Private Balcony
- Suite 305: 1,014 RSF
- Suite 335: 1,127 RSF
- Suite 340: 2,385 RSF
- Suite 400: Up to 19,747 RSF (Whole Floor Available)
- Suite 420: 2,268 RSF

### BUILDING INFO

- GBA: 53,452 RSF
- Year Built: 1980
- Renovated: 2022
- Stories: 4
- Ample Parking
- Elevators: 2

### RENTAL RATE

- \$18 - \$21 PSF per Annum





SUMMARY

METAIRIE CBD

1<sup>ST</sup> FLOOR

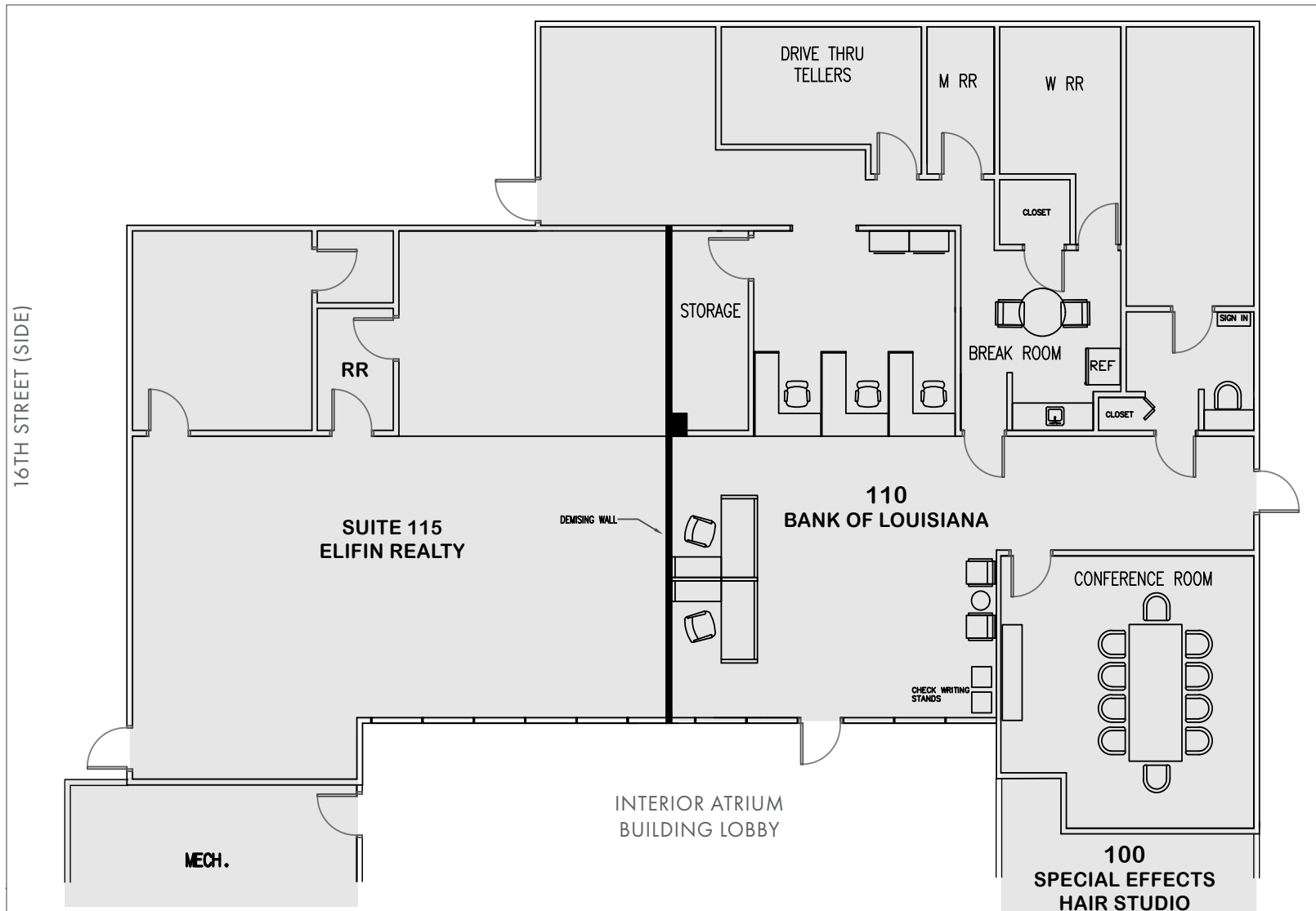
2<sup>ND</sup> FLOOR

3<sup>RD</sup> FLOOR

4<sup>TH</sup> FLOOR

PROPERTY  
PHOTOS







SUMMARY

METAIRIE CBD

1<sup>ST</sup> FLOOR

2<sup>ND</sup> FLOOR

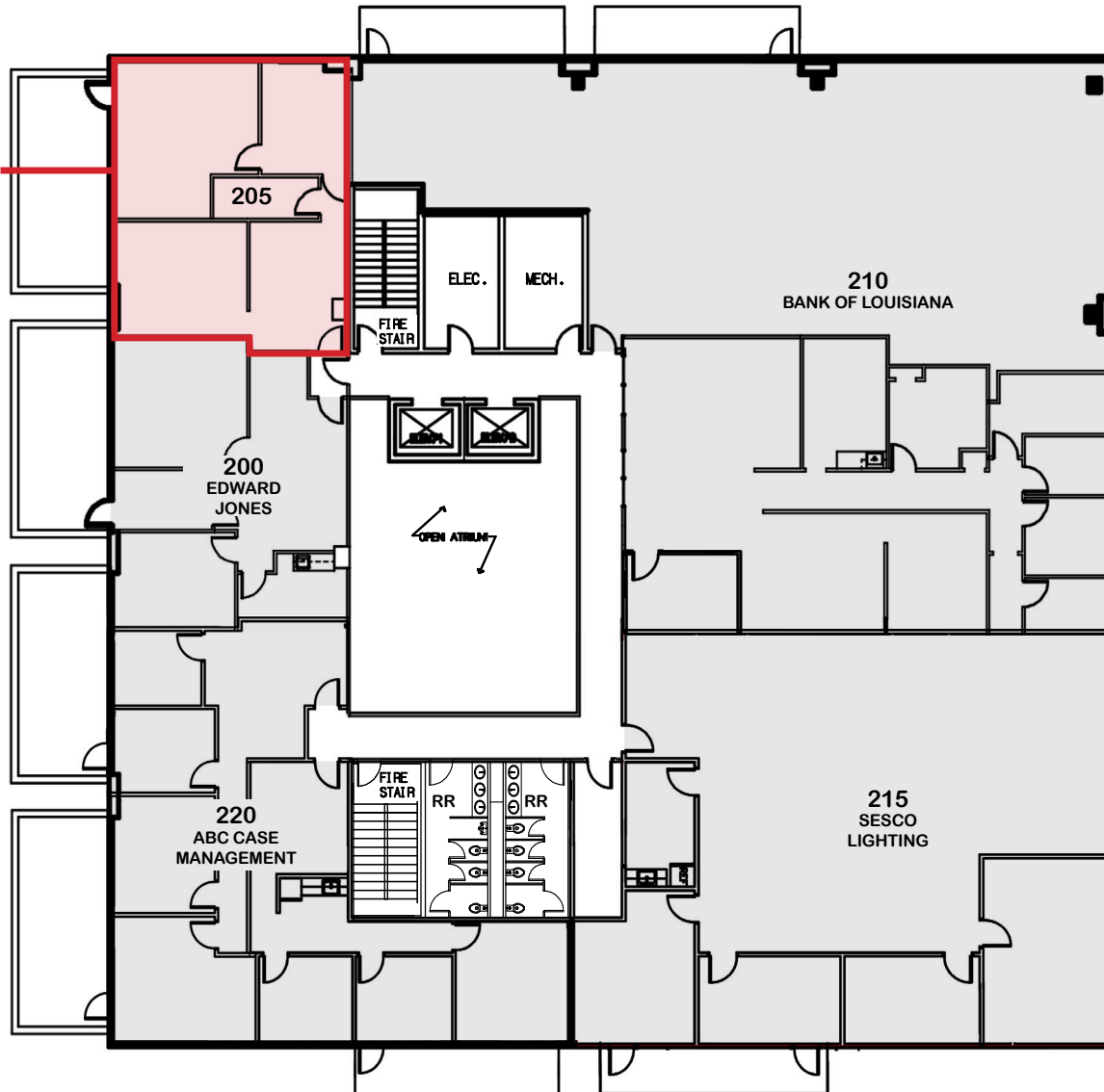
3<sup>RD</sup> FLOOR

4<sup>TH</sup> FLOOR

PROPERTY  
PHOTOS

SUITE 205  
AVAILABLE  
1,210 RSF

SEVERN AVE

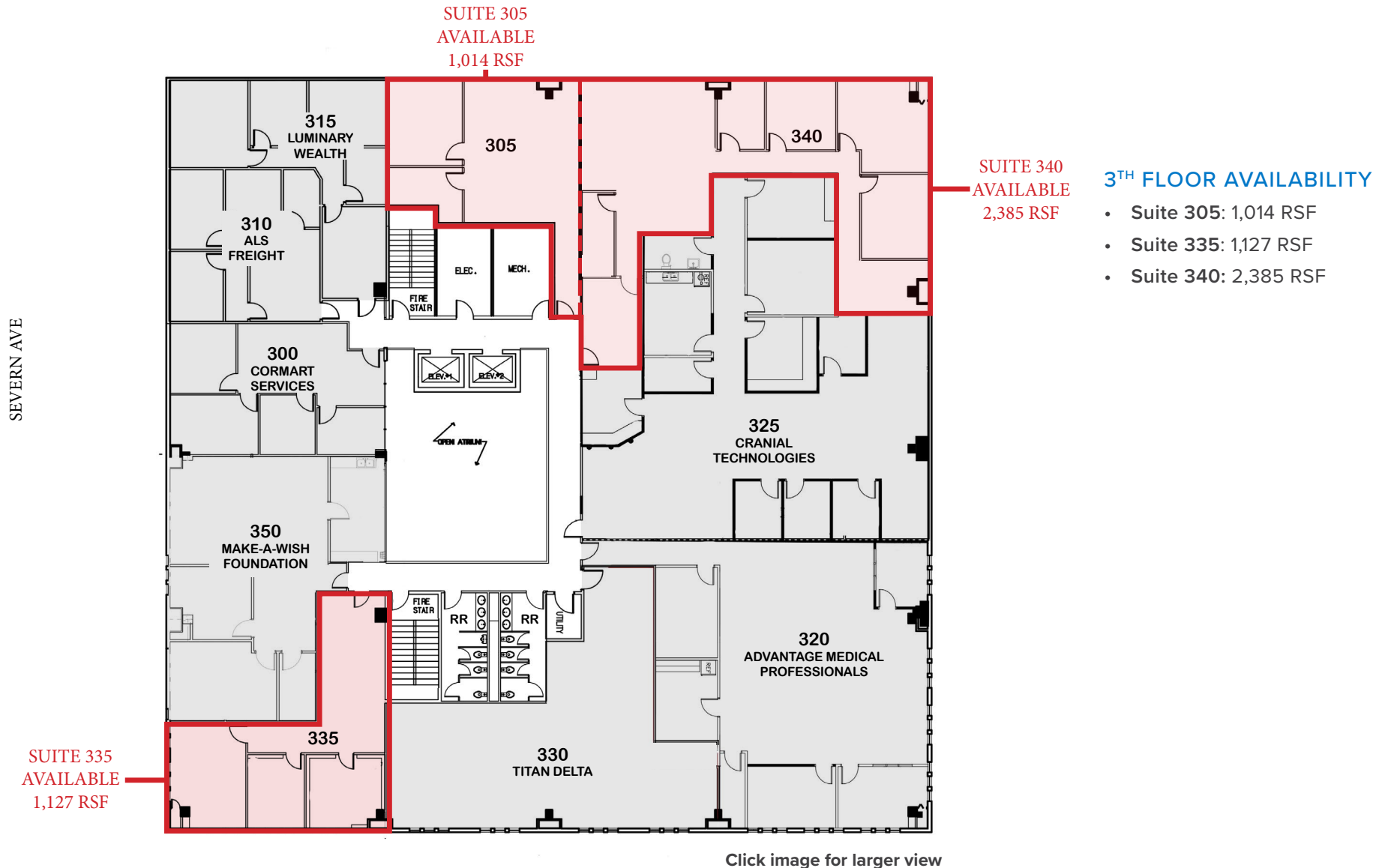


## 2<sup>ND</sup> FLOOR AVAILABILITY

- Suite 205: 1,210 RSF

Click image for larger view

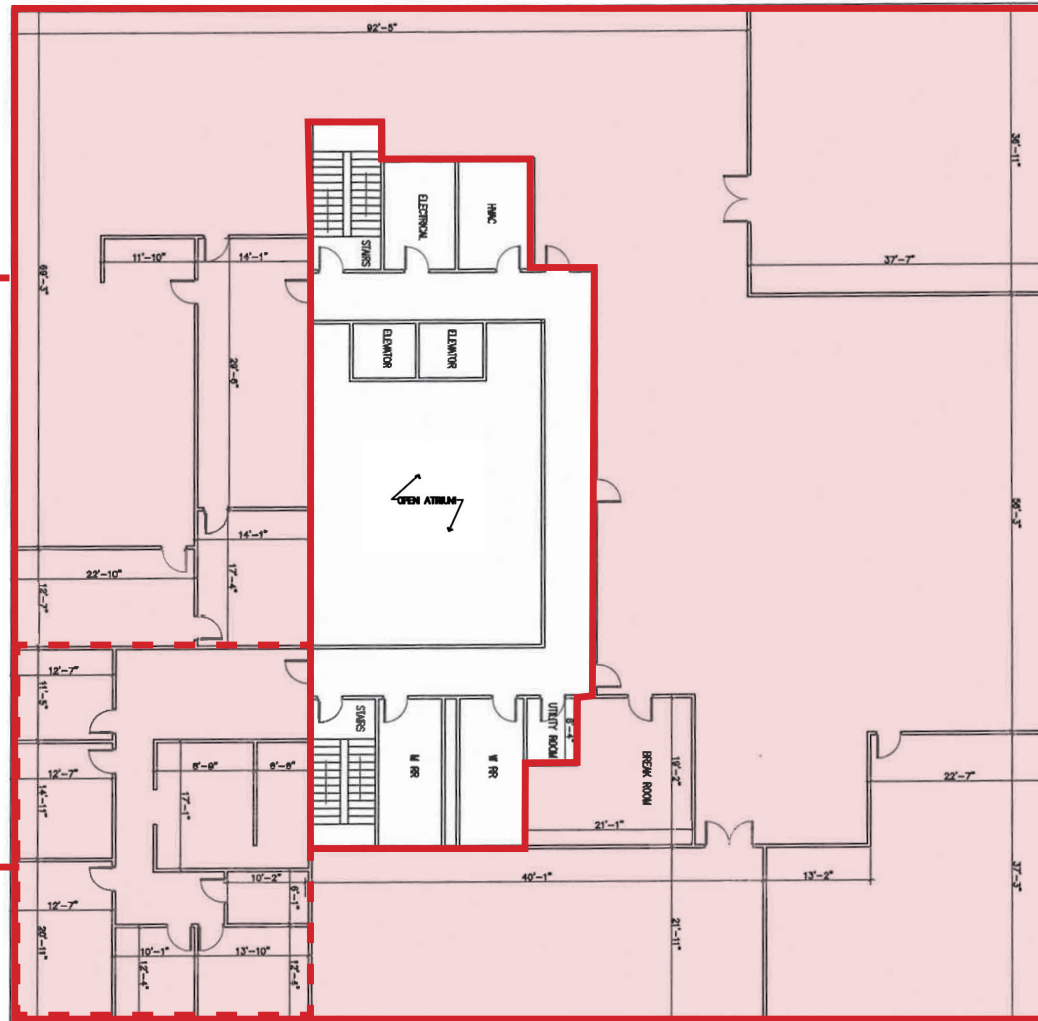




SUITE 400  
AVAILABLE  
19,747 RSF  
ENTIRE FLOOR

SEVERN AVE

SUITE 420  
AVAILABLE  
2,268 RSF



## 4<sup>TH</sup> FLOOR AVAILABILITY

- Suite 400: Up to 19,747 RSF  
Whole Floor Available
- Suite 420: 2,268 RSF

Click image for larger view



SUMMARY

METAIRIE CBD

1<sup>ST</sup> FLOOR

2<sup>ND</sup> FLOOR

3<sup>RD</sup> FLOOR

4<sup>TH</sup> FLOOR

PROPERTY  
PHOTOS

BUILDING LOBBY



MODEL SUITE



MODEL SUITE



MAIN BUILDING ENTRANCE



RENOVATED AVAILABLE SUITE



RENOVATED AVAILABLE SUITE

