



OFFICE BUILDING FOR LEASE

5800 One Perkins

5800 One Perkins Place Dr, Baton Rouge, LA 70808

Presented By:

Andrew D'Ostilio, CCIM

Commercial Sales and Leasing

225.678.8851

andrewdos@rampartcre.com



PROPERTY DESCRIPTION

+/-1,800 - 3,600 SF of office space located in the heart of Baton Rouge within the One Perkins Place Office Park. Great centralized location on Perkins Road near Essen Lane, Kenilworth Parkway, and the Baton Rouge Medical District.

PROPERTY HIGHLIGHTS

- Hays Town-designed office building
- Centrally located in Baton Rouge near the corner of Perkins Road and Kenilworth Parkway within the Baton Rouge Medical District
- Two-story office building with flexible leasing options: approximately 1,800 SF per floor or 3,600 SF for the entire building
- Ground Floor: Four (4) Offices, Two (2) Bathrooms, Reception, Conference Room, Kitchenette, ample storage
- Ground Floor: Four (4) Offices, Two (2) Bathrooms, Reception, Conference Room, Kitchenette, ample storage

OFFERING SUMMARY

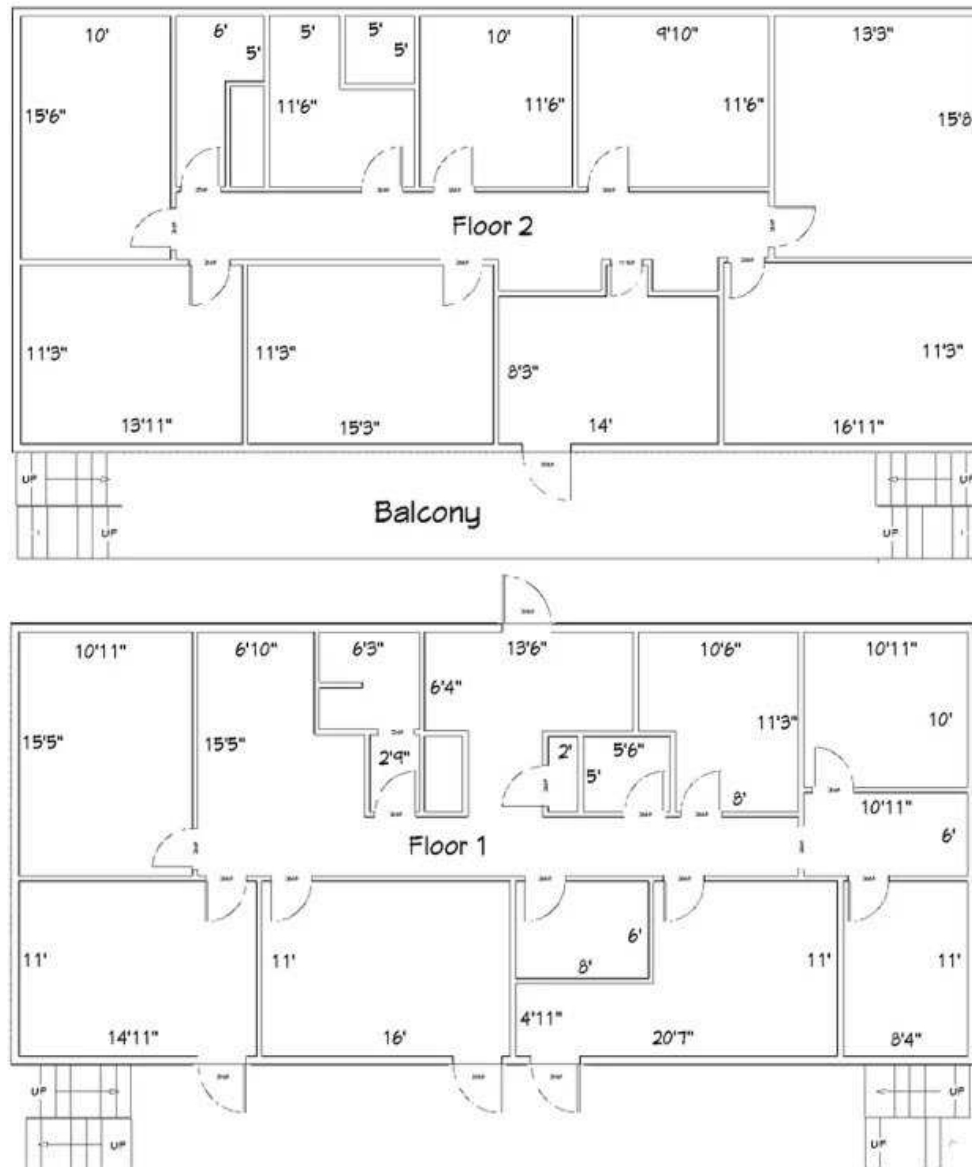
Lease Rate:	\$14 SF/yr (NNN)
Available SF:	1,800-3,600 SF
Building Size:	3,600 SF

SPACES	LEASE RATE	SPACE SIZE
Ground Floor	\$14.00 SF/yr	1,800 SF
Second Floor	\$14.00 SF/yr	1,800 SF

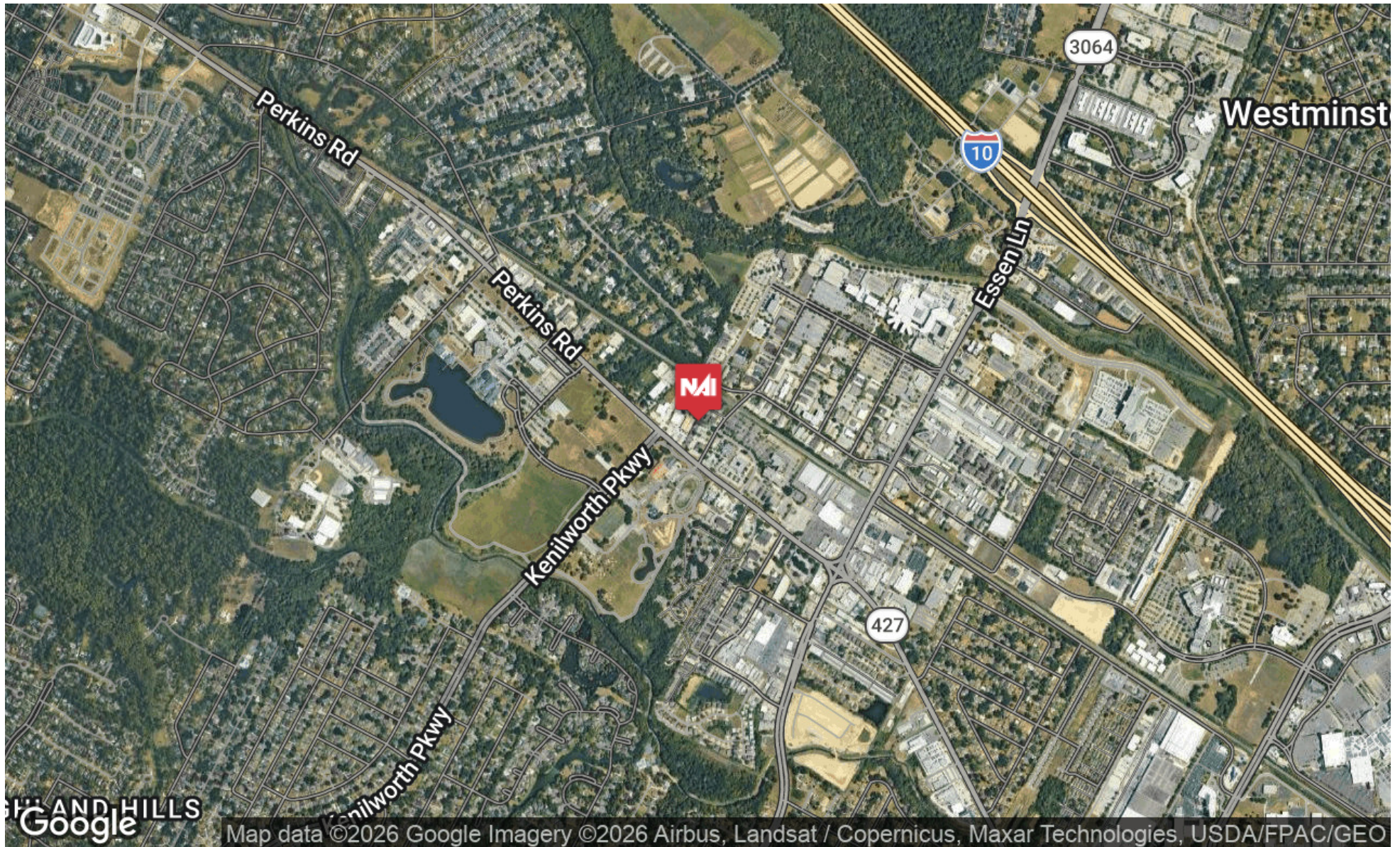
INFORMATION SUBJECT TO VERIFICATION & NO LIABILITY FOR ERRORS & OMISSION ASSUMED. // LICENSED IN LOUISIANA



INFORMATION SUBJECT TO VERIFICATION & NO LIABILITY FOR ERRORS & OMISSION ASSUMED. // LICENSED IN LOUISIANA



INFORMATION SUBJECT TO VERIFICATION & NO LIABILITY FOR ERRORS & OMISSION ASSUMED. // LICENSED IN LOUISIANA



INFORMATION SUBJECT TO VERIFICATION & NO LIABILITY FOR ERRORS & OMISSION ASSUMED. // LICENSED IN LOUISIANA



For More Information:

Andrew D'Ostilio, CCIM
Commercial Sales and Leasing
225.678.8851
andrewdos@rampartcre.com

NAIRampart

1700 City Farm Drive
Baton Rouge, LA 70806
www.rampartcre.com