



2023

Cost of Living COMPARISON Guide



985.792.4385



gsres.com



109 New Camellia Blvd
Covington, LA 70433





DESTINATION

LOUISIANA

GULF STATES REAL ESTATE SERVICES

— *Index*

Table of Contents

Sections

Cost of Living Index	02
National Office Report	04
Major Cities	07
About Louisiana	27
St. Tammany Parish	38
Covington, Louisiana	51



COST OF LIVING COMPARISON GUIDE

CITIES

LAKE PONCHARTRAIN

SAN FRANCISCO

LOS ANGELES

NEW YORK

WASHINGTON DC

BOSTON

CHICAGO

DETROIT

SEATTLE

PHILADELPHIA

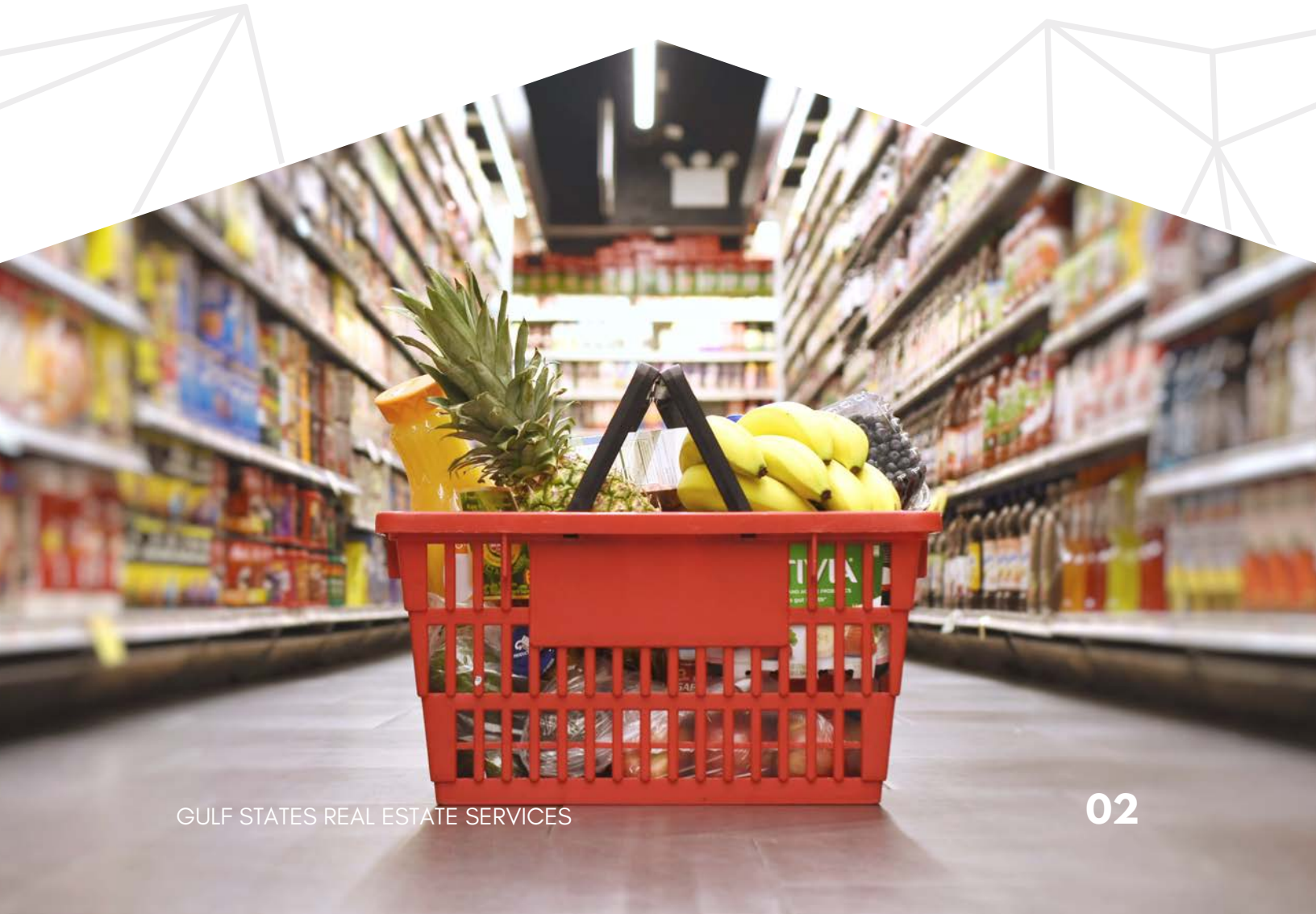
PHOENIX



WHAT IS THE COST OF LIVING INDEX?

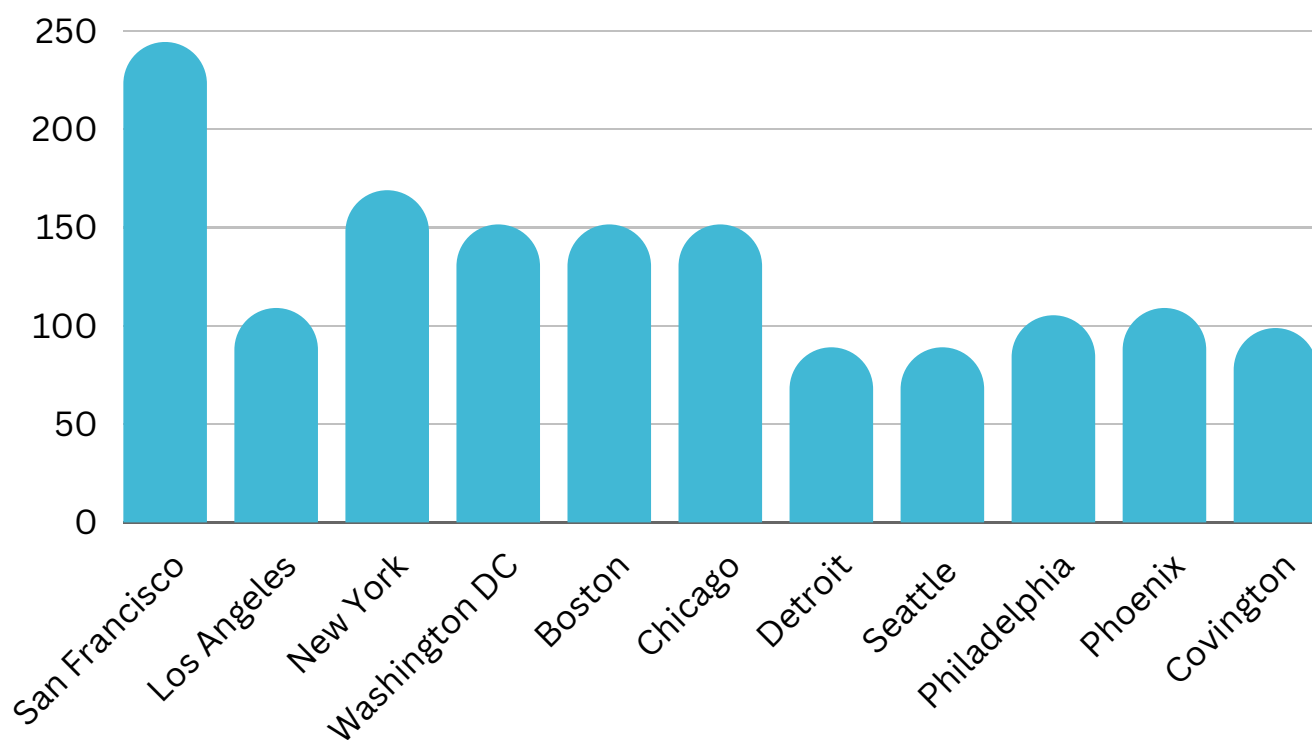
The cost of living index is a statistical tool used to measure the relative cost of goods and services in different geographic locations. It is typically calculated by comparing the prices of a basket of essential goods and services, such as food, housing, transportation, and healthcare, in different cities or regions. The cost of living index provides a useful way to compare the overall affordability of

living in different locations, and it is often used by individuals, businesses, and policymakers to inform decisions about where to live, work, or invest. The index is typically expressed as a percentage, with 100 representing the average cost of living in a particular location. A cost of living index above 100 indicates a higher cost of living than the national average, while an index below 100 indicates a lower cost of living





COST OF LIVING INDEX BY CITY



A modern office interior featuring a high ceiling with exposed wooden beams and black metal brackets. The walls are made of red brick. In the foreground, there are several desks with black metal frames and casters. Some desks have computers and office chairs. A large potted plant is visible in the background. The floor is made of light-colored wood. The overall atmosphere is industrial and contemporary.

COST OF LIVING
COMPARISON GUIDE

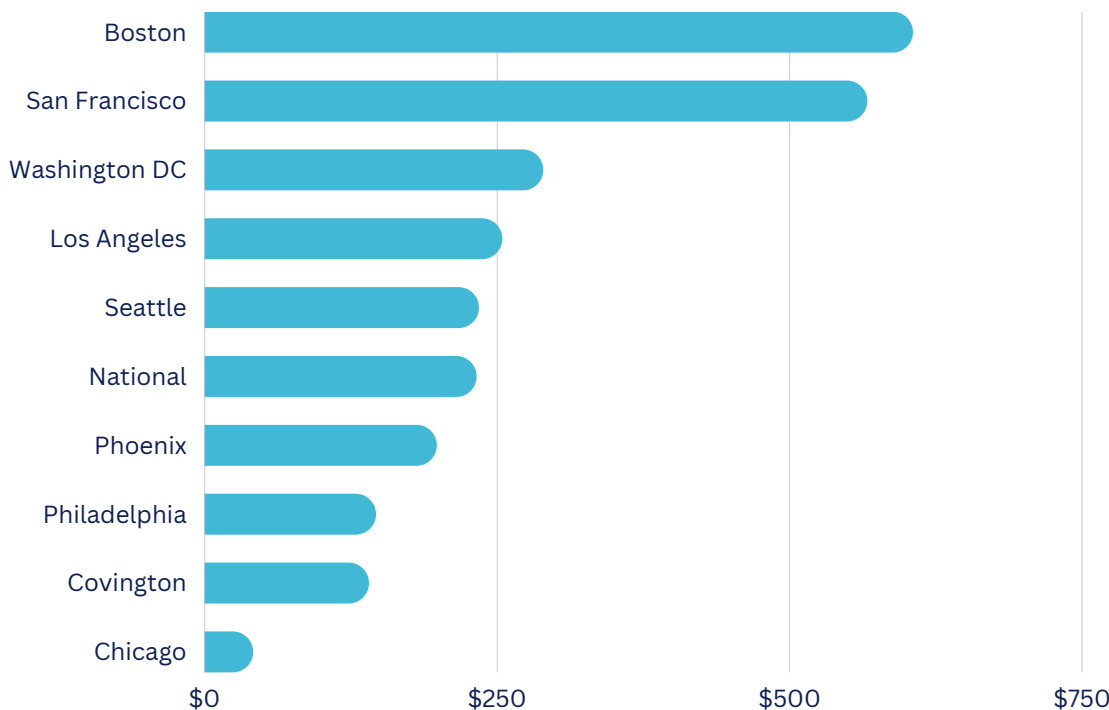
NATIONAL OFFICE REPORT

Gulf States Real Estate Services

March 2023 Highlights

- The average U.S. office listing rate stood at \$38.28, down 1.6% year-over-year
- Up 70 basis points year-over-year, the national office vacancy rate rested at 16.5%
- Under-construction office space totaled 123.5 million square feet at the end of the month, with another 271.3 million square feet in the planning stages
- San Francisco recorded the largest sales volume in the West with \$308 million in closed deals
- Asking rents in Chicago stood at \$28.23 per square foot, \$10.05 below the national rate
- Houston, Atlanta and Austin posted the highest vacancy rates, all north of 20%
- Manhattan recorded the highest average sale price at \$1,507 per square foot

SALES PRICE PER SQUARE FOOT



West Regional Highlights

Continuing with the trend of the tech sector's downturn, cities with well-established tech hubs in the Western region have been experiencing a rise in vacancy rates. In February, San Francisco witnessed the highest vacancy rate in the region and the fifth highest nationwide, standing at 19.15%, which is a 2.25% increase from the previous year. The steepest increases in office vacancy rates, however, were observed in the Bay Area and Seattle, recording a rise of 2.77% and 3.26%, respectively.

Market	Feb-23 Listing Rate	YTD Sales Prices PSF	Total Vacancy
San Francisco	\$67.25	\$566	19.2%
Los Angeles	\$42.70	\$254	14.6%
Seattle	\$38.63	\$234	18.2%
National	\$38.28	\$232	16.5%
Phoenix	\$27.38	\$198	17.1%
Covington	\$21.31	\$140	5.3%

Midwestern Markets

Chicago and Minneapolis - St. Paul have consistently displayed sluggish office fundamentals in comparison to other top 25 markets nationwide. Both cities have been witnessing a surge in vacancy rates and listing rates, lagging behind the national average. As of February, the asking rent for office space in Chicago was \$28.23 per square foot, which is \$10.05 lower than the national average.

Market	Feb-23 Listing Rate	YTD Sales Prices PSF	Total Vacancy
Chicago	\$28.23	\$41	19.2%
Twin Cities	\$26.05	\$203	15.5%

Northeastern Markets

According to a recent U.S. office market report, Manhattan has maintained its position as the market with the highest asking rent in the country, reaching \$76.04 per square foot in February, a 0.39% increase from the previous month. This is significantly higher than the second-highest rate of \$67.25 in San Francisco and the third-highest rate of \$57.10 per square foot in the Bay Area. However, most Northeast markets reported asking rates below the national average of \$38.28, with Philadelphia having the lowest at \$31.24 per square foot. Meanwhile, office vacancy rates in the top Northeast markets mostly remained in the teens, with Brooklyn experiencing the highest rate at 18.6%. Manhattan recorded the fastest growth in vacancy rates in the region, rising by 2.87%.

Market	Feb-23 Listing Rate	YTD Sales Prices PSF	Total Vacancy
Manhattan	\$76.04	\$1,507	16%
Brooklyn	\$44.22	\$0	18.6%
Boston	\$35.77	\$605	9.8%
New Jersey	\$33.63	\$142	17%
Philadelphia	\$31.24	\$146	14.3%
Covington	\$21.31	\$140	5.3%



COST OF LIVING
COMPARISON GUIDE

MAJOR CITIES

Gulf States Real Estate Services

SAN FRANCISCO

INFORMATION FROM:


Current City	New City	Pre-Tax Household Income
San Francisco, CA	Covington / Slidell	\$50,000



**THE COST OF LIVING IS 49% LOWER IN
SLIDELL-ST. TAMMANY PARISH, LA**

01

To maintain your standard of living in Slidell-St. Tammany Parish, LA, you'll need a household income of:

\$25,398

02

San Francisco, CA

Slidell-St. Tammany Parish, LA

Median 2-bedroom apartment rent \$3,709

\$1,153

Median home price (3BR, 2BA) \$1,473,216

\$411,438

HOUSING COSTS ARE 22% LOWER IN THE SLIDELL AREA

03

**Transportation
Costs**

Gas (per gallon)

San Francisco, CA

\$4.90

Slidell-St. Tammany Parish, LA

\$2.90

SAN FRANCISCO

INFORMATION FROM:



**SAVE MONEY AND
SEE MORE**

04 Food Costs 5% lower food costs in Slidell

Food	San Francisco, CA	Slidell
Bread	\$4.94	\$3.80
Dozen Eggs	\$3.68	\$2.17
Gallon of milk	\$3.27	\$2.45
12-inch Pizza Hut pizza	\$14.19	\$9.54
McDonalds Quarter-Pounder with cheese	\$6.07	\$5.48

05 Entertainment Costs

**19% LOWER IN
SLIDELL**

06 Healthcare Costs

San Francisco, CA

Cost of a doctor's visit \$169.22

Cost of a dentist's visit \$143.99

Slidell-St. Tammany Parish, LA

\$117.38

\$98.26

LOS ANGELES

INFORMATION FROM:


Current City	New City	Pre-Tax Household Income
Los Angeles	Covington / Slidell	\$50,000



**THE COST OF LIVING IS 38% LOWER IN
SLIDELL-ST. TAMMANY PARISH, LA**

01

To maintain your standard of living in Slidell-St. Tammany Parish, LA, you'll need a household income of:

\$31,185

02

Los Angeles-Long Beach, CA

Slidell-St. Tammany Parish, LA

Median 2-bedroom apartment rent \$3,066

\$1,153

Median home price (3BR, 2BA) \$1,037,503

\$411,438

HOUSING COSTS ARE 61% LOWER IN THE SLIDELL AREA

03

**Transportation
Costs**

Gas (per gallon)

Los Angeles-Long Beach, CA

\$4.95

Slidell-St. Tammany Parish, LA

\$2.90

LOS ANGELES

INFORMATION FROM:



**SAVE MONEY AND
SEE MORE**

04 Food Costs 15% lower food costs in Slidell

Food	Los Angeles	Slidell
Bread	\$4.03	\$3.80
Dozen Eggs	\$3.49	\$2.17
Gallon of milk	\$2.60	\$2.45
12-inch Pizza Hut pizza	\$12.45	\$9.54
McDonalds Quarter-Pounder with cheese	\$6.17	\$5.48

05 Entertainment Costs

**14% LOWER IN
SLIDELL**

06 Healthcare Costs

Los Angeles-Long Beach, CA

Slidell-St. Tammany Parish, LA

Cost of a doctor's visit

\$128.75

\$117.38

Cost of a dentist's visit

\$124.09

\$98.26

NEW YORK

INFORMATION FROM:


Current City	New City	Pre-Tax Household Income
New York	Covington / Slidell	\$50,000



**THE COST OF LIVING IS 61% LOWER IN
SLIDELL-ST. TAMMANY PARISH, LA**

01

To maintain your standard of living in Slidell-St. Tammany Parish, LA, you'll need a household income of:

\$19,511

02

New York (Manhattan), NY

Slidell-St. Tammany Parish, LA

Median 2-bedroom apartment rent \$4,645

\$1,153

Median home price (3BR, 2BA) \$2,388,421

\$411,438

HOUSING COSTS ARE 81% LOWER IN THE SLIDELL AREA

03

**Transportation
Costs**

Gas (per gallon)

New York (Manhattan), NY

\$3.75

Slidell-St. Tammany Parish, LA

\$2.90

NEW YORK

INFORMATION FROM:



**SAVE MONEY AND
SEE MORE**

04 Food Costs 32% lower food costs in Slidell

Food	New York (Manhattan), NY	Slidell
Bread	\$4.19	\$3.80
Dozen Eggs	\$3.13	\$2.17
Gallon of milk	\$3.13	\$2.45
12-inch Pizza Hut pizza	\$13.13	\$9.54
McDonalds Quarter-Pounder with cheese	\$6.43	\$5.48

05 Entertainment Costs

**27% LOWER IN
SLIDELL**

06 Healthcare Costs

New York (Manhattan), NY

Slidell-St. Tammany Parish, LA

Cost of a doctor's visit

\$117.70

\$117.38

Cost of a dentist's visit

\$133.24

\$98.26

WASHINGTON DC

INFORMATION FROM:


Current City	New City	Pre-Tax Household Income
Washington DC	Covington / Slidell	\$50,000



**THE COST OF LIVING IS 40% LOWER IN
SLIDELL-ST. TAMMANY PARISH, LA**

01

To maintain your standard of living in Slidell-St. Tammany Parish, LA, you'll need a household income of:

\$30,221

02

Washington-Arlington-Alexandria, DC-VA

Slidell-St. Tammany Parish, LA

Median 2-bedroom apartment rent \$3,199

\$1,153

Median home price (3BR, 2BA) \$1,130,198

\$411,438

HOUSING COSTS ARE 64% LOWER IN THE SLIDELL AREA

03

**Transportation
Costs**

Gas (per gallon)

Washington-Arlington-Alexandria, DC-VA

\$3.52

Slidell-St. Tammany Parish, LA

\$2.90

WASHINGTON DC

INFORMATION FROM:



**SAVE MONEY AND
SEE MORE**

04 Food Costs 15% lower food costs in Slidell

Food	Washington-Arlington-Alexandria, DC-VA	Slidell
Bread	\$3.86	\$3.80
Dozen Eggs	\$2.43	\$2.17
Gallon of milk	\$2.78	\$2.45
12-inch Pizza Hut pizza	\$11.99	\$9.54
McDonalds Quarter-Pounder with cheese	\$6.37	\$5.48

05 Entertainment Costs **16% LOWER IN SLIDELL**

06 Healthcare Costs

Washington-Arlington-Alexandria, DC-VA

Slidell-St. Tammany Parish, LA

Cost of a doctor's visit \$124.64

\$117.38

Cost of a dentist's visit \$102.50

\$98.26

BOSTON

INFORMATION FROM:


Current City	New City	Pre-Tax Household Income
Boston, MA	Covington / Slidell	\$50,000



**THE COST OF LIVING IS 58% LOWER IN
SLIDELL-ST. TAMMANY PARISH, LA**

01

To maintain your standard of living in Slidell-St. Tammany Parish, LA, you'll need a household income of:

\$45,576

02

Boston, MA

Slidell-St. Tammany Parish, LA

Median 2-bedroom apartment rent \$3,609

\$1,153

Median home price (3BR, 2BA) \$877,863

\$411,438

HOUSING COSTS ARE 22% LOWER IN THE SLIDELL AREA

03

**Transportation
Costs**

Gas (per gallon)

Boston, MA

\$3.75

Slidell-St. Tammany Parish, LA

\$2.90

BOSTON

INFORMATION FROM:



**SAVE MONEY AND
SEE MORE**

04 Food Costs 17% lower food costs in Slidell

Food	Boston, MA	Slidell
Bread	\$4.65	\$3.80
Dozen Eggs	\$2.64	\$2.17
Gallon of milk	\$2.93	\$2.45
12-inch Pizza Hut pizza	\$12.74	\$9.54
McDonalds Quarter-Pounder with cheese	\$6.87	\$5.48

05 Entertainment Costs

**19% LOWER IN
SLIDELL**

06 Healthcare Costs

Boston, MA

Cost of a doctor's visit \$172.88

Cost of a dentist's visit \$135.88

Slidell-St. Tammany Parish, LA

\$117.38

\$98.26

CHICAGO

INFORMATION FROM:



Current City	New City	Pre-Tax Household Income
Chicago	Covington / Slidell	\$50,000



**THE COST OF LIVING IS 21% LOWER IN
SLIDELL-ST. TAMMANY PARISH, LA**

01

To maintain your standard of living in Slidell-St. Tammany Parish, LA, you'll need a household income of:

\$39,262

02

Chicago, IL

Slidell-St. Tammany Parish, LA

Median 2-bedroom apartment rent \$2,754

\$1,153

Median home price (3BR, 2BA) \$556,350

\$411,438

HOUSING COSTS ARE 39% LOWER IN THE SLIDELL AREA

03

**Transportation
Costs**

Gas (per gallon)

Chicago, IL

\$3.85

Slidell-St. Tammany Parish, LA

\$2.90

CHICAGO

INFORMATION FROM:



**SAVE MONEY AND
SEE MORE**

04 Food Costs 11% lower food costs in Slidell

Food	Chicago, IL	Slidell
Bread	\$3.74	\$3.80
Dozen Eggs	\$2.35	\$2.17
Gallon of milk	\$2.34	\$2.45
12-inch Pizza Hut pizza	\$12.50	\$9.54
McDonalds Quarter-Pounder with cheese	\$5.58	\$5.48

05 Entertainment Costs

**8% LOWER IN
SLIDELL**

06 Healthcare Costs

Chicago, IL

Cost of a doctor's visit

\$150.50

Cost of a dentist's visit

\$123.38

Slidell-St. Tammany Parish, LA

\$117.38

\$98.26

DETROIT

INFORMATION FROM:


Current City	New City	Pre-Tax Household Income
Detroit, MI	Covington / Slidell	\$50,000



**THE COST OF LIVING IS 8% LOWER IN
SLIDELL-ST. TAMMANY PARISH, LA**

01

To maintain your standard of living in Slidell-St. Tammany Parish, LA, you'll need a household income of:

\$45,837

02

Detroit, MI

Slidell-St. Tammany Parish, LA

Median 2-bedroom apartment rent \$1,411

\$1,153

Median home price (3BR, 2BA) \$448,490

\$411,438

HOUSING COSTS ARE 22% LOWER IN THE SLIDELL AREA

03

**Transportation
Costs**

Gas (per gallon)

Detroit, MI

\$3.42

Slidell-St. Tammany Parish, LA

\$2.90

DETROIT

INFORMATION FROM:



**SAVE MONEY AND
SEE MORE**

04 Food Costs 7% lower food costs in Slidell

Food	Detroit, MI	Slidell
Bread	\$4.10	\$3.80
Dozen Eggs	\$1.81	\$2.17
Gallon of milk	\$1.92	\$2.45
12-inch Pizza Hut pizza	\$10.99	\$9.54
McDonalds Quarter-Pounder with cheese	\$5.08	\$5.48

05 Entertainment Costs

**7% LOWER IN
SLIDELL**

06 Healthcare Costs

	Detroit, MI
Cost of a doctor's visit	\$114.59
Cost of a dentist's visit	\$109.41

	Slidell-St. Tammany Parish, LA
	\$117.38
	\$98.26

SEATTLE

INFORMATION FROM:


Current City	New City	Pre-Tax Household Income
Seattle, WA	Covington / Slidell	\$50,000



**THE COST OF LIVING IS 38% LOWER IN
SLIDELL-ST. TAMMANY PARISH, LA**

01

To maintain your standard of living in Slidell-St. Tammany Parish, LA, you'll need a household income of:

\$31,104

02

Seattle, WA

Slidell-St. Tammany Parish, LA

Median 2-bedroom apartment rent \$2,970

\$1,153

Median home price (3BR, 2BA) \$921,344

\$411,438

HOUSING COSTS ARE 64% LOWER IN THE SLIDELL AREA

03

**Transportation
Costs**

Gas (per gallon)

Seattle, WA

\$4.43

Slidell-St. Tammany Parish, LA

\$2.90

SEATTLE

INFORMATION FROM:




**SAVE MONEY AND
SEE MORE**

04 Food Costs 25% lower food costs in Slidell

Food	Seattle, WA	Slidell
Bread	\$5.12	\$3.80
Dozen Eggs	\$2.25	\$2.17
Gallon of milk	\$2.99	\$2.45
12-inch Pizza Hut pizza	\$13.54	\$9.54
McDonalds Quarter-Pounder with cheese	\$5.88	\$5.48

05 Entertainment Costs **24% LOWER IN SLIDELL**

06 Healthcare Costs

	Seattle, WA	Slidell-St. Tammany Parish, LA
Cost of a doctor's visit	\$166.86	\$117.38
Cost of a dentist's visit	\$145.50	\$98.26

PHILADELPHIA

INFORMATION FROM:


Current City	New City	Pre-Tax Household Income
Philadelphia, PA	Covington / Slidell	\$50,000



**THE COST OF LIVING IS 10% LOWER IN
SLIDELL-ST. TAMMANY PARISH, LA**

01

To maintain your standard of living in Slidell-St. Tammany Parish, LA, you'll need a household income of:

\$44,766

02

Philadelphia, PA

Slidell-St. Tammany Parish, LA

Median 2-bedroom apartment rent \$1,549

\$1,153

Median home price (3BR, 2BA) \$431,275

\$411,438

HOUSING COSTS ARE 22% LOWER IN THE SLIDELL AREA

03

**Transportation
Costs**

Gas (per gallon)

Philadelphia, PA

\$3.73

Slidell-St. Tammany Parish, LA

\$2.90

PHILADELPHIA

INFORMATION FROM:




**SAVE MONEY AND
SEE MORE**

04 Food Costs 20% lower food costs in Slidell

Food	Philadelphia, PA	Slidell
Bread	\$4.52	\$3.80
Dozen Eggs	\$2.35	\$2.17
Gallon of milk	\$2.48	\$2.45
12-inch Pizza Hut pizza	\$10.95	\$9.54
McDonalds Quarter-Pounder with cheese	\$4.35	\$5.48

05 Entertainment Costs **2% LOWER IN SLIDELL**

06 Healthcare Costs

Philadelphia, PA

Cost of a doctor's visit	\$135.67
Cost of a dentist's visit	\$96.23

Slidell-St. Tammany Parish, LA

	\$117.38
	\$98.26

PHOENIX

INFORMATION FROM:


Current City	New City	Pre-Tax Household Income
Phoenix	Covington / Slidell	\$50,000



**THE COST OF LIVING IS 9% LOWER IN
SLIDELL-ST. TAMMANY PARISH, LA**

01

To maintain your standard of living in Slidell-St. Tammany Parish, LA, you'll need a household income of:

\$45,576

02

Phoenix, AZ

Slidell-St. Tammany Parish, LA

Median 2-bedroom apartment rent \$1,996

\$1,153

Median home price (3BR, 2BA) \$459,796

\$411,438

HOUSING COSTS ARE 22% LOWER IN THE SLIDELL AREA

03

**Transportation
Costs**

Gas (per gallon)

Phoenix, AZ

\$3.82

Slidell-St. Tammany Parish, LA

\$2.90

PHOENIX

INFORMATION FROM:



**SAVE MONEY AND
SEE MORE**

04 Food Costs 5% lower food costs in Slidell

Food	Phoenix, AZ	Slidell
Bread	\$3.68	\$3.80
Dozen Eggs	\$2.28	\$2.17
Gallon of milk	\$1.93	\$2.45
12-inch Pizza Hut pizza	\$11.86	\$9.54
McDonalds Quarter-Pounder with cheese	\$4.54	\$5.48

05 Entertainment Costs

**7% HIGHER IN
SLIDELL**

06 Healthcare Costs

Phoenix, AZ

Slidell-St. Tammany Parish, LA

Cost of a doctor's visit \$99.00

\$117.38

Cost of a dentist's visit \$96.50

\$98.26

A close-up photograph of a magnolia tree. The image shows several large, dark green, glossy leaves with prominent veins. In the lower right foreground, a single white magnolia flower is in bloom, showing its yellow stamens and white petals. The background is softly blurred, showing more foliage and a hint of a blue sky.

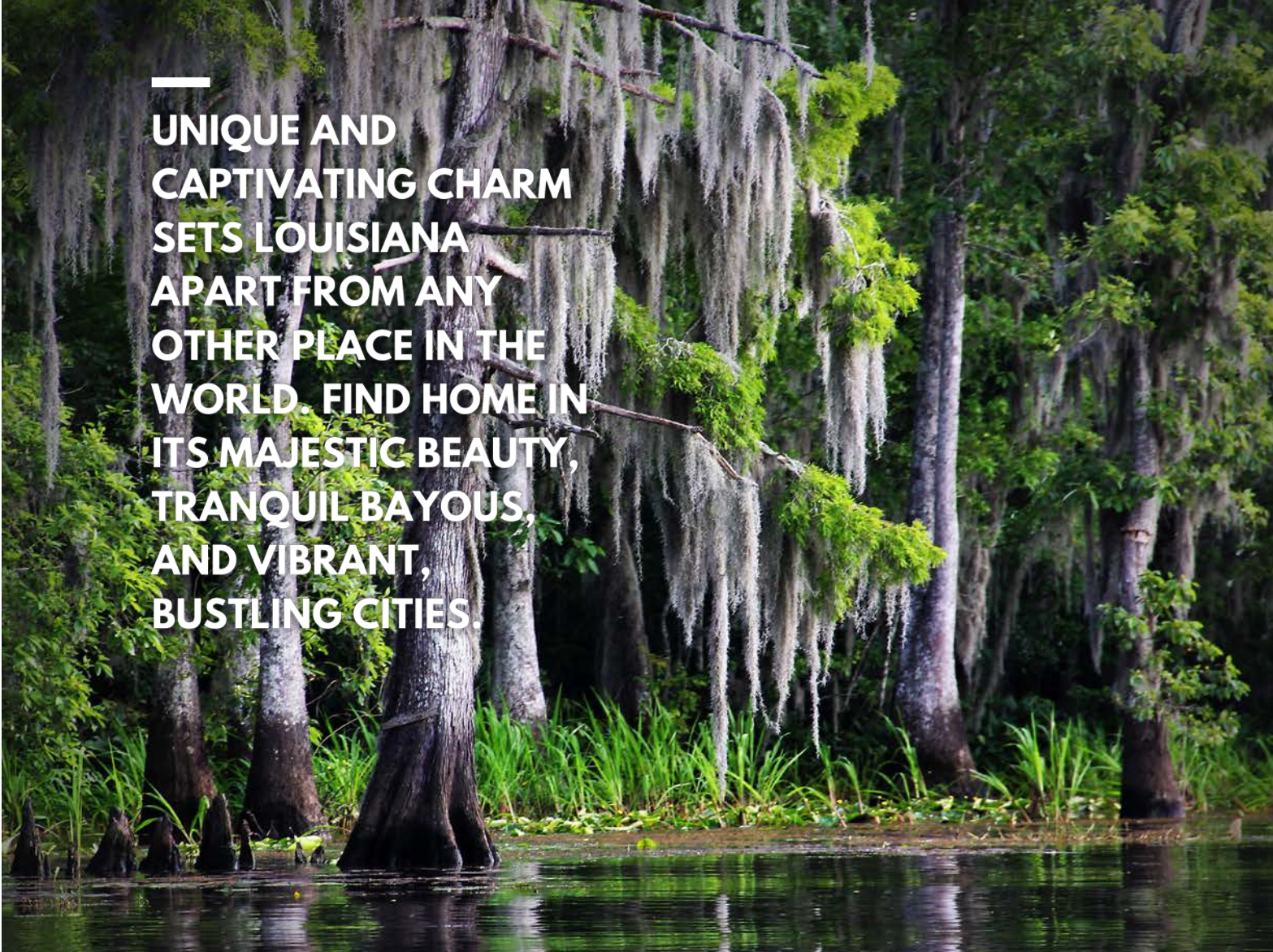
COST OF LIVING
COMPARISON GUIDE

ABOUT LOUISIANA

Gulf States Real Estate Services

COME HOME

DISCOVER LOUISIANA



—
UNIQUE AND
CAPTIVATING CHARM
SETS LOUISIANA
APART FROM ANY
OTHER PLACE IN THE
WORLD. FIND HOME IN
ITS MAJESTIC BEAUTY,
TRANQUIL BAYOUS,
AND VIBRANT,
BUSTLING CITIES.

A man and a woman are smiling and looking at a smartphone together. The woman is wearing a straw hat and a blue and white striped shirt. The man is wearing a white button-down shirt and a watch. They are outdoors, possibly at a cafe or a park, with a blurred background of greenery and a building.

WHY LOUISIANA

ENJOY EVERYTHING THE STATE HAS TO OFFER

1

Location

Louisiana is located in the southern region of the United States, bordered by Texas to the west, Arkansas to the north, Mississippi to the east, and the Gulf of Mexico to the south.

3

Cuisine

Louisiana is renowned for its distinctive and flavorful cuisine, featuring a blend of culinary traditions, with dishes such as gumbo, jambalaya, and crawfish étouffée.

2

Lifestyle

Louisiana boasts a unique and vibrant lifestyle, characterized by its rich cultural heritage, flavorful cuisine, lively music scene, and love for outdoor activities.

4

Culture

Louisiana's culture is a melting pot of diverse influences and is celebrated for its vibrant music, colorful festivals, unique architecture, and a strong sense of community.

VISIT LOUISIANA



Experience something new & different

Louisiana is known for its vibrant and diverse entertainment scene, which encompasses music, food, and festivals. The state is home to New Orleans, a city famous for its jazz music, lively nightlife, and unique cuisine. The annual Mardi Gras celebration, which takes place in New Orleans and other cities throughout the state, is a major draw for tourists, featuring parades, colorful costumes, and traditional Cajun and Creole foods.

In addition to music and festivals, Louisiana also offers a variety of outdoor activities, such as fishing and hunting, as well as historic sites and museums that showcase the state's rich cultural heritage. Louisiana provides an entertaining and enriching experience.

LOUISIANA

EXPLORE THE WATERWAYS & CITIES

Alongside its vibrant cities, Louisiana is known for its diverse and abundant wildlife, supported by the state's extensive network of wetlands, marshes, and bayous. Louisiana's most iconic species include alligators, black bears, white-tailed deer, red foxes, and bobcats.



- Louisiana bayou



- Sunset over New Orleans



- Southern Crawfish Boil

DISCOVER THE FLAVORS AND TRADITIONS OF LOUISIANA

The Outdoors

Louisiana is an excellent destination for those seeking outdoor adventure. Whether you're interested in exploring the swamps, hiking through forests, kayaking down rivers, or spotting rare birds, there are plenty of options to choose from.



Louisiana offers a variety of scenic hiking trails, ranging from rugged terrain to picturesque wetlands.

Louisiana is known as the "Sportsman's Paradise" and is a prime destination for fishing enthusiasts, offering a wide variety of species to catch in its abundant waterways, including redfish, speckled trout, bass, and catfish.



Boating is a popular recreational activity in Louisiana, with numerous waterways, such as Lake Pontchartrain, offering ample opportunities for fishing, kayaking, and other water sports.

FAMILY FUN

MEMORABLE
TIMES TO
SHARE WITH
THE WHOLE
FAMILY

Sports

Louisiana has a deep passion for sports, with football being the most popular, and is home to successful college teams and the New Orleans Saints, a beloved NFL franchise.

Music

Louisiana's music scene is diverse and rich, with genres ranging from jazz, blues, and zydeco to Cajun and Creole music, reflecting the state's multicultural heritage.

Festivals

Louisiana is renowned for its numerous and vibrant festivals, including the iconic Mardi Gras celebration in New Orleans, which showcase the state's culture, cuisine, and music.





Bourbon Street in downtown New Orleans

LOUISIANA TOURISM

Tourism is a significant industry in Louisiana, offering visitors a unique experience of the state's rich culture, history, and natural beauty. Visitors to Louisiana can explore vibrant cities like New Orleans, Baton Rouge, and Lafayette, which are known for their architecture, music, and culinary scene. The state's diverse landscape includes swamps, bayous, and forests, offering opportunities for outdoor activities such as fishing and hunting.

Louisiana is also known for its festivals, including Mardi Gras, the New Orleans Jazz and Heritage Festival, and the Louisiana Cajun-Zydeco Festival. In addition, Louisiana has a rich history, with sites such as the French Quarter, the National World War II Museum, and the Louisiana State Museum showcasing the state's past. Overall, tourism plays a significant role in Louisiana's economy, providing jobs and generating revenue for the state.

LOUISIANA

IN 2022, LOUISIANA UTILIZED ITS DISTINCTIVE BUSINESS BENEFITS, DIVERSIFIED INDUSTRIES, AND ENCOURAGEMENT OF INNOVATION AND ENVIRONMENTAL EFFORTS TO FOSTER ECONOMIC GROWTH.

It marked the second year with over \$20 billion in new business development and expansion projects and the fifth consecutive year of capex growth. These efforts are expected to create nearly 20,000 new direct, indirect, and retained jobs, with over 9,000 new direct and indirect jobs resulting from 53 major economic development projects across 24 parishes in eight economic regions. In addition to these achievements, Louisiana has laid the groundwork for future growth by promoting small business prosperity, investing in research and technology, transitioning to renewable energy sources, improving critical infrastructure, and fostering a skilled and adaptable workforce.



Business in LOUISIANA

01



LEDFastStart

State Workforce
Development Program

No. 1

Rural Areas

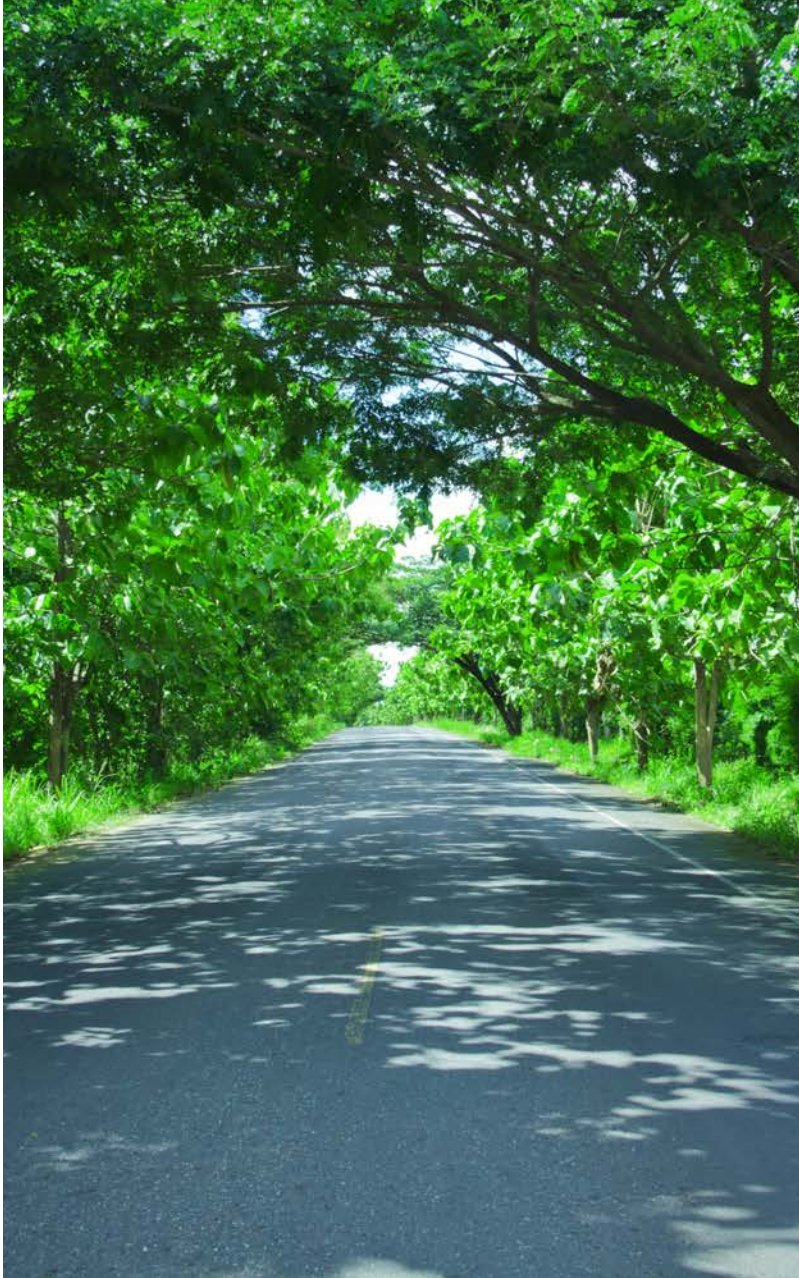
Louisiana's rural areas have undergone an evolution in recent years, with a growing focus on sustainable agriculture, ecotourism, and small business development, highlighting the state's commitment to balancing economic growth with environmental and community stewardship.

Economy

Louisiana's economy is a dynamic mix of traditional industries, such as agriculture, fishing, and petrochemicals, and emerging sectors, such as healthcare, technology, and renewable energy, providing a diverse range of opportunities for both established businesses and startups.

02





Infrastructure

Louisiana's infrastructure comprises a vast network of highways, bridges, and waterways that serve as critical links for commerce and trade. The state has invested heavily in infrastructure development in recent years, with significant investments in transportation, energy, and water resources.

Louisiana



Logistics

Louisiana's important location makes it a vital axis point for transportation logistics, with access to major waterways, railways, and highways.



Transportation

Louisiana has a diverse transportation system that includes highways, railroads, ports, and airports, making it an major transportation hub in the Southern United States.



Louisiana's strategic location and extensive transportation infrastructure make it a center for commercial trade, particularly in energy, petrochemicals, agriculture, and manufacturing, critical drivers of the state's economy.



COST OF LIVING
COMPARISON GUIDE

ABOUT ST. TAMMANY

Gulf States Real Estate Services

ST. TAMMANY



PARISH

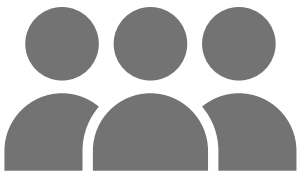
Rich cultural
heritage.

The community is tight-
knit and family-oriented,



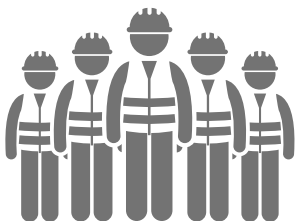
Population

264,570 Census Bureau, 2020



Labor Force

112,787 Louisiana Workforce Commission
September 2021



Median Household Income

\$68,900 Census Bureau, 2020



Average Commute

30 minutes Census Bureau, 2018



ST. TAMMANY



St. Tammany Parish

Getting to know the parish

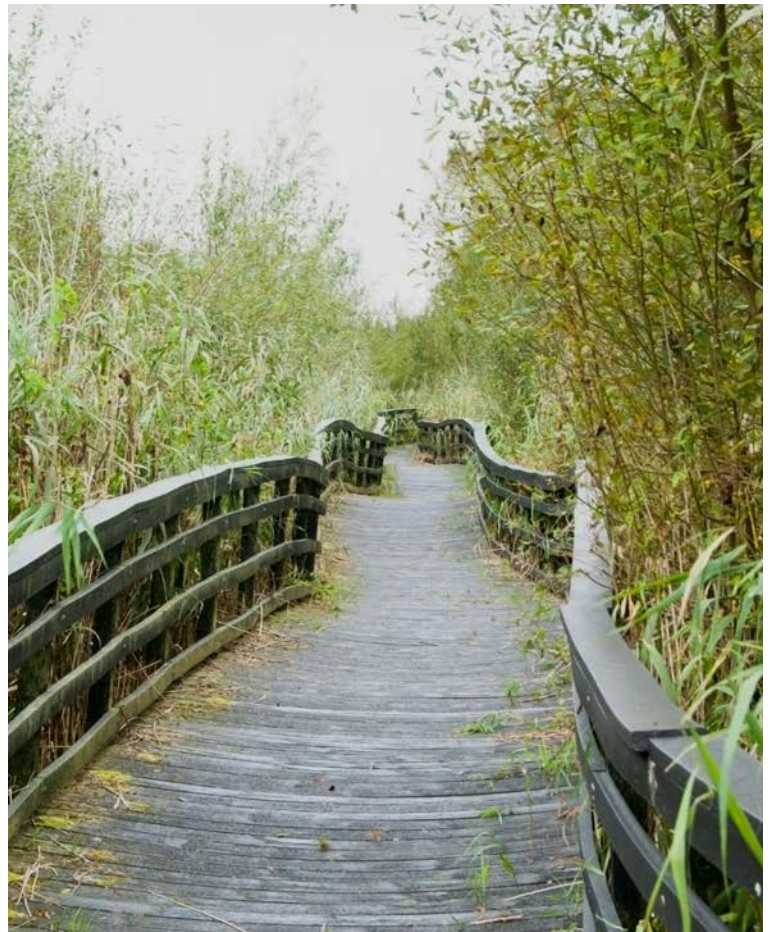
St. Tammany Parish offers a wide range of recreational activities that are sure to keep visitors and residents entertained. The parish is home to several parks, nature trails, and wildlife reserves where visitors can go hiking, fishing, kayaking, and camping. One of the most popular recreational destinations in St. Tammany Parish is the Fontainebleau State Park, which boasts a beach, cabins, campsites,

and a lodge. The parish also has several golf courses and country clubs for those who enjoy playing golf. In addition, St. Tammany Parish has a vibrant arts and cultural scene, with several galleries, theaters, and museums that showcase local and regional talent. Whether you are looking for outdoor adventures or cultural experiences, St. Tammany Parish has something for everyone.



ST. TAMMANY PARISH

St. Tammany Parish offers residents a unique and desirable lifestyle, with a high quality of life, excellent schools, a strong sense of community, and access to numerous recreational opportunities. The parish's natural beauty, including its forests, wetlands, and waterways, provides opportunities for outdoor activities such as fishing, hiking, and kayaking. The parish's commitment to preserving its natural environment is evident in initiatives such as the Tammany Trace, a 31-mile trail for hiking, biking, and horseback riding that runs through the parish. In addition to outdoor activities, the parish has a vibrant arts and culture scene, with numerous festivals, museums, and galleries showcasing the region's rich history and heritage. The parish's strong sense of community is reflected in events such as the Covington Farmer's Market, the Madisonville Wooden Boat Festival, and the Mandeville Trailhead Community Market, which bring residents together to celebrate the parish's unique culture and community spirit. St. Tammany Parish's lifestyle is characterized by its natural beauty, strong community spirit, and diverse range of recreational and cultural opportunities.

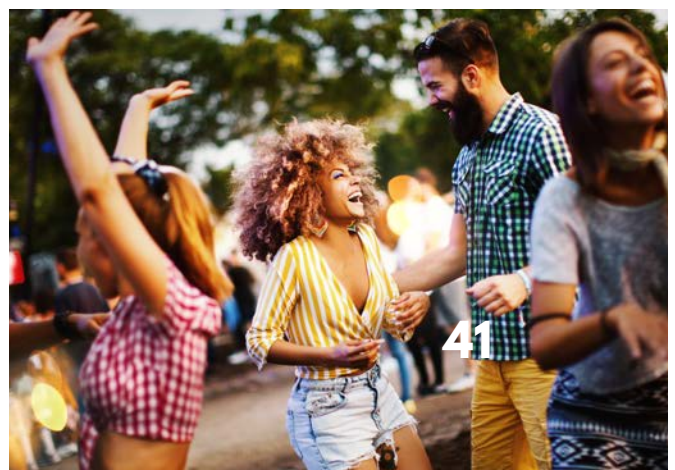


LIFESTYLE

— *St. Tammany Parish*

The Culture

The region is home to a diverse population that has preserved its unique traditions and customs over the years. The Cajun and Creole cultures are prominent in St. Tammany Parish, and these communities have influenced the local cuisine, music, and language. Jazz music, in particular, has a strong presence in the area, with many local festivals and events celebrating this genre. The Mardi Gras celebrations in St. Tammany Parish are lively and festive, with elaborate parades and masked balls taking place throughout the season. St. Tammany Parish's culture is vibrant and deeply rooted in history, making it a fascinating place to visit and experience.



St. Tammany

The community in St. Tammany Parish is tight-knit, friendly, and family-oriented.

The parish is known for its warm and welcoming atmosphere, where neighbors know each other and work together to create a safe and supportive environment.

There are numerous community events and activities throughout the year, including festivals, fairs, and charity events, which provide opportunities for residents to come together and celebrate their shared heritage and interests. The parish also has a vibrant arts and cultural scene, with several museums, galleries, and theaters showcasing local talent and history.

St. Tammany Parish is blessed with stunning natural beauty, featuring picturesque waterways, verdant parks, and sprawling forests, offering its residents abundant opportunities to revel in outdoor activities and foster a deep connection with nature. The community in St. Tammany Parish is diverse and inclusive, with a deep appreciation for its rich history and cultural traditions, making it a wonderful place to live, work, and raise a family.

COMMUNITY

Education is an essential aspect of life in St. Tammany Parish.



The parish has a strong public education system.

There are more than 50 schools, serving approximately 40,000 students. The St. Tammany Parish Public Schools system offers a variety of educational programs, including gifted and talented education, special education, and career and technical education. In addition, the parish has several private schools, providing parents with a range of options for their children's education. Higher education institutions such as Southeastern Louisiana University and Northshore Technical Community College also have campuses in the parish, offering residents opportunities for continuing education and professional development. St. Tammany Parish's commitment to education is evident in its high graduation rates and the success of its graduates in pursuing higher education and careers.

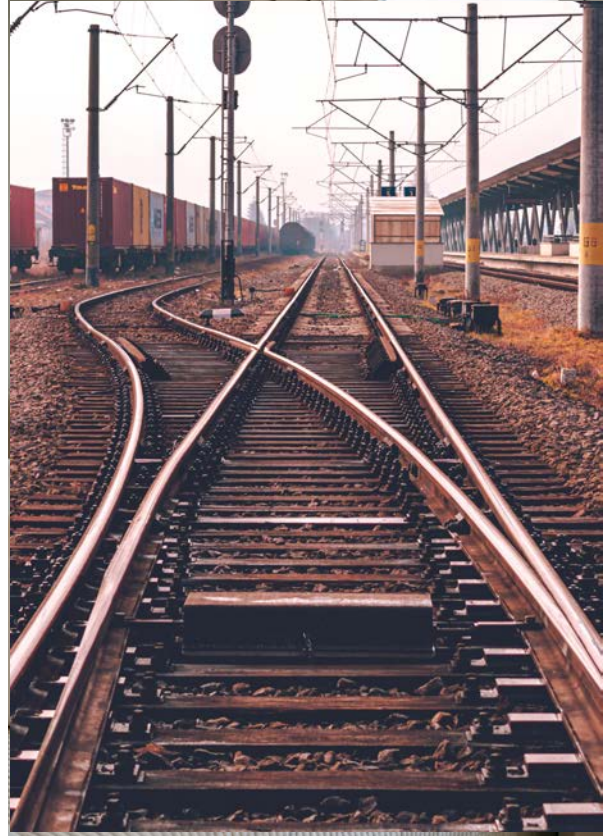
THE BEST WAYS TO EXPLORE LOUISIANA



INTERSTATES

01

Intersection of 4
major interstates
including I-10, I-12, I-
59, and I-55



RAIL

02

Proximity to Six Class
I railroads

THE BEST WAYS TO EXPLORE LOUISIANA



PLANE

03

2 International
Airports
21 airports within 50
miles



PORT

04

Proximity to the Port
of New Orleans & the
Port of South
Louisiana

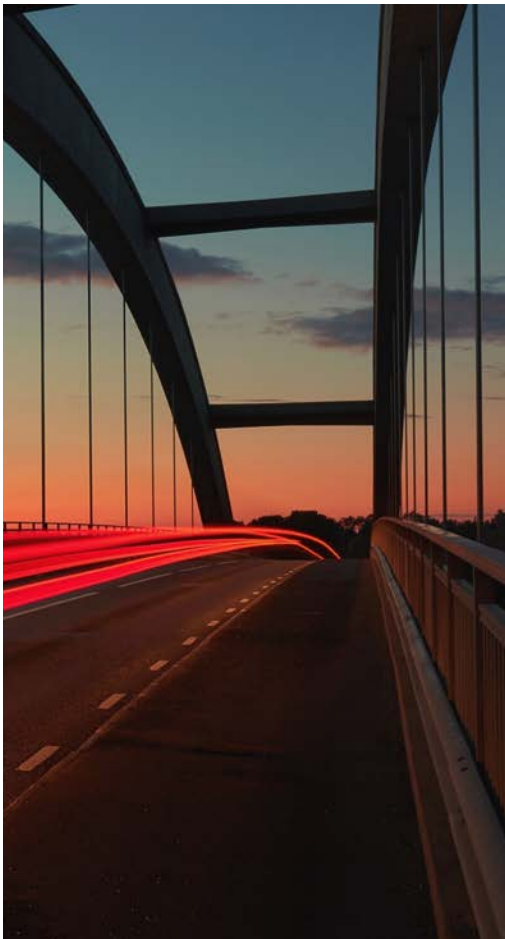
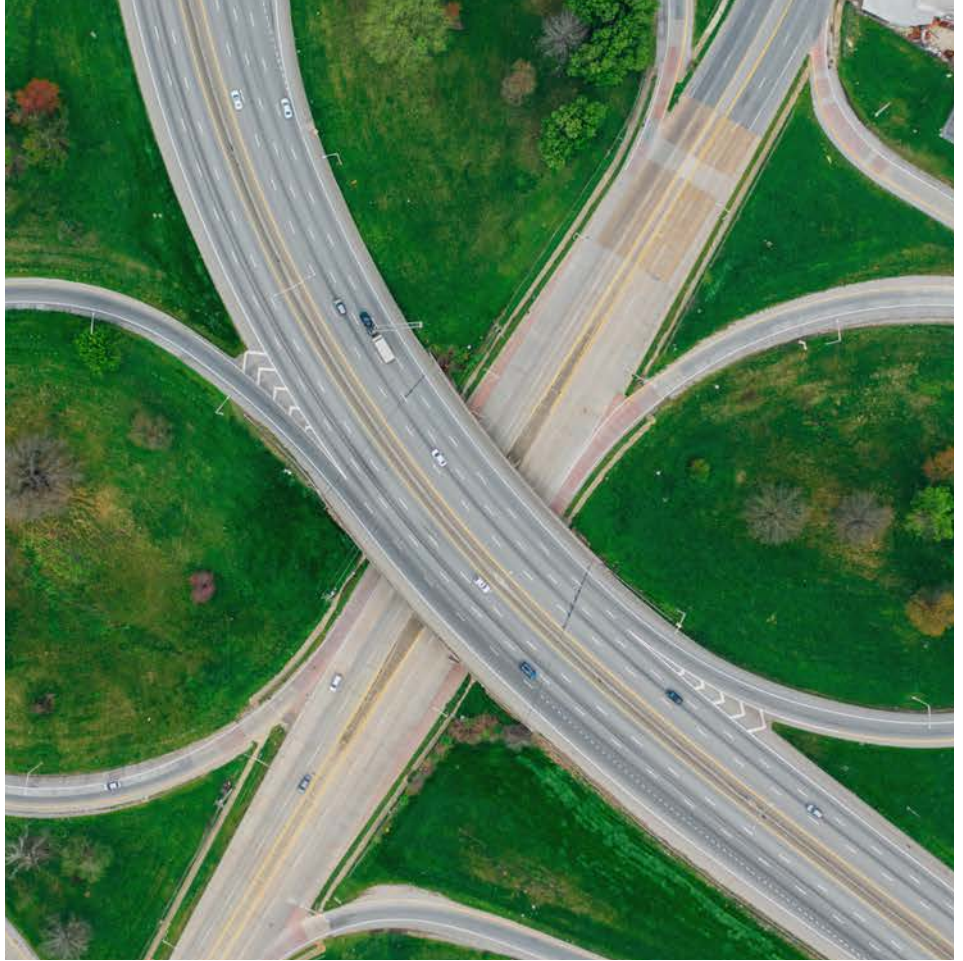
St. Tammany Parish

Logistics

St. Tammany Parish's location provides access to major highways, rail lines, and waterways, making it an ideal location for logistics and transportation businesses.

Transportation

St. Tammany Parish has a well-developed transportation system that includes major highways, a regional airport, and access to the Mississippi River via the Port of New Orleans, which support the area's businesses and residents.



The Infrastructure

St. Tammany Parish has a strong transportation and logistics industry, which plays a vital role in the local economy. The parish's location on the north shore of Lake Pontchartrain provides easy access to New Orleans and other major cities in the region, making it a prime location for businesses involved in transportation and logistics. St. Tammany Parish has a well-developed transportation infrastructure, including major highways like Interstate 12 and U.S. Highway 190, as well as a regional airport, the Hammond

Northshore Regional Airport, which provides commercial and general aviation services to the area. Additionally, the Port of New Orleans provides access to the Mississippi River, enabling businesses to transport goods and materials via barge. Overall, the combination of St. Tammany Parish's location, transportation infrastructure, and access to the Mississippi River make it an attractive location for businesses involved in logistics and transportation.

A Great Egret with long white feathers and a long, sharp yellow beak stands in a marshy area. The background is a soft-focus view of water and green reeds.

Outdoors

—— St. Tammany Parish

St. Tammany Parish is home to a diverse range of wildlife.

The Natural Beauty

The parish's wildlife includes a variety of mammals, such as deer, raccoons, and coyotes, as well as reptiles like alligators and turtles. The wetlands and waterways of the parish provide habitats for numerous species of birds, including herons, egrets, and pelicans. Fish such as catfish, bass, and crappie

can also be found in the parish's waterways. The parish's commitment to preserving its natural environment through initiatives such as land conservation and wetland restoration is essential in ensuring the continued health and survival of its wildlife. Residents and visitors can enjoy the wildlife of St. Tammany Parish through activities like birdwatching, fishing, and nature walks.

Known for its varied and vibrant dining scene

St. Tammany Parish offers visitors and residents a range of culinary experiences. The parish's restaurants reflect the region's rich cultural heritage, with Cajun, Creole, and Southern cuisine among the most popular. Fresh seafood is also a staple of the parish's dining scene, with dishes featuring oysters, shrimp, and crawfish. In addition to traditional Southern fare, the parish's restaurants offer a variety of international cuisines, including Italian, Mexican, and Vietnamese. The region's reputation for culinary excellence is reflected in initiatives such as the Tammany Taste of Summer and the Northshore Restaurant Week, which promote the parish's dining scene and encourage residents and visitors to explore the diverse range of restaurants. Whether dining in a casual cafe or an upscale restaurant, St. Tammany Parish's dining scene will satisfy the most discerning palates.





RETAIL

St. Tammany Parish is home to a thriving retail industry, offering residents and visitors a range of shopping options. The parish has several shopping centers, including the North Shore Square Mall and the Fremaux Town Center, which feature a variety of national and local retailers. In addition, the parish's downtown areas, such as Covington and Mandeville, have a charming and eclectic mix of shops, including boutiques, art galleries, and antique stores. The parish also hosts several farmers' markets, offering visitors the opportunity to purchase fresh produce, locally made products, and handmade crafts.

St. Tammany Parish's commitment to supporting local businesses is evident in initiatives such as Small Business Saturday and the Northshore Shop Local campaign, aimed at promoting the parish's small businesses and encouraging residents to shop locally. Overall, St. Tammany Parish's retail industry is essential in providing residents and visitors with a diverse range of shopping options, contributing to the parish's economic vitality.

St. Tammany Parish is home to several healthcare facilities, providing residents with access to quality healthcare.

The parish has several hospitals, including St. Tammany Health System and Lakeview Regional Medical Center, as well as numerous clinics and medical centers. The healthcare facilities in the parish offer a range of services, including primary care, emergency care, surgery, and specialized care in areas such as cardiology, oncology, and pediatrics. In addition, St. Tammany Parish has a strong network of healthcare providers, including physicians, nurses, and other medical professionals. The parish's commitment to healthcare is reflected in initiatives such as community health programs and healthcare education aimed at improving the health and well-being of its residents. Overall, the healthcare system in St. Tammany Parish is essential in ensuring the continued health and vitality of the community.





COST OF LIVING
COMPARISON GUIDE

ABOUT COVINGTON

Gulf States Real Estate Services

Covington, Louisiana,
is a unique and
special place with
friendly and
welcoming people.

Introducing historic Covington, Louisiana

The city boasts a high quality of life, with a diverse range of housing options, top-rated schools, and a thriving arts and culture scene. The city's downtown area is particularly popular, with its charming shops, restaurants, and cafes.

Covington has a strong sense of community, with a friendly and welcoming atmosphere that makes it an excellent place to raise a family or start a business. The city hosts several annual events and festivals that bring residents together and celebrate the city's unique culture and history.

Overall, Covington, Louisiana offers a blend of affordability, convenience, and quality of life that makes it an attractive destination for residents and businesses alike.

COVINGTON

01

HISTORIC DOWNTOWN

The area features charming shops, restaurants, art galleries, and live music venues.

03

ARTS AND CULTURE

A thriving arts and culture scene with a variety of galleries, theaters, and museums.

02

NATURAL BEAUTY

Home to several public green spaces, including Bogue Falaya Park and the Tammany Trace.

04

FESTIVALS AND EVENTS

Hosts several annual events and festivals that bring residents and visitors together.



GULF STATES REAL ESTATE SERVICES



COVINGTON, LOUISIANA

52

Cost of Living Comparison Guide

Louisiana



985.792.4385



VersaillesCenter.com



109 New Camellia Blvd
Covington, LA 70433

