

DON RANDON
REAL ESTATE, Inc.
600 Carondelet St., Suite 609
New Orleans, LA 70130

6.8 Acres in Dynamic Commercial/Retail Area–Metro New Orleans



DON RANDON REAL ESTATE, Inc.

600 Carondelet Street, Suite 609, New Orleans, LA 70130 • Ph: (504)581-1111 Ext.28 • Fax: (504)581-1114



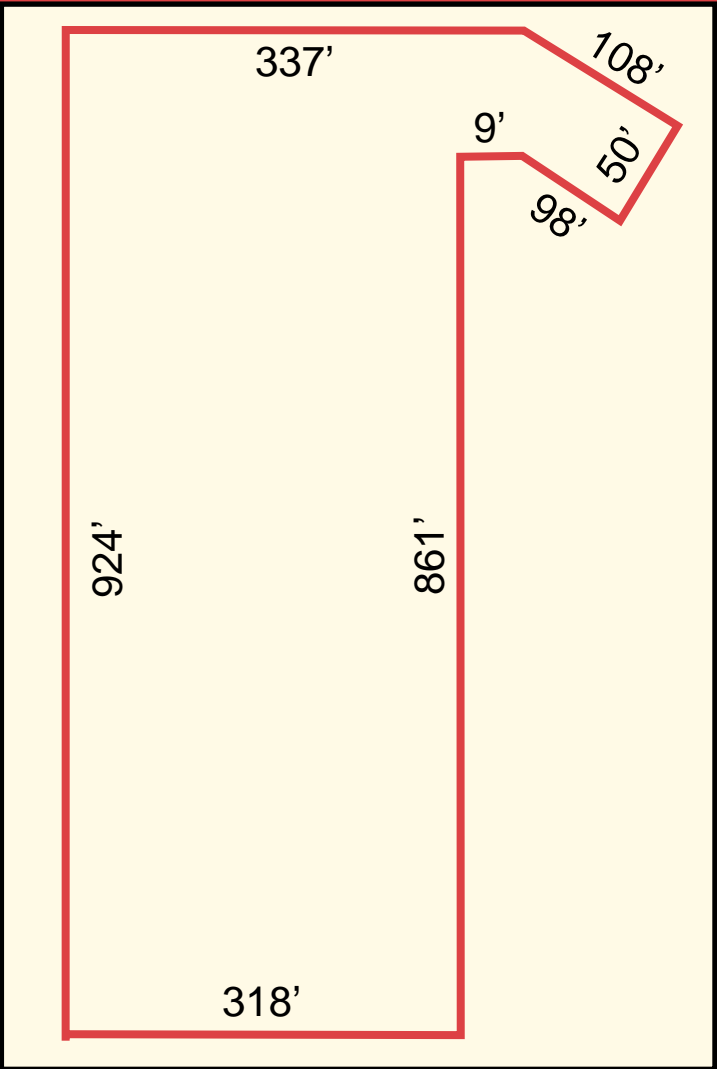
- Prime Retail Development Site
- 318' Frontage on Jefferson Hwy
- 924' Frontage on Future Dickory Extension
- Zoned M-1 (Light Industrial)
- Located in Unincorporated Jefferson Parish
- Close to numerous national retailers
- Close to the Huey P. Long bridge—soon to be expanded
- Upcoming Huey P. Long bridge expansion project completion will increase traffic flow on Jefferson Hwy
- One of the largest vacant high traffic sites available in East Bank Jefferson Parish

DON RANDON
REAL ESTATE, Inc.

MIKE WOLFORD

600 Carondelet St., Suite 609
New Orleans, LA 70130
(504) 581-1111 Ext.28
FAX: (504) 581-1114
CELL: (504) 915-7703
E-Mail mwolford@bellsouth.net

6.85 Acres
298,345 Sq.Ft.



All information contained herein was obtained from sources deemed reliable. Don Randon Real Estate, Inc. makes no representations or warranties regarding the foregoing information. Availability subject to errors, omissions, changes in terms and conditions, prior sale or lease or withdrawal without notice.