

SUMMARY

AERIAL

BEAVER CREEK PHOTOS

MAPS

SITE PLAN

SURVEY

DEMOGRAPHICS

UNIQUE RESIDENTIAL OPPORTUNITY READY FOR DEVELOPMENT NOW AVAILABLE - ALL OR PART

BIG PRICE REDUCTION

~~\$7,900,000 (\$27,200 +/- per acre)~~
• \$6,693,000 (\$23,000 +/- per acre)

LAND SIZE

- 291 ± Acres (Subject to Survey)

LOCATION

- In East Baton Rouge Parish "EBRP" (pop. 456,700 +/-)
- Partly adjoining Zachary City Limits (pop. 19,300 +/-)
- Easy 27 minute (21 mile) drive north of downtown Baton Rouge & LA State Capitol campus
- 17 miles north of Baton Rouge Municipal Airport (BTR)

PROPERTY FEATURES

- Adjoins 200-acre, 18-hole, 5-star, public Beaver Creek Golf Course opened in 2002. Long frontage on 13 fairways.
- Adjoins 125-lot (124 homes) "Beaver Creek on the Plains" single-family subdivision. Per MLS, recent home sales range from \$274,900 - \$535,000 (\$152 psf - \$192 psf). Living Area: 1,678 sf - 3,513 sf. (Subject to verification)
- GREAT ACCESS Frontage on 2 parish roads & 3 public streets
- In very desirable Zachary Public School District #1. One of the State's best!

ZONING & CITY LIMITS

- Zoning: Rural. Future Land Use Designation is "Residential Neighborhood"
- City Limits: Outside (part adjoins Zachary city limits)

TOPOGRAPHY

- Gently rolling & mostly covered in pine & hardwood timber.

FLOOD ZONE

- Some A, mostly X



PROPOSED

- 59-lot, 40-acre "Beaver Creek on the Plains, 4th Filing" on golf course fairways 16, 17 & 18 is designed & platted & is a part of this 291 acres.

UTILITIES & SERVICES TO PROPERTY

- UTILITIES - Water & natural gas by City of Zachary, Sewer by National Water Infrastructure (www.nwila.com), Electricity by Entergy, All underground phone & electric wiring
- SERVICES - Fire Protection: Zachary Fire Department, Police Protection: EBRP Sheriff's Department, EMS: EBRP, and Garbage: EBRP c/o Republic Services

SUMMARY

AERIAL

BEAVER CREEK
PHOTOS

MAPS

SITE PLAN

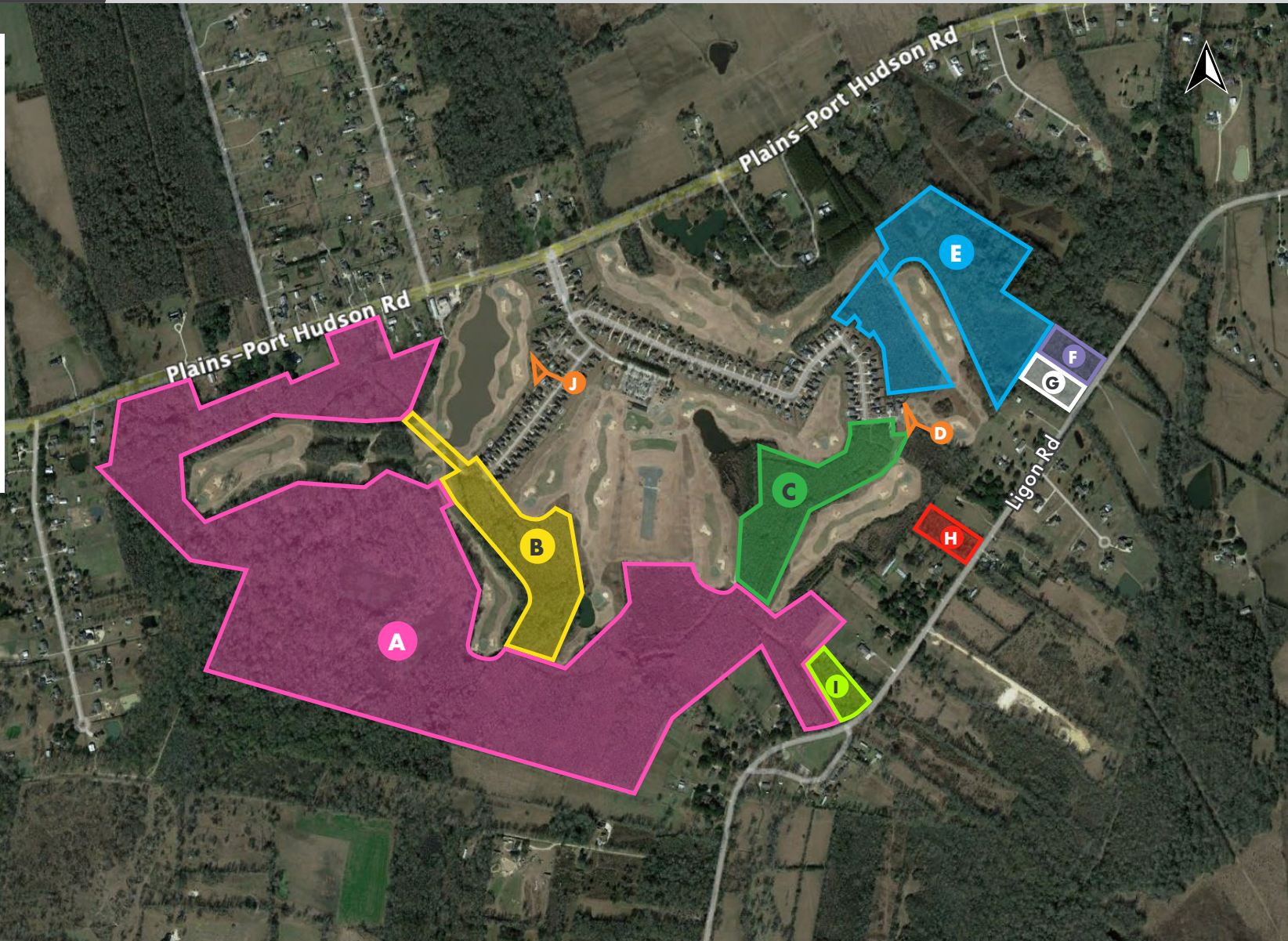
SURVEY

DEMOGRAPHICS

PARCEL SIZES ±
ALL SUBJECT TO SURVEY

- A - 204 Acres
- B - 19.97 Acres
- C - 18.99 Acres
- D - 0.15 Acres (Sewer Lift)
- E - 34.75 Acres
- F - 3.16 Acres
- G - 3.16 Acres
- H - 3.08 Acres
- I - 2.77 Acres
- J - 0.33 Acres (Sewer Treatment)

TOTAL - 290.69 ± ACRES



stirling

JIM S. DOWLING, SIOR

Office: 985-898-2022

Cell: 318-347-2043

jdowling@stirlingprop.com

291 ± ACRES FOR SALE

ON BEAVER CREEK GOLF COURSE & SUBDIVISION

1100 E. Plains-Port Hudson Road, Zachary, LA 70791

SUMMARY

AERIAL

BEAVER CREEK
PHOTOS

MAPS

SITE PLAN

SURVEY

DEMOGRAPHICS



SUMMARY

AERIAL

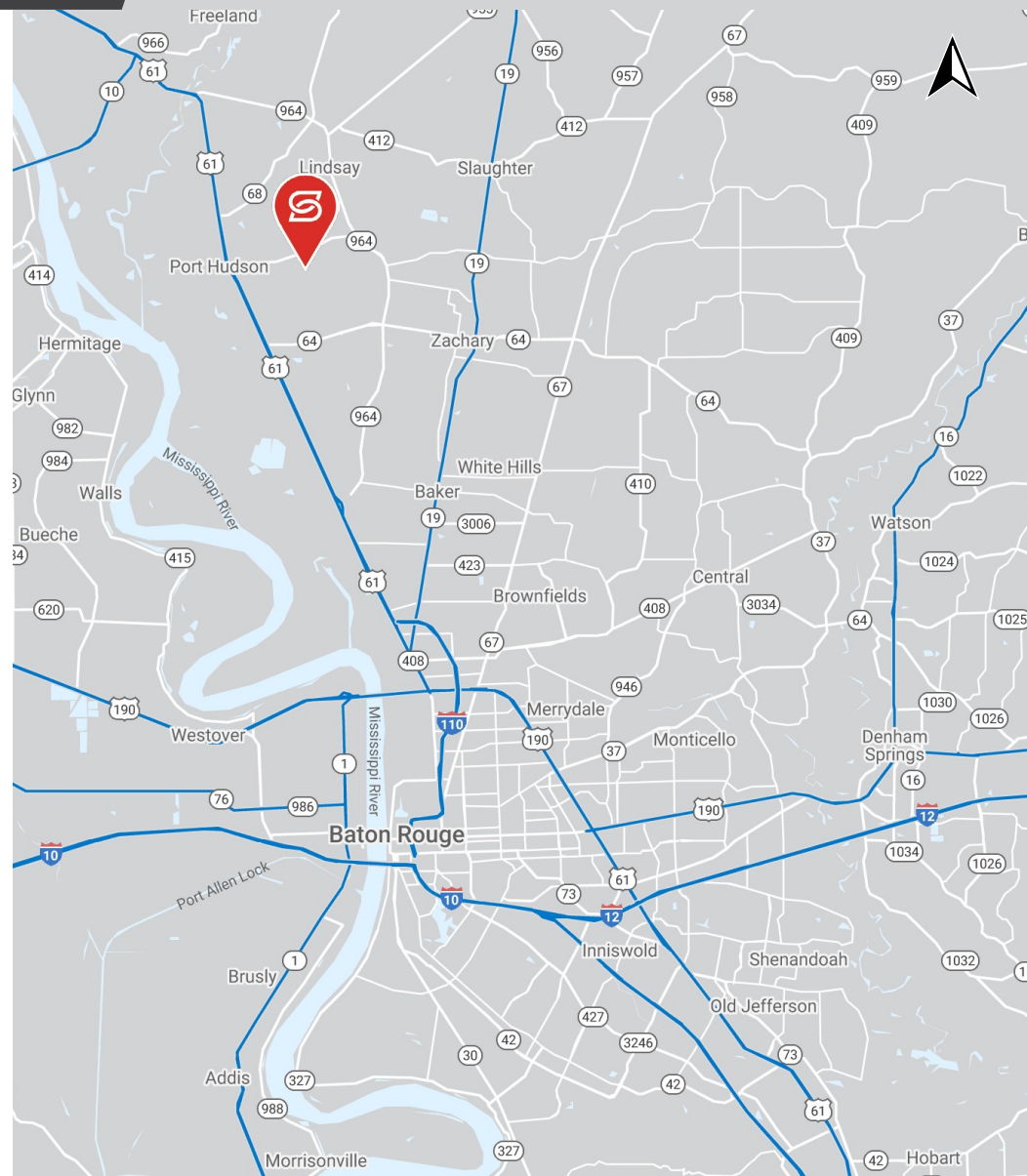
BEAVER CREEK PHOTOS

MAPS

SITE PLAN

SURVEY

DEMOGRAPHICS



SUMMARY

AERIAL

BEAVER CREEK
PHOTOS

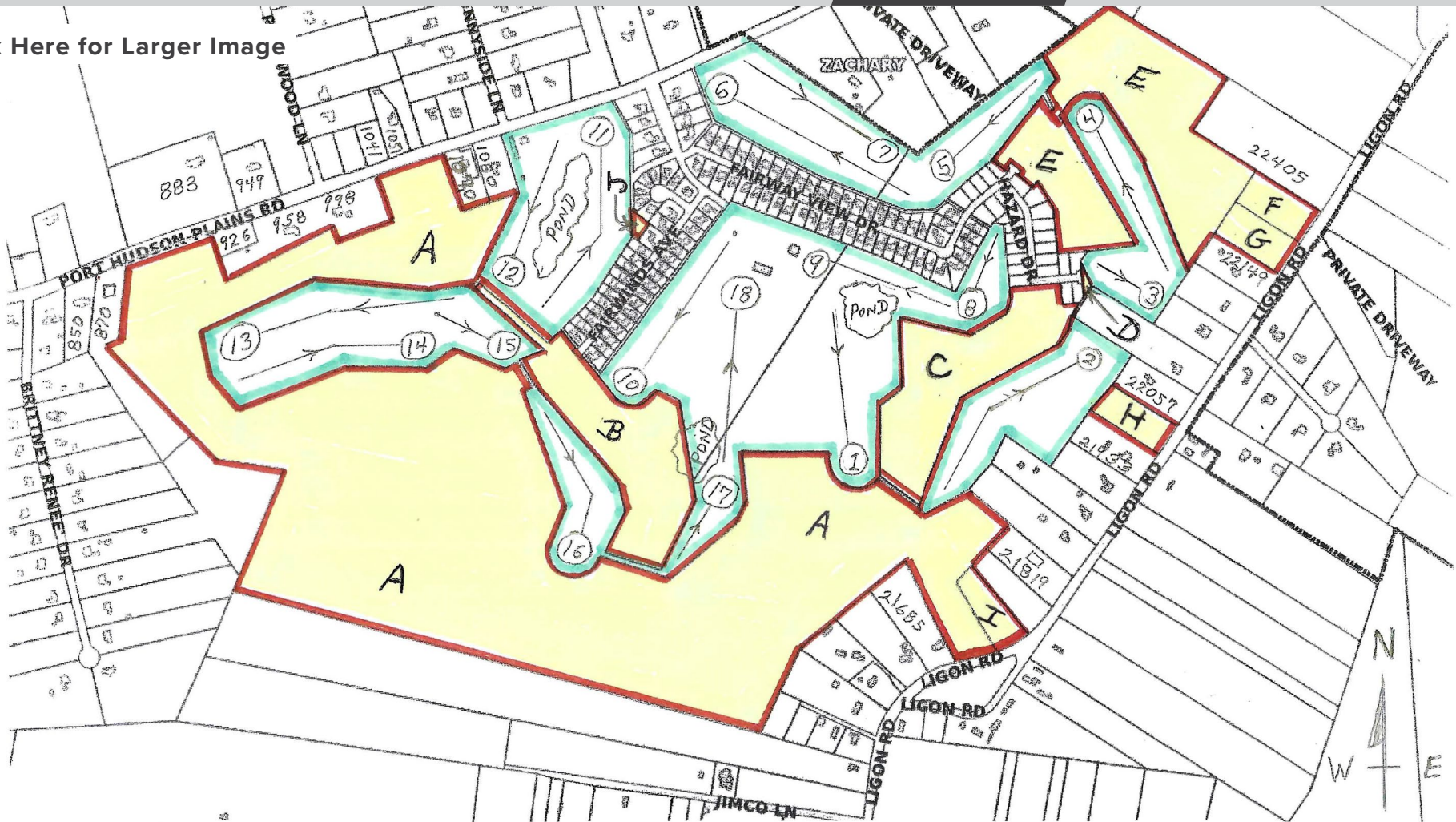
MAPS

SITE PLAN

SURVEY

DEMOGRAPHICS

[Click Here for Larger Image](#)



- A: 204 ± AC., ● B: 19.97 ± AC., ● C: 18.99 ± AC., ● D: 0.15 ± AC. (SEWER LIFT)
- E: 34.75 ± AC., ● F: 3.16 ± AC., ● G: 3.16 ± AC., ● H: 3.08 ± AC.,
- I: 2.77 ± AC., ● J: 0.33 ± AC. (SEWER TREATMENT)
- TOTAL: 290.69 ± AC. (All subject to Survey)

SUMMARY

AERIAL

BEAVER CREEK
PHOTOS

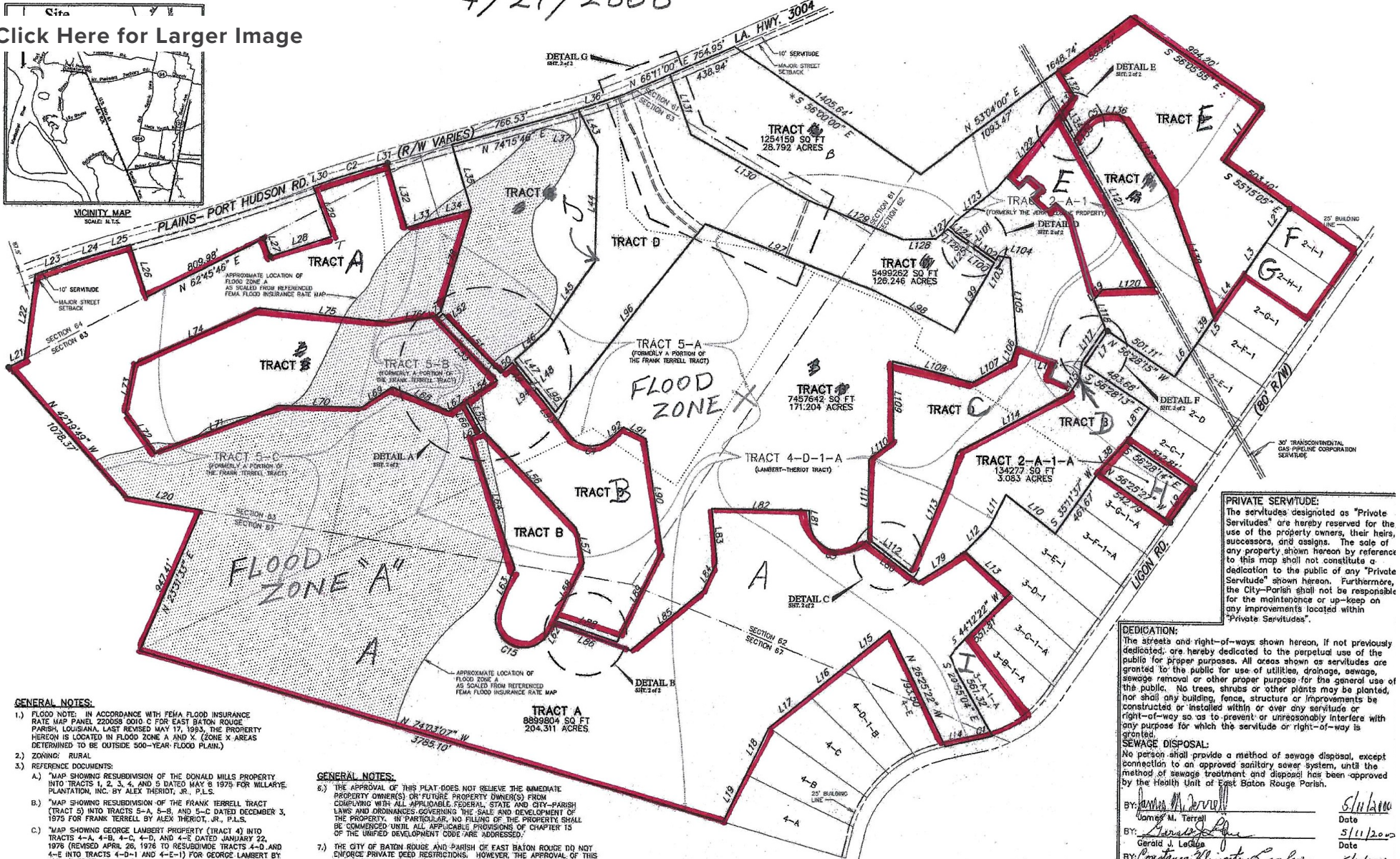
MAPS

SITE PLAN

SURVEY

DEMOGRAPHICS

Click Here for Larger Image



SUMMARY

AERIAL

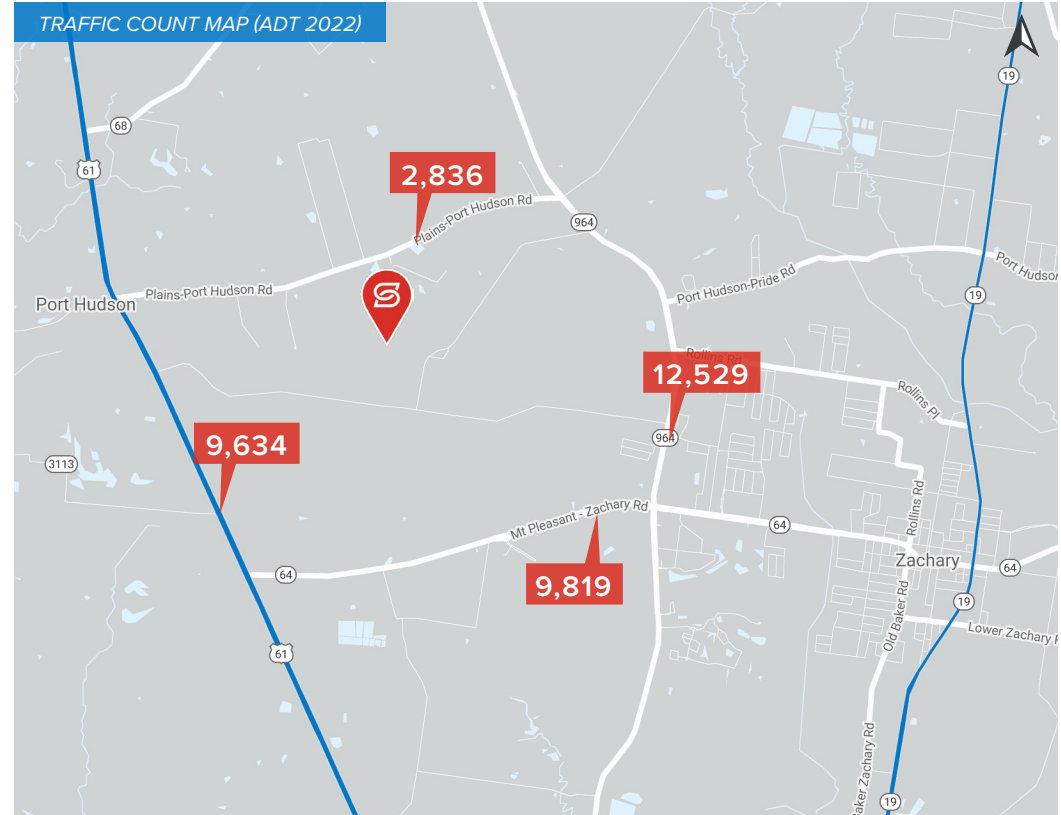
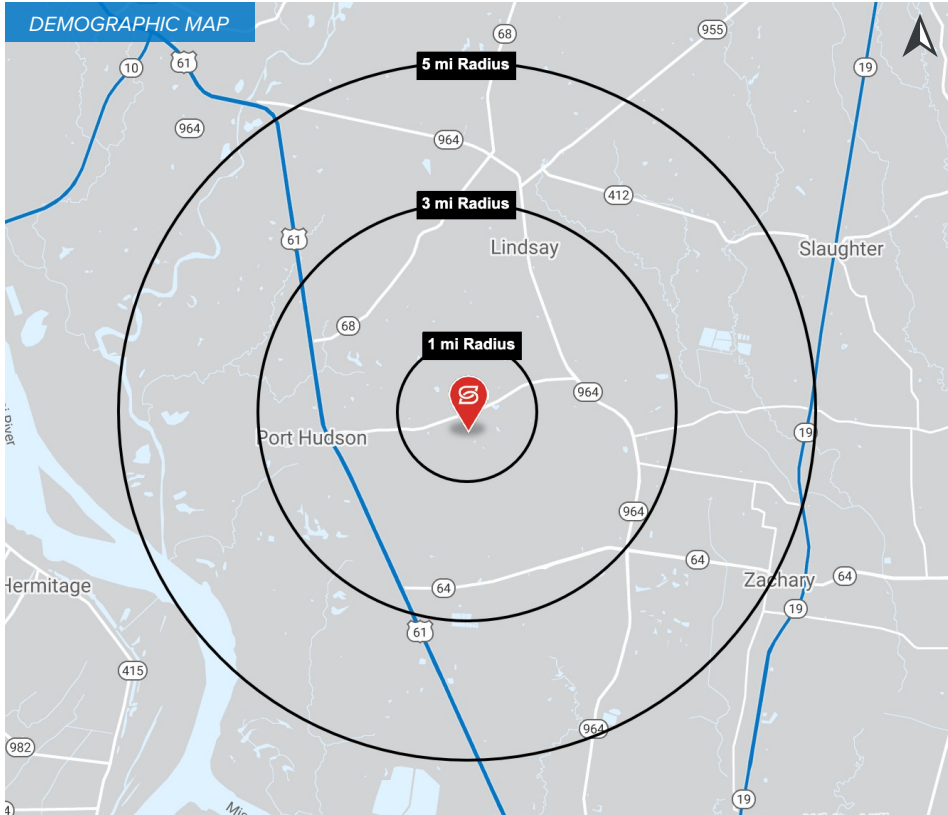
BEAVER CREEK
PHOTOS

MAPS

SITE PLAN

SURVEY

DEMOGRAPHICS



2023 DEMOGRAPHICS

1 MILE

3 MILE

5 MILE



1,515

7,483

20,04

1 MILE

3 MILE

5 MILE



\$154,876

\$110,796

\$120,862

1 MILE

3 MILE

5 MILE



554

2,654

7,016