

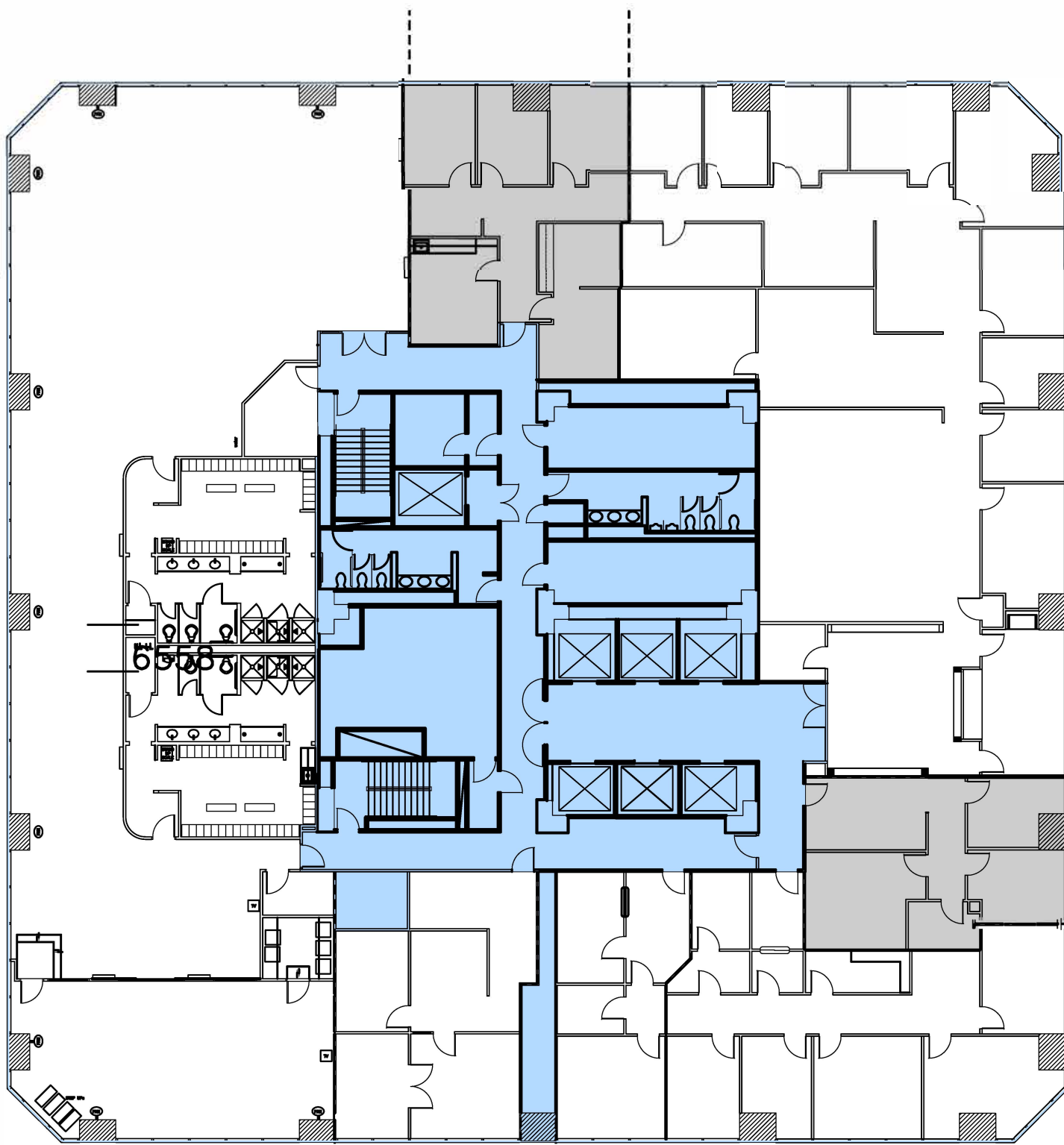
POYDRAS STREET

ENERGY  
FITNESS  
CENTER  
SUITE #1890  
7,503 R.S.F.

SUITE #1800  
5,169 R.S.F.

SUPERDOME

LOYOLA AVE.



SUITE 1850  
1,010 R.S.F.

SUITE 1830  
818 R.S.F.

23,843 GROSS RENTABLE AREA  
- 5,378 CORE / CORRIDOR RSF  
18,465 RSF (TENANT AREAS)

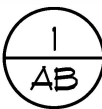
GIROD STREET



FLOOR  
**18**

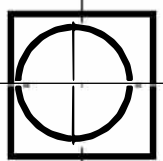


ENERGY BUILDING  
639 LOYOLA AVE.  
NEW ORLEANS, LA



**18-AS BUILT PLAN**

SCALE: N.T.S.



**AGL**  
COMMERCIAL INTERIORS

433 METAIRIE ROAD  
SUITE 208

METAIRIE, LA 70005  
504.888.9077

PROJECT

**FLOOR 18**

ENERGY BUILDING  
639 LOYOLA AVE.  
NEW ORLEANS, LA

QT

ASK NO.

7421

**18** AB