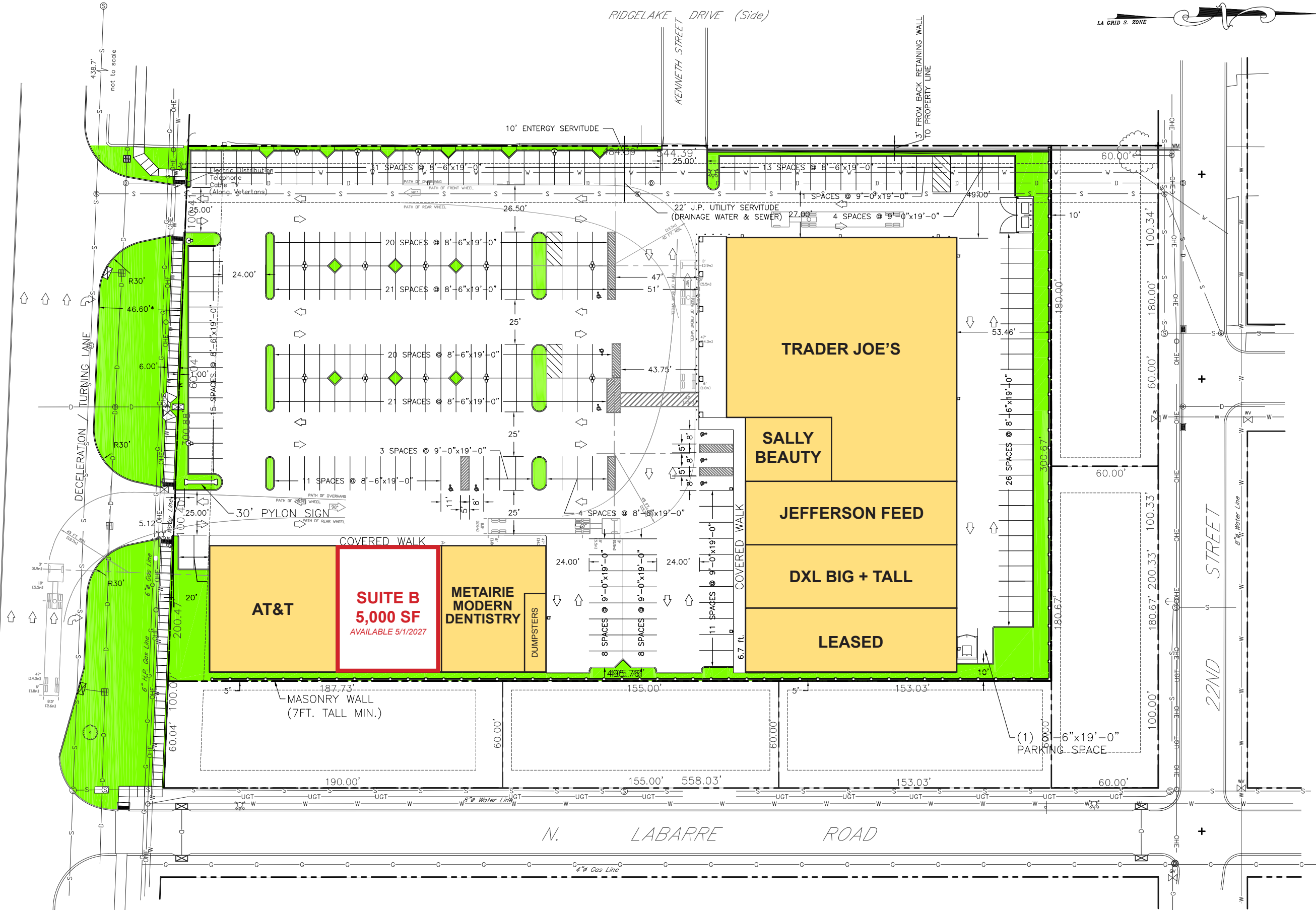


CAVAL NO. 3  
 (Also Known as Veterans Highway)  
**VETERANS MEMORIAL BOULEVARD**



CECILE PARK SUBDIVISION
LOT 1 SQUARE 1
LOT AREA: 3.38 ACRES
DEVELOPMENT: 45,000 SQ. FT.
ZONING: C-1, CPZ OVERLAY
LAND USE: HIC

PARKING PROVIDED
217 PARKING SPACES
8 ADA SPACES
TOTAL 225 PARKING SPACES

REV.	DATE	DESCRIPTION

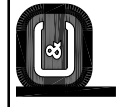
DATE: 9/15/15  
 DRAWN BY: PF  
 CHECKED BY: MAC  
 FILE NAME: SITE PLAN 02

SHEET TITLE:  
 SITE PLAN

PROJECT NO.:  
 07015

DWG. NO.:  
 02

SHEET OF



**PERRIN & CARTER INC.**  
 ENGINEERS, ARCHITECTS, & PLANNERS  
 3501 Ridgelake Dr., Metairie, La 70002  
**TOLMAS RETAIL DEVELOPMENT - PHASE 01**  
 Metairie, Louisiana

