

FOR LEASE

PROPERTY OVERVIEW

Main Street Center offers a prime retail opportunity situated in the SE quadrant of Gause Blvd and I-10 in Slidell, LA – one of the most highly trafficked commercial corridors in St. Tammany Parish. The site neighbors the area's Walmart Supercenter and Lowe's Home Improvement, and it is bounded on three sides by I-10 (Service Rd.), Gause Blvd., and Tyler Drive (the main boulevard entrance to Walmart/Lowe's), offering great visibility from all three boundaries. There are also two major hospitals (Ochsner Medical Center: Slidell and Slidell Memorial Hospital) in the surrounding area, as well as many schools and other notable commercial businesses & offices. The I-10, I-12, and I-59 interchange is within approx. 1 mile, along with several name hotels in the immediate area. Additionally, the property is conveniently located only one exit from Fremaux Town Center.

AVAILABLE

- Suite 150 - 3,580 SF *2nd-Generation Restaurant Space*
- Suite 160 - 4,200 SF
- Suite 180 - 4,800 SF
- Suite 210 - 1,600 SF
- Suite 230 - 3,939 SF

TENANTS

Starbucks, Willow Pharmacy, AllBrands.com, AT&T, Mariner Finance, You Boutique, Wonder Cuts, GameStop, Cajun Blazin Wingz, Blossom Nail Spa

NEARBY TRAFFIC GENERATORS

- Ochsner Medical Center Slidell & Slidell Memorial Hospital
- Fremaux Town Center: includes Kohl's, Dillard's, Dick's Sporting Goods, T.J.Maxx, Cavender's, Old Navy, Michaels, ULTA Beauty, Best Buy, Marshall's and many more.
- Nearby Hotels: Days Inn, Quality Inn, Windgate by Wyndham, Red Roof Inn, Comfort Inn & Suites, Best Western, Motel 6



SUMMARY

AERIAL

SITE PLAN

PROPERTY
PHOTOS

VACANT SUITE
PHOTOS

SUITE 150
LOD PLAN

DEMOGRAPHICS



SUMMARY

AERIAL

SITE PLAN

PROPERTY
PHOTOS

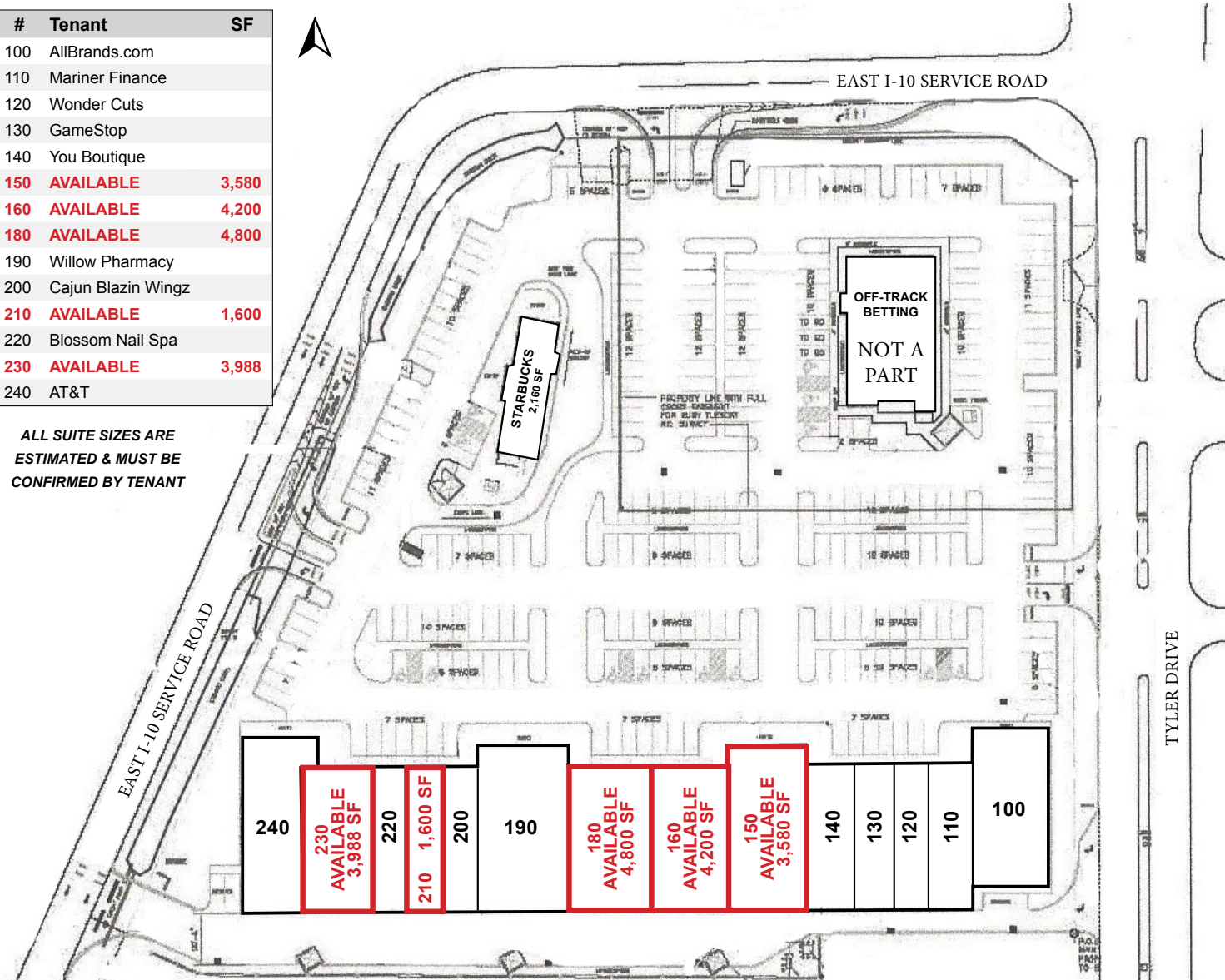
VACANT SUITE
PHOTOS

SUITE 150
LOD PLAN

DEMOGRAPHICS

#	Tenant	SF
100	AllBrands.com	
110	Mariner Finance	
120	Wonder Cuts	
130	GameStop	
140	You Boutique	
150	AVAILABLE	3,580
160	AVAILABLE	4,200
180	AVAILABLE	4,800
190	Willow Pharmacy	
200	Cajun Blazin Wingz	
210	AVAILABLE	1,600
220	Blossom Nail Spa	
230	AVAILABLE	3,988
240	AT&T	

ALL SUITE SIZES ARE
ESTIMATED & MUST BE
CONFIRMED BY TENANT



Click image
for larger view

SUMMARY

AERIAL

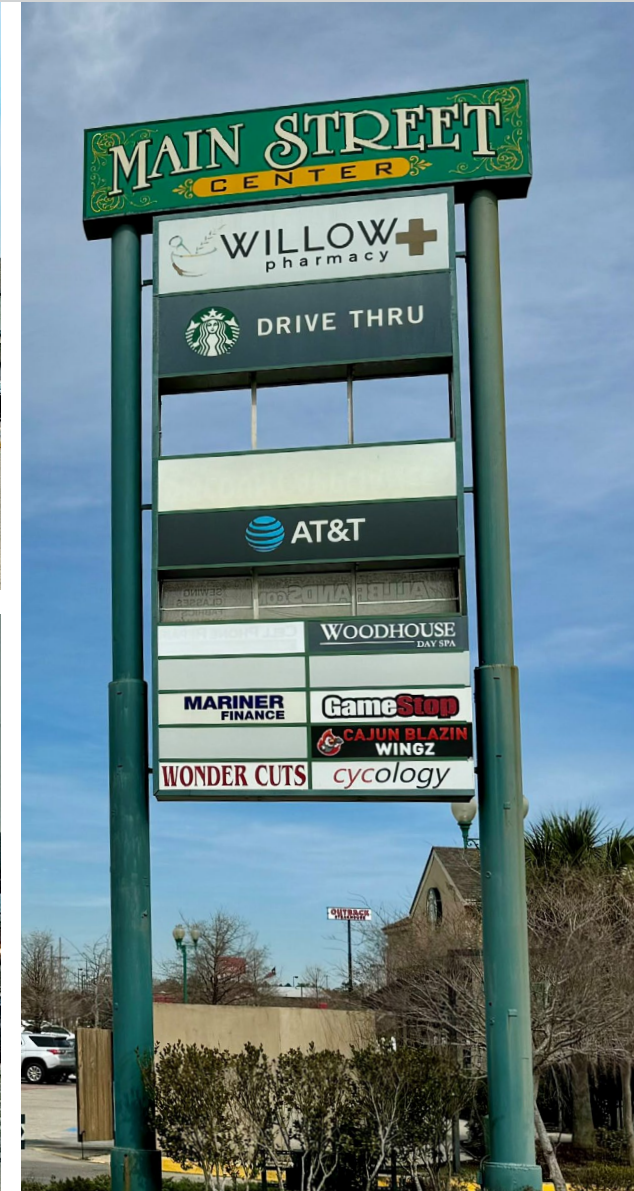
SITE PLAN

PROPERTY
PHOTOS

VACANT SUITE
PHOTOS

SUITE 150
LOD PLAN

DEMOGRAPHICS



SUMMARY

AERIAL

SITE PLAN

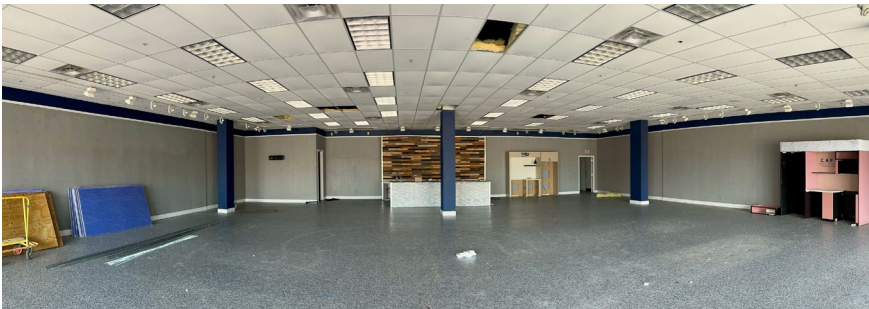
PROPERTY
PHOTOS

VACANT SUITE
PHOTOS

SUITE 150
LOD PLAN

DEMOGRAPHICS

SUITE 180 - 4,800 SF
FORMER DISCOUNT APPLIANCES



SUITE 230 - 3,939 SF
FORMER WOODHOUSE SPA



SUMMARY

AERIAL

SITE PLAN

PROPERTY
PHOTOS

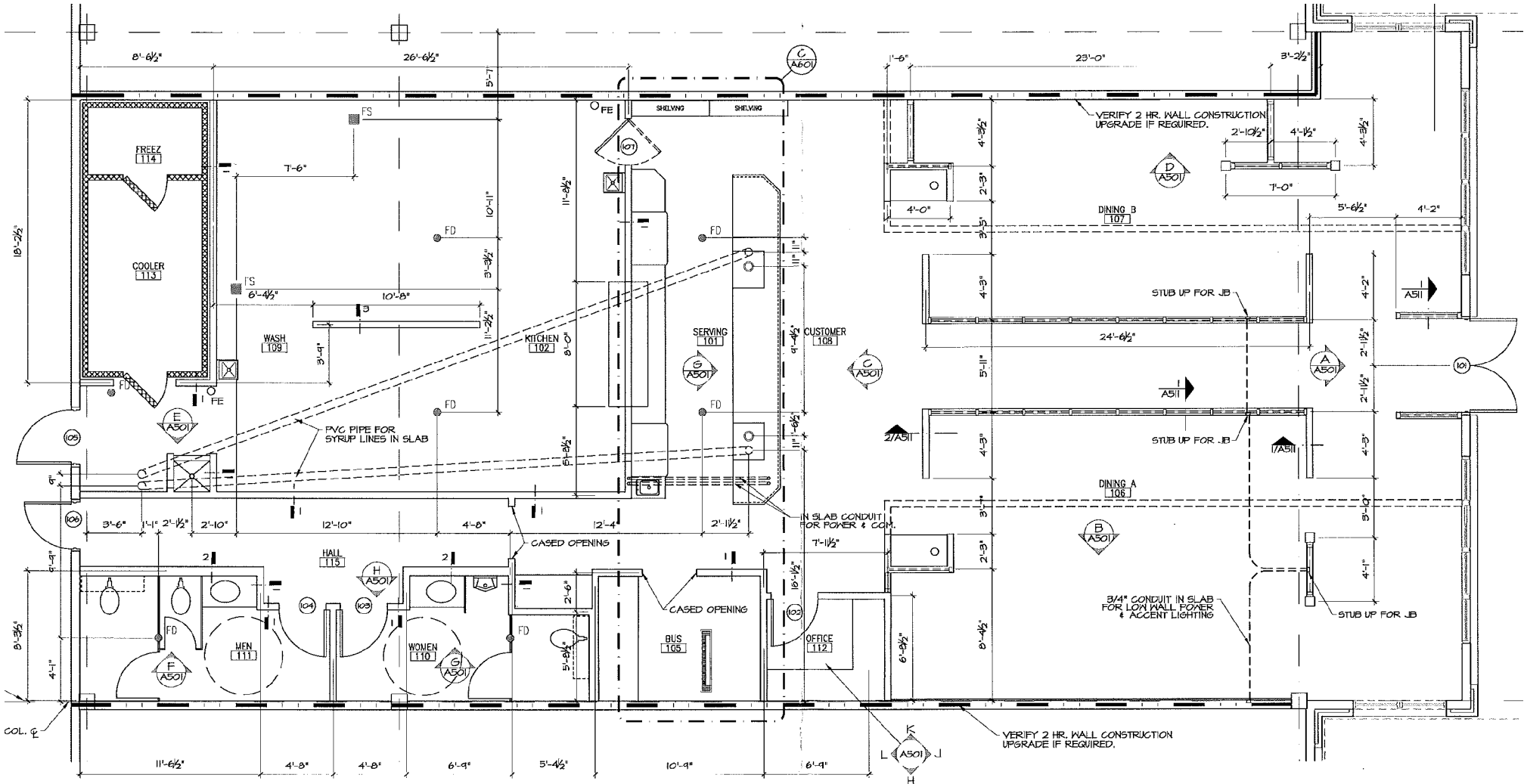
VACANT SUITE
PHOTOS

SUITE 150
LOD PLAN

DEMOGRAPHICS

SUITE 150 - McALISTER'S DELI LOD PLAN 3,580 SF

Click image for larger view



SUMMARY

AERIAL

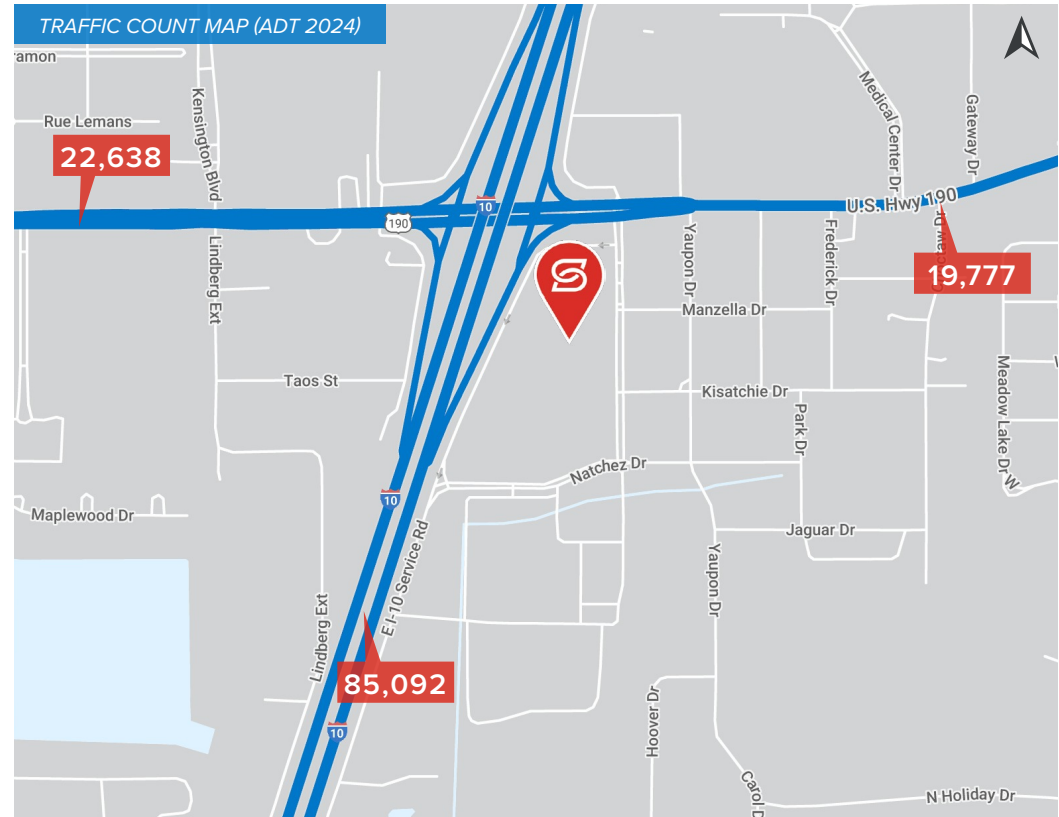
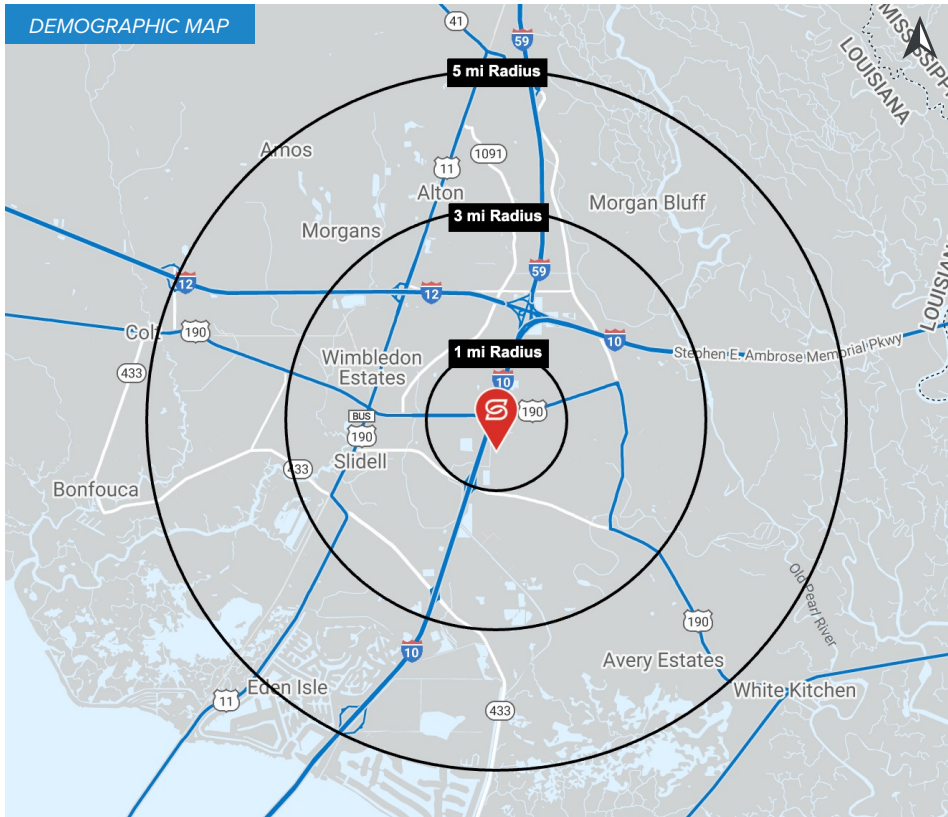
SITE PLAN

PROPERTY PHOTOS

VACANT SUITE PHOTOS

SUITE 150 LOD PLAN

DEMOGRAPHICS



2024 DEMOGRAPHICS

1 MILE

3 MILE

5 MILE



7,308

53,704

83,299

1 MILE

3 MILE

5 MILE



\$123,744

\$97,481

\$91,875

1 MILE

3 MILE

5 MILE



9,754

41,514

57,835