

Mount Pleasant Road

Highway 61

LAND FOR SALE

20414 Samuels Rd

Zachary, LA 70791

Presented By:

Jake Loach, CCIM
Commercial Sales & Leasing
O: 225.295.0800 | C: 256.724.2764

Will Champney
Commercial Sales & Leasing
O: 225.295.0800 | C: 225.229.3730

Michael Cashio, CCIM, SIOR
Commercial Sales & Leasing
O: 225.295.0800 | C: 225.247.9812



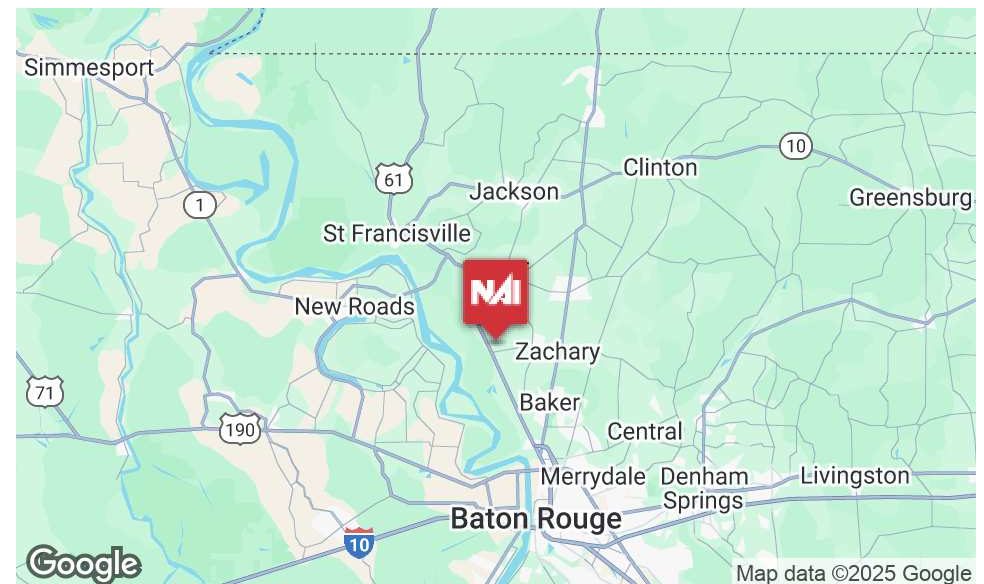
PROPERTY HIGHLIGHTS

- ±221 Acres of Vacant Land for Sale.
- Located on Highway 61 and Mount Pleasant Road, this property provides a multitude of potential uses whether it be a large tract user or retail development.
- Located less than 10 miles from Downtown Zachary.
- Mount Pleasant Road has recently seen residential development with Villages of Americana Neighborhood, and retail and commercial developments, such as Walk-Ons, Lit Pizza, and the Gerry Lane car dealership.

OFFERING SUMMARY

Sale Price: See Page 3 for Pricing Guidance

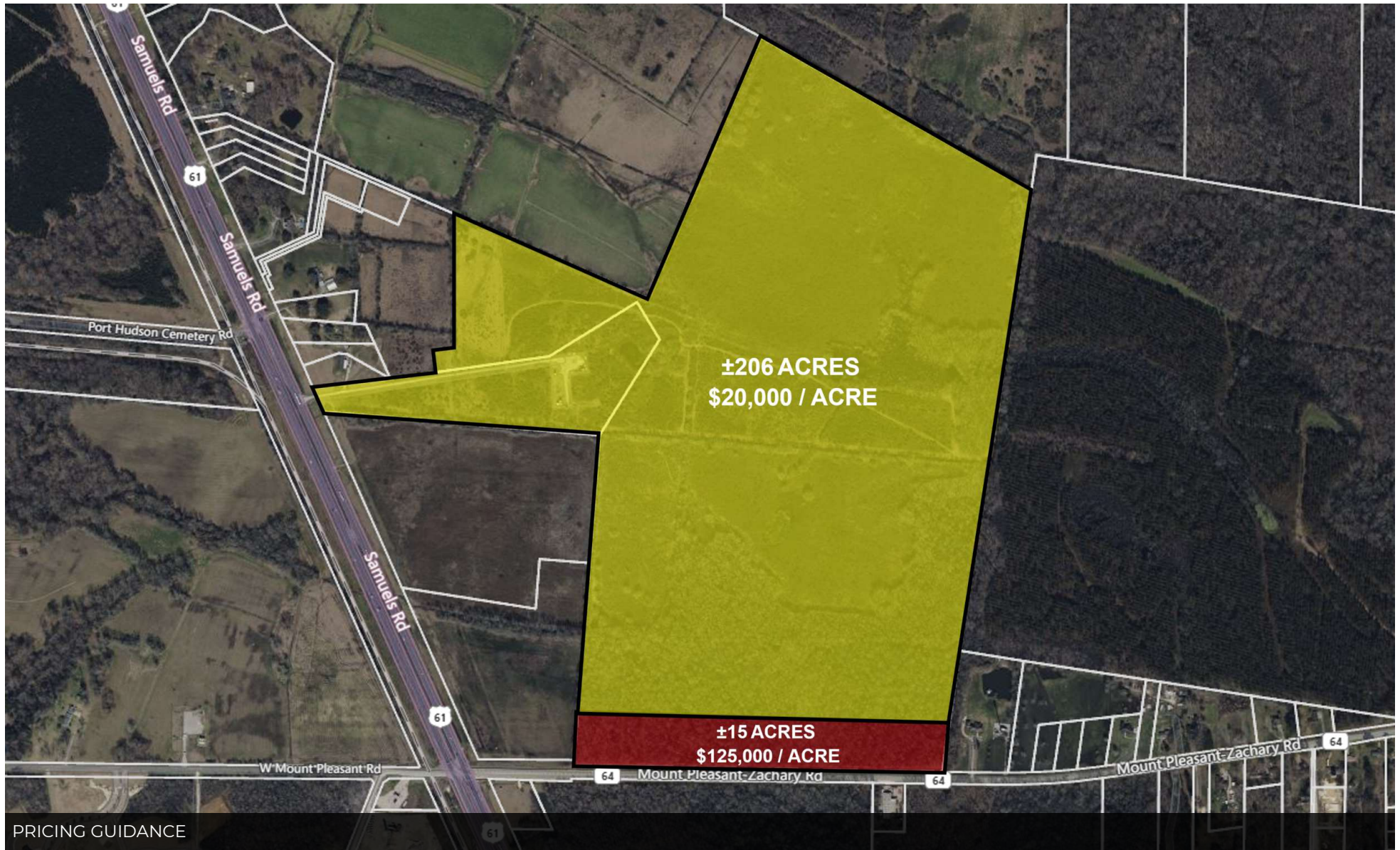
Lot Size: 221 Acres



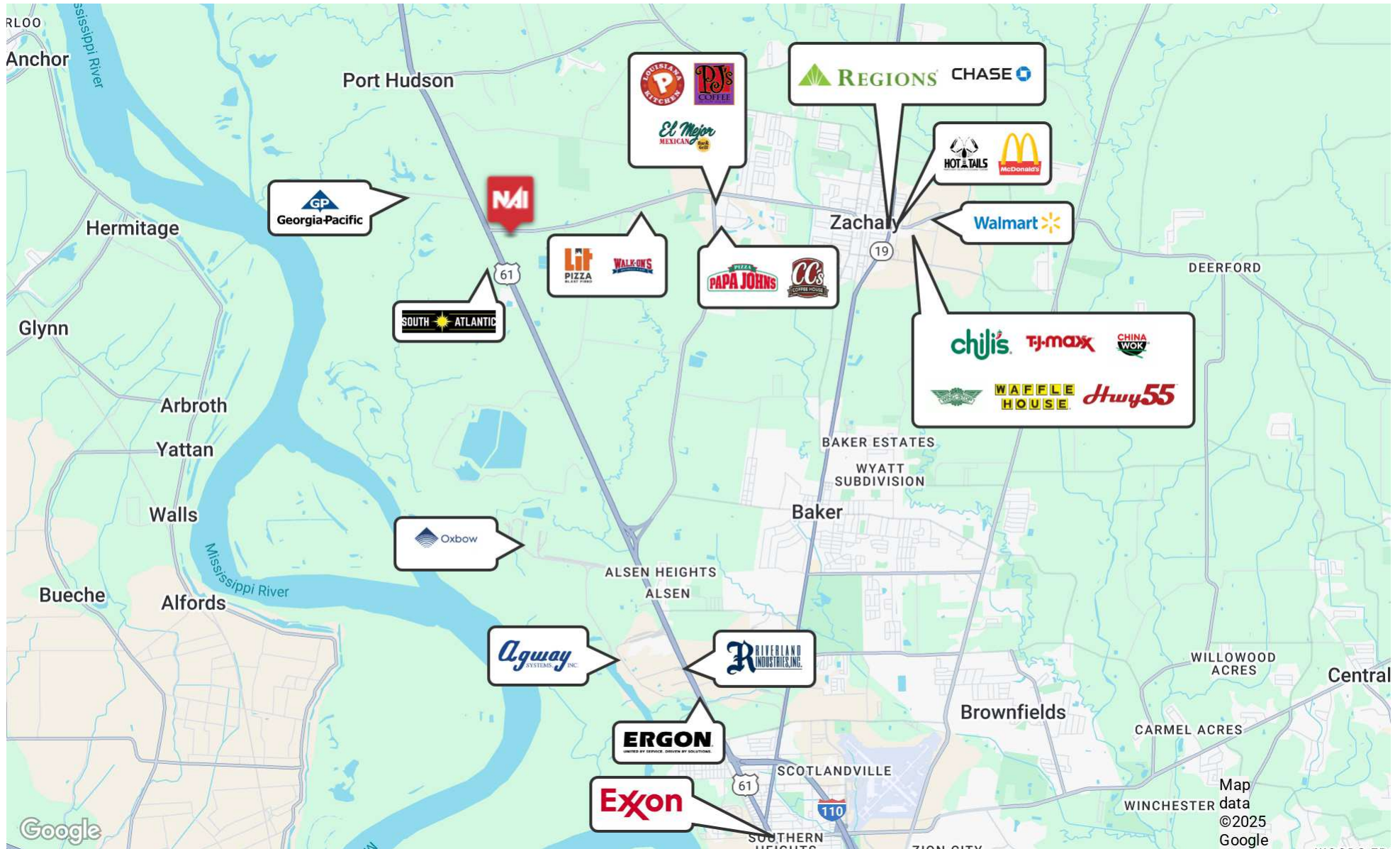
INFORMATION SUBJECT TO VERIFICATION & NO LIABILITY FOR ERRORS & OMISSION ASSUMED. // LICENSED IN LOUISIANA



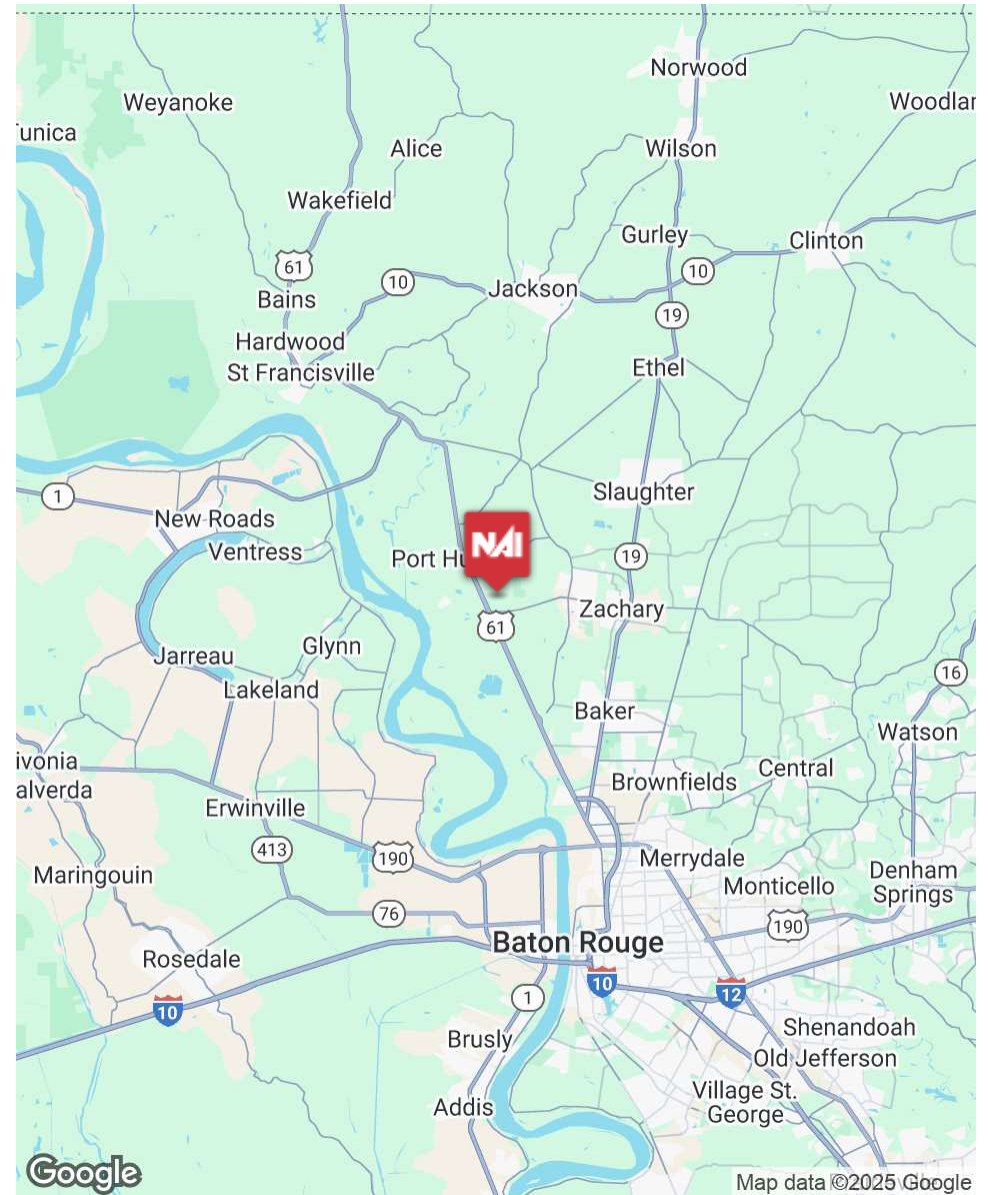
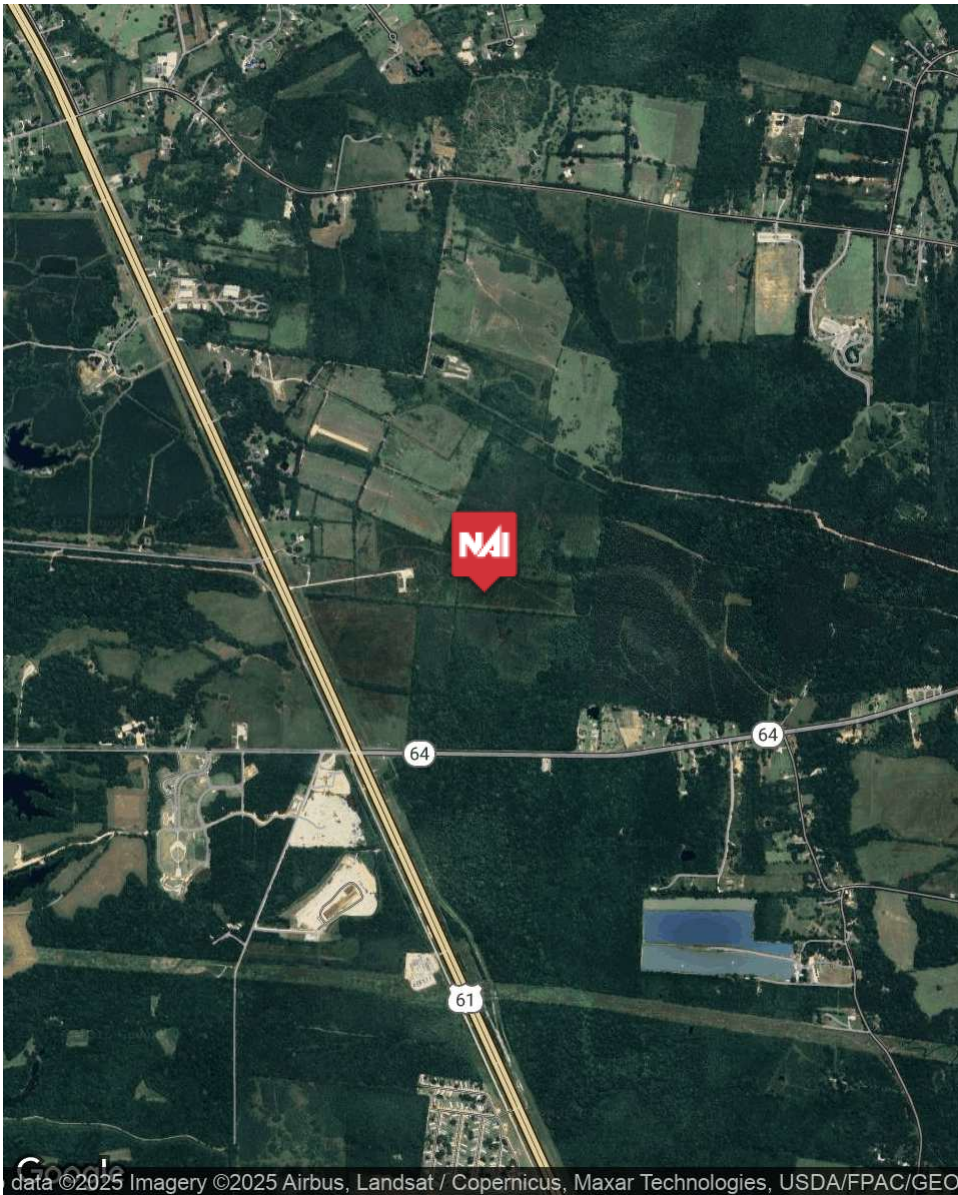
INFORMATION SUBJECT TO VERIFICATION & NO LIABILITY FOR ERRORS & OMISSION ASSUMED. // LICENSED IN LOUISIANA



INFORMATION SUBJECT TO VERIFICATION & NO LIABILITY FOR ERRORS & OMISSION ASSUMED. // LICENSED IN LOUISIANA



INFORMATION SUBJECT TO VERIFICATION & NO LIABILITY FOR ERRORS & OMISSION ASSUMED. // LICENSED IN LOUISIANA



INFORMATION SUBJECT TO VERIFICATION & NO LIABILITY FOR ERRORS & OMISSION ASSUMED. // LICENSED IN LOUISIANA



Highway 61

For More Information:

Jake Loach, CCIM

Commercial Sales & Leasing
O: 225.295.0800 | C: 256.724.2764
jakeloach@latterblum.com

Will Champney

Commercial Sales & Leasing
O: 225.295.0800 | C: 225.229.3730
wchampney@latterblum.com

Michael Cashio, CCIM, SIOR

Commercial Sales & Leasing
O: 225.295.0800 | C: 225.247.9812
mcashio@latterblum.com

NALatter&Blum

1700 City Farm Drive
Baton Rouge, LA 70806

www.latterblum.com