

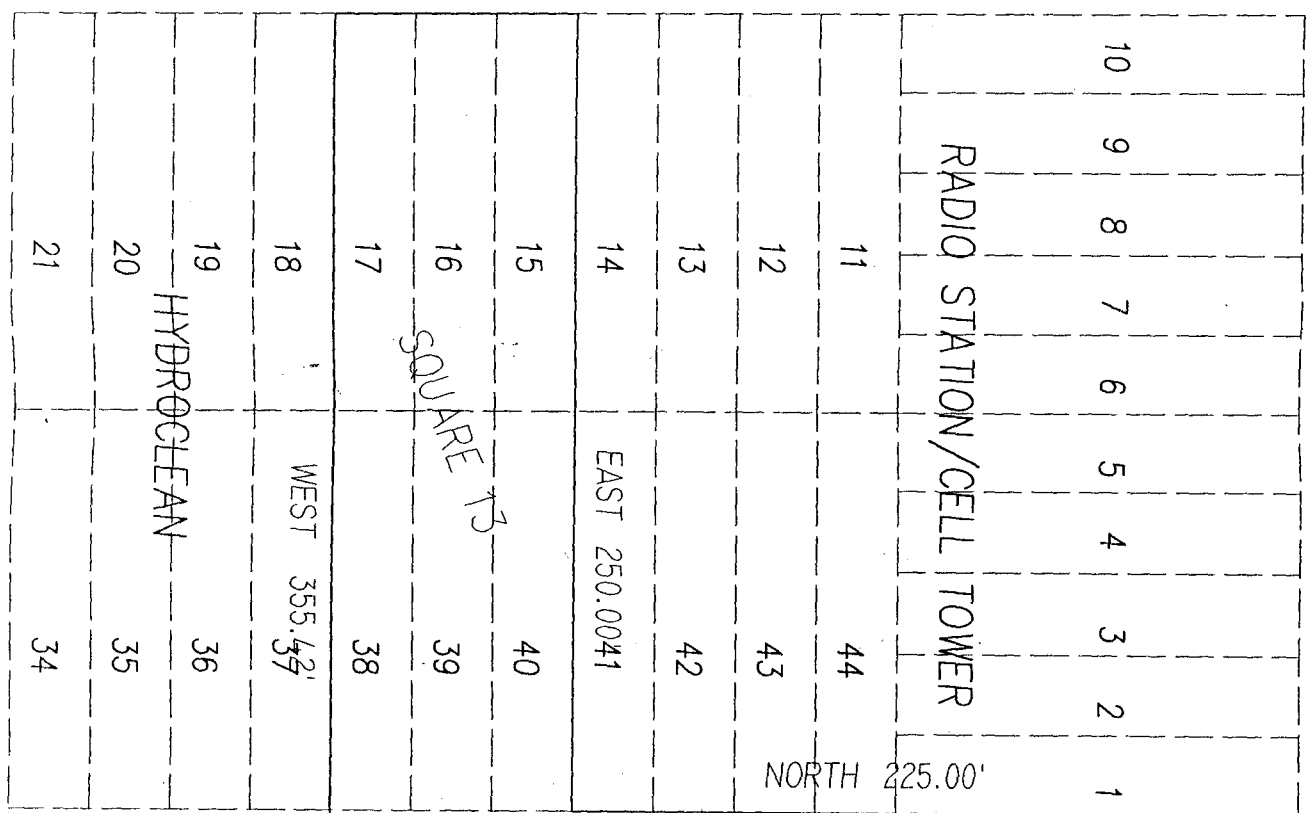
COAST BLVD.

EAST 211.66'



BEHRMAN AVENUE

NORTH 75.00'



NORTH 225.00'

FORMERLY DWYER AVENUE

AREA = 1.52± ACRES

S 19°30' W 318.26'

INTERST.

ALGIERS AVENUE (SIDE)

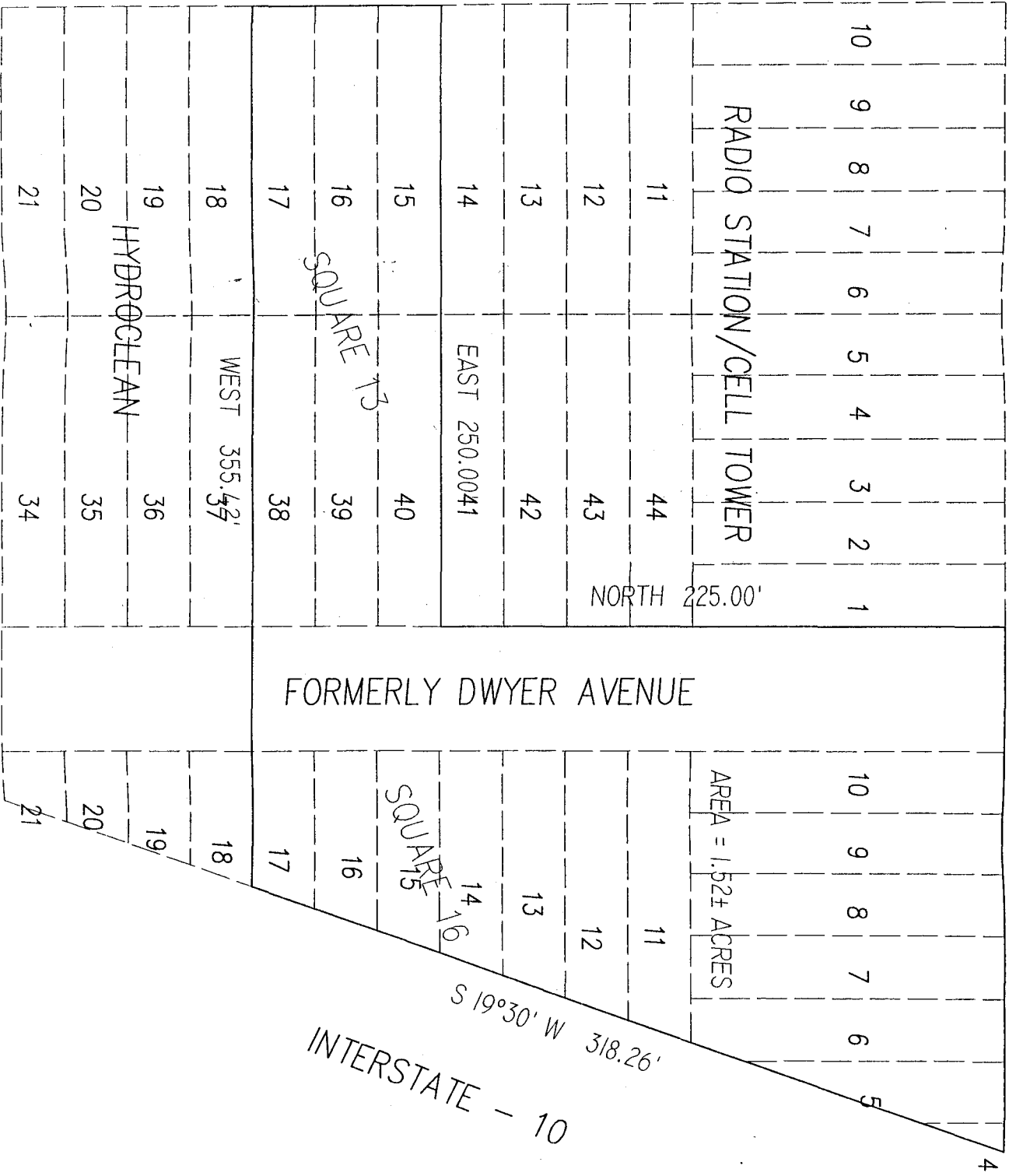
BEHRMAN AVENUE

NORTH 75.00'



COAST BLVD.

EAST 211.66'



ALGIERS AVENUE (SIDE)

J.V. BURKES & ASSOC., INC.
 2990 E. GULF BLVD. (904) 944-0078 SUITE LL 70481

SCALE: 1"=50'
 DATE: 12/2/2001
 DRAWN BY: SBB
 CHECKED BY: JVB

SKETCH OF 1.52± ACRES OF LAND LOCATED
 IN SQUARES 13, 14 & PORTION OF DWYER RD IN
 CENTRAL PARK SUBDIVISION LOCATED IN
 ST. TAMMANY PARISH, LOUISIANA
 FOR: BURKES PERSEPOLIS
 DWG. NO. 1010247

PATRIOT COOPERATIVE PERMILLAGE