



OFFICE SPACE FOR LEASE

Modern Office Space

11837 Bricksome Ave, Baton Rouge, LA 70816

Presented By:

Johnny Blount

Commercial Advisor

O: 225.295.0800 | C: 225.333.7173

jblount@latterblum.com



PROPERTY OVERVIEW

Located conveniently near South Sherwood Forest and I-12, these 20 newly remodeled office units offer the perfect blend of modern style and practical design. Your business can thrive in a space that has been updated for comfort and professionalism.

PROPERTY HIGHLIGHTS

- ±535 SF Of Office Space Available at 11837 Bricksome Avenue
- Private Entrances for Each Unit & Visible Exterior Signage
- Two Spacious Work Areas for Team Collaboration or Private Office Use
- Vaulted Ceilings & Large Windows Throughout
- Stylish Finishes Including Wood Tile Flooring & Updated Fixtures
- Private Restrooms & Kitchenettes in Each Unit
- Ample Storage Space Throughout

OFFERING SUMMARY

Lease Rate:	\$850.00 per month (Gross)
Available SF:	±535 SF
Lease Rate Includes:	Utilities & High Speed Internet

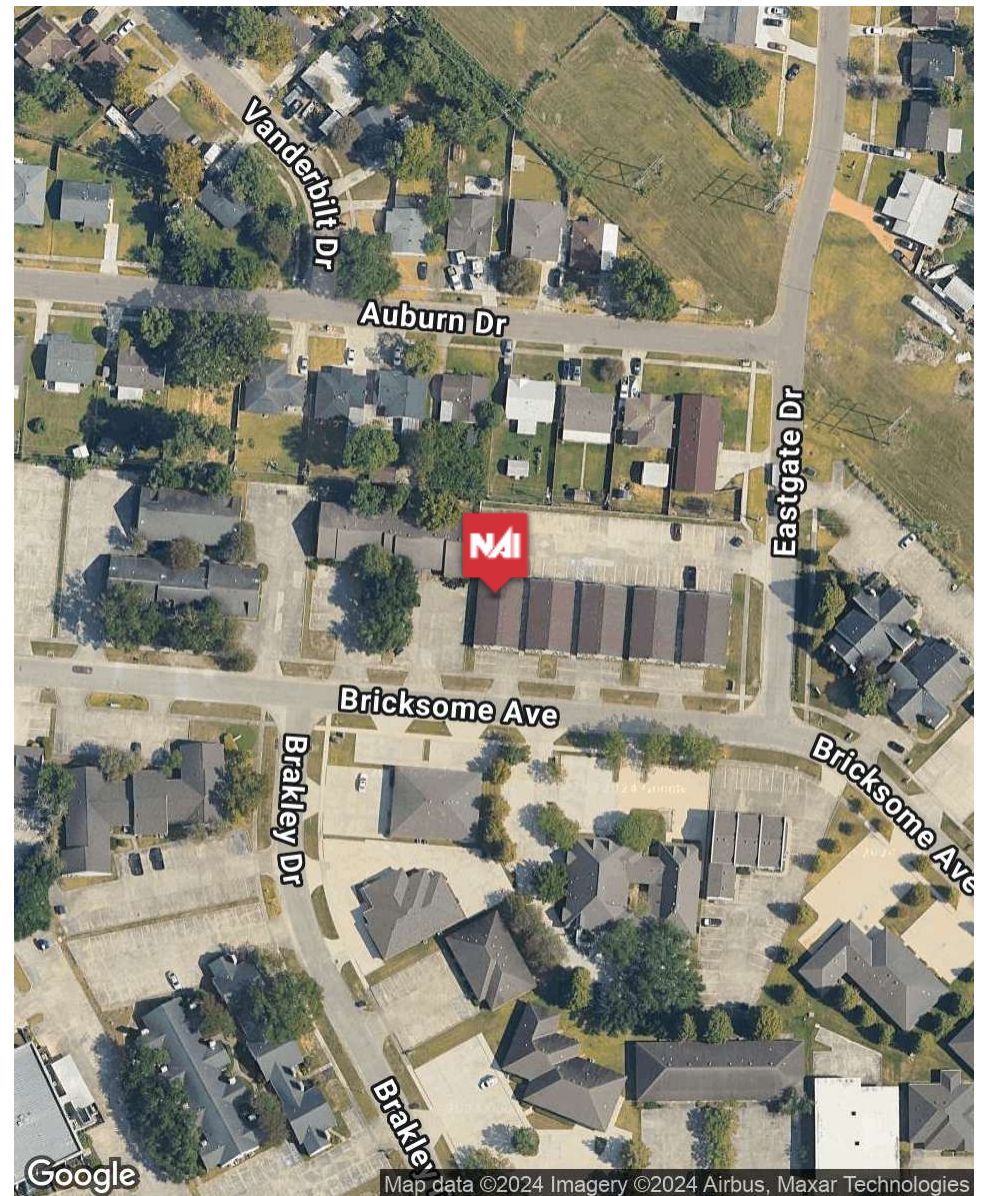
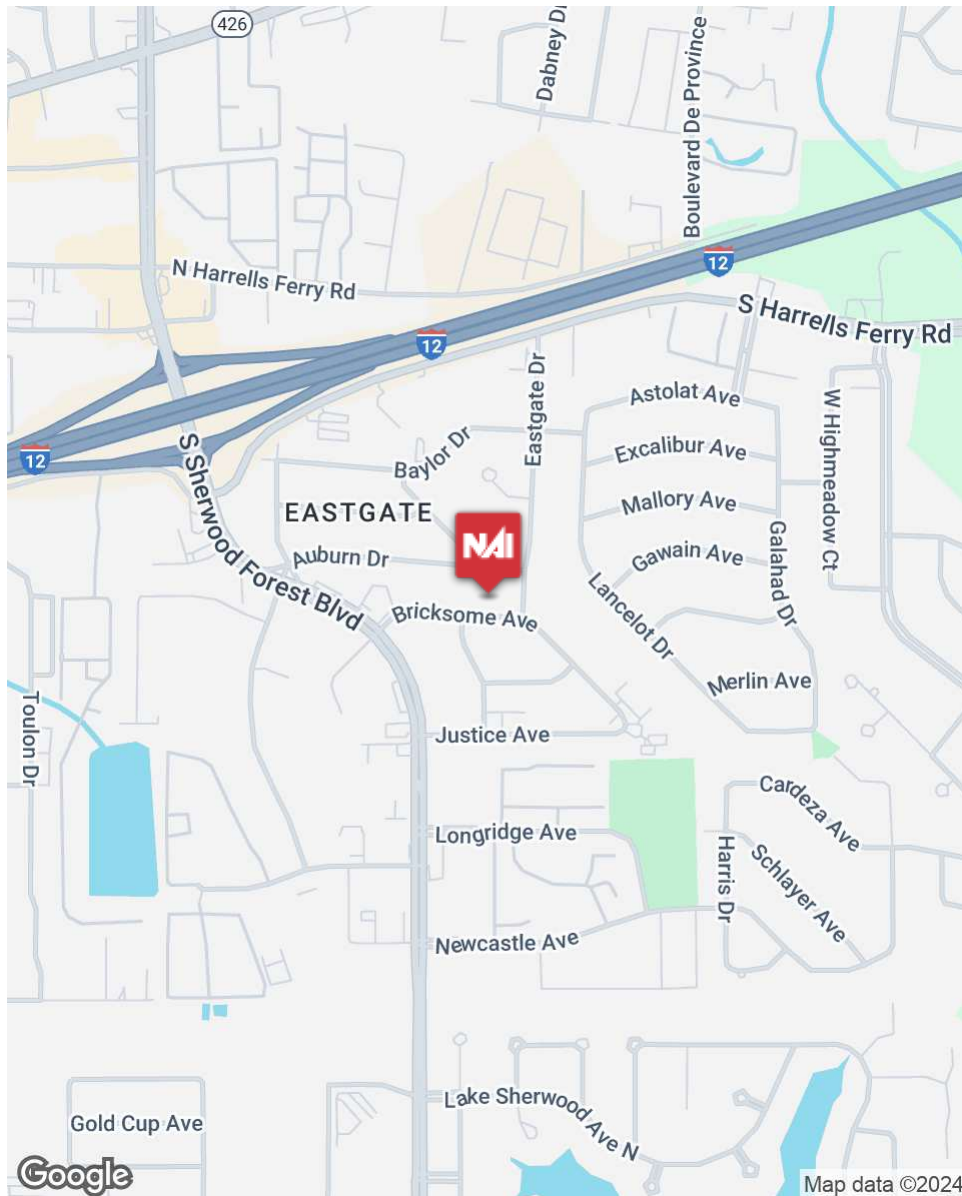
WHY CHOOSE THIS PROPERTY?

- **Turnkey Office Solutions:** Ready for immediate move-in with minimal setup.
- **Affordable & flexible lease terms** designed to suit your business needs
- **Convenient location** just minutes from I-12 and key commercial districts
- **Modern, relaxing workspaces** designed to boost productivity and comfort

INFORMATION SUBJECT TO VERIFICATION & NO LIABILITY FOR ERRORS & OMISSION ASSUMED. // LICENSED IN LOUISIANA



INFORMATION SUBJECT TO VERIFICATION & NO LIABILITY FOR ERRORS & OMISSION ASSUMED. // LICENSED IN LOUISIANA



INFORMATION SUBJECT TO VERIFICATION & NO LIABILITY FOR ERRORS & OMISSION ASSUMED. // LICENSED IN LOUISIANA

For More Information:

Johnny Blount

Commercial Advisor

O: 225.295.0800 | C: 225.333.7173

jblount@latterblum.com

NAILatter&Blum

1700 City Farm Drive
Baton Rouge, LA 70806

www.latterblum.com