



SOUTHWEST CORPORATE CENTER

9300 MANSFIELD ROAD, SHREVEPORT, LA 71118

- Three-story professional office building
- **SPACE AVAILABLE**
355 sq ft - 1,235 ± sq ft
- Great access to both Mansfield Road and Bert Kouns Industrial Loop
- Highly visible and prominent location in southwest Shreveport
- Generous parking and security system in building
- **Full service lease - monthly rent includes utilities, janitorial and maintenance**

OFFICE SPACE FOR LEASE



For more information, contact:

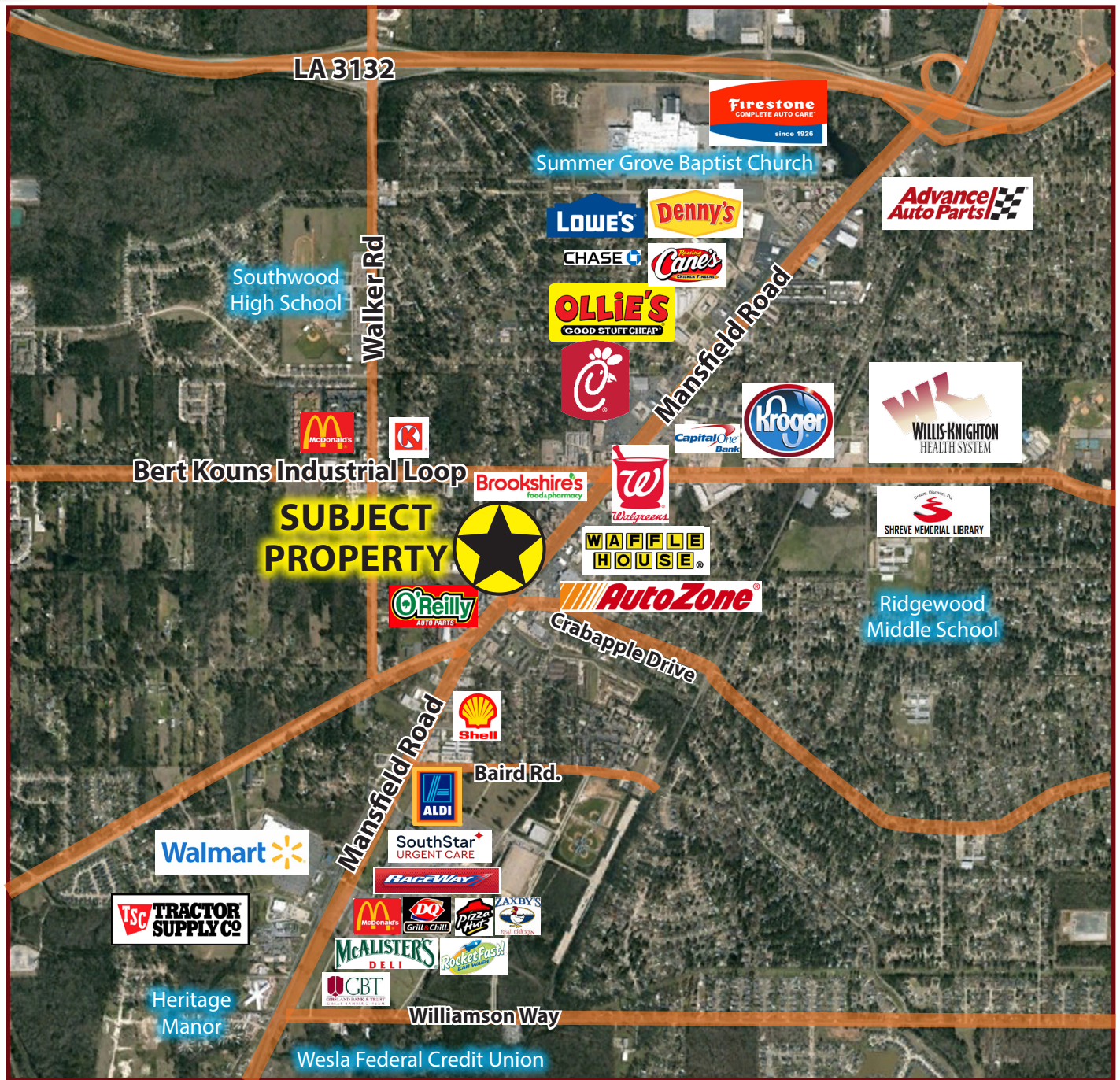
Michele Sauls, Associate Broker | 318.222.2244 | msauls@vintagerealty.com

ALL INFORMATION CONTAINED HEREIN IS BELIEVED TO BE ACCURATE, BUT IS NOT WARRANTED AND NO LIABILITY OF ERRORS OR OMISSIONS IS ASSURED BY EITHER THE PROPERTY OWNER OR VINTAGE REALTY COMPANY OR ITS AGENTS AND EMPLOYEES. PRICES AS STATED HEREIN AND PRODUCT AVAILABILITY IS SUBJECT TO CHANGE AND/OR SALE OR LEASE WITHOUT PRIOR NOTICE, AND ALL SIZES AND DIMENSIONS ARE SUBJECT TO CORRECTION. REV 8/2025



OFFICE SPACE FOR LEASE

9300 MANSFIELD ROAD
SHREVEPORT, LOUISIANA 71118



For information, please contact:

Michele Sauls, Associate Broker | 318-222-2244

msauls@vintagerealty.com | vintagerealty.com

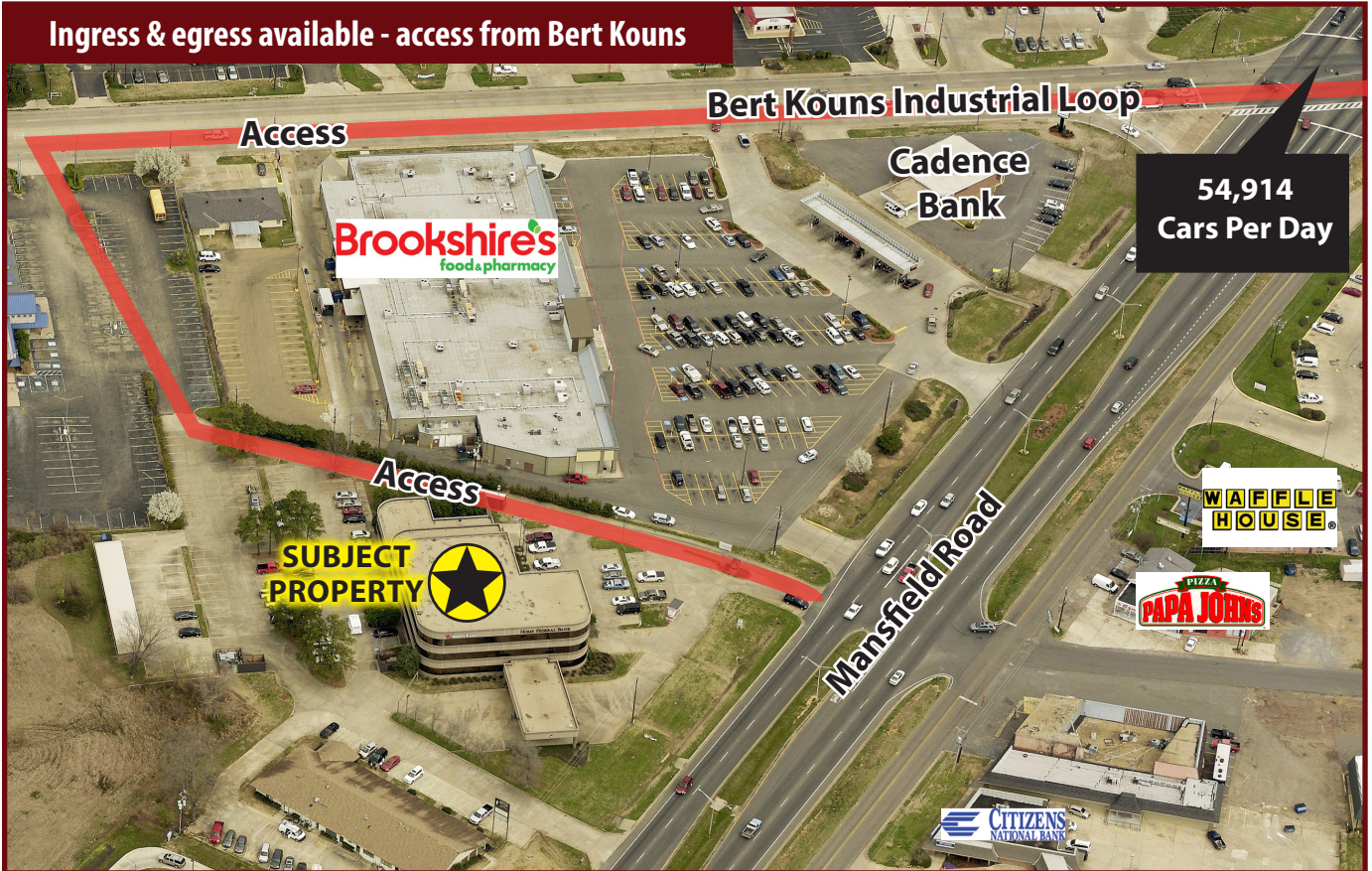
ALL INFORMATION CONTAINED HEREIN IS BELIEVED TO BE ACCURATE, BUT IS NOT WARRANTED AND NO LIABILITY OF ERRORS OR OMISSIONS IS ASSURED BY EITHER THE PROPERTY OWNER OR VINTAGE REALTY COMPANY OR ITS AGENTS AND EMPLOYEES. PRICES AS STATED HEREIN AND PRODUCT AVAILABILITY IS SUBJECT TO CHANGE AND/OR SALE OR LEASE WITHOUT PRIOR NOTICE, AND ALL SIZES AND DIMENSIONS ARE SUBJECT TO CORRECTION. 8/2025

OFFICE SPACE FOR LEASE

9300 MANSFIELD ROAD
SHREVEPORT, LOUISIANA 71118



Ingress & egress available - access from Bert Kouns



For information, please contact:

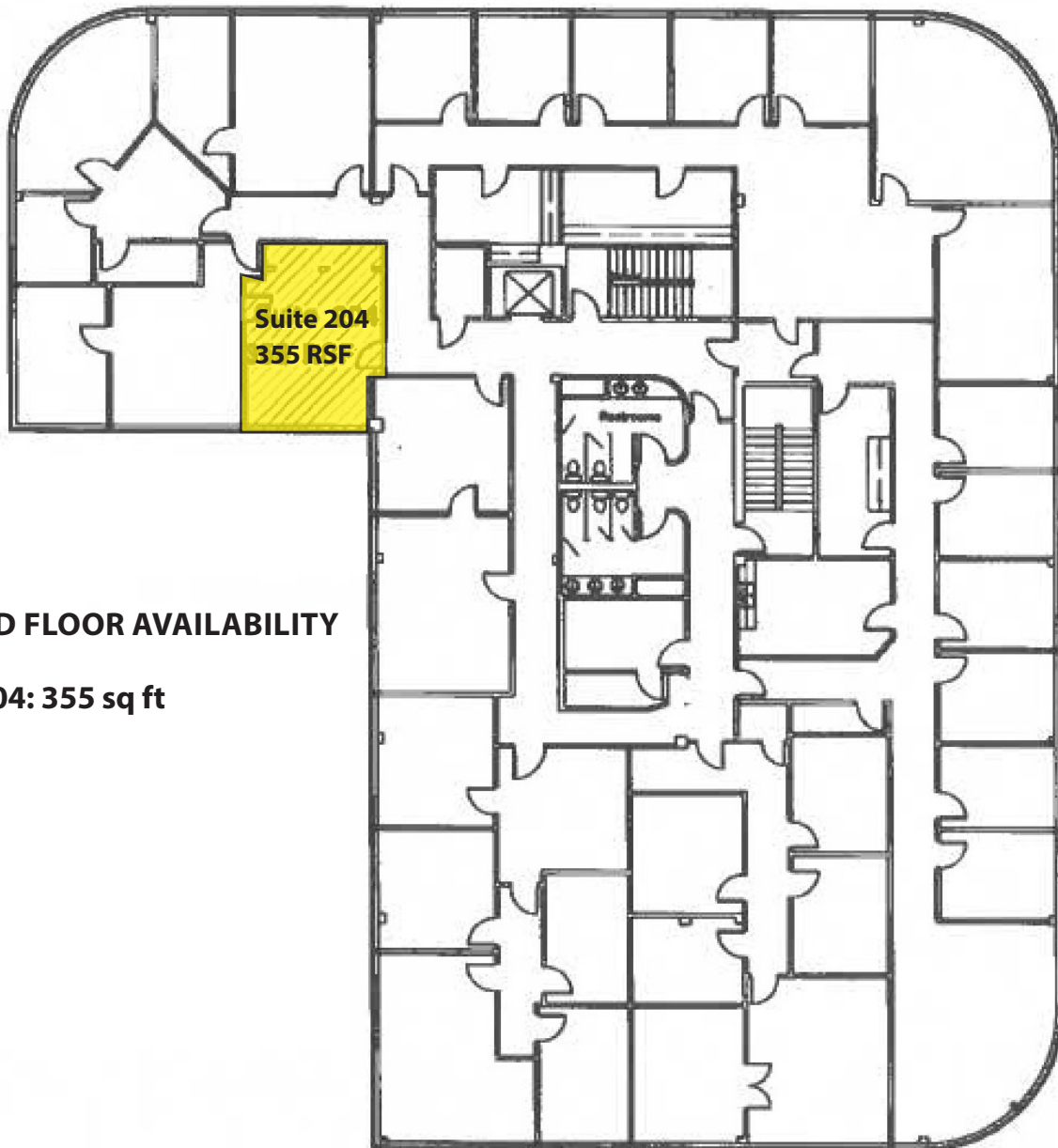
Michele Sauls, Associate Broker | 318-222-2244

msauls@vintagerealty.com | vintagerealty.com

ALL INFORMATION CONTAINED HEREIN IS BELIEVED TO BE ACCURATE, BUT IS NOT WARRANTED AND NO LIABILITY OF ERRORS OR OMISSIONS IS ASSURED BY EITHER THE PROPERTY OWNER OR VINTAGE REALTY COMPANY OR ITS AGENTS AND EMPLOYEES. PRICES AS STATED HEREIN AND PRODUCT AVAILABILITY IS SUBJECT TO CHANGE AND/OR SALE OR LEASE WITHOUT PRIOR NOTICE, AND ALL SIZES AND DIMENSIONS ARE SUBJECT TO CORRECTION. 8/2025

OFFICE SPACE FOR LEASE

9300 MANSFIELD ROAD
SHREVEPORT, LOUISIANA 71118



SECOND FLOOR AVAILABILITY

Suite 204: 355 sq ft



For information, please contact:

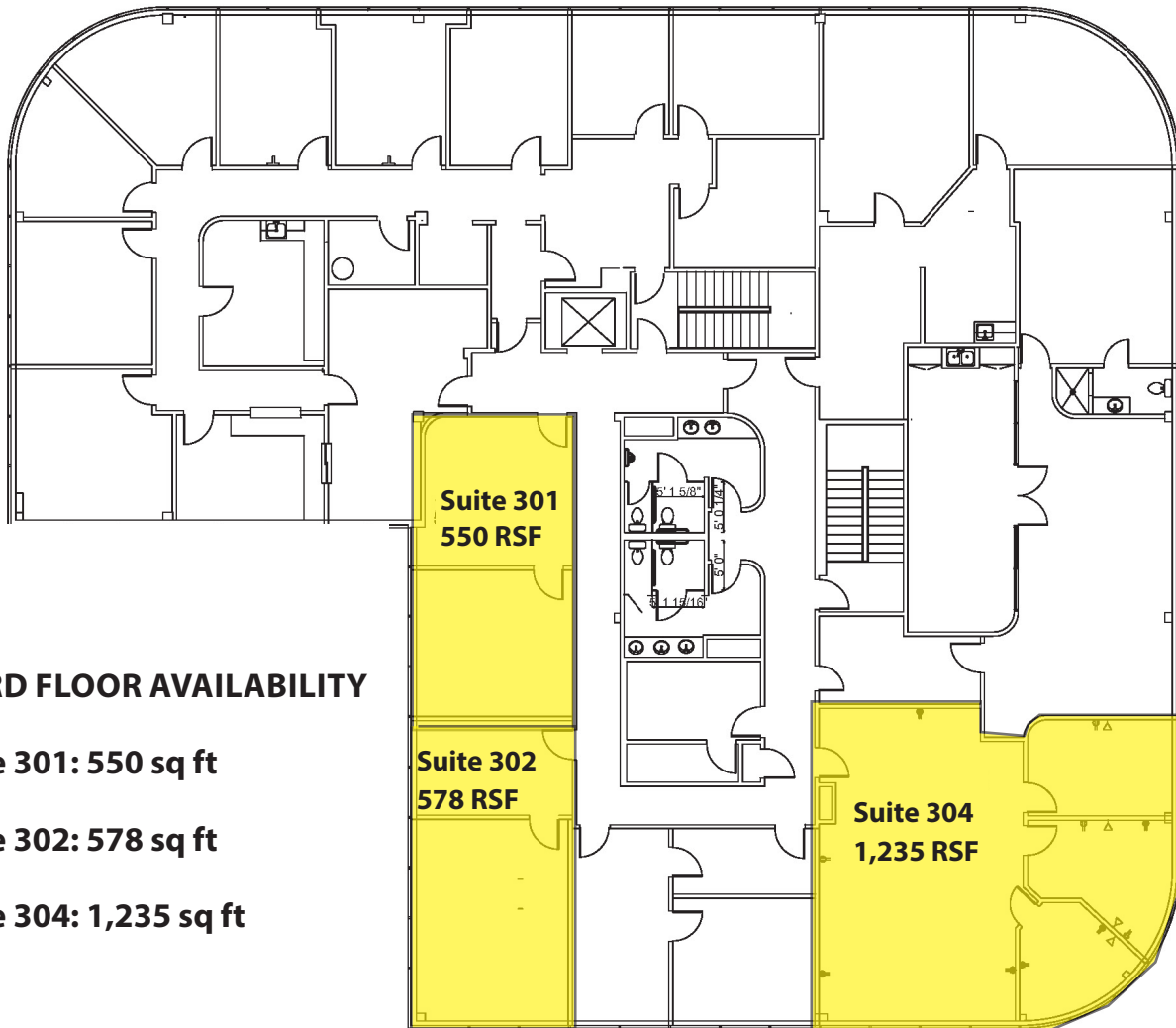
Michele Sauls, Associate Broker | 318-222-2244

msauls@vintagerealty.com | vintagerealty.com

ALL INFORMATION CONTAINED HEREIN IS BELIEVED TO BE ACCURATE, BUT IS NOT WARRANTED AND NO LIABILITY OF ERRORS OR OMISSIONS IS ASSURED BY EITHER THE PROPERTY OWNER OR VINTAGE REALTY COMPANY OR ITS AGENTS AND EMPLOYEES. PRICES AS STATED HEREIN AND PRODUCT AVAILABILITY IS SUBJECT TO CHANGE AND/OR SALE OR LEASE WITHOUT PRIOR NOTICE, AND ALL SIZES AND DIMENSIONS ARE SUBJECT TO CORRECTION. 8/2025

OFFICE SPACE FOR LEASE

9300 MANSFIELD ROAD
SHREVEPORT, LOUISIANA 71118



THIRD FLOOR AVAILABILITY

Suite 301: 550 sq ft

Suite 302: 578 sq ft

Suite 304: 1,235 sq ft



For information, please contact:

Michele Sauls, Associate Broker | 318-222-2244

msauls@vintagerealty.com | vintagerealty.com

ALL INFORMATION CONTAINED HEREIN IS BELIEVED TO BE ACCURATE, BUT IS NOT WARRANTED AND NO LIABILITY OF ERRORS OR OMISSIONS IS ASSURED BY EITHER THE PROPERTY OWNER OR VINTAGE REALTY COMPANY OR ITS AGENTS AND EMPLOYEES. PRICES AS STATED HEREIN AND PRODUCT AVAILABILITY IS SUBJECT TO CHANGE AND/OR SALE OR LEASE WITHOUT PRIOR NOTICE, AND ALL SIZES AND DIMENSIONS ARE SUBJECT TO CORRECTION. 8/2025