

SUMMARY

LAND FOR SALE

AVAILABLE PARCELS

- 1717 McKinney Rd. 6.9 Acres \$945,000
- 1598 McKinney Rd. 11.3 Acres \$1,560,000

PURCHASING OPTIONS

- If 1717 & 1598 McKinney Rd are purchased together the sales price is \$2,500,000.
- If 1717 & 1598 McKinney Rd and 1514 Lindberg Dr. are purchased together the sales price is \$3,650,000

PROPERTY OVERVIEW

These prime parcels present an exceptional development opportunity in the city of Slidell, Louisiana. Located just north of Fremaux Town Center, this property benefits from proximity to a vibrant mix of retail, dining, businesses, and residential apartments, making it ideal for a variety of development projects.

KEY HIGHLIGHTS

- Accessibility:** Convenient access to I-10 ensures excellent connectivity to the broader Slidell area and beyond.
- Nearby Amenities:** Close to Fremaux Medical Center, Fremaux Town Center, and other essential services

TRAFFIC COUNT (ADT 2024)

- On Interstate 10, south of site: 84,859

AERIAL

AREA OVERVIEW

DEMOGRAPHICS

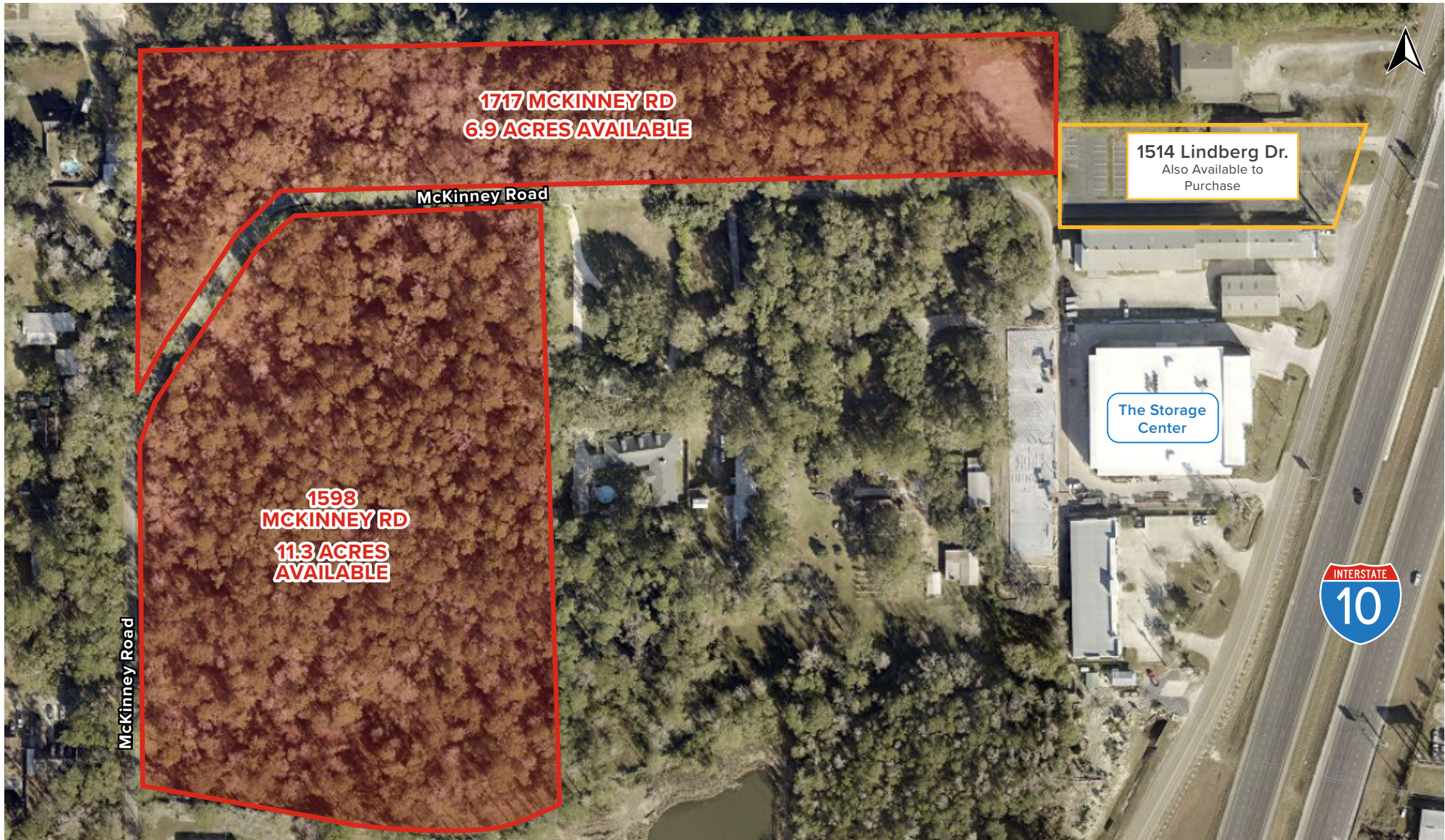


SUMMARY

AERIAL

AREA OVERVIEW

DEMOGRAPHICS

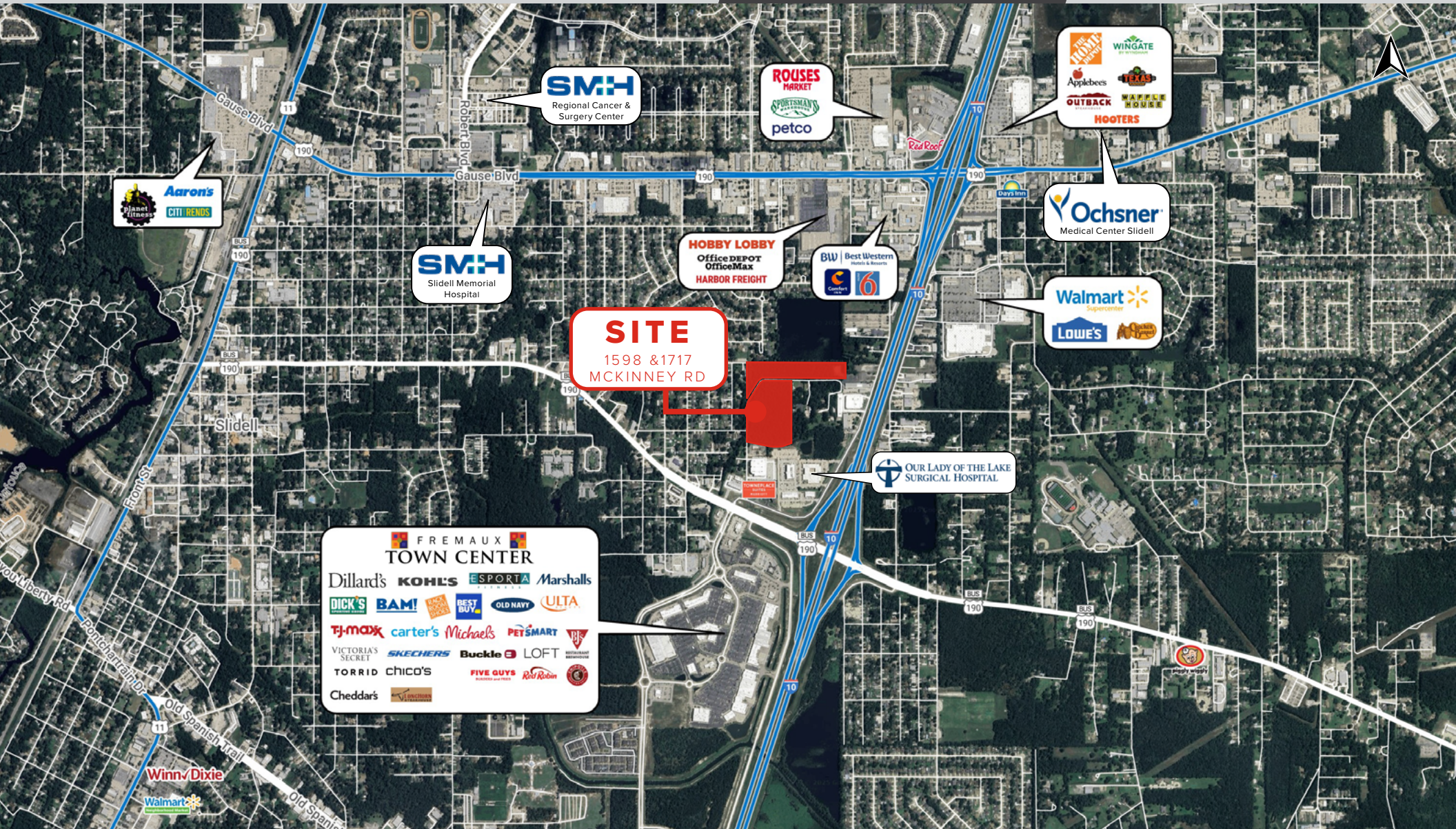


SUMMARY

AERIAL

AREA OVERVIEW

DEMOGRAPHICS

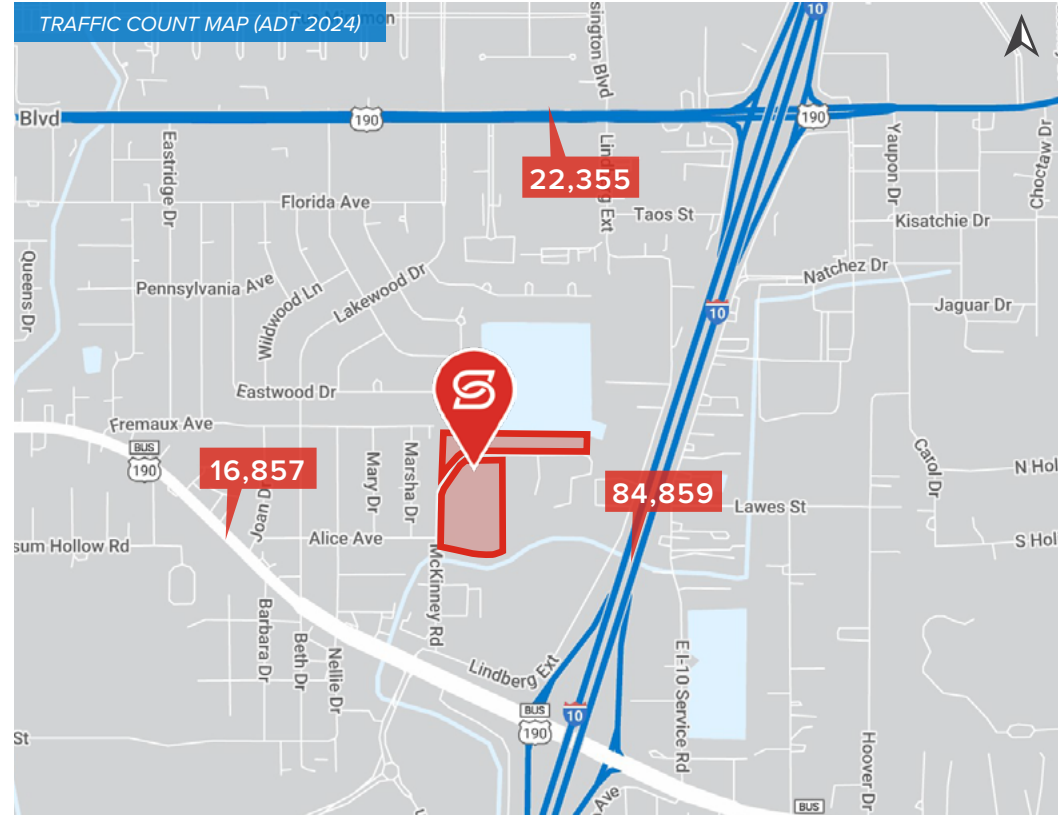
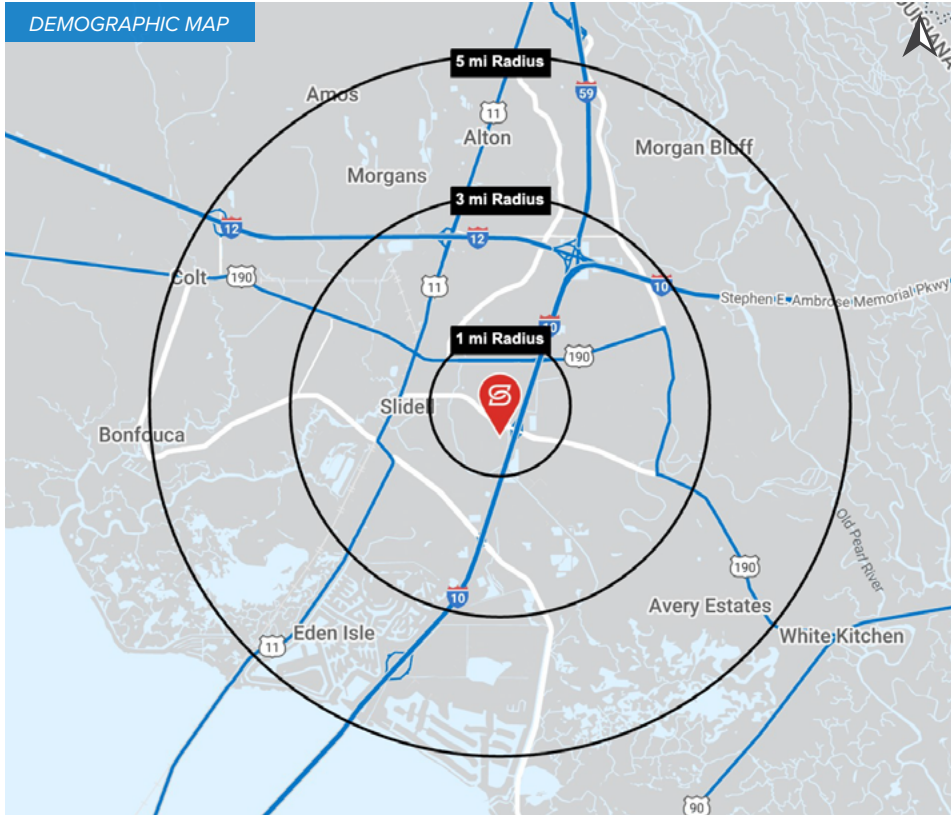


SUMMARY

AERIAL

AREA OVERVIEW

DEMOGRAPHICS



2024 DEMOGRAPHICS

1 MILE

3 MILE

5 MILE



POPULATION

6,549

54,420

89,925

1 MILE

3 MILE

5 MILE



AVG. HH
INCOME

\$74,092

\$92,416

\$97,589

1 MILE

3 MILE

5 MILE



HOUSEHOLDS

2,894

21,200

35,334