

TOWN AND COUNTRY PLAZA

HAMMOND, LA



grooming
adoptions
dog training
vet clinic

stirling

SUMMARY

RETAIL MAP

AERIAL

WEST SITE PLAN

EAST SITE PLAN

PHOTOS

DEMOGRAPHICS



FOR LEASE

PROPERTY OVERVIEW

Town and Country Plaza is a prominent shopping center located on W Thomas St, just west of the signalized intersection with S Morrison Blvd, providing excellent accessibility and visibility. Situated in the heart of Hammond, LA, the center is less than 10 minutes from Southeastern Louisiana University, home to approx. 14,400 students.

This grocery-anchored shopping center features ample parking and a strong lineup of national tenants, including Ross, Petco, CVS, Office Depot, Starbucks, and Sherwin Williams, making it a key retail destination in the area. With over 1.9 million annual visitors (PlacerAI, 2023), Town and Country Plaza enjoys strong foot traffic and consistent customer activity.

APPROXIMATE GLA

- 1,175–31,533 ± SF

TRAFFIC COUNT (ADT 2023)

- On W Thomas St, east of site: 17,800
- On S Morrison Blvd St, south of site: 26,016



SUMMARY

RETAIL MAP

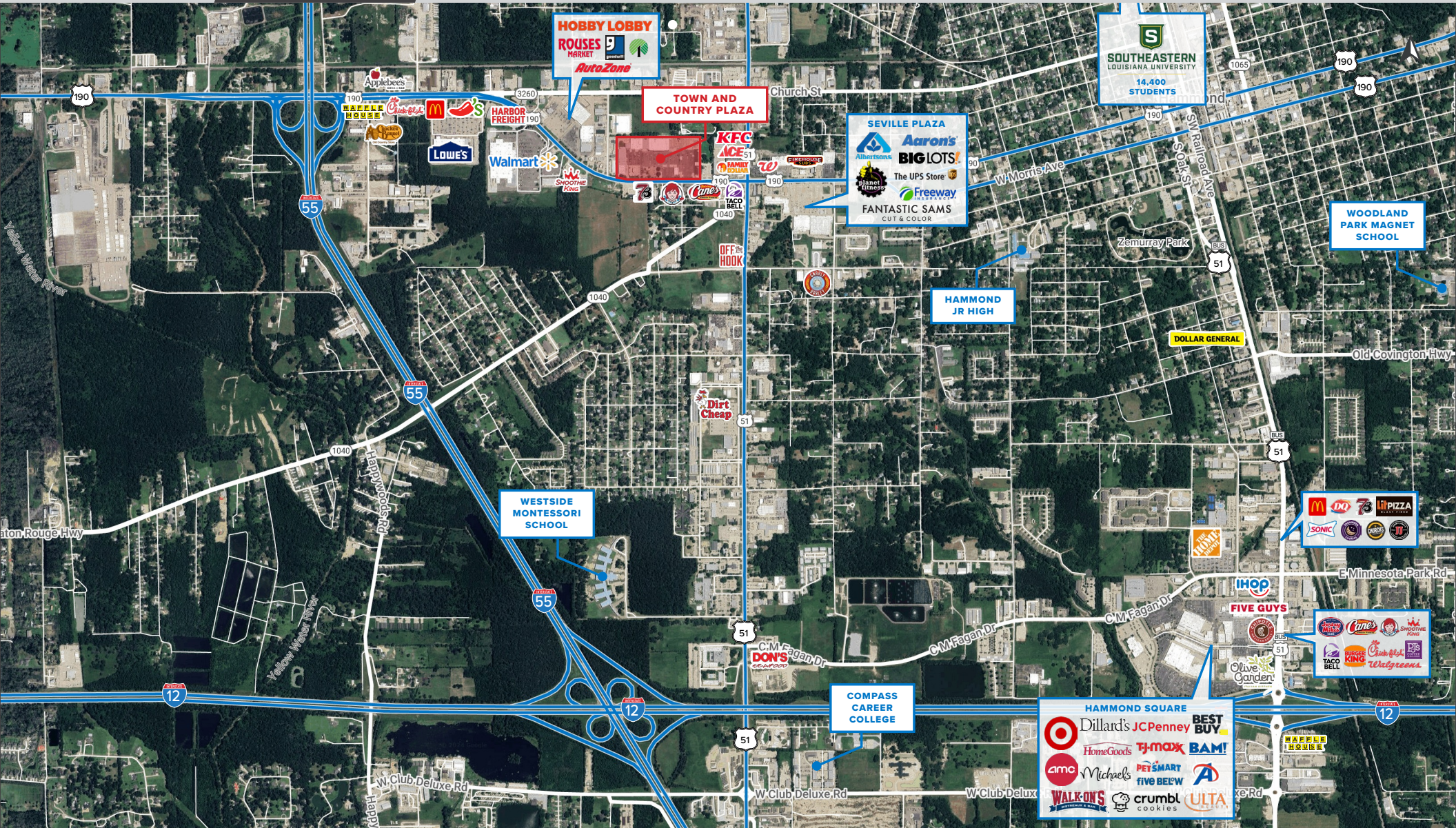
AERIAL

WEST
SITE PLAN

EAST
SITE PLAN

PHOTOS

DEMOGRAPHICS



stirling

SETH CITRON

Office: 337-234-4481

Direct: 337-572-0273

scitron@stirlingprop.com

RICKY SCHOB

Office: 225-926-4481

Direct: 225-329-0281

rschober@stirlingprop.com

TOWN AND COUNTRY PLAZA

2270 W Thomas St, Hammond, LA

SUMMARY

RETAIL MAP

AERIAL

WEST
SITE PLAN

EAST
SITE PLAN

PHOTOS

DEMOGRAPHICS



CenterWell Home Health
CHECK INTO CASH
Direct AUTO INSURANCE
HIS & HERS FASHION
MIRAJ HAIR SALON
baskinBRobbins
cricket
MODERN NAILS

SUMMARY

RETAIL MAP

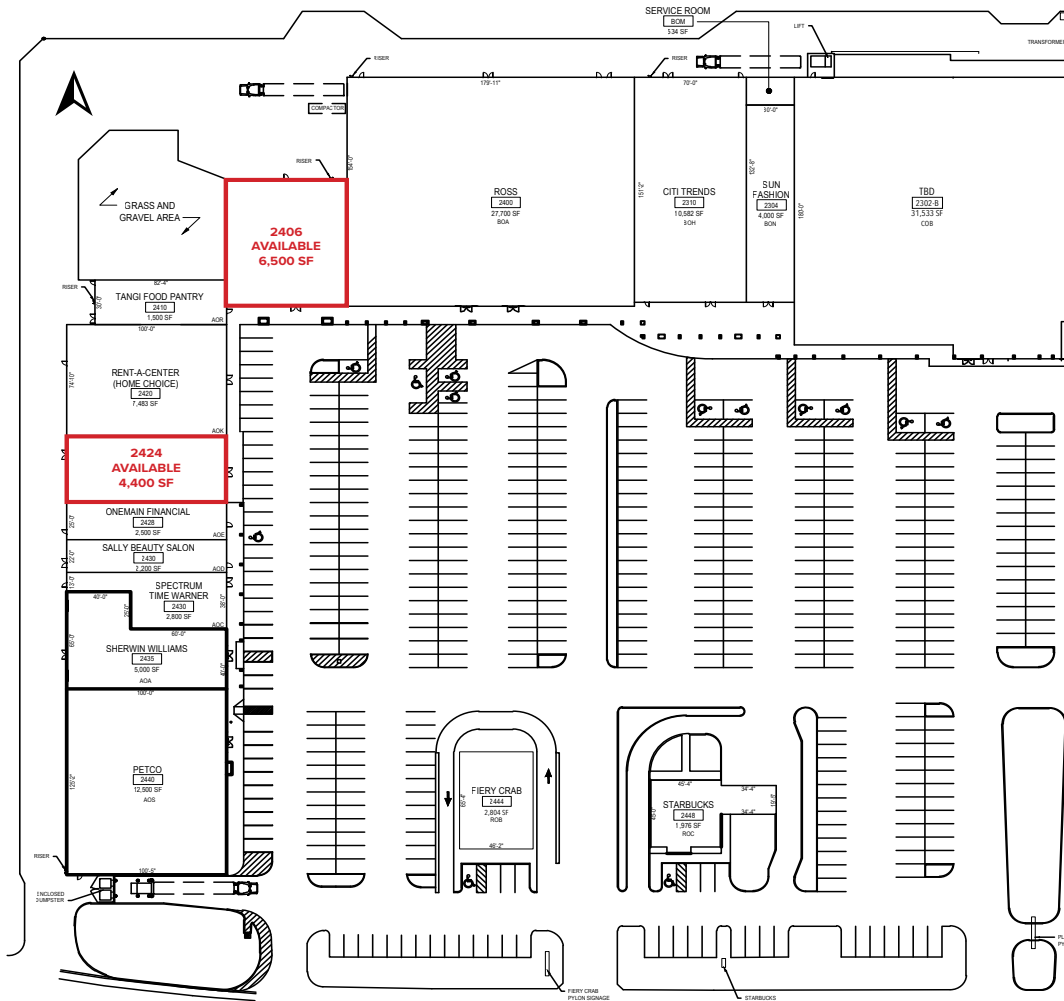
AERIAL

WEST
SITE PLAN

EAST
SITE PLAN

PHOTOS

DEMOGRAPHICS



WEST SIDE TENANTS

2448. Starbucks	1,976 SF
2444. Fiery Crab	2,804 SF
2440. Petco	12,500 SF
2435. Sherwin Williams	5,000 SF
2430. Spectrum Time Warner	2,800 SF
2430. Sally Beauty	2,200 SF
2428. Onemain Financial	2,500 SF
2424. AVAILABLE	4,400 SF
2420. Rent-a-Center (Home Choice)	7,483 SF
2410. Tangi Food Pantry	1,500 SF
2406. AVAILABLE	6,500 SF
2400. Ross	27,700 SF
2310. Citi Trends	10,582 SF
2304. Sun Fashion	4,000 SF
2302-B. TBD	31,533 SF

SUMMARY

RETAIL MAP

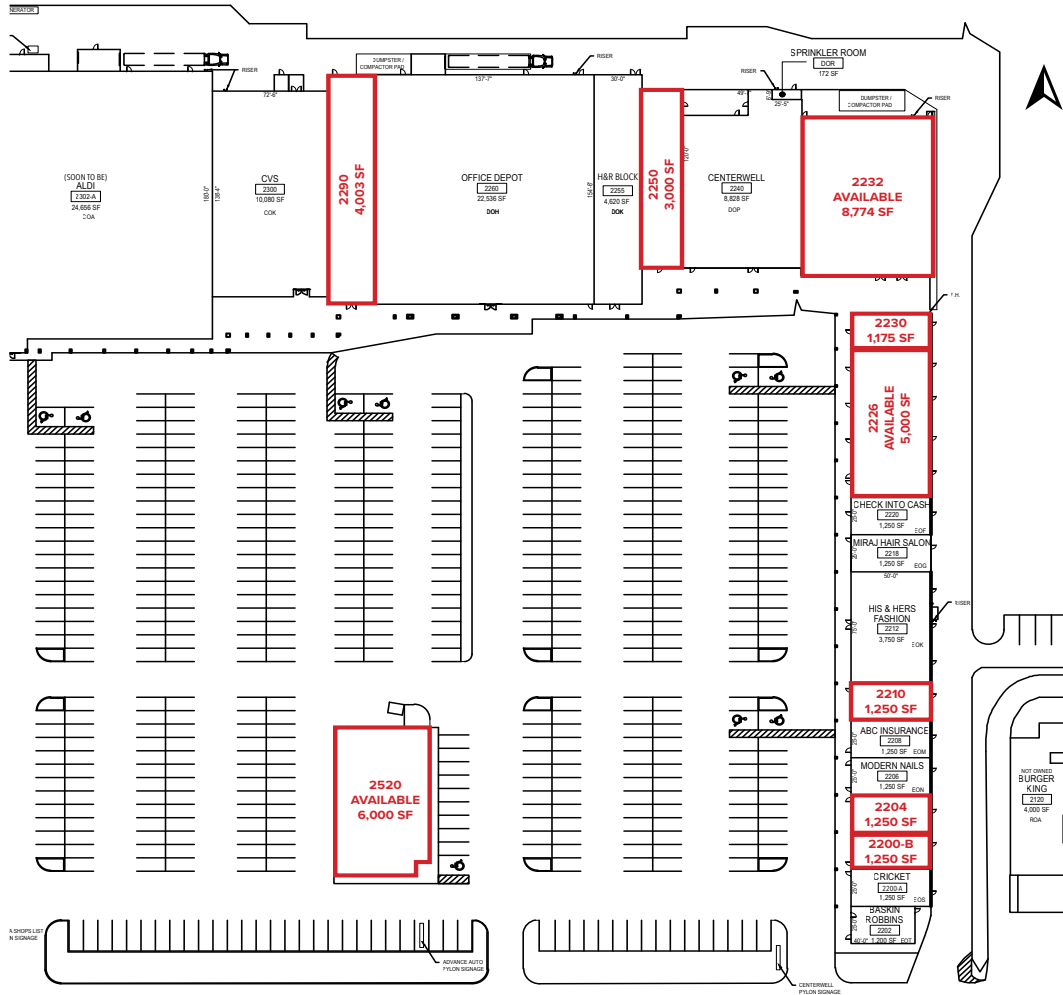
AERIAL

WEST
SITE PLAN

EAST
SITE PLAN

PHOTOS

DEMOGRAPHICS



EAST SIDE TENANTS

2302-A. Aldi (Coming Soon)	24,656 SF
2300. CVS	10,080 SF
2290. AVAILABLE	4,003 SF
2260. Office Depot	22,536 SF
2255. H&R Block	4,620 SF
2250. AVAILABLE	3,000 SF
2240. Centerwell	8,828 SF
2232. AVAILABLE	8,774 SF
2230. AVAILABLE	1,175 SF
2226. AVAILABLE	5,000 SF
2220. Check Into Cash	1,250 SF
2218. Miraj Hair Salon	1,250 SF
2212. His & Hers Fashion	3,750 SF
2210. AVAILABLE	1,250 SF
2208. ABC Insurance	1,250 SF
2206. Modern Nails	1,250 SF
2204. AVAILABLE	1,250 SF
2200-B. AVAILABLE	1,250 SF
2200-A. Cricket Wireless	1,250 SF
2202. Baskin Robbins	1,200 SF
2520. AVAILABLE	6,000 SF

stirling

SETH CITRON

Office: 337-234-4481

Direct: 337-572-0273

scitron@stirlingprop.com

RICKY SCHOB

Office: 225-926-4481

Direct: 225-329-0281

rschober@stirlingprop.com

TOWN AND COUNTRY PLAZA

2270 W Thomas St, Hammond, LA

SUMMARY

RETAIL MAP

AERIAL

WEST
SITE PLAN

EAST
SITE PLAN

PHOTOS

DEMOGRAPHICS



SUMMARY

RETAIL MAP

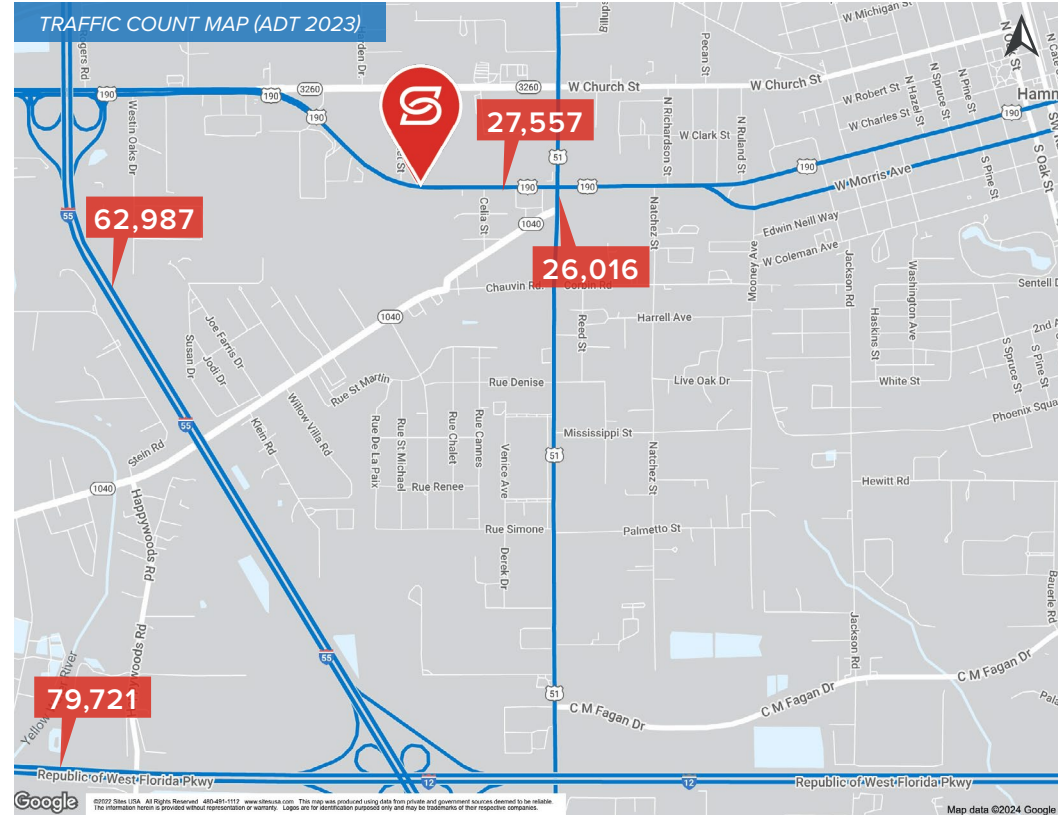
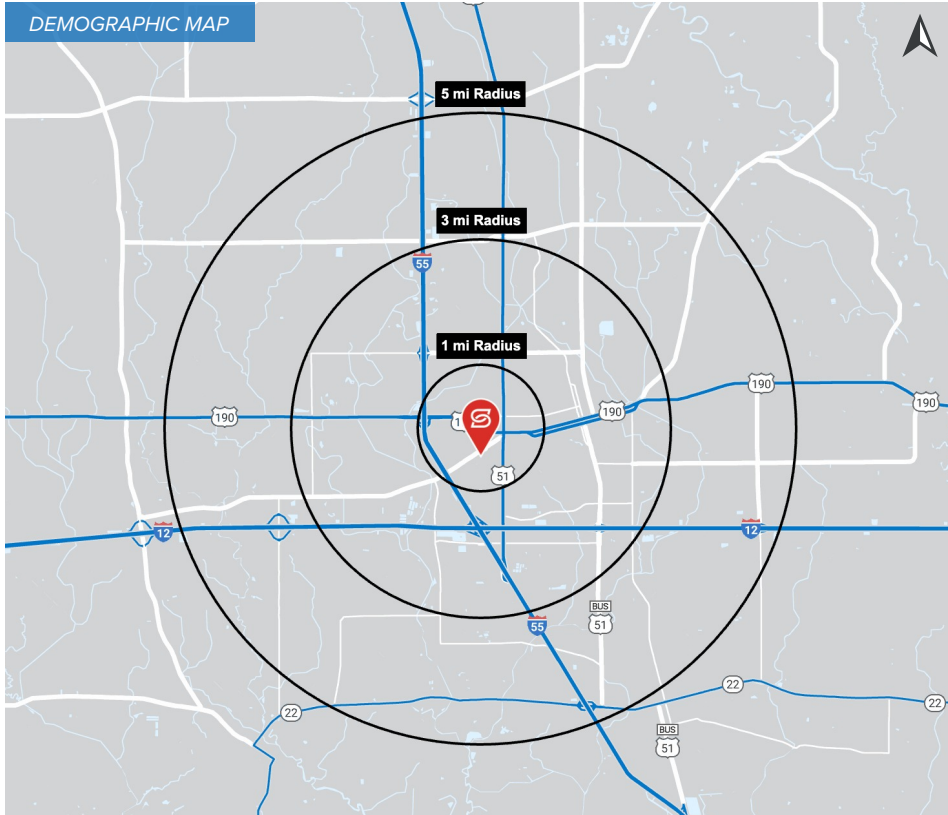
AERIAL

WEST
SITE PLAN

EAST
SITE PLAN

PHOTOS

DEMOGRAPHICS



2023 DEMOGRAPHICS

3 MILE

5 MILE

10 MILE



POPULATION

4,914

32,594

62,581

3 MILE

5 MILE

10 MILE



AVG. HH INCOME

\$64,457

\$62,150

\$72,546

3 MILE

5 MILE

10 MILE



HOUSEHOLDS

1,996

12,708

24,778