

1 PRELIMINARY FLOOR PLAN
1/4" = 1'-0"

PROJECT:
NEW OFFICE/WAREHOUSE BUILDING
LAWRENCE MINOR ROAD - TRACT III-A-1, PHASE 1
Gonzales, LA 70737

REVISIONS:

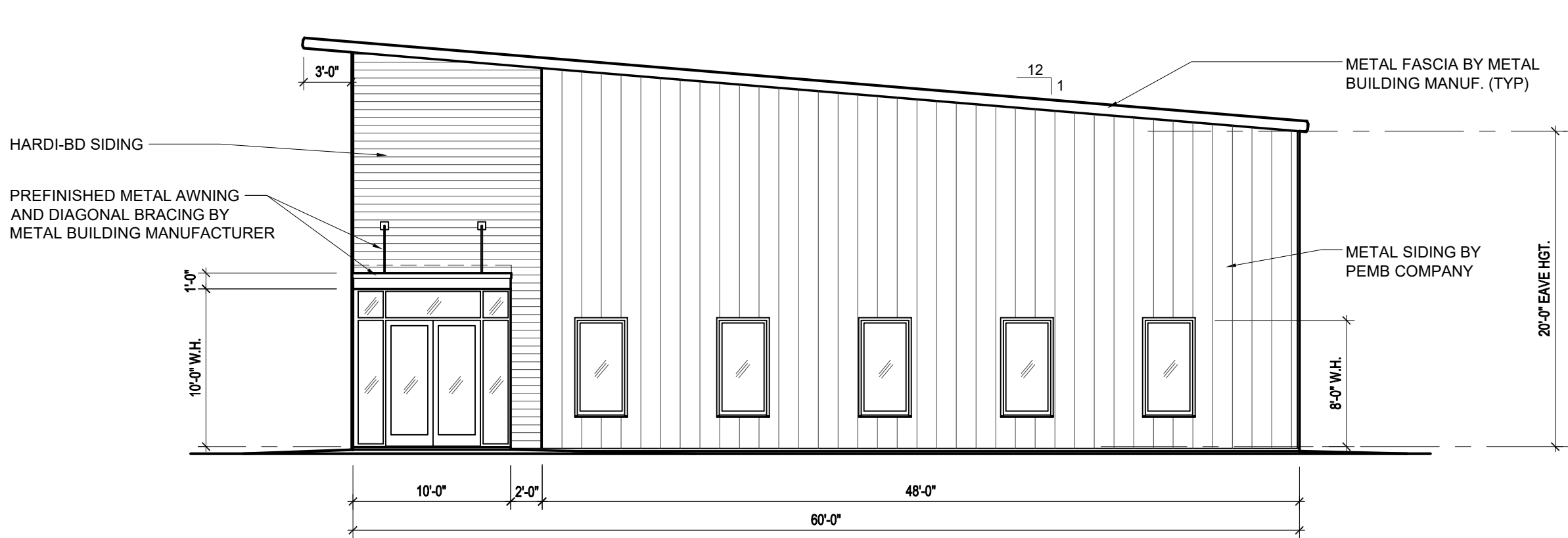
DATE:
9/17/2025

DRAWN BY:
TR

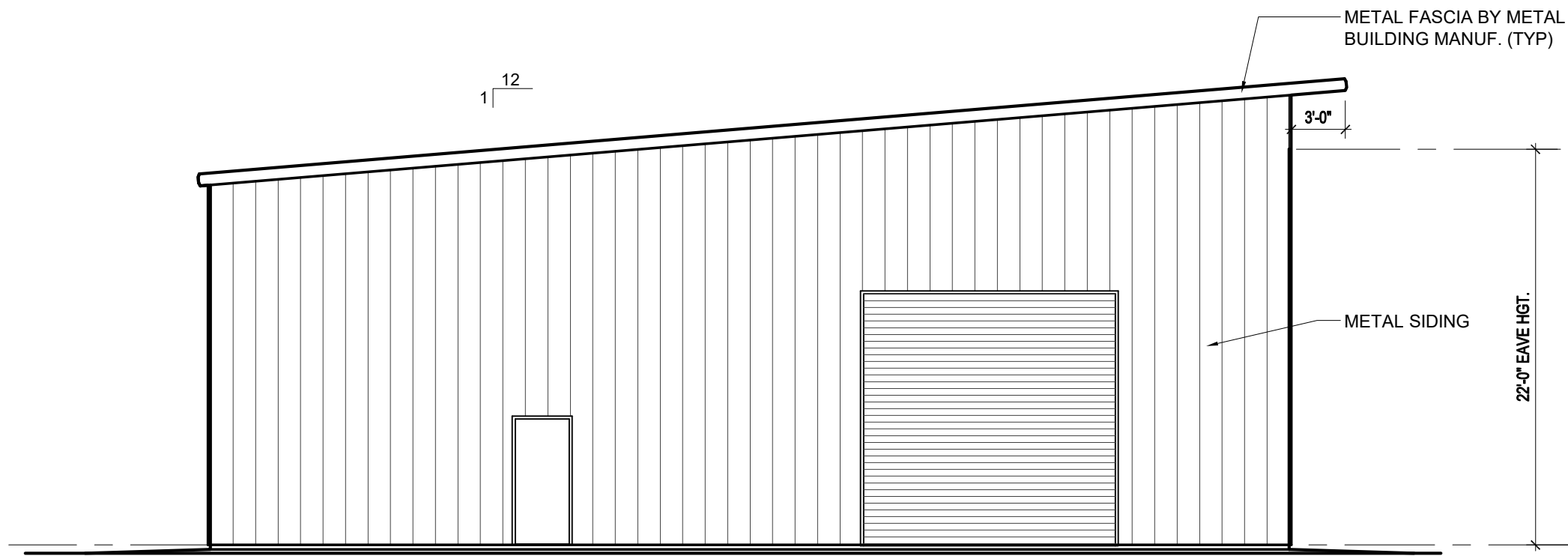
CHECKED BY:
TR

PROJECT NO:
A05.2025

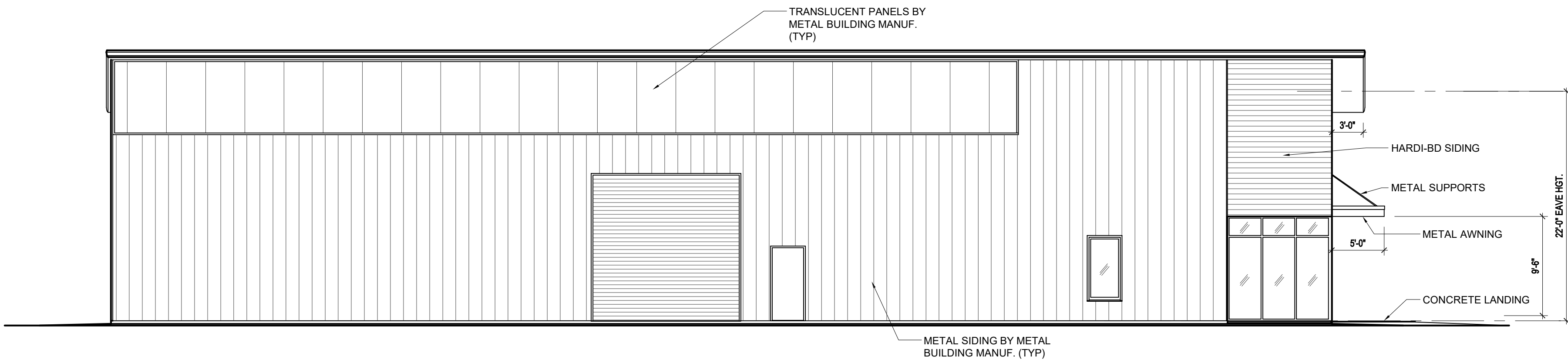
A1



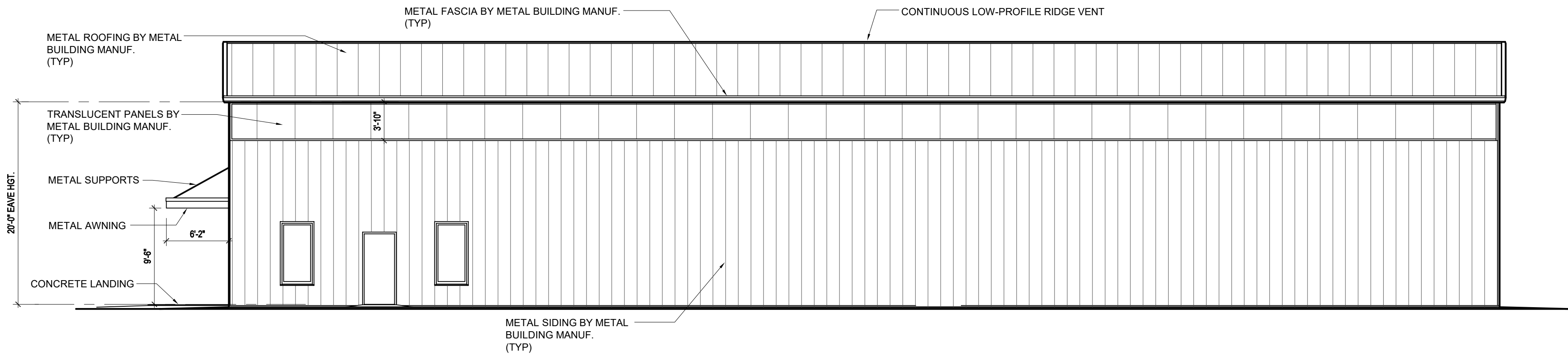
1 FRONT ELEVATION (LAWRENCE MINOR DRIVE)
1/8" = 1'-0"



2 REAR ELEVATION
1/8" = 1'-0"



3 LEFT ELEVATION
1/8" = 1'-0"



4 RIGHT ELEVATION
1/8" = 1'-0"