

NORTHPARK

NORTHPARK BUSINESS PARK

Highway 190, Covington, LA

business | retail | hotel | residential

Contact: **Barry Spizer**
(504) 620-0348
bspizer@srsa-realestate.com

SRSA COMMERCIAL
REAL ESTATE



CHEVRON GULF OF MEXICO HEADQUARTERS

350,000 sq. ft. Class A, LEED Certified Platinum



MAJOR OFFICE TENANTS IN THE PARK



Strategically located between New Orleans and Baton Rouge



NORTHPARK TO BATON ROUGE: 68 MILES (1 HR DRIVE)

NORTHPARK TO NEW ORLEANS CBD: 38 MILES (45 MIN DRIVE)

NORTHPARK TO NEW ORLEANS INTERNATIONAL AIRPORT: 39 MILES (45 MIN DRIVE)

HOTELS AT NORTHPARK
\$3,000,000 in renovation

Residence INN[®]
BY MARRIOTT

COURTYARD[®]
BY MARRIOTT



RETAIL AMENITIES



DON'S
SEAFOOD

DUNKIN'
DONUTS

FedEx

FIRST BANK
AND TRUST



Johnny's
Pizza House



McALISTER'S
DELI

NOTHING
bundt
CAKES

Ochsner
Health System

REGIONS



T-Mobile

TD Ameritrade

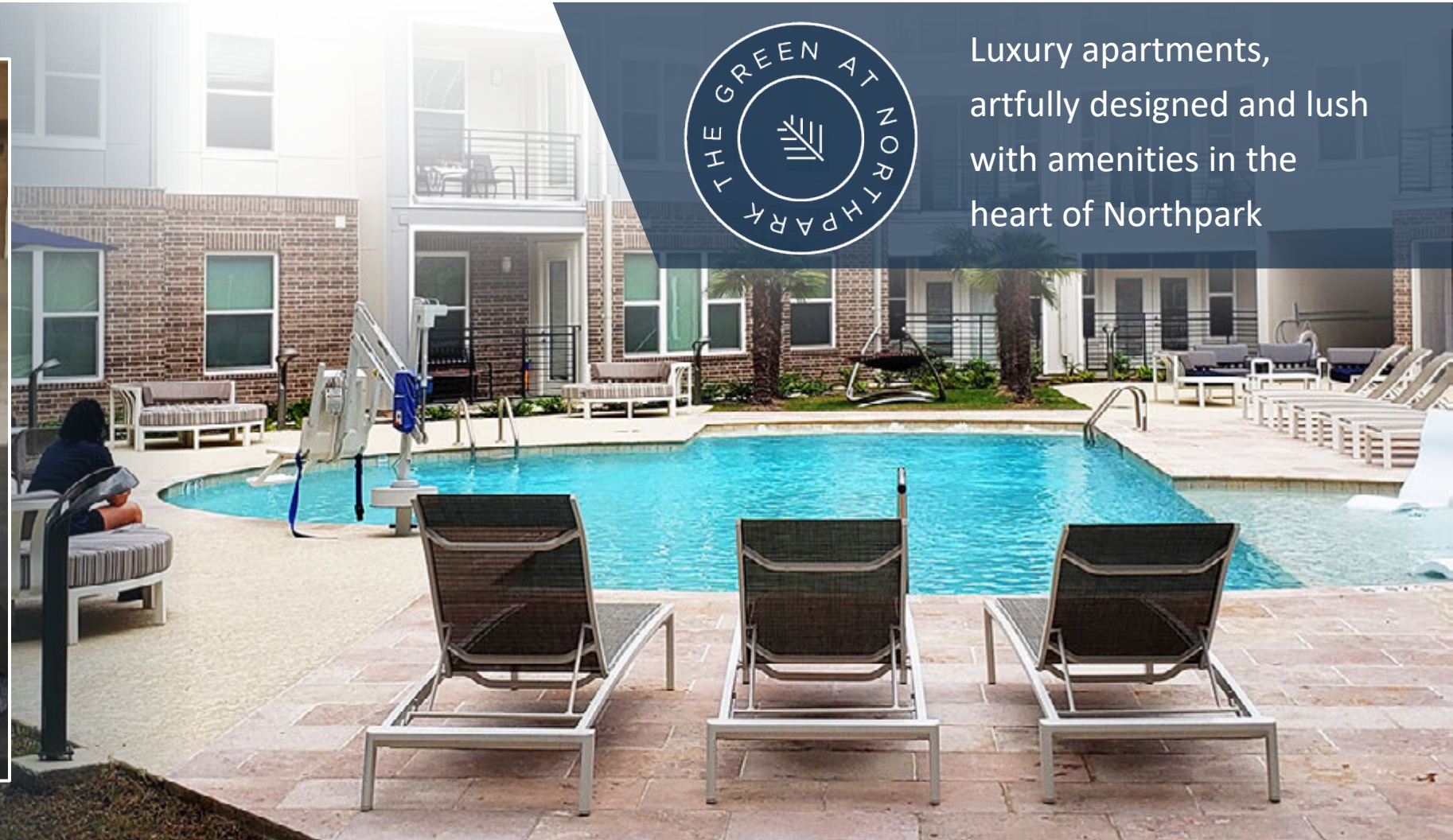
zea
roisserie & bar



RESIDENTIAL



A secure gated community featuring 297 beautiful homes, directly connected to Northpark



Luxury apartments, artfully designed and lush with amenities in the heart of Northpark

SCHOOLS

**NORTHLAKE
&
CHRISTIAN**

**Park Place
Academy**
A Division of My Little Sprout



SITE AERIAL

TUI ANE UNIVERSITY
NATIONAL PRIMATE
RESEARCH CENTER

THREE RIVERS RD

9TH AVE

FALCONER DR

TUI ANE UNIVERSITY
NATIONAL PRIMATE
RESEARCH CENTER

THE GREEN
AT WOODBRIDGE

NORTHLAKE
CHRISTIAN
SCHOOL

GREENGATE II GREENGATE I
Diversified FOOD AND SEASONING, LLC RAIN RAIN CARRON INC.

NORTHPARK
BUSINESS PARK

FedEx

Chevron

Chevron

REGIONS

EMERALD FOREST BLVD

Walmart
Supercenter

NORTHPARK BLVD

LOCO
LLC

POOLCORP

COURTYARD
Marriott

DON'S
SEAFOOD

Residence
Inn
Marriott

CANTINA

THE ESTATES
OF
NORTHPARK

US HWY 190 61,490 ADT

OUTBACK
STEAKHOUSE

ROUSES
MARKETS

THE HOME
DEPOT

Capital One

Chick-fil-A

TACO
BELLS

at&t

GULF COAST BANK
& Trust Company

LOWE'S

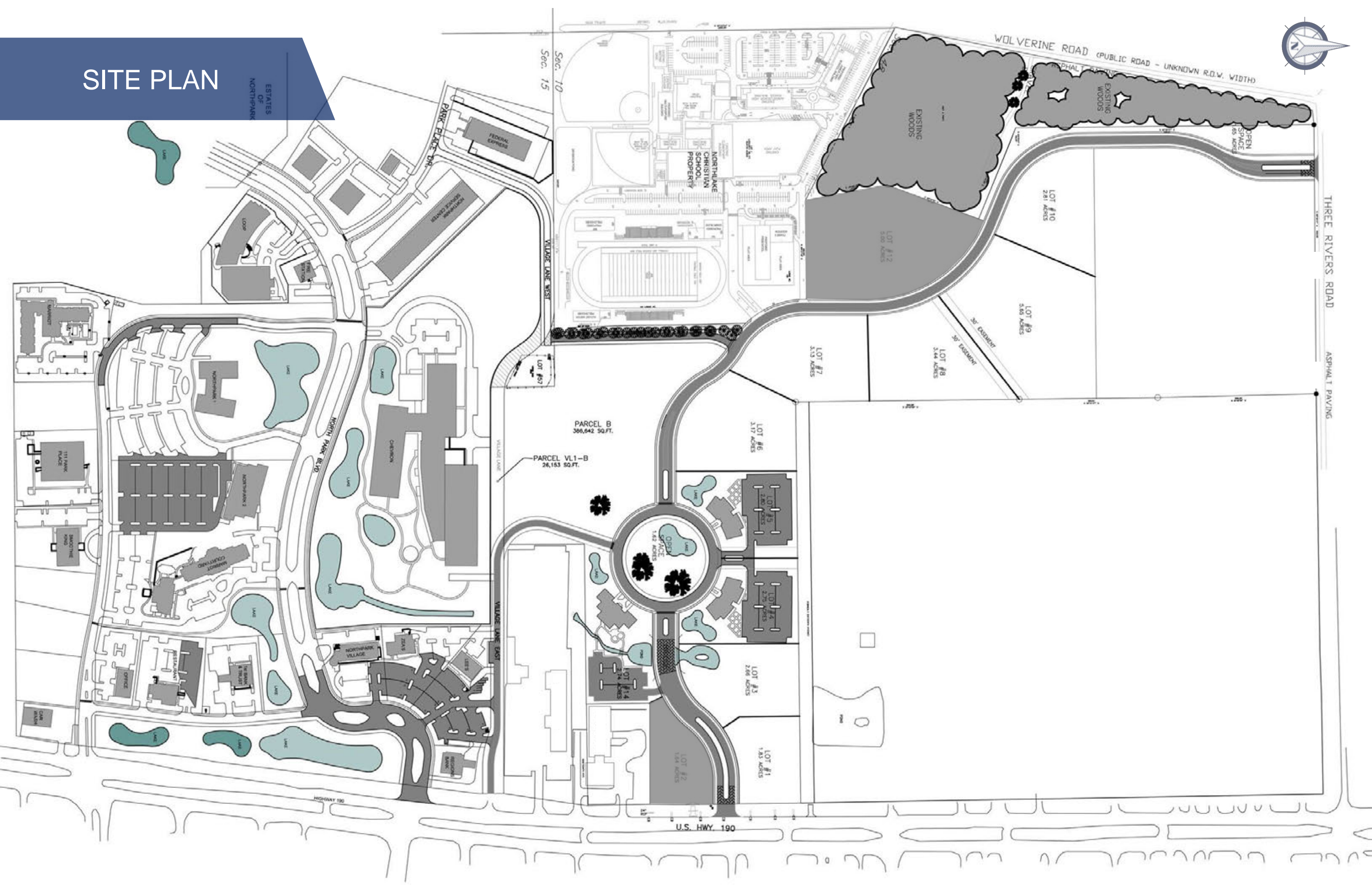
Cane's

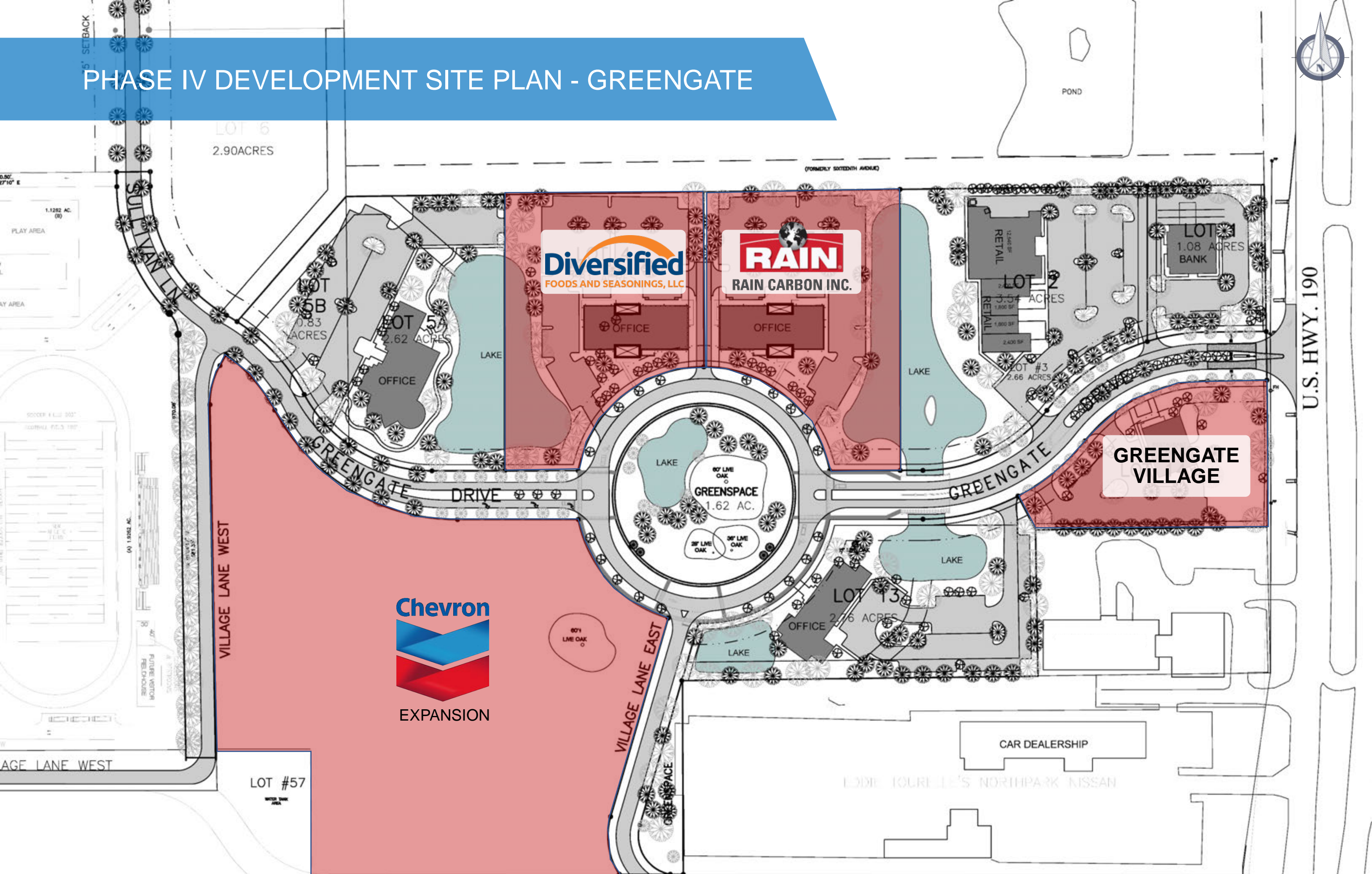
HANCOCK
WHITNEY



SITE PLAN

ESTATES
OF
NORTH PARK





NORTHPARK GREENGATE PHOTOS



NORTH PARK BUSINESS PARK

Contact: **Barry Spizer**
(504) 620-0348
bspizer@srsa-realestate.com



COMMERCIAL
REAL ESTATE