

**AVAILABLE  
FOR LEASE**

**1402 BRIDGEVIEW DR.**

**PORT ALLEN, LA 70767**

**INDUSTRIAL BUILDING**

**12,700 S.F.  
(ALL OR PART)**

**UP TO 2.4 +/- ACRES**

**stirling**



### PROPERTY OVERVIEW

- This property is located on the west side of the Mississippi River directly across from Baton Rouge, LA and fronts on Bridgeview Drive in Westport Industrial Park, West Baton Rouge Parish, City of Port Allen, LA 70767. The site benefits from outstanding I-10 visibility (79,400 +/- VPD).
- Great Location and great access!! Located between two I-10 interchanges: via I-10 (exit 151) at LA 415/Lobdell Hwy interchange and I-10 (exit 153) at LA Hwy 1/Port Allen interchange. The property is positioned on the north side of I-10 and Bridgeview Drive, adjoining west side of "Kenworth of South Louisiana".
- The site is level, appears to be well drained (in Flood Zone X), and has concrete paved parking on the south and west sides of the building with 86 parking spaces. There is also concrete paved 86' deep truck court at the rear of the building. Entire property is well-maintained and is in good condition. Suites 2 and 6 are unfinished, except for concrete floor slabs, and need buildout for user. Suite 5 is climate controlled, has room to expand, and includes one 25-ton Standard traveling bridge crane (15' clear under hook) on 48'W. X 100'L. crane-way.

### OFFERING SUMMARY

<b>Lease Rate:</b>	\$8.00 PSF - \$12.00 PSF (Range based on "As-Is" or Finished)
<b>Lease Type:</b>	NNN
<b>Available SF:</b>	12,700± S.F. (All or Part)
<b>Building Size:</b>	± 38,894 SF
<b>Lot Size:</b>	Adjacent 2.4+ Vacant Acres (If Needed)

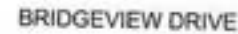






### BUILDING INFORMATION

<b>Building Size</b>	38,894 SF - Class A Steel Construction
<b>Tenancy</b>	Multiple
<b>Ceiling Height</b>	34 ft eave at Front. 22 ft eave at Rear
<b>Minimum Ceiling Height</b>	22 ft eave at Rear
<b>Number of Floors</b>	1
<b>Year Built</b>	2014
<b>Power</b>	3 Phase Available
<b>Overhead Doors</b>	Five 14'W. X 15'H. & One 12'X12', Rollup, Drive-Thru., Grade-level Doors
<b>Loading Well</b>	No (Can be added)
<b>Sprinkler</b>	Yes
<b>Drive-Thru Bays</b>	6
<b>Truck Court</b>	Concrete Paved, Rear Loading, 86' Deep
<b>Access</b>	From two interchanges on I-10, and from LA Hwy 1 (Alexander Ave) and LA 415 (Lobdell Hwy)
<b>Zoning</b>	L-3 (Heavy Industrial) For both building and vacant lot
<b>Construction:</b>	Pre-engineered steel frame on grade level concrete slab. Metal roof and exterior walls, Roll on, vinal back insulation on ceiling & perimeter walls.
<b>Outside Paving:</b>	61,000± S.F. concrete paved sidewalks, drives, and parking. Includes 86' deep truck court with parking at rear (N.) side of bldg. plus 86 parking spaces at front and W. side of bldg.
<b>Condition:</b>	Very well maintained. Almost like new.

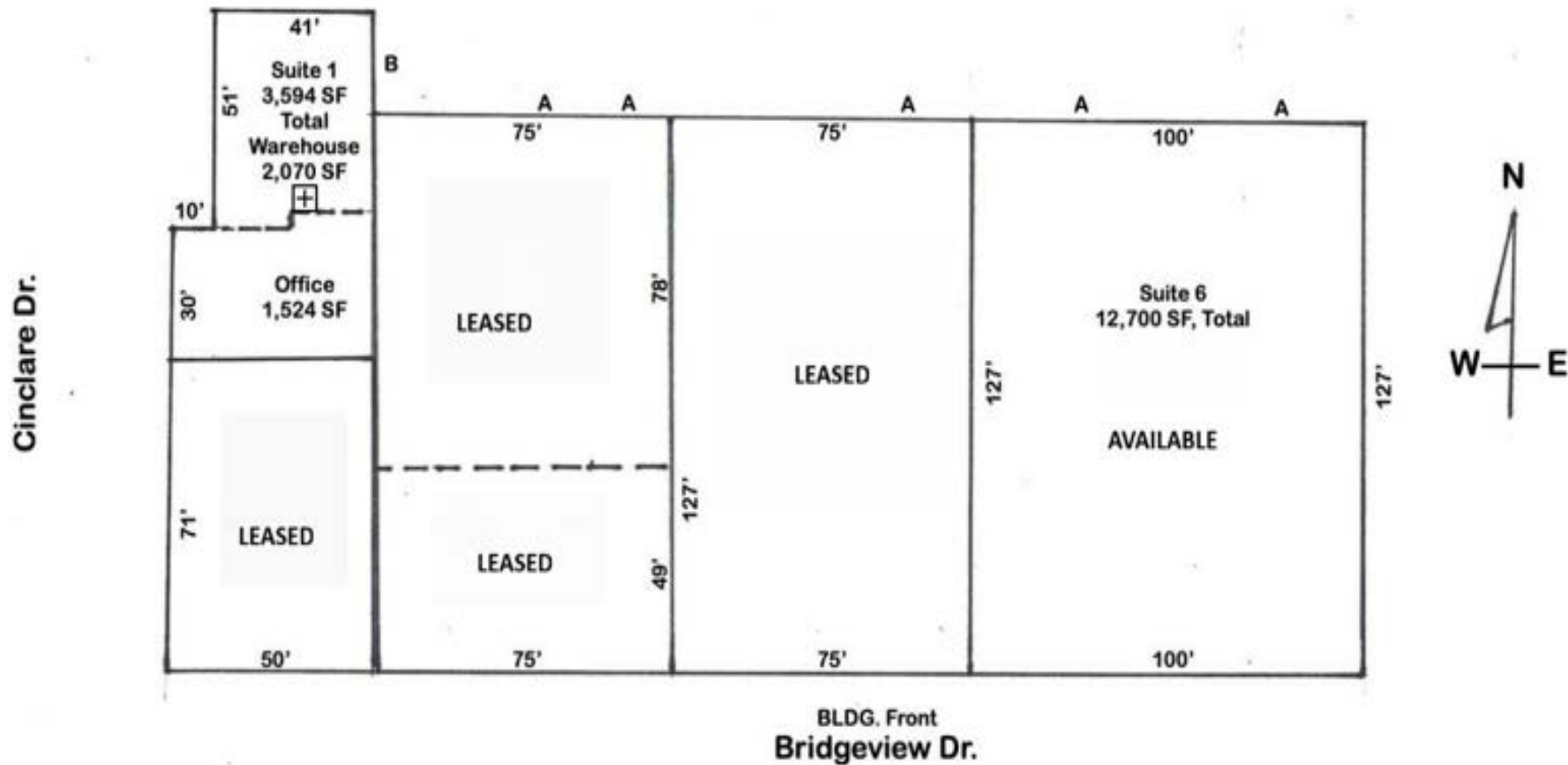


1402 Bridgeview Dr. Port Allen, LA 70767



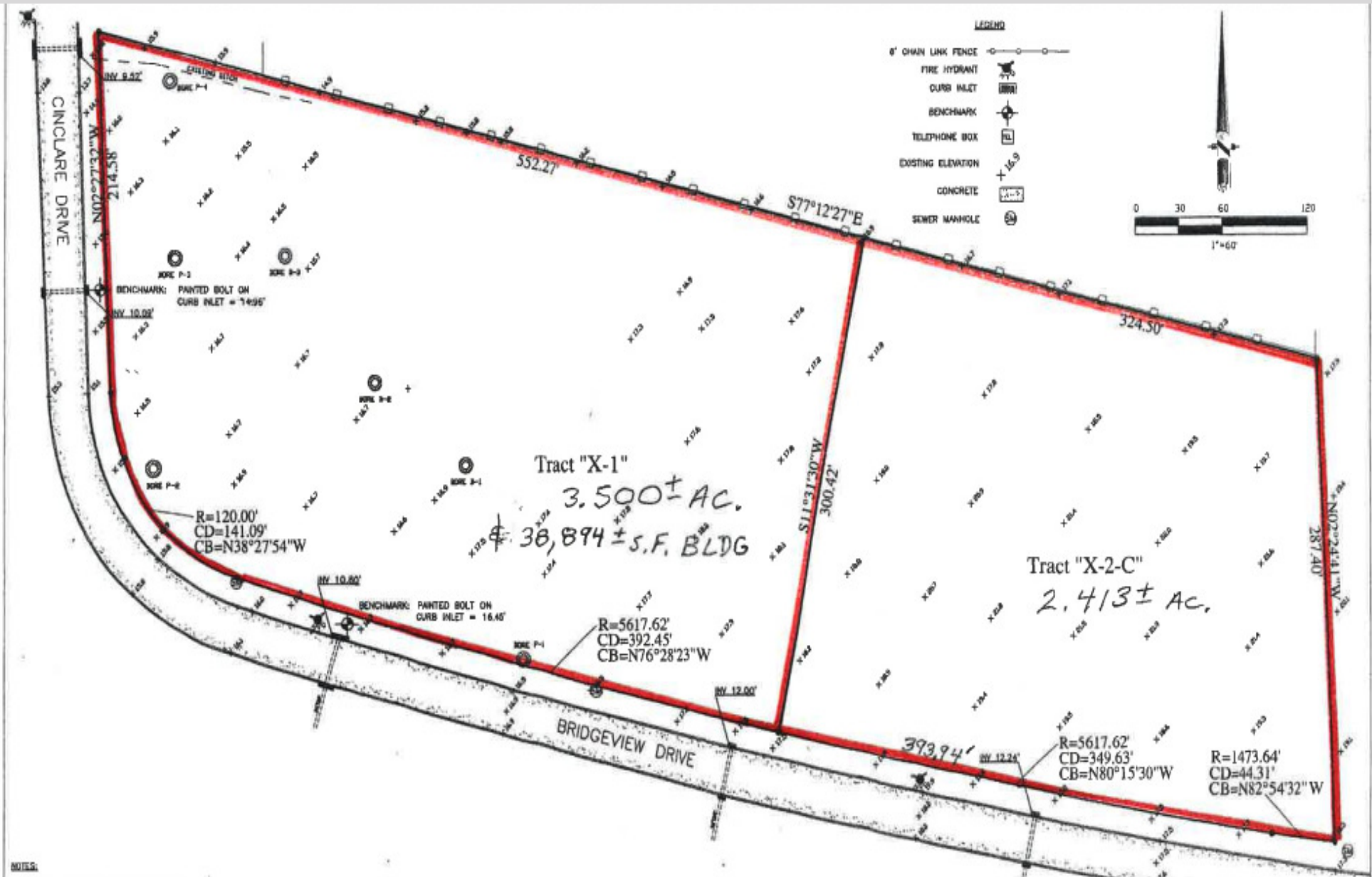
Total BLDG Area: 38,894 SF

BLDG. Floor Plan  
A= 14'W x 15'H Drive Thru O.H.D.  
B= 12'x12' Drive Thru O.H.D.



Potential availability with relocation of owner-occupied suite 1

All Sizes and Dimensions are approximate and subject to verification and change







View from East to West



View from West to East



Suite 3 & 4, Office



Suite 6, from rear to front



Suite 6, from front to rear



Suite 3 & 4, Office





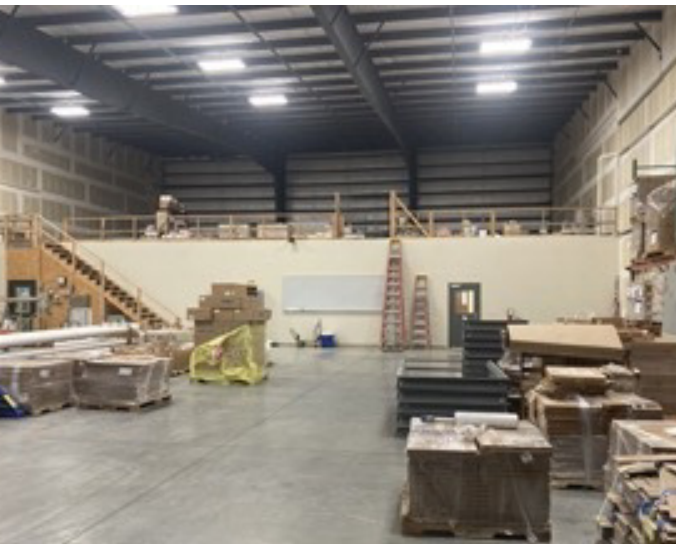
Suite 5, from front to rear



Suite 5, from rear to front, and 25 ton crane



Suite 3 & 4, Office



Suite 3 & 4, Warehouse and back wall of office area

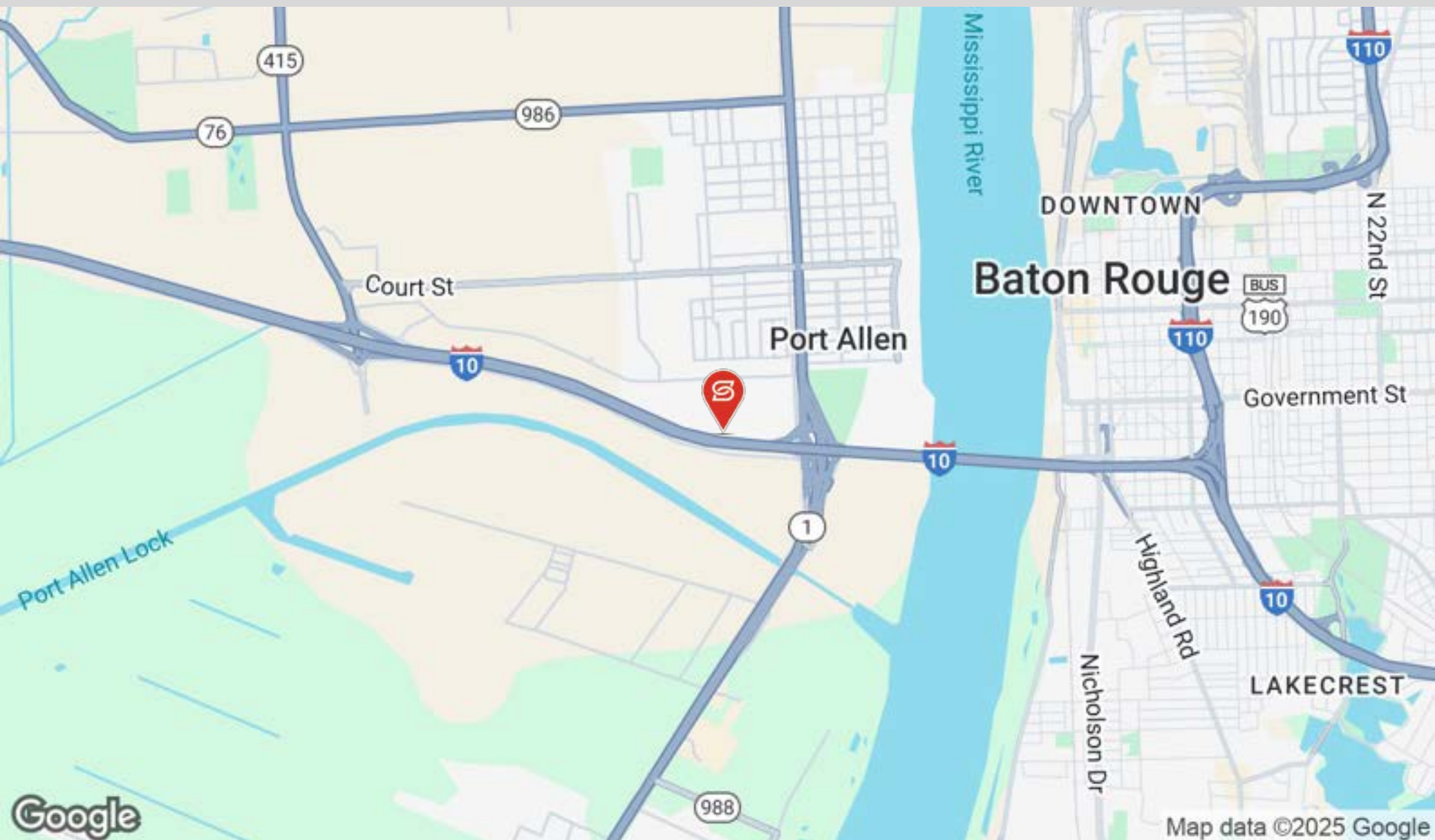


Suite 3 & 4, Warehouse



Suite 1, Office













### STEVE LEGENDRE, CCIM

slegendre@stirlingprop.com

Direct: 225.329.0295

## PROFESSIONAL BACKGROUND

Steve Legendre recently joined Stirling's Commercial Brokerage Division as Regional Vice President. With an over 22-year history in commercial real estate, he focuses on helping clients with the acquisition and/or disposition of development land, as well as investment properties across Louisiana and the Gulf South. Legendre's vast local market experience and insight have earned him a reputation as the go-to source for site selection, as he deeply understands the nuances and analysis from both the developer and end-user perspective.

Prior to joining Stirling, Legendre, along with Ben Graham, CCIM and Justin Langlois, CCIM, founded SVN | Graham, Langlois & Legendre (SVN GLL), a full-service commercial real estate brokerage firm based in Baton Rouge servicing Louisiana's Gulf Coast.

Earning a Bachelor's Degree in Business from the University of New Orleans in 1991, Legendre began his commercial real estate career in 1995. Only six years later in 2001, Legendre achieved the highly coveted commercial real estate designation of Certified Commercial Investment Member (CCIM). Over the course of his career, Legendre has held several board positions including the Greater Baton Rouge Association of Realtors (GBRAR) Trends Committee, the GBRAR Commercial Investment Division and the CCIM Louisiana Chapter. Most recently in 2015, Legendre received the SVN® Achiever Award for ranking as one of the top producing SVN Advisors in the nation.

Active in his local community, Legendre is involved at St. George Parish and School as a past President of the Athletic Association, and at the St. George Men's Club. He has also been a Volunteer Coach at Baton Rouge Soccer Club since 2005. Legendre currently resides in Baton Rouge with his wife Jodie and their three children Avery, Hallie and Luke.

#### Stirling

8550 United Plaza Boulevard Suite 101

Baton Rouge, LA 70809

225.926.4481



### JIM DOWLING, SIOR

Senior Advisor

jdowling@stirlingprop.com  
Direct: 318.347.2043

LA #BROK.44344.A-ASA

## PROFESSIONAL BACKGROUND

Jim Dowling, SIOR is a Senior Advisor / Associate Broker with Stirling Properties, specializing in brokerage, leasing and development of all land types, including commercial, industrial and investment properties located throughout Louisiana. His focus is on retail, office, warehouse and manufacturing properties, as well as urban land and farms, acreage and timberland. Jim has extensive experience in site searches, evaluations and acquisitions, land assemblage, feasibility studies, property valuations, highest and best use determinations, rezoning, land development, build-to-suit and real estate investment acquisitions.

Jim has been a licensed real estate broker since 1974. Prior to joining Stirling Properties in 2016, he served as president of J. Wesley Dowling & Associates, Inc. Realtors and Coldwell Banker Dowling Beauvais & Associates, Inc. Realtors.

Jim is a member of the Society of Industrial and Office Realtors (SIOR); past president of the LA/MS/AL/NWFL chapter of SIOR; graduate of the Louisiana Real Estate Institute (GRI); member of National Association of Realtors (NAR); member of Northwest Louisiana Association of Realtors and member of Louisiana Commercial Database (LACDB).

Jim attended Louisiana Tech University in Ruston, LA, and is a graduate of Louisiana State University in Baton Rouge, LA.

### Stirling Properties

8550 United Plaza Boulevard, Suite 101,  
Baton Rouge, LA 70809  
225.926.4481