

**BRICKS &
MORTAR**
REAL ESTATE CO.

±6250 SF FLEX SPACE
FOR LEASE | LIGHT INDUSTRIAL

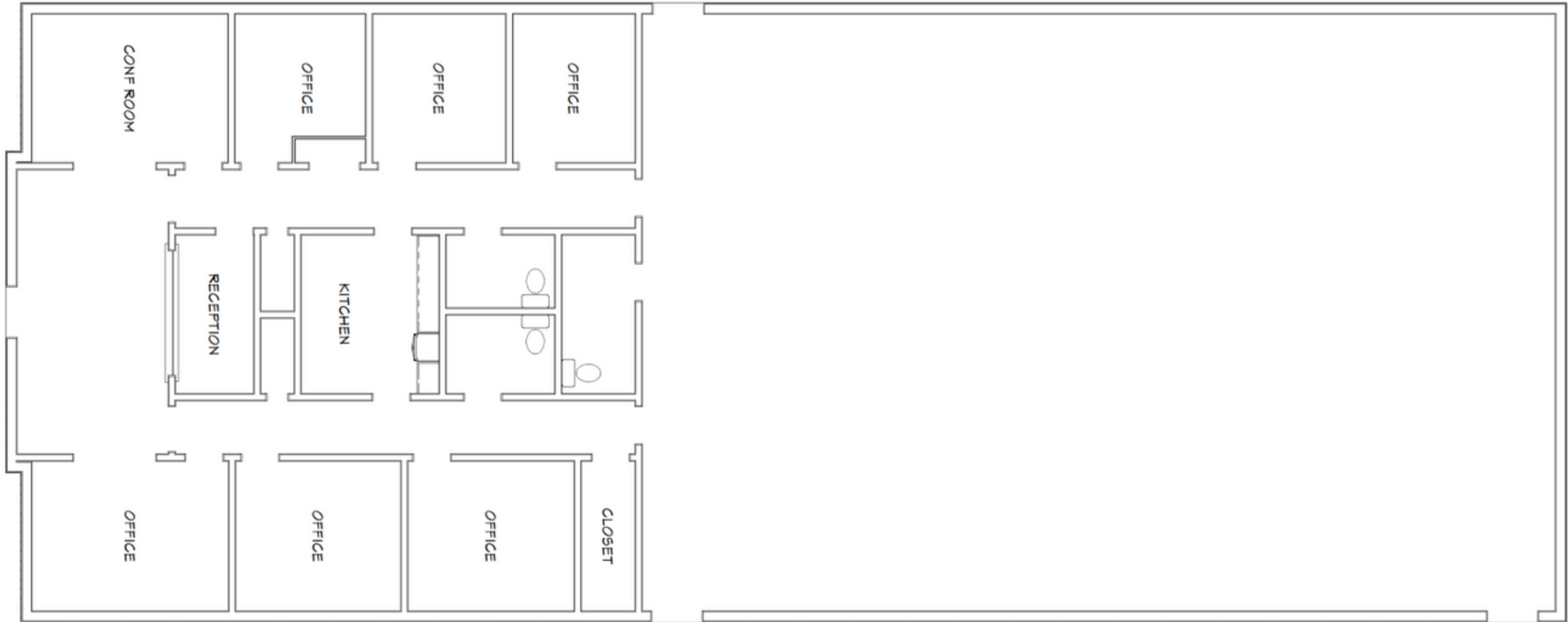


1083 COACH WILLIAMS DRIVE | SULPHUR | 70663

LISTING AGENT: BLAKE LUMPKIN, CCIM >>> 337.377.9325

± 6250 SF FLEX SPACE FOR LEASE

1083 COACH WILLIAMS DRIVE | SULPHUR | 70663



± 2500 SF OFFICE SPACE

± 3750 SF WAREHOUSE

OFFICE SPACE FEATURES:

- > 6 PRIVATE OFFICES
- > LOBBY | WAITING AREA
- > CONFERENCE ROOM
- > KITCHEN | BREAK ROOM
- > 2 RESTROOMS

± 6250 SF FLEX SPACE FOR LEASE

1083 COACH WILLIAMS DRIVE | SULPHUR | 70663



WAREHOUSE OFFERS:

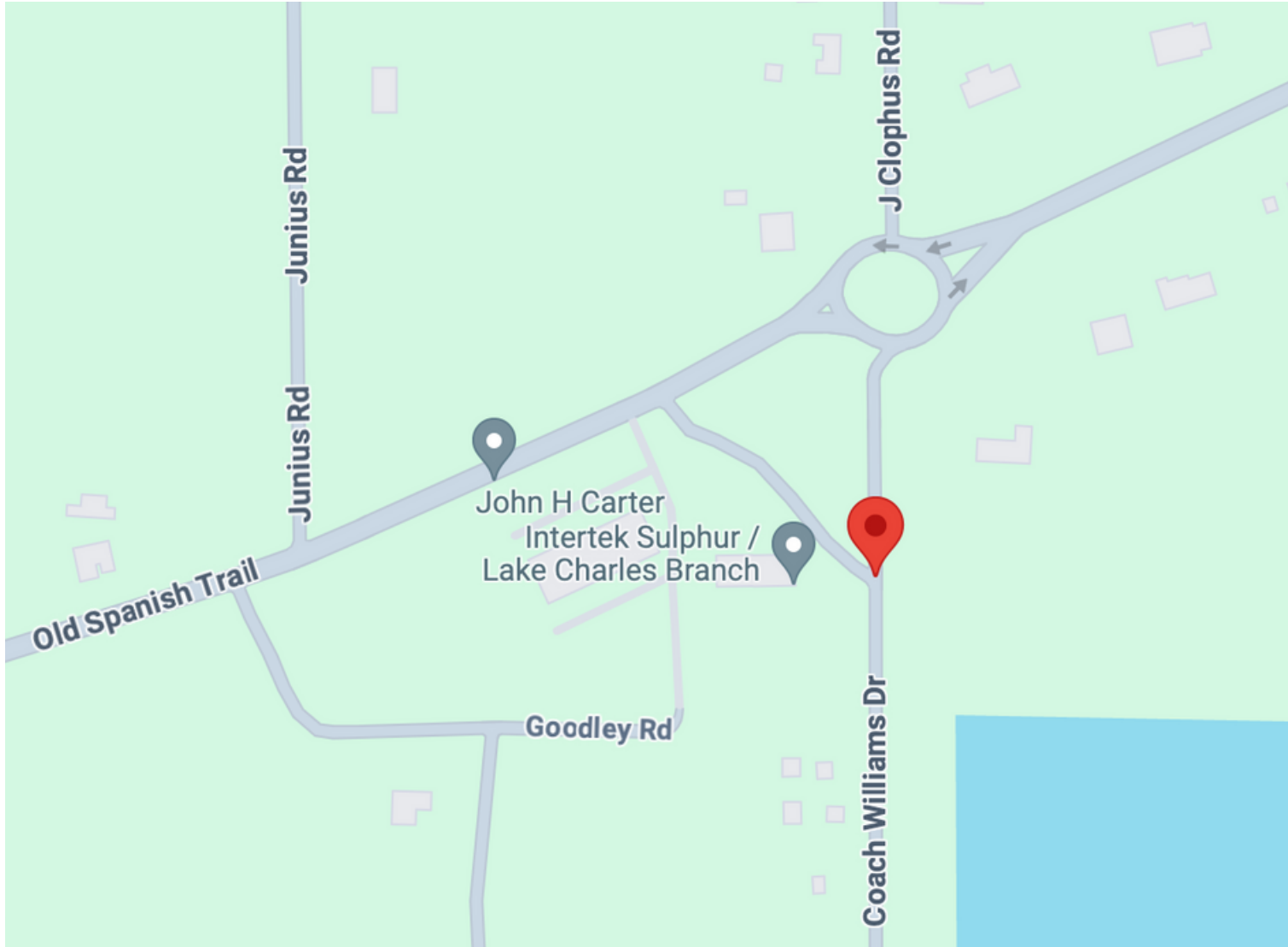
- > 16' EAVE HEIGHT
 - > 3 ROLL UP DOORS
 - > 1 RESTROOM
-

>>> NEWLY CONSTRUCTED BUILDING <<<



± 6250 SF FLEX SPACE FOR LEASE

1083 COACH WILLIAMS DRIVE | SULPHUR | 70663



ZONED LIGHT INDUSTRIAL | APPROX. 0.6 ACRES



± 6250 SF FLEX SPACE FOR LEASE

1083 COACH WILLIAMS DRIVE | SULPHUR | 70663

\$9,500 PER MTH LEASE RATE

ALL MEASUREMENTS ARE MORE/LESS & ALL
INFORMATION IS SUBJECT TO VERIFICATION

**BRICKS &
MORTAR**
REAL ESTATE CO.

KEEPING IT REAL | KEEPING IT LOCAL

BLAKE LUMPKIN, CCIM

COMMERCIAL SALES | LEASING

BLAKELUMPKIN@BAMSWLA.COM

337.377.9325

| 337.564.6345 | BAMSWLA.COM | 822 FORD ST | LAKE CHARLES | 70601 |