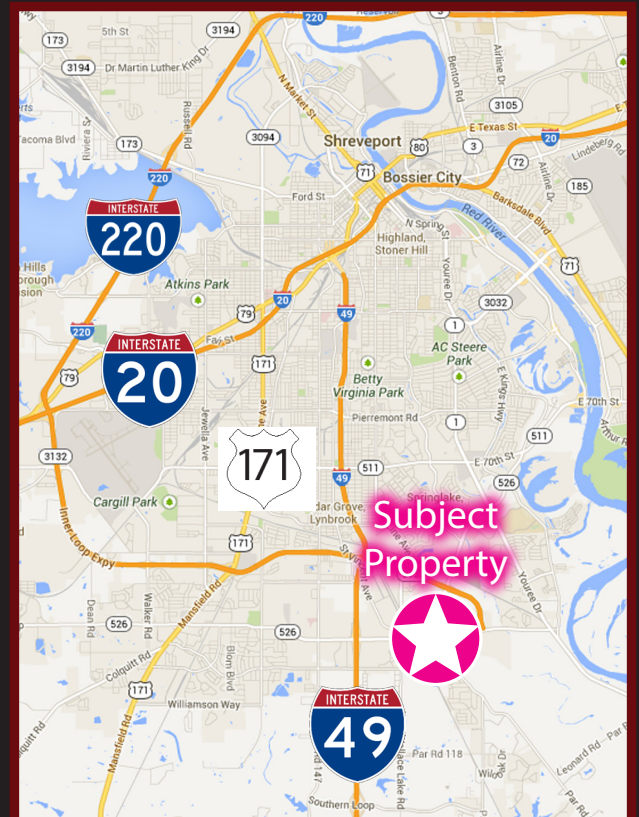


# 4 ± ACRES LAND FOR SALE

E. BERT KOUNS IND. LOOP, SHREVEPORT, LA 71106

- 4 ± Acres of land
- Located 0.5 miles south of 3132 Inner Loop, 1 Mile East of I-49, 1.25 Miles north of E. Flournoy Lucas
- Build-to-Suit option available
- Excellent traffic visibility with appx. 2,134 ft fronting E. Bert Kouns
- Zoned R-A
- Great location for multi-family or office use
- Sales Price: \$200,000



For more information, contact:

**Michael Berlin**

mberlin@vintagerealty.com | 318.222.2244 | vintagerealty.com

ALL INFORMATION CONTAINED HEREIN IS BELIEVED TO BE ACCURATE, BUT IS NOT WARRANTED AND NO LIABILITY OF ERRORS OR OMISSIONS IS ASSURED BY EITHER THE PROPERTY OWNER OR VINTAGE REALTY COMPANY OR ITS AGENTS AND EMPLOYEES. PRICES AS STATED HEREIN AND PRODUCT AVAILABILITY IS SUBJECT TO CHANGE AND/OR SALE OR LEASE WITHOUT PRIOR NOTICE, AND ALL SIZES AND DIMENSIONS ARE SUBJECT TO CORRECTION. REV 3/2025





# 4 ± ACRES FOR SALE

EAST BERT KOUNS INDUSTRIAL LOOP  
SHREVEPORT, LOUISIANA 71106



For information, please contact:

**Michael Berlin**

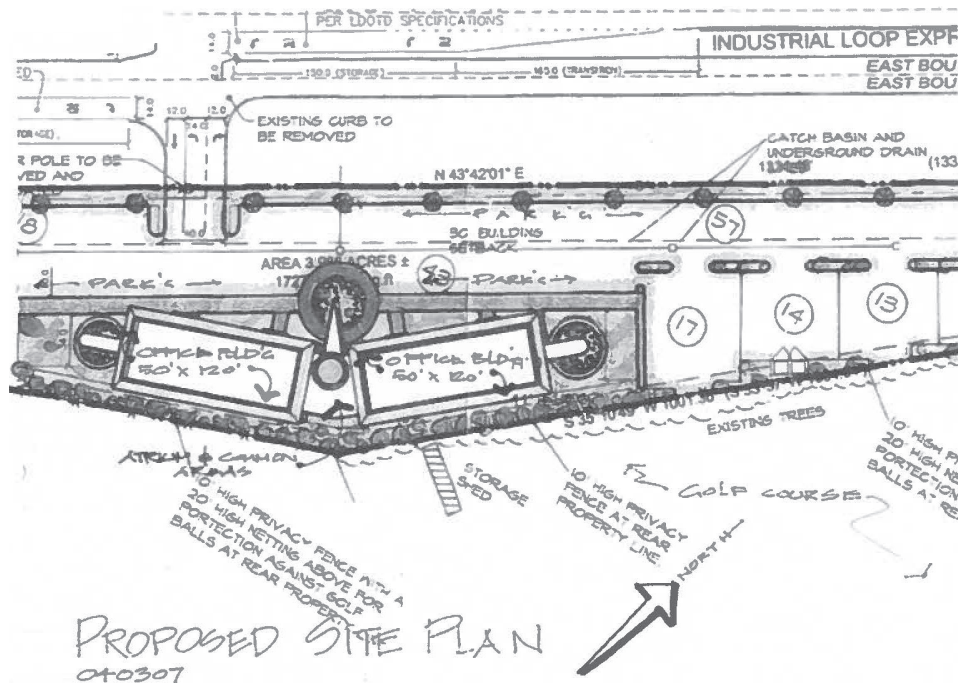
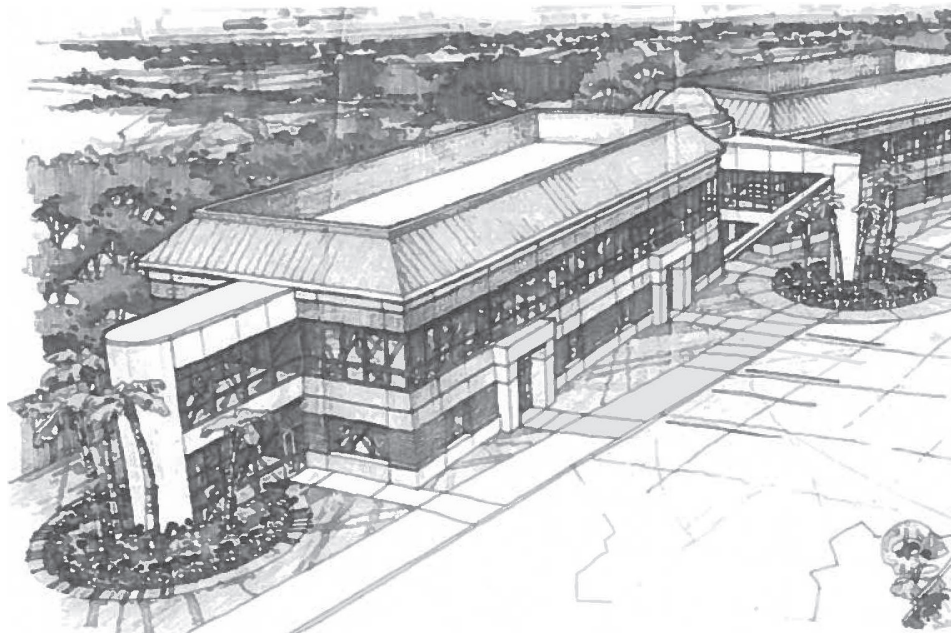
mberlin@vintagerealty.com | 318.222.2244 | vintagerealty.com

ALL INFORMATION CONTAINED HEREIN IS BELIEVED TO BE ACCURATE, BUT IS NOT WARRANTED AND NO LIABILITY OF ERRORS OR OMISSIONS IS ASSURED BY EITHER THE PROPERTY OWNER OR VINTAGE REALTY COMPANY OR ITS AGENTS AND EMPLOYEES. PRICES AS STATED HEREIN AND PRODUCT AVAILABILITY IS SUBJECT TO CHANGE AND/OR SALE OR LEASE WITHOUT PRIOR NOTICE, AND ALL SIZES AND DIMENSIONS ARE SUBJECT TO CORRECTION. 3/2025



# 4 ± ACRES FOR SALE

EAST BERT KOUNS INDUSTRIAL LOOP  
SHREVEPORT, LOUISIANA 71106



For information, please contact:

**Michael Berlin**

mberlin@vintagerealty.com | 318.222.2244 | vintagerealty.com

ALL INFORMATION CONTAINED HEREIN IS BELIEVED TO BE ACCURATE, BUT IS NOT WARRANTED AND NO LIABILITY OF ERRORS OR OMISSIONS IS ASSURED BY EITHER THE PROPERTY OWNER OR VINTAGE REALTY COMPANY OR ITS AGENTS AND EMPLOYEES. PRICES AS STATED HEREIN AND PRODUCT AVAILABILITY IS SUBJECT TO CHANGE AND/OR SALE OR LEASE WITHOUT PRIOR NOTICE, AND ALL SIZES AND DIMENSIONS ARE SUBJECT TO CORRECTION. 3/2025