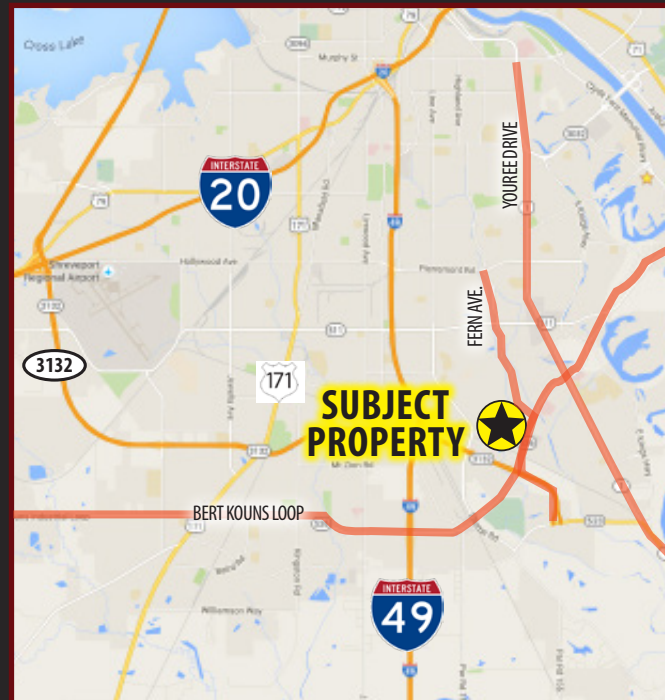




OFFICE CONDO FOR SALE

7607 FERN AVE., SUITE 701, SHREVEPORT, LA 71105

- Suite 701
- 1,195 square feet
- Built in 2009
- Reception Area, Kitchen, 4 Offices and 1 Restroom
- Located in Fern Avenue Office Park , an area of professional and medical office properties



For more information, contact:

Andy Querbes | 318.222.2244
aquerbes@vintagerealty.com

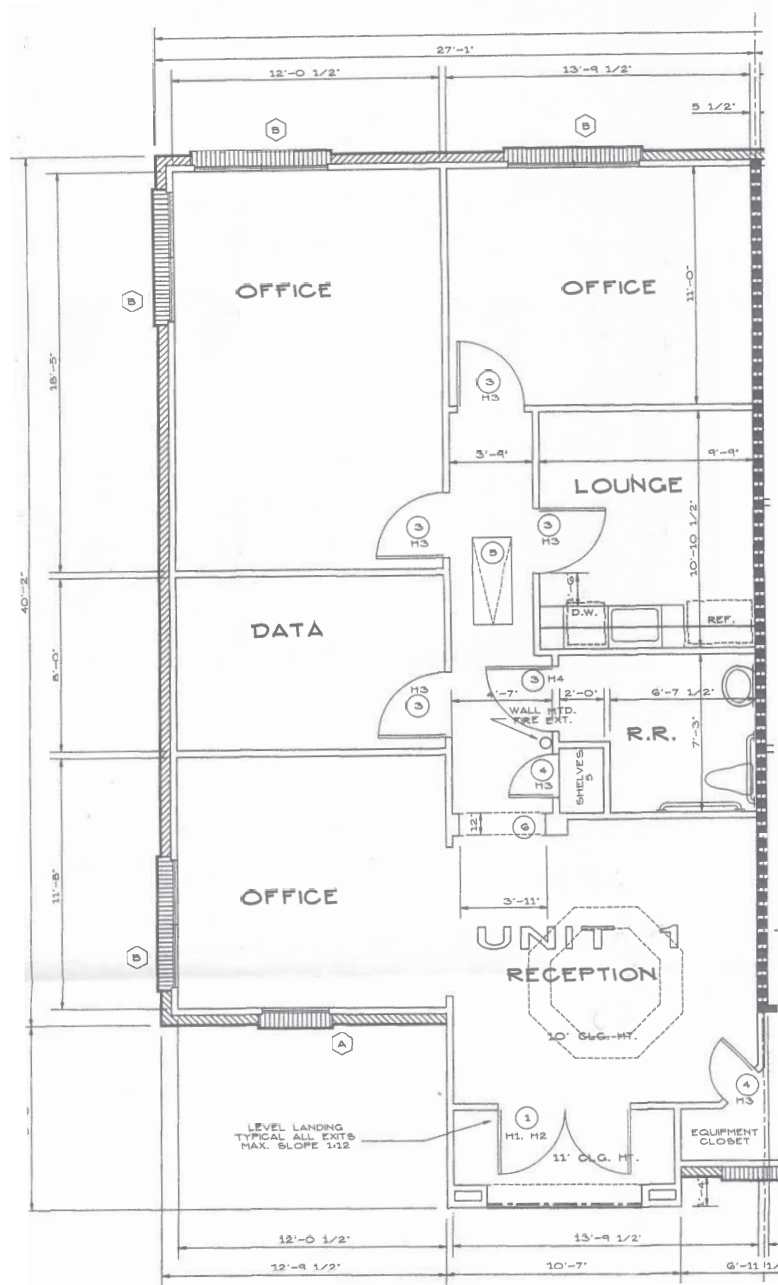
All information contained herein is believed to be accurate, but is not warranted and no liability of errors or omissions is assured by either the property owner or Vintage Realty Company or its agents and employees. Prices as stated herein and product availability is subject to change and/or sale or lease without prior notice, and all sizes and dimensions are subject to correction. Rev 5/2025



OFFICE CONDO FOR SALE

7607 FERN AVENUE, SUITE 701
SHREVEPORT, LOUISIANA 71105

SUITE 701
1,195 SQUARE FEET



For more information, contact:

Andy Querbes | 318.222.2244
aquerbes@vintagerealty.com

ALL INFORMATION CONTAINED HEREIN IS BELIEVED TO BE ACCURATE, BUT IS NOT WARRANTED AND NO LIABILITY OF ERRORS OR OMISSIONS IS ASSURED BY EITHER THE PROPERTY OWNER OR VINTAGE REALTY COMPANY OR ITS AGENTS AND EMPLOYEES. PRICES AS STATED HEREIN AND PRODUCT AVAILABILITY IS SUBJECT TO CHANGE AND/OR SALE OR LEASE WITHOUT PRIOR NOTICE, AND ALL SIZES AND DIMENSIONS ARE SUBJECT TO CORRECTION. 5/2025

OFFICE CONDO FOR SALE

7607 FERN AVENUE, SUITE 701
SHREVEPORT, LOUISIANA 71105



For more information, contact:

Andy Querbes | 318.222.2244
aquerbes@vintagerealty.com

ALL INFORMATION CONTAINED HEREIN IS BELIEVED TO BE ACCURATE, BUT IS NOT WARRANTED AND NO LIABILITY OF ERRORS OR OMISSIONS IS ASSURED BY EITHER THE PROPERTY OWNER OR VINTAGE REALTY COMPANY OR ITS AGENTS AND EMPLOYEES. PRICES AS STATED HEREIN AND PRODUCT AVAILABILITY IS SUBJECT TO CHANGE AND/OR SALE OR LEASE WITHOUT PRIOR NOTICE, AND ALL SIZES AND DIMENSIONS ARE SUBJECT TO CORRECTION. 5/2025